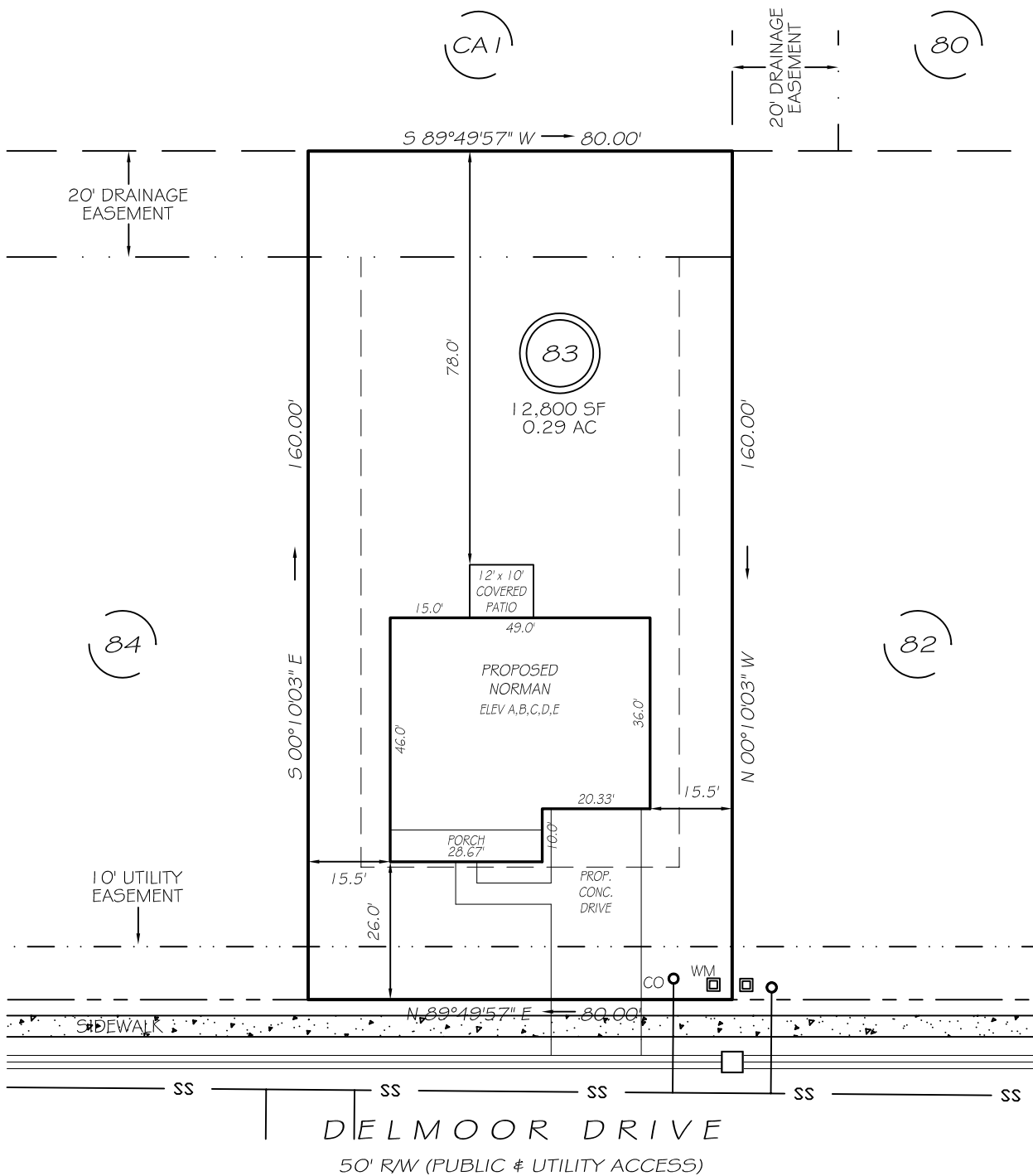


I, MICHAEL P. GRIFFIN, certify that under my direction and supervision this map was drawn from an actual field survey; that the error of closure of the survey as calculated by coordinates is 1: 10,000+; that the area shown hereon was calculated by coordinates. Dashed lines shown hereon were not surveyed.

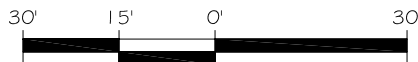
Witness my hand and seal this day of MONTH 2025.

BK 2025 PG.232
WAKE CO. REGISTRY



IMPERVIOUS AREAS

HOUSE	2051 SQ. FT.
DRIVE & WALKS	700 SQ. FT.
COVERED PATIO	120 SQ. FT.
TOTAL	2871 SQ. FT.
ALLOWED	5000 SQ. FT.



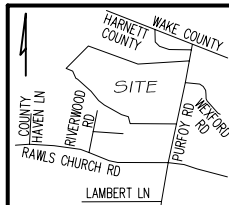
GRAPHIC SCALE
1"=30'

SETBACKS

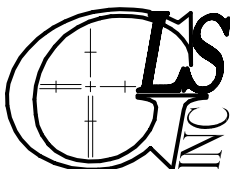
FRONT	25'
REAR	20'
SIDE	10'
CORNER SIDE	20'

LEGEND

EIP	EXISTING IRON PIPE	FES	FLARED END SECTION
ISS	IRON STAKE SET	WM	WATER METER
R/W	RIGHT OF WAY	CO	CLEAN OUT
N/F	NOW OR FORMERLY	FH	FIRE HYDRANT
EIS	EXISTING IRON STAKE	CB	CATCH BASIN



P R E L I M I N A R Y
NOT FOR RECORDATION,
SALES OR CONVEYANCE



GRIFFIN LAND SURVEYING, INC.

P. O. BOX 148
FUQUAY-VARINA, NC 27526
(919) - 567 - 1963

FIRM LIC.# C-1345

PLOT PLAN
FOR

D.R. HORTON

EAGLE CREEK SUBDIVISION

LOT 83

DELMOOR DRIVE

FUQUAY-VARINA, N.C.

HARNETT COUNTY HECTORS TOWNSHIP

DRAWN BY **KDF**

DATE **4/24/25**

CHECKED BY **MPG**

SCALE **1" = 30'**