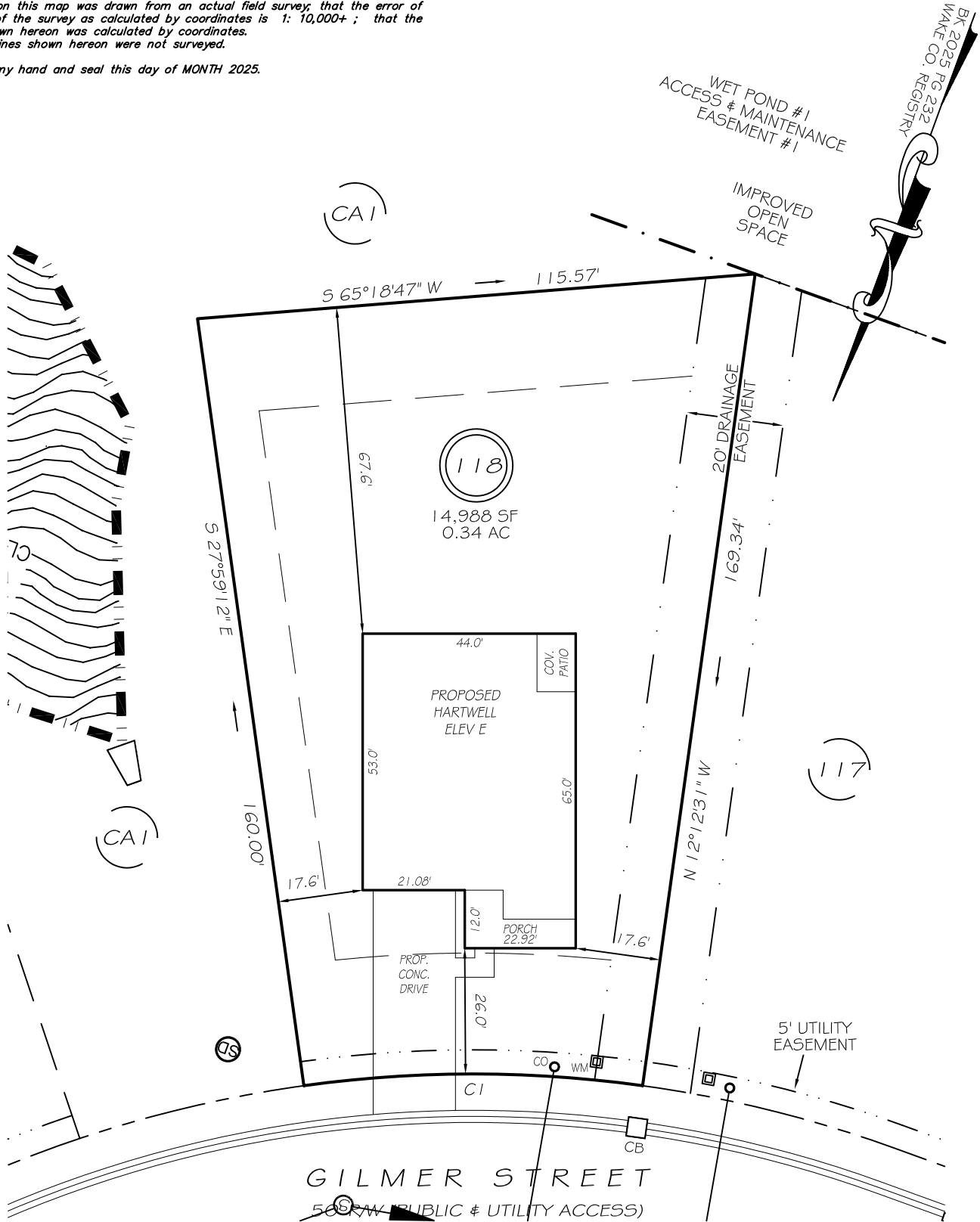


I, MICHAEL P. GRIFFIN, certify that under my direction and supervision this map was drawn from an actual field survey; that the error of closure of the survey as calculated by coordinates is 1: 10,000+; that the area shown hereon was calculated by coordinates. Dashed lines shown hereon were not surveyed.

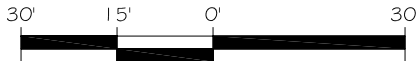
Witness my hand and seal this day of MONTH 2025.



IMPERVIOUS AREAS

HOUSE	2511 SQ. FT.
DRIVE & WALKS	692 SQ. FT.
COVERED PATIO	96 SQ. FT.
TOTAL	3299 SQ. FT.
ALLOWED	5000 SQ. FT.

CI R=255.00' L=70.22' N69°54'09"E 70.00'



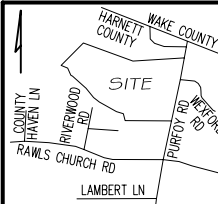
GRAPHIC SCALE
1"=30'

SETBACKS

FRONT	25'
REAR	20'
SIDE	10'
CORNER SIDE	20'

LEGEND

EIP	EXISTING IRON PIPE	FES	FLARED END SECTION
ISS	IRON STAKE SET	WM	WATER METER
R/W	RIGHT OF WAY	CO	CLEAN OUT
N/F	NOW OR FORMERLY	FH	FIRE HYDRANT
EIS	EXISTING IRON STAKE	CB	CATCH BASIN



GRIFFIN LAND SURVEYING, INC.

P. O. BOX 148
FUQUAY-VARINA, NC 27526
(919) - 567 - 1963

FIRM LIC.# C-1345

PLOT PLAN
FOR

D.R. HORTON

EAGLE CREEK SUBDIVISION

LOT 118

GILMER STREET

FUQUAY-VARINA, N.C.

HARNETT COUNTY HECTORS TOWNSHIP

DRAWN BY KDF

DATE 4/17/25

CHECKED BY MPG

SCALE 1" = 30'