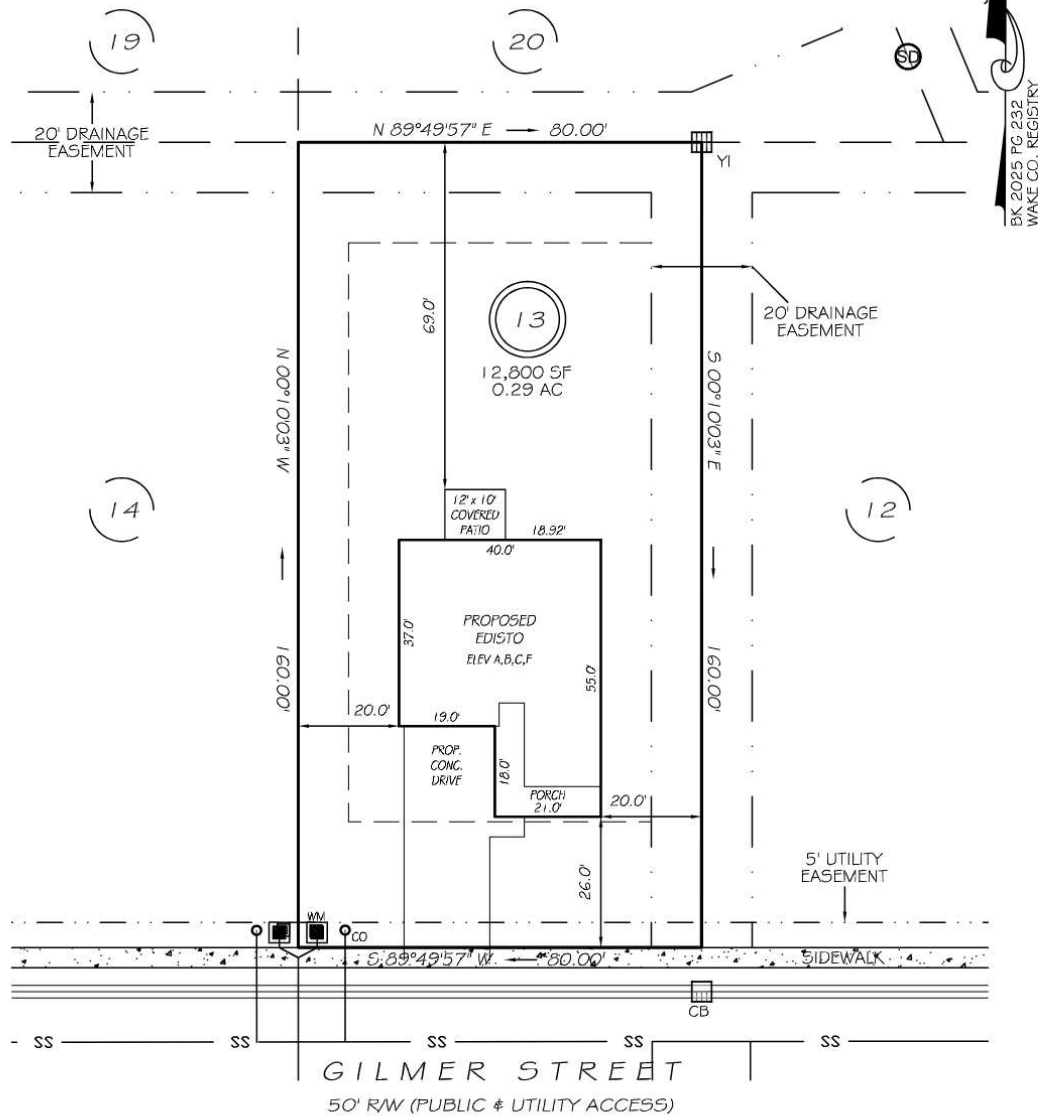


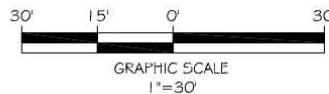
I, MICHAEL P. GRIFFIN, certify that under my direction and supervision this map was drawn from an actual field survey; that the error of closure of the survey as calculated by coordinates is 1:10,000+; that the area shown hereon was calculated by coordinates. Dashed lines shown hereon were not surveyed.

Witness my hand and seal this day of MONTH 2025.



BK 2025 PG 232
WAKE CO. REGISTRY

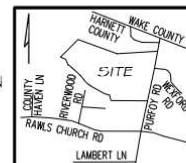
IMPERVIOUS AREAS	
HOUSE	1858 SQ. FT.
DRIVE & WALKS	793 SQ. FT.
COVERED PATIO	120 SQ. FT.
TOTAL	2771 SQ. FT.
ALLOWED	5000 SQ. FT.



SETBACKS	
FRONT	25'
REAR	20'
SIDE	10'
CORNER SIDE	20'

PRELIMINARY
NOT FOR RECORDATION,
SALES OR CONVEYANCE

FIP	EXISTING IRON PIPE	FES	FLARED END SECTION
ISS	IRON STAKE SET	WM	WATER METER
RAW	RIGHT OF WAY	CO	CLEAN OUT
N/F	NOW OR FORMERLY	FH	FIRE HYDRANT
FIS	EXISTING IRON STAKE	CB	CATCH BASIN



GRIFFIN LAND SURVEYING, INC.

P.O. BOX 148
FUQUAY-VARINA, NC 27526
(919) 567-1963

FIRM LIC.# C-1345

DRAWN BY **KDF**

DATE **4/17/25**

CHECKED BY **MPG**

SCALE **1" = 30'**

PLOT PLAN
FOR

D.R. HORTON

EAGLE CREEK SUBDIVISION

LOT 13

GILMER STREET

FUQUAY-VARINA, N.C.

HARNETT COUNTY HECTORS TOWNSHIP