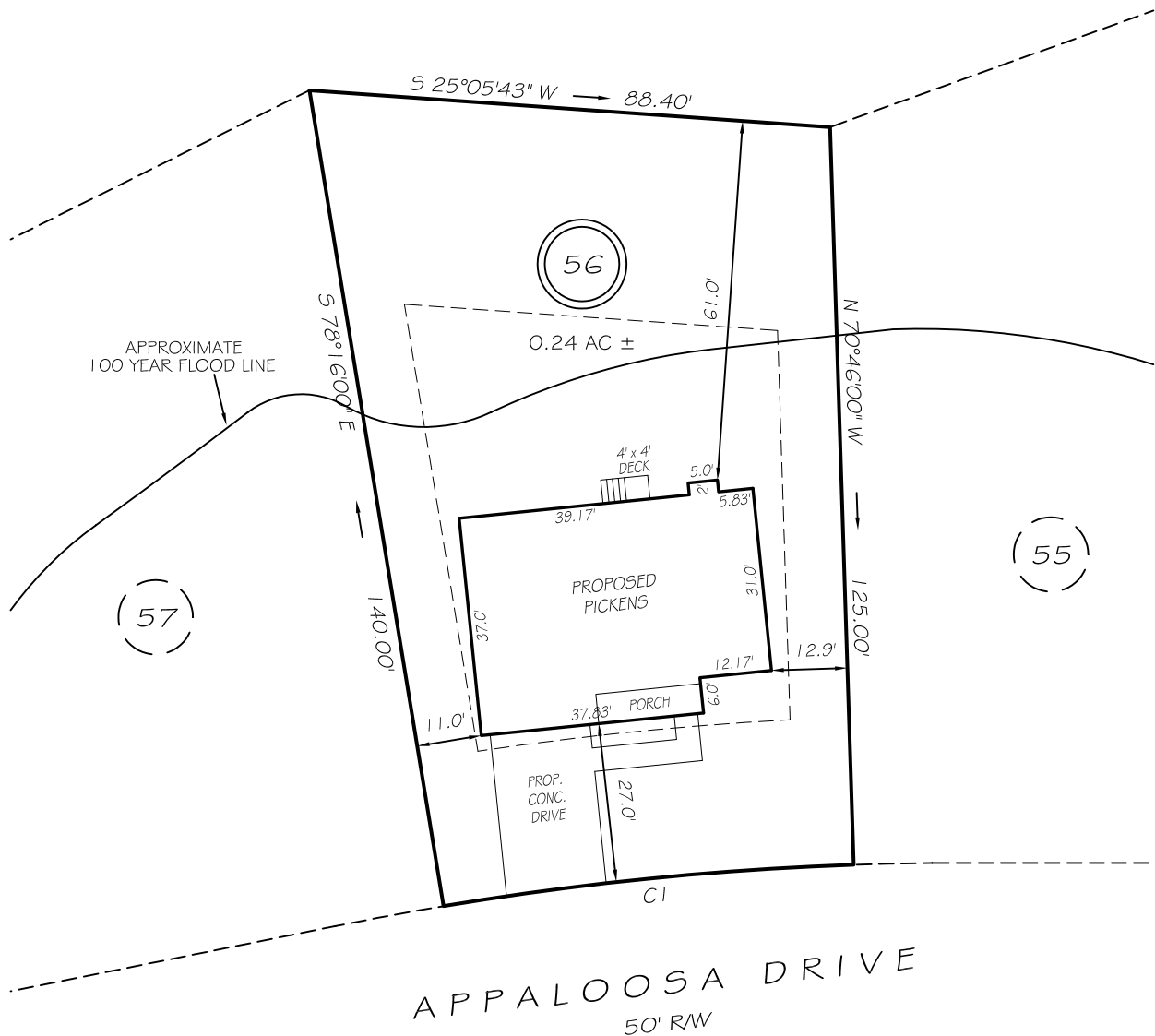


I, MICHAEL P. GRIFFIN, certify that under my direction and supervision this map was drawn from an actual field survey; that the error of closure of the survey as calculated by coordinates is 1: 10,000+; that the area shown hereon was calculated by coordinates. Dashed lines shown hereon were not surveyed.

Witness my hand and seal this day of MONTH 2025.

N/F
TART REALTY & INS INC
DB 1030 PG 119
PIN 0513-98-0724



SETBACKS

FRONT	25'
REAR	35'
SIDE	10'
CORNER SIDE	20'

REVISION: ROTATE HOUSE 3/13/25
REVISION: ADD HOUSE 3/12/25
C1 R=533.85' L=69.88' N15°18'49"E 69.83'

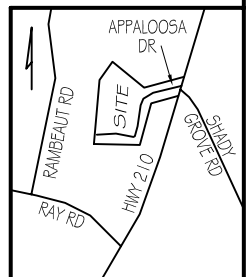


GRAPHIC SCALE
1"=30'

LEGEND

P R E L I M I N A R Y
NOT FOR RECORDATION,
SALES OR CONVEYANCE

EIP	EXISTING IRON PIPE	FES	FLARED END SECTION
ISS	IRON STAKE SET	WM	WATER METER
R/W	RIGHT OF WAY	CO	CLEAN OUT
N/F	NOW OR FORMERLY	FH	FIRE HYDRANT
EIS	EXISTING IRON STAKE	CB	CATCH BASIN



GRIFFIN LAND SURVEYING, INC.

P. O. BOX 148
FUQUAY-VARINA, NC 27526
(919) - 567 - 1963

FIRM LIC.# C-1345

PLOT PLAN
FOR

A & G RESIDENTIAL

HARNETT LAKES

LOT 56

203 APPALOOSA DRIVE

SPRING LAKE, N.C.

HARNETT COUNTY ANDERSON CREEK

DRAWN BY **KDF**

DATE **1/14/25**

CHECKED BY **MPG**

SCALE **1" = 30'**