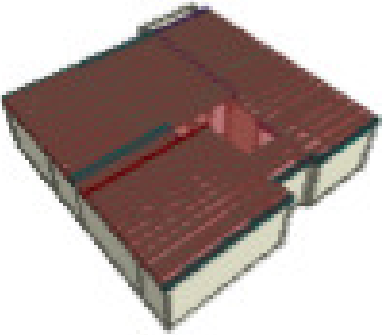


Builders First Source
23 Red Cedar Way
Apex, NC 27523
Phone: (919) 363-4956
Fax: (919) 387-8565
<https://www.bldr.com>

General Notes:
- Per ANSI/TPI 1-2002 all " Truss to Wall" connections are the responsibility of the Building Designer, not the Truss Manufacturer.
- Dimensions are Feet-Inches- Sixteenths.
- Trusses are to be 24" o.c. unless noted otherwise (U.N.O.)
- Trusses are not designed to support brick U.N.O.
- Do not cut or modify trusses without first contacting Builders FirstSource.
- Immediately contact Builders FirstSource if trusses are damaged.
Connection Notes:
- All hangers are to be Simpson or equivalent U.N.O.
- Use Manufacturer's specifications for all hanger connections U.N.O.
- Use 10d x 1 1/2" Nails in hanger connections to single ply roof girder trusses.
Floor notes:
- Shift truss as required to avoid plumbing traps.
- Installation Contractor and/or Field Supervisor are to verify all dimensions, trap locations, and options prior to installation
Dimension Notes:
- Drawing not to scale. Do not scale dimensions

△◁▷ LEFT END OF TRUSS AS SHOWN ON TRUSS
DETAIL DRAWINGS ARE INDICATED BY TRIANGLE ICONS.



<u>HANGER LIST</u>		ALL TIE DOWNS H2.5A UNLESS NOTED	
1	THA218-2	TJ 18	<u>SPECIAL ITEMS LIST</u>
1	HUC410	U	
1	HUC412	U	
22	LUS410	LJ 10	
		<u>MISC MATERIAL</u>	
Chesapeake Homes			
6260		ELEV:	A
Farm @ Neils Creek			
Harnett		NC	LOT: 158
<div>•</div> <div>•</div> <div>•</div>		<u>APPWRIGHT #</u>	
		44586228	
		<u>CODE:</u>	IRC 2015
		<u>WIND:</u>	
		M.P.H.	115 MPH
<u>DESIGNED BY:</u>		<u>HATCH LEGEND</u>	
CFC			
<u>LAYOUT:</u>		ATTIC ROOM	
A-FL-R			
<u>L/O DATE:</u>		VOLUME CEILING	
4/15/2025			
		STICK FRAMING	

Summation of limited excerpts of the Code, ANSI/TPI 1-2014, and BCSI, and associated commentary, are provided within the truss submittal package in the Builders FirstSource Component Truss Responsibility and Liability Disclosure. These critical excerpts include, among other elements, critical safety information as well as specific Scope-of-Work assignments (and limitations of the same) for the Owner, Contractor, Building Designer, Truss Designer, and Truss Manufacturer. It is essential that ALL parties to the design and use of the trusses review and become familiar with the information provided in the Builders FirstSource Component Truss Responsibility and Liability Disclosure, as well as the referenced sources, prior to performing work on the associated project.

