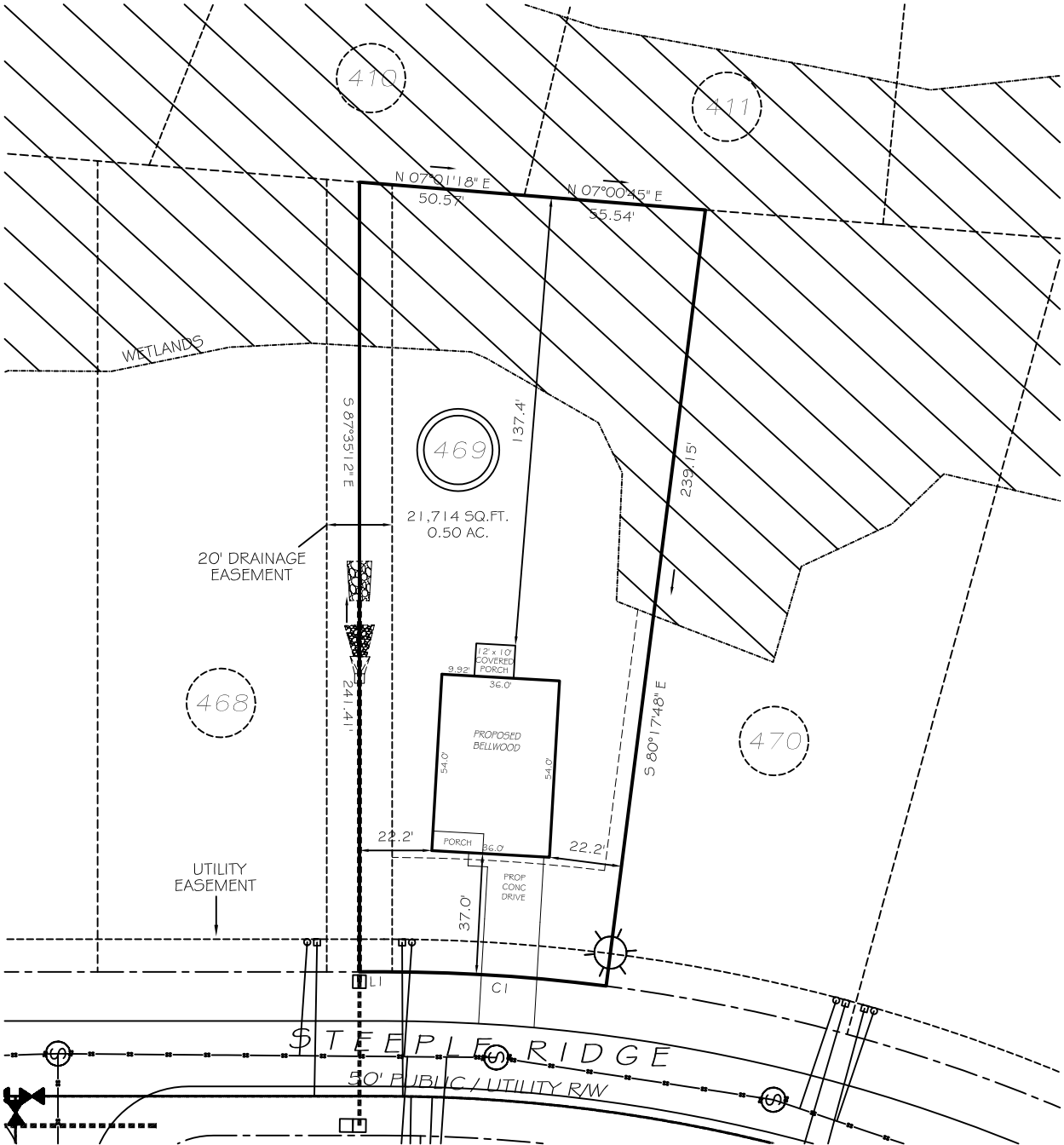


I, MICHAEL P. GRIFFIN, certify that under my direction and supervision this map was drawn from an actual field survey; that the error of closure of the survey as calculated by coordinates is 1: 10,000+; that the area shown hereon was calculated by coordinates. Dashed lines shown hereon were not surveyed. Witness my hand and seal this day of MONTH 2025.

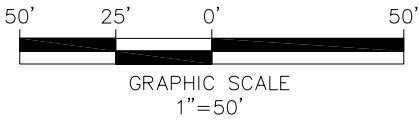
BK 2024 PG5 159-160  
HARNETT CO. REGISTRY



SETBACKS

FRONT	35'
REAR	25'
SIDE (ONE SIDE)	5'
SIDE (ONE SIDE)	10'
CORNER SIDE	20'

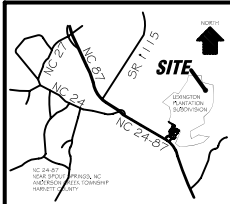
LI S02°24'48"W 7.54'  
CI R=535.00' L=68.07' S06°03'30"W 68.02'



LEGEND

PRELIMINARY  
NOT FOR RECORDATION,  
SALES OR CONVEYANCE

EIP	EXISTING IRON PIPE	FES	FLARED END SECTION
IPS	IRON PIPE SET	WM	WATER METER
R/W	RIGHT OF WAY	CO	CLEAN OUT
N/F	NOW OR FORMERLY	FH	FIRE HYDRANT
EIS	EXISTING IRON STAKE	CB	CATCH BASIN



GRIFFIN LAND SURVEYING, INC.

P. O. BOX 148  
FUQUAY-VARINA, NC 27526  
(919) - 567 - 1963

FIRM LIC.# C-1345

PLOT PLAN  
FOR  
**DREAM FINDERS HOMES, LLC**  
**LEXINGTON PLANTATION**  
**LOT 469**  
STEEPLE RIDGE  
NORTH CAROLINA  
HARNETT COUNTY ANDERSON CREEK TOWNSHIP

DRAWN BY **KDF**

DATE **4/4/25**

CHECKED BY **MPG**

SCALE **1" = 30'**