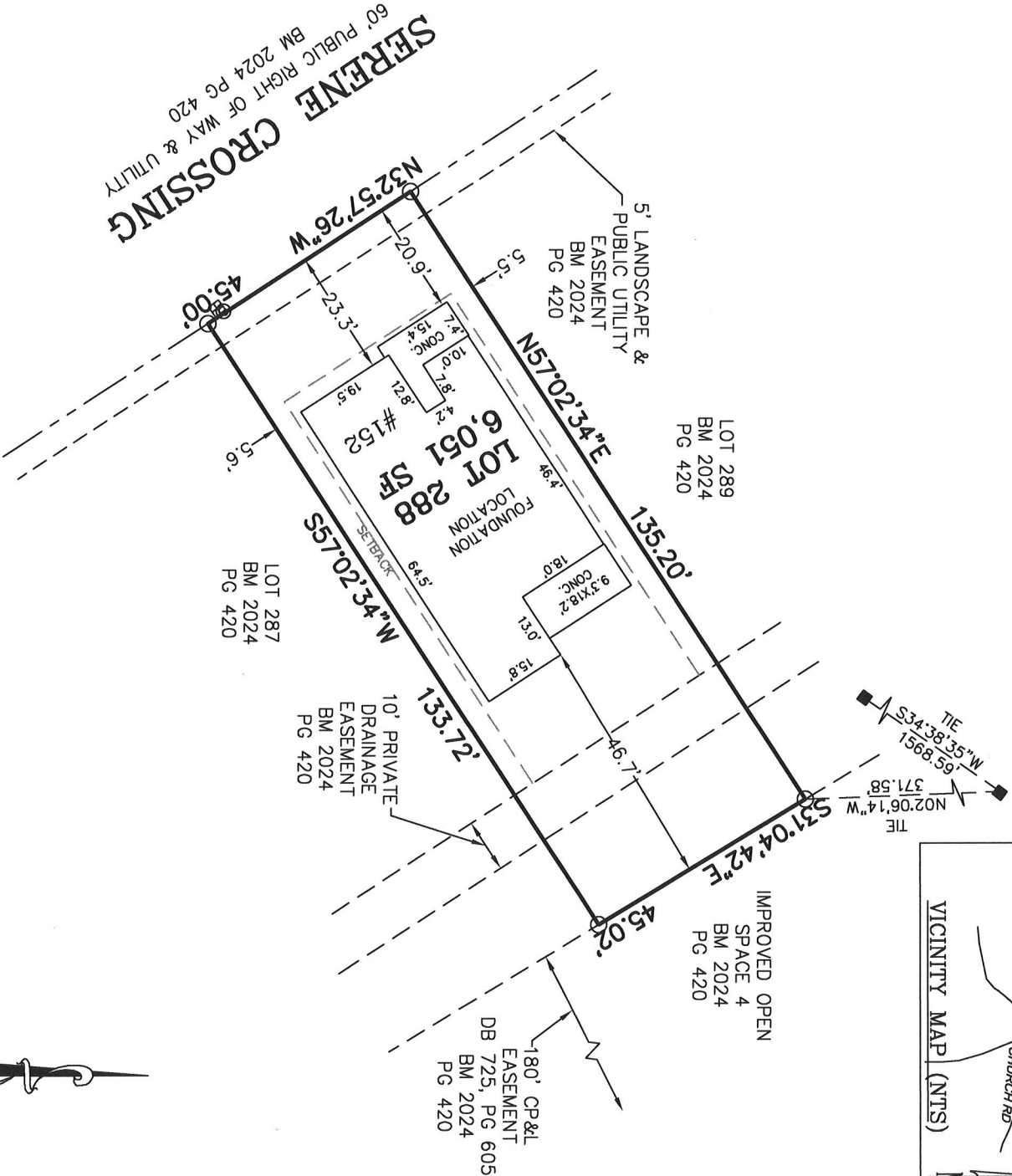
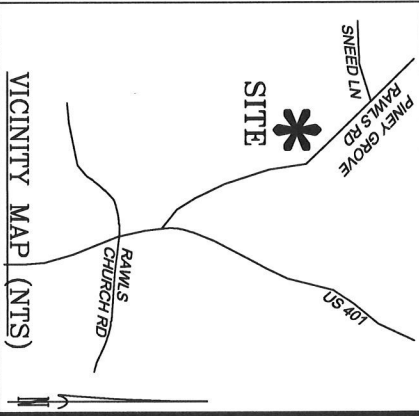
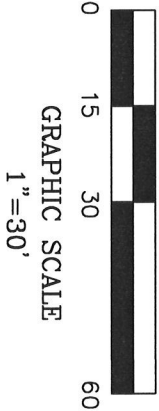


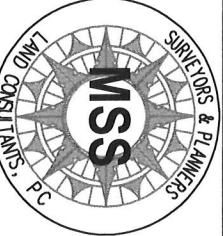
LEGEND

- MATHEMATICAL POINT
- SUBDIVISION CONTROL CORNER



SERENITY SUBDIVISION, PHASE 6A  
HECTORS CREEK TOWNSHIP, HARNETT COUNTY, NC

SURVEYED FOR  
TRI POINTE HOMES HOLDINGS, INC.  
5440 WADE PARK BLVD #400  
RALEIGH, NC 27607

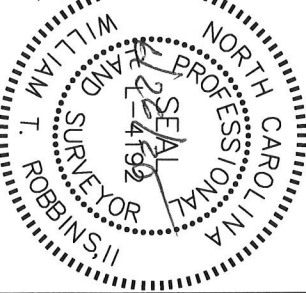


**MSS LAND CONSULTANTS, PC**  
"Committed to Total Quality Service"  
Firm License: C-2070  
EST. 1998  
6118 St. Giles St  
(Suite E)  
Raleigh, NC 27612  
Phone (919) 510-4464  
Fax (919) 510-9102  
Email: hayesw@mssland.com

DATE: 06/23/2025 SCALE: 1"=30' DRAWN:BP CHECK: FILE: TPH-24-03

FOUNDATION LOCATION  
LOT 288

I HEREBY CERTIFY THAT THIS FOUNDATION IS CORRECT AS SHOWN AND THAT THERE ARE NO ENCROACHMENTS UNLESS OTHERWISE SHOWN. THIS IS NOT A SURVEY. THIS PLAT DOES NOT CONFORM TO GS-47-30 AS AMENDED AND IS NOT FOR RECORPORATION. THE DIMENSIONS SHOWN HEREON FROM THE PROPERTY LINES TO THE FOUNDATION ARE NOT INTENDED TO MONUMENT THE PROPERTY LINES OR TO GUIDE IN THE ERECTION OF FENCES OR ANY OTHER IMPROVEMENT. THIS SURVEY WAS PREPARED FOR THE PARTIES AND PURPOSE INDICATED HEREON. ANY EXTENSION OF THE USE BEYOND THE PURPOSE AGREED TO BETWEEN THE CLIENT AND SURVEYOR EXCEEDS THE SCOPE OF ENGAGEMENT.



WILLIAM T. ROBBINS, II, PLS L-4192