

AOWE ATO INSTALLATION REPORT

PACK-ONE PLLC

Stephen Bristow

920 Garner Road

Selma NC 27576

919-906-4737

Stevebristow57@gmail.com

July 17, 2025

RE: Typo on Construction Authorization

Briarwood Bluff Lot 17

27 Pine Vista Way Sanford, NC 27332

PIN 9588-75-4470

Ownership:

Smith Douglas Homes

3412 Apex Peakway

Apex, NC 27502

Septic System Installer:

Ricky Noto

A and R Residential

845-742-8576

Mark Osburne REHS, Harnett County Health Department:

The original drawing for this system called for 280' of line according to the drawing, but had a typo on the construction authorization as 346'. The system was installed accurately according to the design as 4x70' lines. The installed system meets all state requirements.

Please let me know if you have any questions,

Stephen W Bristow

Stephen W. Bristow, NCLSS # 1167, NC AOWE # 12, NC REHS #904

Attachments:

"As Built" Diagram

Briarwood Bluff Lot 17 System Detail "As Built"

7 SF

JS = 1,974 SF
= 7.00%

Elevation Table

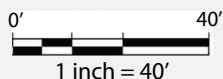
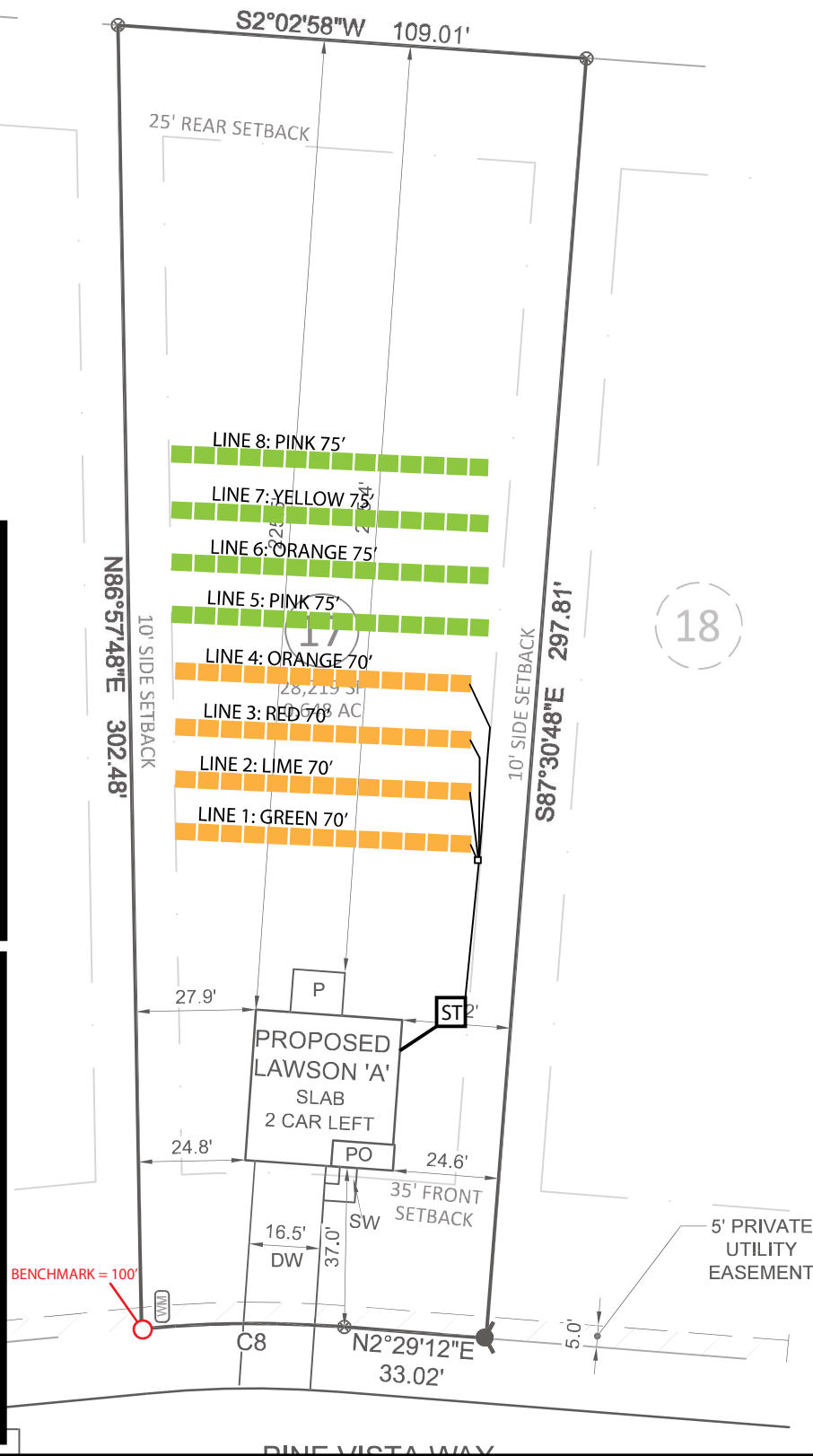
Benchmark = 100'

Line 1 = 99.2'
Line 2 = 99.0'
Line 3 = 98.0'
Line 4 = 97.7'
Line 5 = 97.1'
Line 6 = 96.6'
Line 7 = 96.2'
Line 8 = 95.9'

System Details

Initial:
1060 gal Septic Tank
0.35 LTAR
Lines 1-4 (280')
Accepted - Gravity
Distribution - Parallel
Product - Q4 Chamber
32" MTD

Repair:
1060 gal Septic Tank
0.35 LTAR
Lines 5-8 (300')
Accepted - Gravity
Distribution - Parallel
Product - Q4 Chamber
32" MTD



Legend

Initial ■■■■■
Repair ■■■■■

