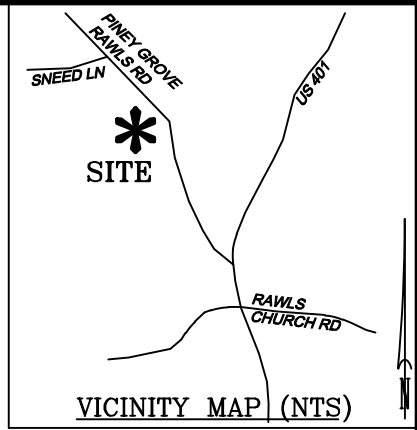
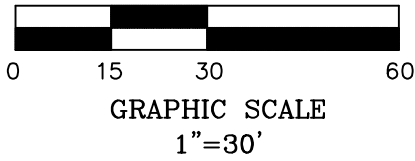
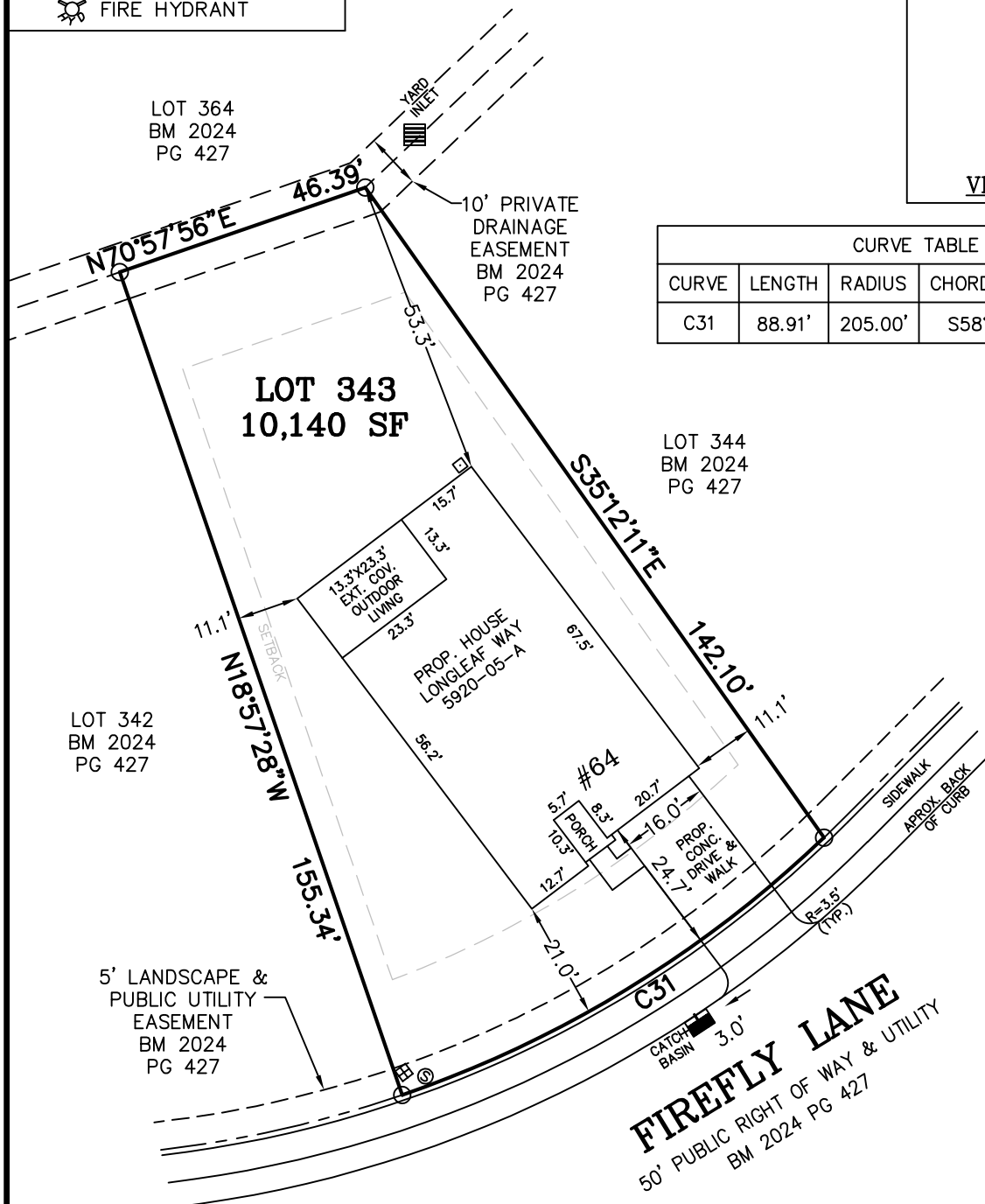


**LEGEND**

- MATHEMATICAL POINT
- CONTROL CORNER
- ▣ WATER METER
- ⊙ SEWER CLEAN OUT
- ⊗ FIRE HYDRANT



CURVE TABLE				
CURVE	LENGTH	RADIUS	CHORD BEARING	CHORD
C31	88.91'	205.00'	S58°37'05"W	88.21'



SEE NOTES

**NOTES:**

- REFERENCE HARNETT CO. BM 2024, PG 425-432 FOR BOUNDARY INFORMATION, NORTH INDEX & TIE LINES TO SUBDIVISION CONTROL CORNERS.
- ZONED: RA-30, RA-40, & CONSERVATION.
- SETBACKS, PER BM 2024 PG 425:  
 >43' LOT WIDTH:  
 FRONT YARD-20', SIDE YARD-5', REAR YARD-20', CORNER YARD-12'.  
 <=43' LOT WIDTH:  
 FRONT YARD-20', SIDE YARD- 4' & 4' OR 0' & 8', REAR YARD-20', CORNER YARD 12'.
- PROPERTY IS NOT LOCATED WITHIN A SPECIAL FLOOD HAZARD AREA AS SCALED FROM THE NFIP FIRM No. 3720065500L (EFFECTIVE DATE: JULY 19, 2022) AND/OR 3720064500J (EFFECTIVE DATE: 10/3/2006), AND/OR 3720064400J (EFFECTIVE DATE: 10/3/2006).


MAXIMUM ALLOWABLE IMPERVIOUS-3,650 SF

TOTAL ESTIMATED IMPERVIOUS-3,109 SF	
SITE	SQ. FT.
HOUSE	2,355
DRIVEWAY	395
LEAD WALK	40
COV. PORCH	310
PAD	0
A/C PAD	9

**PERMIT PLAN LOT: 343**

SERENITY SUBDIVISION, PHASE 6B  
HECTORS CREEK TOWNSHIP, HARNETT COUNTY, NC

SURVEYED FOR  
**TRI POINTE HOMES HOLDINGS, INC.**  
5440 WADE PARK BLVD #400  
RALEIGH, NC 27607



**MSS LAND CONSULTANTS, PC**  
"Committed to Total Quality Service"  
Firm License: C-2070  
E S T. 1 9 9 8

6118 St. Giles St Phone (919) 510-4464  
(Suite E) Fax (919) 510-9102  
Raleigh, NC 27612 Email: hayesm@mssland.com

I HEREBY CERTIFY THAT THE BUILDING WILL LIE WHOLLY ON THE LOT. THIS PLAT IS OF AN EXISTING PARCEL OF LAND. THIS IS NOT A SURVEY AND NOT FOR RECORDATION PURPOSES.

**PRELIMINARY PLAN**

MATTHEW A. HAYES, PLS L-4516

O:\\_TRI\_POINTE\_HOMES\TPH-24-03\_SERENITY\DWG\343.dwg\_Layout1\_4/7/2025 2:55:24 PM\_crawfordc, 1:1