

AS-BUILT IMPROVEMENTS FOR
NEW HOME, INC.
455 BEACON HILL ROAD
LOT 28, DUNCAN'S CREEK, PHASE 2
UPPER LITTLE CREEK TOWNSHIP, HARNETT COUNTY, NORTH CAROLINA

LEGEND

- AIR CONDITIONER
BACK OF CURB
BACK FLOW PREVENTER
CLEANOUT
CURB INLET
CURB INLET
DHS
DRILL HOLE SET
EXISTING CONCRETE MONUMENT
EDH
EXISTING DRILL HOLE
EIS
EXISTING IRON STAKE
EIP
EXISTING IRON PIPE
EM
ELECTRIC METER
EPK
EXISTING PK NAIL
ES
ELECTRIC STUB
FLARED END SECTION
FIRE HYDRANT
FIBER OPTIC PEDESTAL
GAS METER
GUY
INVERT
IRON PIPE SET
IRON ROD SET
LIGHT POLE
MNS
MAGNETIC NAIL SET
MANHOLE SANITARY SEWER
MANHOLE STORM SEWER
OVERHEAD WIRES
PK NAIL SET
POINT NOT SET
RAIL ROAD SPIKE
TELEPHONE PEDESTAL
TRANSFORMER
CABLE TV PEDESTAL
UTILITY POLE
WATER METER
WATER VALVE
YARD INLET
FIELD MEASUREMENT

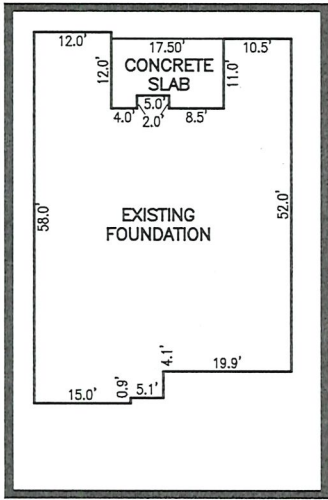
N/F
JOHNNY LYWOOD HOLLAND
D.B. 2433, PG. 915
PLAT CABINET F SLIDE 586-A

B.M. 2025, PGS. 40-43

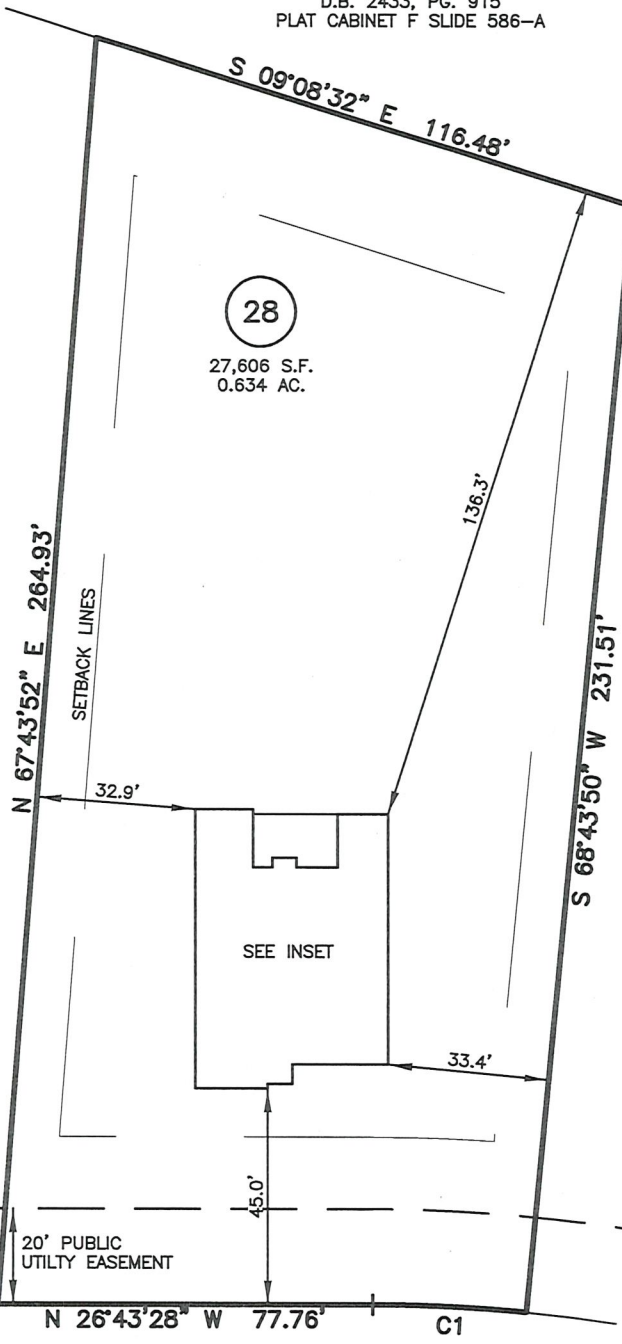
28
27,606 S.F.
0.634 AC.

27

29



INSET SCALE: 1"=30"



SETBACK INFO

FRONT: 35'
REAR: 25'
SIDES: 10'
CORNER SIDE: 20'

BEACON HILL ROAD
50' PUBLIC R/W

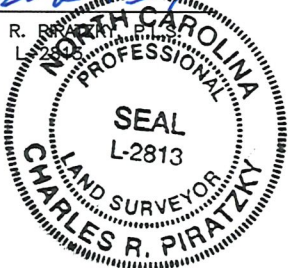
CURVE	RADIUS	ARC	DELTA	CHORD BRG	CHORD DIS
C1	335.00'	31.89'	5°27'18"	N 23°59'49" W	31.88'

THIS AS-BUILT IS
FOR CODE COMPLIANCE.
NOT FOR SALES OR
CONVEYANCE

WAKE COUNTY, NORTH CAROLINA

I CERTIFY THAT THIS MAP WAS DRAWN UNDER MY
SUPERVISION FROM FIELDWORK DONE UNDER
MY SUPERVISION; THAT THE IMPROVEMENTS LIE
WHOLLY UPON THE LOT AND THAT THE PROPERTY
SHOWN IS AN EXISTING PARCEL OR PARCELS OF
LAND.

CHARLES R. PIRATZKY



5-28-25

DATE

DATE: MAY 20, 2025

Q:\FieldLoc\DNCK 28_FDN.txt

REFERENCES:

B.M. 2025, PGS. 40-43



SCALE: 1" = 40'

NOTES

1. THIS SURVEY SUBJECT TO ANY FACTS THAT MAY BE DISCLOSED BY A FULL AND ACCURATE TITLE SEARCH.
2. THIS MAP MAY NOT BE A CERTIFIED SURVEY AND HAS NOT BEEN REVIEWED BY A LOCAL GOVERNMENT AGENCY FOR COMPLIANCE WITH ANY APPLICABLE LAND DEVELOPMENT REGULATIONS AND HAS NOT BEEN REVIEWED FOR COMPLIANCE WITH RECORDING REQUIREMENTS FOR PLATS.

RWK, PA
ENGINEERING ~ SURVEYING
CORPORATE LICENSE: C-1771
101 W. MAIN ST., SUITE 202
GARNER, NC 27529
PHONE (919) 779-4854
FAX (919) 779-4056

Q:\DUNCAN'S CREEK\DNCK28\DNCK 28.DWG