

Trenco

818 Soundside Rd
Edenton, NC 27932

Re: J0325-1347
Lot 1 Mabry Ridge

The truss drawing(s) referenced below have been prepared by Truss Engineering Co. under my direct supervision based on the parameters provided by Comtech, Inc - Fayetteville.

Pages or sheets covered by this seal: I74375158 thru I74375159

My license renewal date for the state of North Carolina is December 31, 2025.

North Carolina COA: C-0844



June 23, 2025

Gilbert, Eric

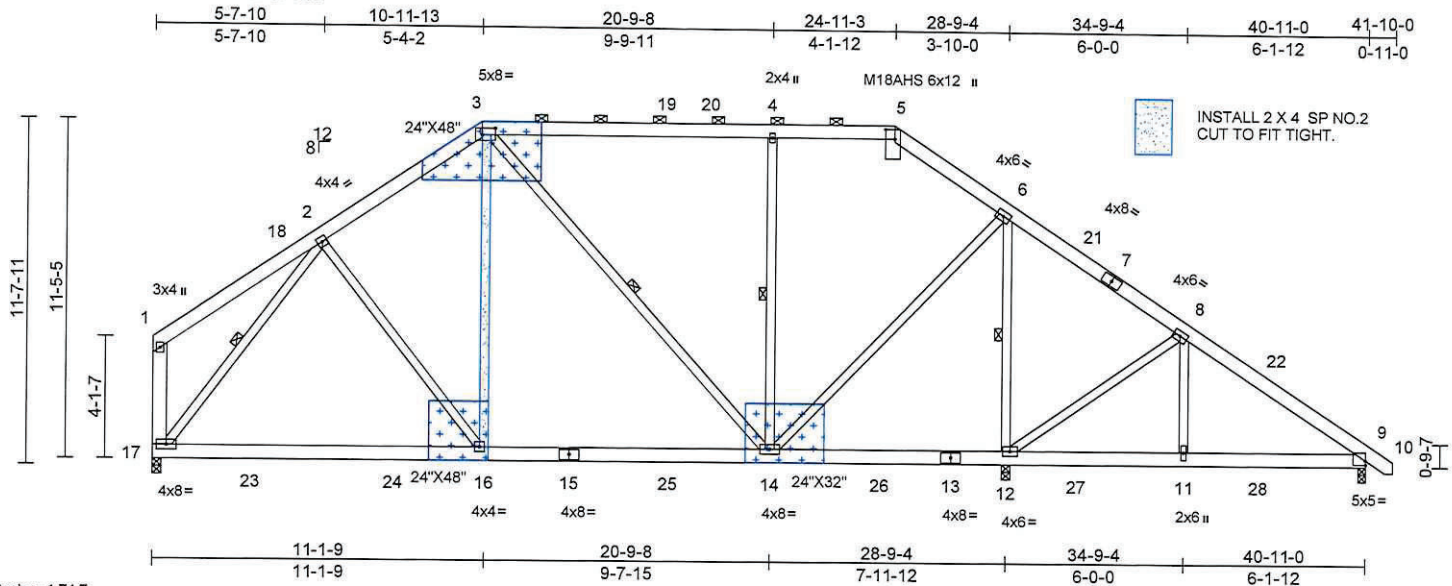
IMPORTANT NOTE: The seal on these truss component designs is a certification that the engineer named is licensed in the jurisdiction(s) identified and that the designs comply with ANSI/TPI 1. These designs are based upon parameters shown (e.g., loads, supports, dimensions, shapes and design codes), which were given to MiTek or TRENCO. Any project specific information included is for MiTek's or TRENCO's customers file reference purpose only, and was not taken into account in the preparation of these designs. MiTek or TRENCO has not independently verified the applicability of the design parameters or the designs for any particular building. Before use, the building designer should verify applicability of design parameters and properly incorporate these designs into the overall building design per ANSI/TPI 1, Chapter 2.

Job	Truss	Truss Type	Qty	Ply	Lot 1 Mabry Ridge	
J0325-1347	A2	Piggyback Base	6	1	Job Reference (optional)	174375158

Comtech, Inc, Fayetteville, NC - 28314,
REPAIR:
REPLACE WEB 3-16.
TRUSS A2 INSTALLED IN PLACE OF A03

Run: 8.63 E Jul 12 2024 Print: 8.630 E Jul 12 2024 MiTek Industries, Inc. Mon Jun 23 12:16:24
ID:2GNsYO62BI49KgBFP3SImayOXVO-fySX281ZFNmgFSen2xTWKJt1c4VVbvrYE?ahHz3PCL

Page: 1



Scale = 1:74.7

Plate Offsets (X, Y): [3:0-5-4,0-2-12], [5:0-4-0,0-3-12], [9:Edge,0-1-11]

Loading	(psf)	Spacing	2-0-0	CSI	DEFL	in	(loc)	l/defl	L/d	PLATES	GRIP
TCLL (roof)	20.0	Plate Grip DOL	1.15	TC	0.49	Vert(LL)	-0.19	16-17	>999	360	MT20 244/190
TCDL	10.0	Lumber DOL	1.15	BC	0.61	Vert(CT)	-0.28	16-17	>999	240	M18AHS 186/179
BCLL	0.0*	Rep Stress Incr	NO	WB	0.59	Horz(CT)	0.01	12	n/a	n/a	
BCDL	10.0	Code	IRC2021/TPI2014	Matrix-S		Wind(LL)	0.04	14-16	>999	240	Weight: 338 lb FT = 20%

LUMBER

TOP CHORD 2x6 SP No.1
BOT CHORD 2x6 SP No.1
WEBS 2x4 SP No.2 *Except* 17-1:2x6 SP No.1

BRACING

TOP CHORD Structural wood sheathing directly applied or 6-0-0 oc purlins, except end verticals, and 2-0-0 oc purlins (6-0-0 max.): 3-5.

BOT CHORD Rigid ceiling directly applied or 6-0-0 oc bracing.

WEBS 1 Row at midpt 3-14, 4-14, 2-17, 6-12

REACTIONS (lb/size) 9=242/0-3-0, 12=2041/0-3-8, 17=1017/0-3-8
Max Horiz 17=262 (LC 8)
Max Uplift 9=74 (LC 8), 12=178 (LC 8), 17=21 (LC 12)
Max Grav 9=274 (LC 26), 12=2520 (LC 2), 17=1273 (LC 19)

FORCES (lb) - Max. Comp./Max. Ten. - All forces 250 (lb) or less except when shown.

TOP CHORD 2-3=-1020/199, 3-19=-468/168, 19-20=-467/168, 4-20=-467/168, 4-5=-468/168, 5-6=-565/170, 6-21=-147/710, 7-21=-147/686, 7-8=-171/652, 8-22=-92/419, 9-22=-132/365

BOT CHORD 17-23=-148/843, 23-24=-148/843, 16-24=-148/843, 15-16=-84/888, 15-25=-84/888, 14-25=-84/888, 14-26=-591/315, 13-26=-591/315, 12-13=-591/315, 12-27=-296/114, 11-27=-296/114, 11-28=-296/114, 9-28=-296/114

WEBS 3-16=-8/604, 3-14=-565/88, 4-14=-465/188, 6-14=-187/1484, 8-12=-530/445, 8-11=-292/238, 2-17=-1045/122, 6-12=-1838/384

NOTES



ATTACH 1/2" PLYWOOD OR OSB GUSSET (15/32" RATED SHEATHING 32/16 EXP 1) TO EACH FACE OF TRUSS WITH (0.131" X 2.5" MIN.) NAILS PER THE FOLLOWING NAIL SCHEDULE: 2 X 3'S - 2 ROWS, 2 X 4'S - 3 ROWS, 2 X 6'S AND LARGER - 4 ROWS: SPACED @ 4" O.C. NAILS TO BE DRIVEN FROM BOTH FACES. STAGGER SPACING FROM FRONT TO BACK FACE FOR A NET 2" O.C. SPACING IN EACH COVERED TRUSS MEMBER. USE 2" MEMBER END DISTANCE.

- 1) Unbalanced roof live loads have been considered for this design.
- 2) Wind: ASCE 7-16; Vult=130mph (3-second gust) Vasd=103mph; TCDL=6.0psf; BCDL=6.0psf; h=15ft; Cat. II; Exp C; Enclosed; MWFRS (envelope) and C-C Exterior(2E) 0-2-12 to 4-7-9, Interior (1) 4-7-9 to 10-11-13, Exterior(2R) 10-11-13 to 17-2-7, Interior (1) 17-2-7 to 24-11-3, Exterior(2R) 24-11-3 to 31-1-14, Interior (1) 31-1-14 to 41-8-7 zone; porch right exposed; C-C for members and forces & MWFRS for reactions shown; Lumber DOL=1.60 plate grip DOL=1.60
- 3) Provide adequate drainage to prevent water ponding.
- 4) All plates are MT20 plates unless otherwise indicated.
- 5) The Fabrication Tolerance at joint 5 = 0%
- 6) This truss has been designed for a 10.0 psf bottom chord live load nonconcurrent with any other live loads.
- 7) * This truss has been designed for a live load of 30.0psf on the bottom chord in all areas where a rectangle 3-06-00 tall by 2-00-00 wide will fit between the bottom chord and any other members, with BCDL = 10.0psf.
- 8) Provide mechanical connection (by others) of truss to bearing plate capable of withstanding 178 lb uplift at joint 12, 21 lb uplift at joint 17 and 74 lb uplift at joint 9.
- 9) Graphical purlin representation does not depict the size or the orientation of the purlin along the top and/or bottom chord.

LOAD CASE(S) Standard



June 23, 2025

WARNING - Verify design parameters and READ NOTES ON THIS AND INCLUDED MITEK REFERENCE PAGE MII-7473 rev. 1/2/2023 BEFORE USE.

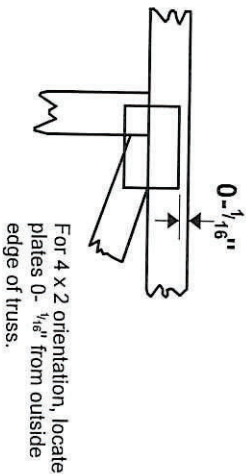
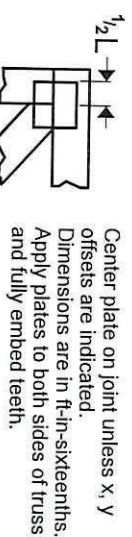
Design valid for use only with MiTek® connectors. This design is based only upon parameters shown, and is for an individual building component, not a truss system. Before use, the building designer must verify the applicability of design parameters and properly incorporate this design into the overall building design. Bracing indicated is to prevent buckling of individual truss web and/or chord members only. Additional temporary and permanent bracing is always required for stability and to prevent collapse with possible personal injury and property damage. For general guidance regarding the fabrication, storage, delivery, erection and bracing of trusses and truss systems, see ANSI/TPI1 Quality Criteria and DSB-22 available from Truss Plate Institute (www.tpinstitute.org) and BCSI Building Component Safety Information available from the Structural Building Component Association (www.sbcacompcomponents.com)

ENGINEERING BY
TRENCO
A MiTek Affiliate

818 Soundside Road
Edenton, NC 27932

Symbols

PLATE LOCATION AND ORIENTATION



* Plate location details available in MITek software or upon request.

PLATE SIZE

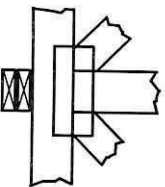
4 X 4

The first dimension is the plate width measured perpendicular to slots. Second dimension is the length parallel to slots.

LATERAL BRACING LOCATION



BEARING

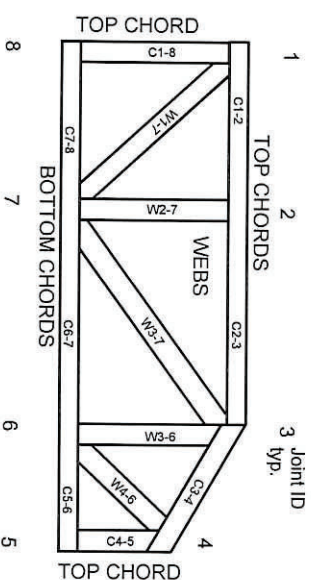


Industry Standards:

ANSI/TP1: National Design Specification for Metal Plate Connected Wood Truss Construction.
DSB-22: Design Standard for Bracing.
BCSI: Building Component Safety Information, Guide to Good Practice for Handling, Installing, Restraining & Bracing of Metal Plate Connected Wood Trusses.

Numbering System

6-4-8 dimensions shown in fractions of an inch (Drawings not to scale)



JOINTS ARE GENERALLY NUMBERED/CLOCKWISE AROUND THE TRUSS STARTING AT THE JOINT FARTHEST TO THE LEFT.

CHORDS AND WEBS ARE IDENTIFIED BY END JOINT NUMBERS/LETTERS.

Product Code Approvals

ICC-ES Reports:

ESR-1988, ESR-2362, ESR-2685, ESR-3282
ESR-4722, ESL-1388

Design General Notes

Trusses are designed for wind loads in the plane of the truss unless otherwise shown.

Lumber design values are in accordance with ANSI/TP1 section 6.3. These truss designs rely on lumber values established by others.

© 2023 MITek® All Rights Reserved

MITek

**ENGINEERING BY
TRENGCO**
A MITek Affiliate

MITek Engineering Reference Sheet: MIL-7473 rev. 1/2/2023

General Safety Notes

Failure to Follow Could Cause Property Damage or Personal Injury

1. Additional stability bracing for truss system, e.g. diagonal or X-bracing, is always required. See BCSI.
2. Truss bracing must be designed by an engineer. For wide truss spacing, individual lateral braces themselves may require bracing, or alternative Tor I bracing should be considered.
3. Never exceed the design loading shown and never stack materials on inadequately braced trusses.
4. Provide copies of this truss design to the building designer, erection supervisor, property owner and all other interested parties.
5. Cut members to bear tightly against each other.
6. Place plates on each face of truss at each joint and embed fully. Knots and ware at joint locations are regulated by ANSI/TP1 1.
7. Design assumes trusses will be suitably protected from the environment in accord with ANSI/TP1 1.
8. Unless otherwise noted, moisture content of lumber shall not exceed 19% at time of fabrication.
9. Unless expressly noted, this design is not applicable for use with fire retardant, preservative treated, or green lumber.
10. Camber is a non-structural consideration and is the responsibility of truss fabricator. General practice is to camber for dead load deflection.
11. Plate type, size, orientation and location dimensions indicated are minimum plating requirements.
12. Lumber used shall be of the species and size, and in all respects, equal to or better than that specified.
13. Top chords must be sheathed or purlins provided at spacing indicated on design.
14. Bottom chords require lateral bracing at 10 ft. spacing, or less, if no ceiling is installed, unless otherwise noted.
15. Connections not shown are the responsibility of others.
16. Do not cut or alter truss member or plate without prior approval of an engineer.
17. Install and load vertically unless indicated otherwise.
18. Use of green or treated lumber may pose unacceptable environmental, health or performance risks. Consult with project engineer before use.
19. Review all portions of this design (front, back, words and pictures) before use. Reviewing pictures alone is not sufficient.
20. Design assumes manufacture in accordance with ANSI/TP1 1 Quality Criteria.
21. The design does not take into account any dynamic or other loads other than those expressly stated.

Trenco
818 Soundside Rd
Edenton, NC 27932

Re: J0325-1347
Lot 1 Mabry Ridge

The truss drawing(s) referenced below have been prepared by Truss Engineering Co. under my direct supervision based on the parameters provided by Comtech, Inc - Fayetteville.

Pages or sheets covered by this seal: I74483586 thru I74483587

My license renewal date for the state of North Carolina is December 31, 2025.

North Carolina COA: C-0844



June 26, 2025

Gilbert, Eric

IMPORTANT NOTE: The seal on these truss component designs is a certification that the engineer named is licensed in the jurisdiction(s) identified and that the designs comply with ANSI/TPI 1. These designs are based upon parameters shown (e.g., loads, supports, dimensions, shapes and design codes), which were given to MiTek or TRENCO. Any project specific information included is for MiTek's or TRENCO's customers file reference purpose only, and was not taken into account in the preparation of these designs. MiTek or TRENCO has not independently verified the applicability of the design parameters or the designs for any particular building. Before use, the building designer should verify applicability of design parameters and properly incorporate these designs into the overall building design per ANSI/TPI 1, Chapter 2.

Job	Truss	Truss Type	Qty	Ply	Lot 1 Mabry Ridge	
J0325-1347	A3	Piggyback Base	3	1	Job Reference (optional)	I74483587

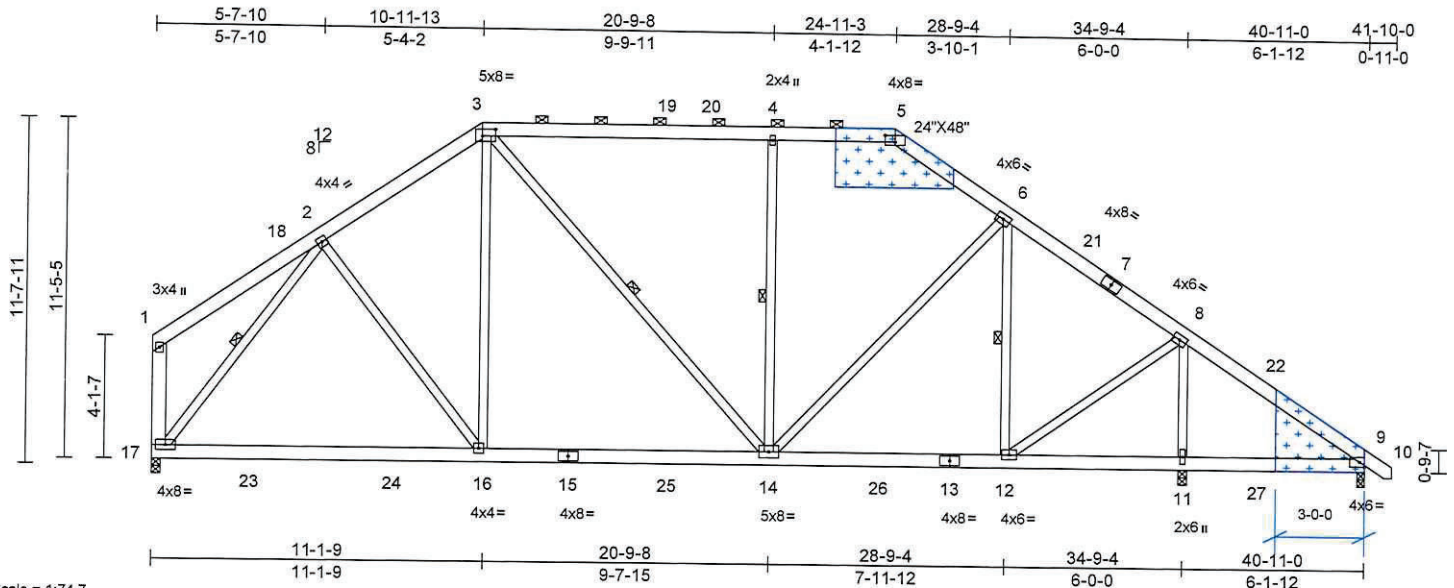
Comtech, Inc, Fayetteville, NC - 28314,

Run: 8.63 E Jul 12 2024 Print: 8.630 E Jul 12 2024 MiTek Industries, Inc. Thu Jun 26 15:31:54

Page: 1

REPAIR: MOVE BEARING AT JOINT 12 TO JOINT 11.

ID:2GNsYO62BI49KgBFP3SimayOXVO-wR5FJVqR1?yaNSDBCcZ7_NijZdlscXQ6vmRmmz2N33



Scale = 1:74.7

Plate Offsets (X, Y): [3:0-5-4,0-2-12], [5:0-4-0,0-2-13]

Loading	(psf)	Spacing	2-0-0	CSI	DEFL	in	(loc)	l/defl	L/d	PLATES	GRIP
TCLL (roof)	20.0	Plate Grip DOL	1.15	TC	0.64	Vert(LL)	-0.20	16-17	>999	360	MT20
TCDL	10.0	Lumber DOL	1.15	BC	0.63	Vert(CT)	-0.30	16-17	>999	240	244/190
BCLL	0.0*	Rep Stress Incr	NO	WB	0.82	Horz(CT)	0.02	11	n/a	n/a	
BCDL	10.0	Code	IRC2021/TPI2014	Matrix-S		Wind(LL)	0.07	14-16	>999	240	Weight: 338 lb FT = 20%

LUMBER

TOP CHORD 2x6 SP No.1
BOT CHORD 2x6 SP No.1
WEBS 2x4 SP No.2 *Except* 17-1:2x6 SP No.1

BRACING

TOP CHORD Structural wood sheathing directly applied or 6-0-0 oc purlins, except end verticals, and 2-0-0 oc purlins (5-11-5 max.): 3-5.

BOT CHORD Rigid ceiling directly applied or 6-0-0 oc bracing.

WEBS 1 Row at midpt 3-14, 4-14, 6-12, 2-17

REACTIONS (lb/size) 9=-326/0-3-0, 11=2352/0-3-8, 17=1273/0-3-8
Max Horiz 17=-262 (LC 8)
Max Uplift 9=-633 (LC 27), 11=-97 (LC 13), 17=-28 (LC 12)
Max Grav 9=56 (LC 12), 11=2875 (LC 2), 17=1588 (LC 2)

FORCES (lb) - Max. Comp./Max. Ten. - All forces 250 (lb) or less except when shown.

TOP CHORD 2-3=-1399/266, 3-19=-1039/262, 19-20=-1038/262, 4-20=-1038/263, 4-5=-1038/263, 5-6=-1137/264, 6-21=-634/119, 7-21=-672/107, 7-8=-772/87, 8-22=-242/1349, 9-22=-276/1298
BOT CHORD 17-23=-151/1055, 23-24=-151/1055, 16-24=-151/1055, 15-16=-88/1178, 15-25=-88/1178, 14-25=-88/1178, 14-26=0/524, 13-26=0/524, 12-13=0/524, 11-12=-1022/260, 11-27=-1022/260, 9-27=-1022/260

WEBS 2-16=-68/378, 3-16=-4/509, 4-14=-306/182, 6-14=-162/861, 6-12=-752/202, 2-17=-1430/184, 8-11=-2631/426, 8-12=-157/1833

NOTES

- Unbalanced roof live loads have been considered for this design.



ATTACH 1/2" PLYWOOD OR OSB GUSSET (15/32" RATED SHEATHING 32/16 EXP 1) TO EACH FACE OF TRUSS WITH (0.131" X 2.5" MIN.) NAILS PER THE FOLLOWING NAIL SCHEDULE: 2 X 3'S - 2 ROWS, 2 X 4'S - 3 ROWS, 2 X 6'S AND LARGER - 4 ROWS: SPACED @ 4" O.C. NAILS TO BE DRIVEN FROM BOTH FACES. STAGGER SPACING FROM FRONT TO BACK FACE FOR A NET 2" O.C. SPACING IN EACH COVERED TRUSS MEMBER. USE 2" MEMBER END DISTANCE.

- Wind: ASCE 7-16; Vult=130mph (3-second gust) Vasd=103mph; TCDL=6.0psf; BCDL=6.0psf; h=15ft; Cat. II; Exp C; Enclosed; MWFRS (envelope) and C-C Exterior(2E) 0-2-12 to 4-7-9, Interior (1) 4-7-9 to 10-11-13, Exterior(2R) 10-11-13 to 17-2-7, Interior (1) 17-2-7 to 24-11-3, Exterior(2R) 24-11-3 to 31-1-14, Interior (1) 31-1-14 to 41-8-7 zone; porch right exposed; C-C for members and forces & MWFRS for reactions shown; Lumber DOL=1.60 plate grip
- DOL=1.60
- Provide adequate drainage to prevent water ponding.
- This truss has been designed for a 10.0 psf bottom chord live load nonconcurrent with any other live loads.
- * This truss has been designed for a live load of 30.0psf on the bottom chord in all areas where a rectangle 3-06-00 tall by 2-00-00 wide will fit between the bottom chord and any other members, with BCDL = 10.0psf.
- Provide mechanical connection (by others) of truss to bearing plate capable of withstanding 28 lb uplift at joint 17, 97 lb uplift at joint 11 and 633 lb uplift at joint 9.
- Graphical purlin representation does not depict the size or the orientation of the purlin along the top and/or bottom chord.

LOAD CASE(S) Standard



June 26, 2025

WARNING - Verify design parameters and READ NOTES ON THIS AND INCLUDED MITEK REFERENCE PAGE MII-7473 rev. 1/2/2023 BEFORE USE.

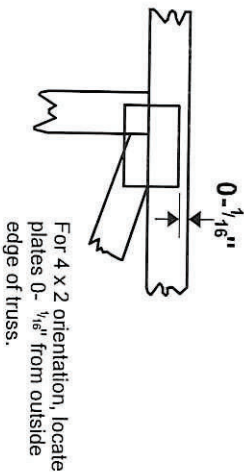
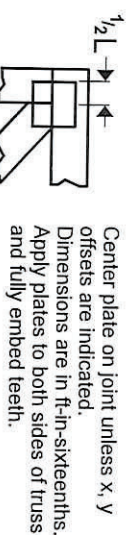
Design valid for use only with MiTek® connectors. This design is based only upon parameters shown, and is for an individual building component, not a truss system. Before use, the building designer must verify the applicability of design parameters and properly incorporate this design into the overall building design. Bracing indicated is to prevent buckling of individual truss web and/or chord members only. Additional temporary and permanent bracing is always required for stability and to prevent collapse with possible personal injury and property damage. For general guidance regarding the fabrication, storage, delivery, erection and bracing of trusses and truss systems, see ANSI/TPI1 Quality Criteria and DSB-22 available from Truss Plate Institute (www.tpinst.org) and BCSI Building Component Safety Information available from the Structural Building Component Association (www.sbcacomponents.com)

ENGINEERING BY
TRENCO
A MiTek Affiliate

818 Soundside Road
Edenton, NC 27932

Symbols

PLATE LOCATION AND ORIENTATION



— This symbol indicates the required direction of slots in connector plates.

* Plate location details available in MiTek software or upon request.

PLATE SIZE

4 X 4

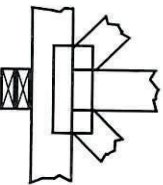
The first dimension is the plate width measured perpendicular to slots. Second dimension is the length parallel to slots.

LATERAL BRACING LOCATION



Indicated by symbol shown and/or by text in the bracing section of the output. Use T or I bracing if indicated.

BEARING



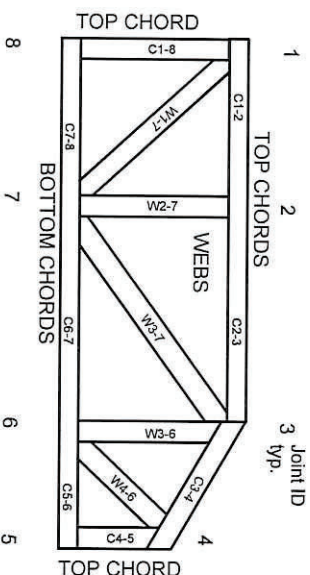
Indicates location where bearings (supports) occur. Icons vary but reaction section indicates joint number/letter where bearings occur. Min size shown is for crushing only.

Industry Standards:

ANSI/TP1: National Design Specification for Metal Plate Connected Wood Truss Construction.
DSB-22: Design Standard for Bracing.
BCSI: Building Component Safety Information, Guide to Good Practice for Handling, Installing, Restraining & Bracing of Metal Plate Connected Wood Trusses.

Numbering System

6-4-8 dimensions shown in ft-in-sixteenths (Drawings not to scale)



JOINTS ARE GENERALLY NUMBERED/LETTERED CLOCKWISE AROUND THE TRUSS STARTING AT THE JOINT FARTHEST TO THE LEFT.

CHORDS AND WEBS ARE IDENTIFIED BY END JOINT NUMBERS/LETTERS.

Product Code Approvals

ICC-ES Reports:

ESR-1988, ESR-2362, ESR-2685, ESR-3282
ESR-4722, ESL-1388

Design General Notes

Trusses are designed for wind loads in the plane of the truss unless otherwise shown.

Lumber design values are in accordance with ANSI/TP1 section 6.3. These truss designs rely on lumber values established by others.

© 2023 MiTek® All Rights Reserved

MiTek

**ENGINEERING BY
TRENGO**
A MiTek Affiliate

MiTek Engineering Reference Sheet: MLI-7473 rev. 1/2/2023

General Safety Notes

Failure to Follow Could Cause Property Damage or Personal Injury

1. Additional stability bracing for truss system, e.g. diagonal or X-bracing, is always required. See BCSI.
2. Truss bracing must be designed by an engineer. For wide truss spacing, individual lateral braces themselves may require bracing, or alternative Tor I bracing should be considered.
3. Never exceed the design loading shown and never stack materials on inadequately braced trusses.
4. Provide copies of this truss design to the building designer, erection supervisor, property owner and all other interested parties.
5. Cut members to bear tightly against each other.
6. Place plates on each face of truss at each joint and embed fully. Knots and wane at joint locations are regulated by ANSI/TP1.
7. Design assumes trusses will be suitably protected from the environment in accord with ANSI/TP1.
8. Unless otherwise noted, moisture content of lumber shall not exceed 19% at time of fabrication.
9. Unless expressly noted, this design is not applicable for use with fire retardant, preservative treated, or green lumber.
10. Gamber is a non-structural consideration and is the responsibility of truss fabricator. General practice is to camber for dead load deflection.
11. Plate type, size, orientation and location dimensions indicated are minimum plating requirements.
12. Lumber used shall be of the species and size, and in all respects, equal to or better than that specified.
13. Top chords must be sheathed or purlins provided at spacing indicated on design.
14. Bottom chords require lateral bracing at 10 ft. spacing, or less, if no ceiling is installed, unless otherwise noted.
15. Connections not shown are the responsibility of others.
16. Do not cut or alter truss member or plate without prior approval of an engineer.
17. Install and load vertically unless indicated otherwise.
18. Use of green or treated lumber may pose unacceptable environmental, health or performance risks. Consult with project engineer before use.
19. Review all portions of this design (front, back, words and pictures) before use. Reviewing pictures alone is not sufficient.
20. Design assumes manufacture in accordance with ANSI/TP1 Quality Criteria.
21. The design does not take into account any dynamic or other loads other than those expressly stated.