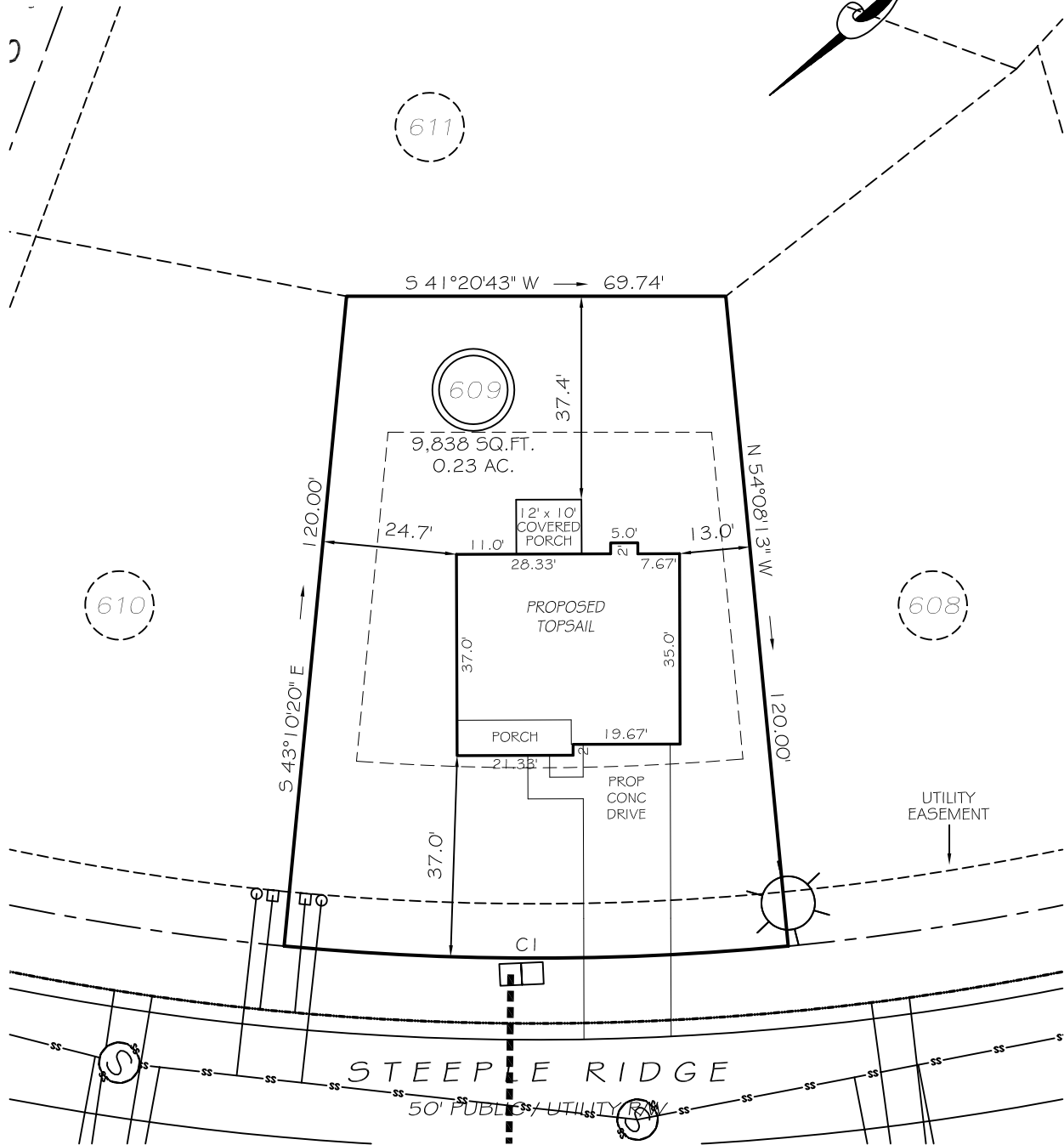


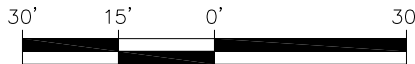
I, MICHAEL P. GRIFFIN, certify that under my direction and supervision this map was drawn from an actual field survey; that the error of closure of the survey as calculated by coordinates is 1: 10,000+; that the area shown hereon was calculated by coordinates. Dashed lines shown hereon were not surveyed. Witness my hand and seal this day of MONTH 2025.

PK 2024 FGS 159-160  
HARNETT CO. REGISTRY



SETBACKS

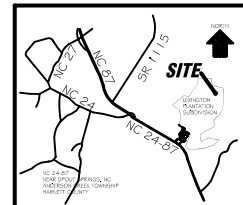
FRONT	35'
REAR	25'
SIDE (ONE SIDE)	5'
SIDE (ONE SIDE)	10'
CORNER SIDE	20'



GRAPHIC SCALE  
1"=30'

LEGEND

EIP	EXISTING IRON PIPE	FES	FLARED END SECTION
IPS	IRON PIPE SET	WM	WATER METER
R/W	RIGHT OF WAY	CO	CLEAN OUT
N/F	NOW OR FORMERLY	FH	FIRE HYDRANT
EIS	EXISTING IRON STAKE	CB	CATCH BASIN



REVISION: NEW PLANS 3/13/25

CI R=485.00' L=92.81' N41°20'43"E 92.67'

**P R E L I M I N A R Y**  
NOT FOR RECORDATION,  
SALES OR CONVEYANCE



GRIFFIN LAND SURVEYING, INC.

P. O. BOX 148  
FUQUAY-VARINA, NC 27526  
(919) - 567 - 1963

FIRM LIC.# C-1345

DRAWN BY **KDF**

DATE **3/13/25**

CHECKED BY **MPG**

SCALE **1" = 30'**

**PLOT PLAN**  
FOR

**DREAM FINDERS HOMES, LLC**

**LEXINGTON PLANTATION**

**LOT 609**

STEEPLE RIDGE

NORTH CAROLINA

HARNETT COUNTY ANDERSON CREEK TOWNSHIP