

PRELIMINARY PLOT PLAN FOR

MUNGO HOMES

LOT 33, CAMBRIDGE SUBDIVISION

366 BUNKER HILL PLACE

REF: P.B. 2025, PG.7

NEILL’S CREEK TOWNSHIP

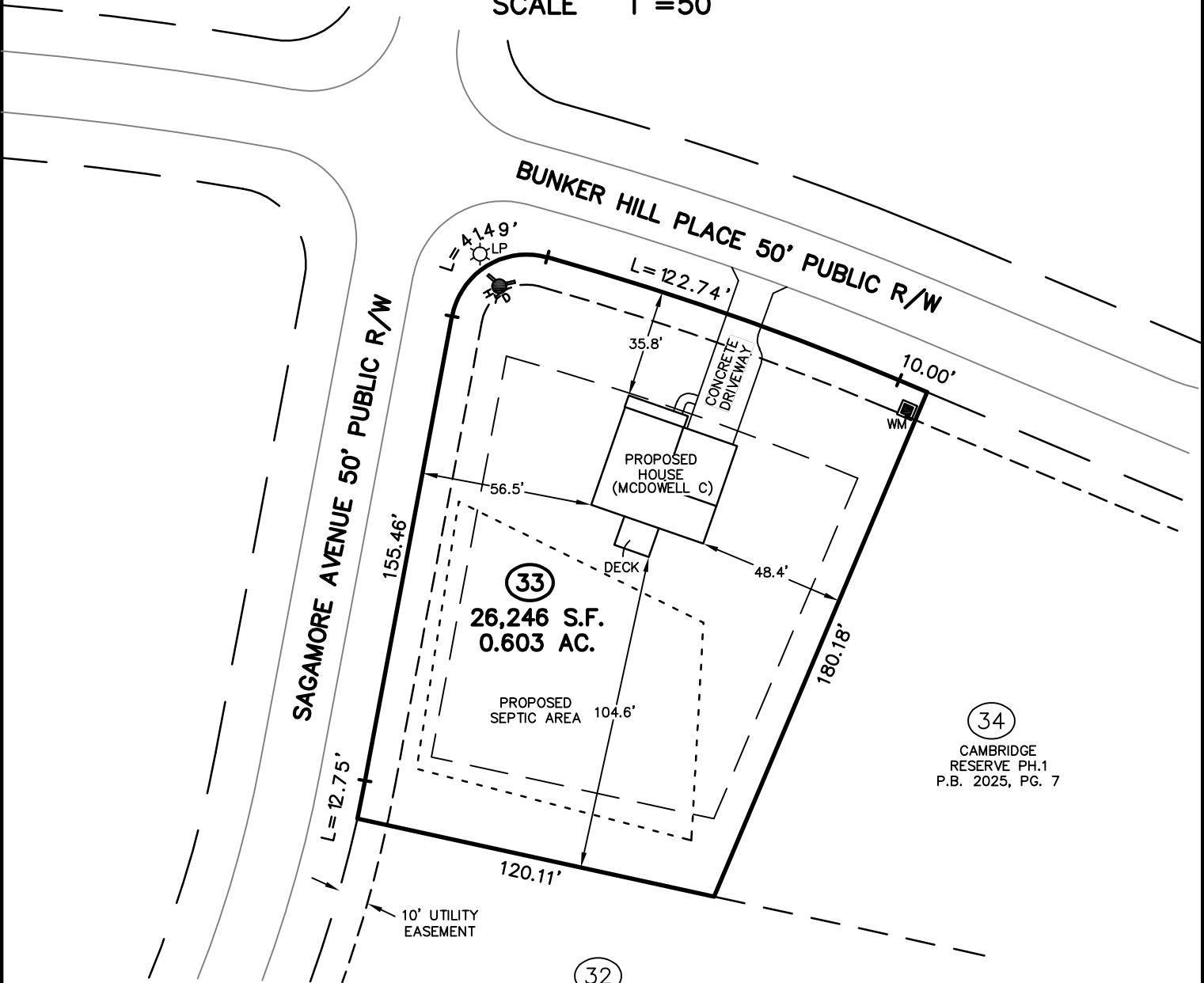
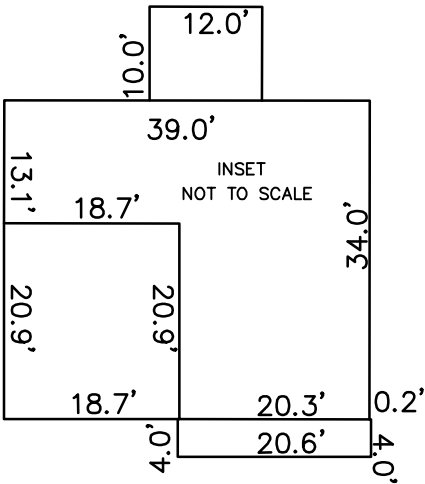
HARNETT COUNTY, NORTH CAROLINA

FEBRUARY 12, 2025

ZONED RA-30



SCALE 1"=50'



IMPERVIOUS SURFACE TABLE

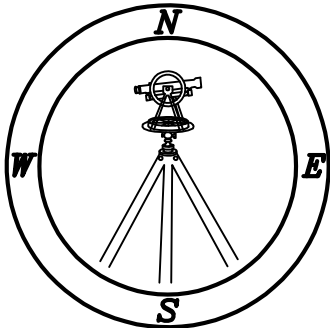
HOUSE	1,409 S.F.
DECK	120 S.F.
DRIVEWAY	610 S.F.
SIDEWALKS	31 S.F.
MISC/UTILITIES	9 S.F.
TOTAL IMPERVIOUS AREA	2,179 S.F.
TOTAL LOT AREA	26,246 S.F.
PERCENTAGE OF IMPERVIOUS AREA	8.30 %

TOTAL CONCRETE & LANDSCAPE	
CONCRETE	835 S.F.
LANDSCAPE	27,860 S.F.

CAMBRIDGE
RESERVE PH.1
P.B. 2025, PG. 7

CAMBRIDGE
RESERVE PH.1
P.B. 2025, PG. 7

THIS SURVEYOR DOES NOT
WARRANTY THE ACCURACY
OF ARCHITECTURAL DIMENSIONS.
THEY ARE TO BE VERIFIED BY
THE CONTRACTOR.



CMP

Professional Land Surveyors
C-1525

333 S. White Street
Post Office Box 1253
Wake Forest, N.C. 27588
(919)556-3148

NOTES:
-THIS PLAN DOES NOT REFLECT AN
ACTUAL SURVEY. IT IS A PRELIMINARY
PLAN AND SHOULD BE USED FOR ITS
INTENDED PURPOSE ONLY.
-NOT FOR RECORDATION, CONVEYANCES,
OR SALES.