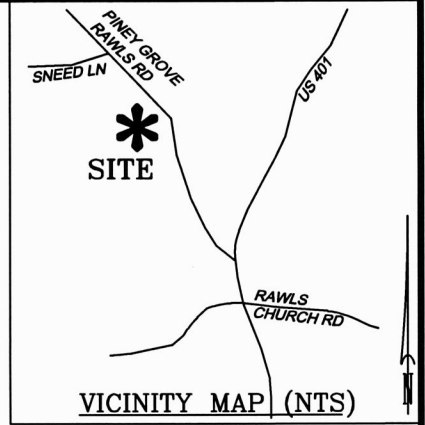
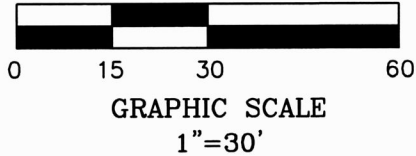
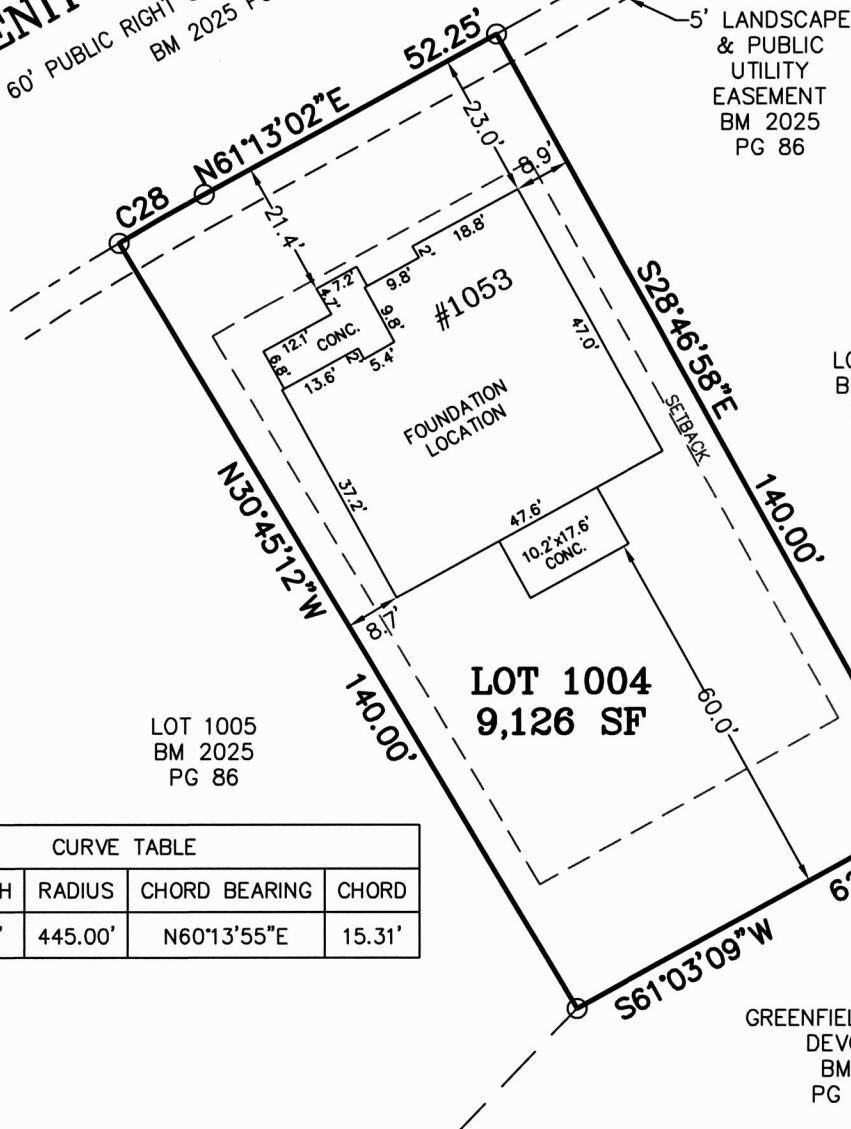


LEGEND

- MATHEMATICAL POINT
- SUBDIVISION CONTROL CORNER



SERENITY WALK PARKWAY  
60' PUBLIC RIGHT OF WAY & UTILITY ACCESS  
BM 2025 PG 86



LOT 1003  
BM 2025  
PG 86

LOT 1005  
BM 2025  
PG 86

GREENFIELD SERENITY  
DEVCO LLC  
BM 2021  
PG 21-26

CURVE TABLE				
CURVE	LENGTH	RADIUS	CHORD BEARING	CHORD
C28	15.31'	445.00'	N60°13'55"E	15.31'

NOTES:

- REFERENCE HARNETT CO. BM 2025, PG 83-86 FOR BOUNDARY INFORMATION, NORTH INDEX & TIE LINES TO SUBDIVISION CONTROL CORNERS.
- ZONED: RA-30, RA-40, & CONSERVATION.
- SETBACKS, PER BM 2025 PG 83:
  - 43' LOT WIDTH:
    - FRONT YARD-20', SIDE YARD-4' & 4' OR 0' & 8', REAR YARD-20', CORNER YARD-12'.
  - >43' LOT WIDTH:
    - FRONT YARD-20', SIDE YARD-5', REAR YARD-20', CORNER YARD-12'.
- PROPERTY IS NOT LOCATED WITHIN A SPECIAL FLOOD HAZARD AREA AS SCALED FROM THE NFIP FIRM No. 3720065500L (EFFECTIVE DATE: JULY 19, 2022).

FOUNDATION LOCATION  
LOT 1004

SERENITY SUBDIVISION, PHASE 3A  
HECTOR'S CREEK TOWNSHIP, HARNETT COUNTY, NC

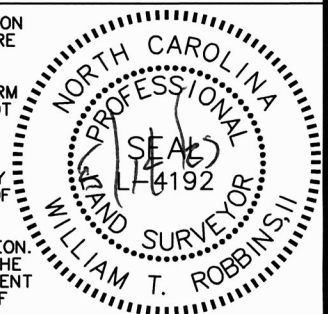
SURVEYED FOR  
**DAVID WEEKLEY HOMES**  
1901 N. HARRISON AVENUE, SUITE 200  
CARY, NC 27513



**MSS LAND CONSULTANTS, PC**  
"Committed to Total Quality Service"  
Firm License: C-2070  
EST. 1998

6118 St. Giles St  
(Suite E)  
Raleigh, NC 27612  
Phone (919) 510-4464  
Fax (919) 510-9102  
Email: hayesm@mssland.com

I HEREBY CERTIFY THAT THIS FOUNDATION IS CORRECT AS SHOWN AND THAT THERE ARE NO ENCROACHMENTS UNLESS OTHERWISE SHOWN. THIS IS NOT A SURVEY. THIS PLAT DOES NOT CONFORM TO GS-47-30 AS AMENDED AND IS NOT FOR RECORDATION. THE DIMENSIONS SHOWN HEREON FROM THE PROPERTY LINES TO THE FOUNDATION ARE NOT INTENDED TO MONUMENT THE PROPERTY LINES OR TO GUIDE IN THE ERECTION OF FENCES OR ANY OTHER IMPROVEMENT. THIS SURVEY WAS PREPARED FOR THE PARTIES AND PURPOSE INDICATED HEREON. ANY EXTENSION OF THE USE BEYOND THE PURPOSE AGREED TO BETWEEN THE CLIENT AND SURVEYOR EXCEEDS THE SCOPE OF ENGAGEMENT.



WILLIAM T. ROBBINS, II, PLS L-4192