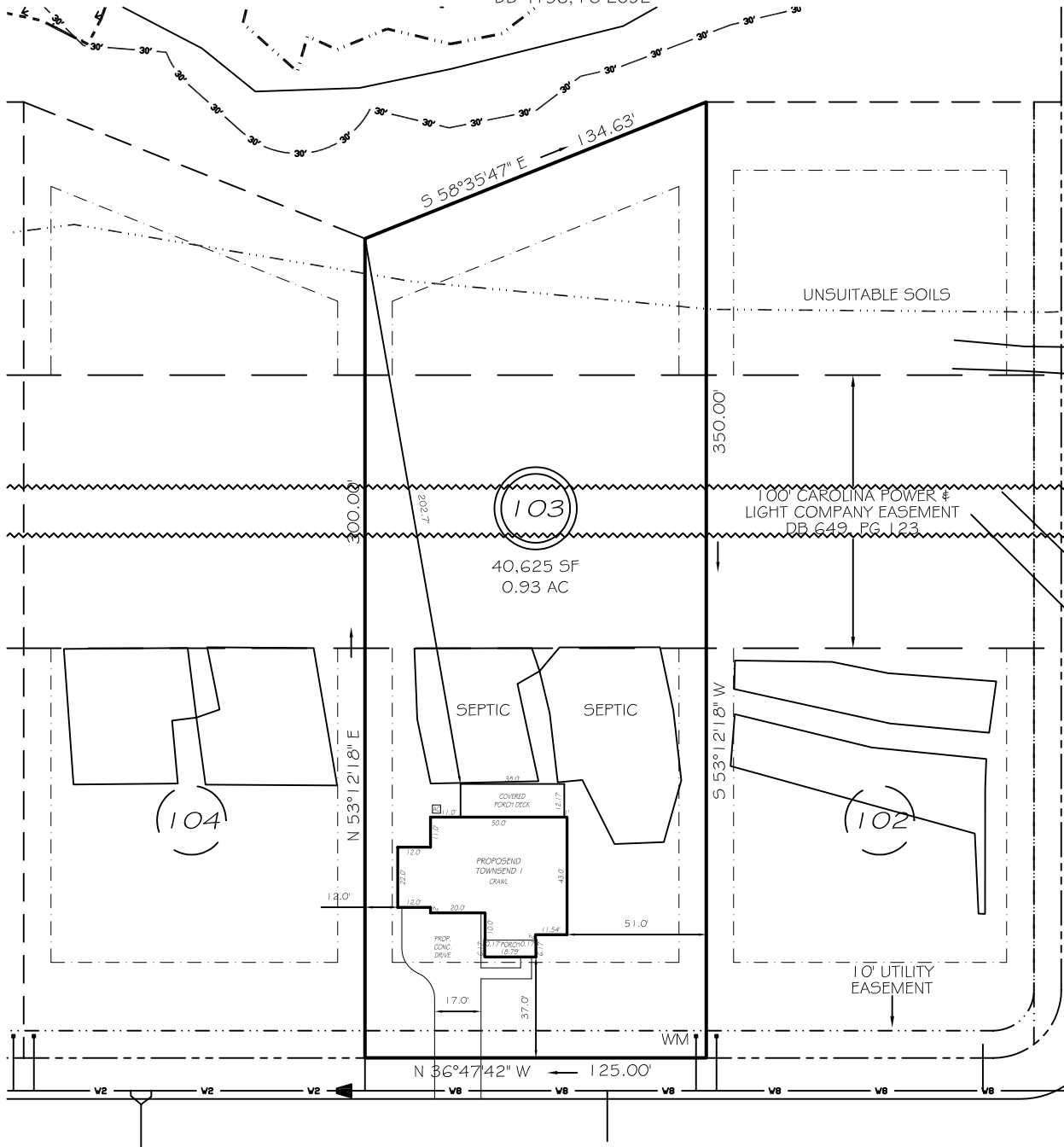


I, MICHAEL P. GRIFFIN, certify that under my direction and supervision this map was drawn from an actual field survey; that the error of closure of the survey as calculated by coordinates is 1: 10,000+; that the area shown hereon was calculated by coordinates. Dashed lines shown hereon were not surveyed.

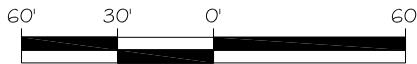
Witness my hand and seal this day of MONTH 2025.

CA7

N/F  
DRB GROUP NORTH CAROLINA, LLC  
TRACT 1, PARCEL B OF  
DB 4156, PG 2082  
PORTION OF  
DB 4156, PG 2092



FROST MEADOW WAY  
50' PUBLIC RW & UTILITY ACCESS



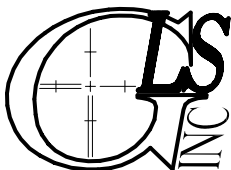
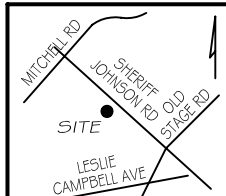
GRAPHIC SCALE  
1"=60'

LEGEND

PRELIMINARY  
NOT FOR RECORDATION,  
SALES OR CONVEYANCE

EIP	EXISTING IRON PIPE	FES	FLARED END SECTION
IPS	IRON PIPE SET	WM	WATER METER
R/W	RIGHT OF WAY	CO	CLEAN OUT
N/F	NOW OR FORMERLY	FH	FIRE HYDRANT
EIS	EXISTING IRON STAKE	CB	CATCH BASIN

ZONING: RA-30  
SETBACKS  
FRONT 35'  
REAR 25'  
SIDE 10'  
CORNER SIDE 20'



GRIFFIN LAND SURVEYING, INC.

P. O. BOX 148  
FUQUAY-VARINA, NC 27526  
(919) - 567 - 1963

FIRM LIC.# C-1345

PLOT PLAN  
FOR

DRB HOMES

BLAKE POND SUBDIVISION

LOT 103

44 FROST MEADOW WAY

LILLINGTON, N.C.

HARNETT COUNTY NEILL'S CREEK & GROVE TOWNSHIP

DRAWN BY KDF

DATE 3/18/25

CHECKED BY MPG

SCALE 1" = 60'