

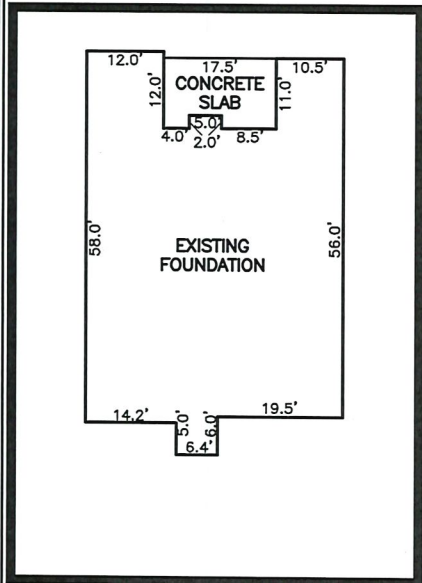
AS-BUILT IMPROVEMENTS FOR
NEW HOME, INC.
477 BEACON HILL ROAD
LOT 29, DUNCAN'S CREEK, PHASE 2
UPPER LITTLE CREEK TOWNSHIP, HARNETT COUNTY, NORTH CAROLINA

LEGEND

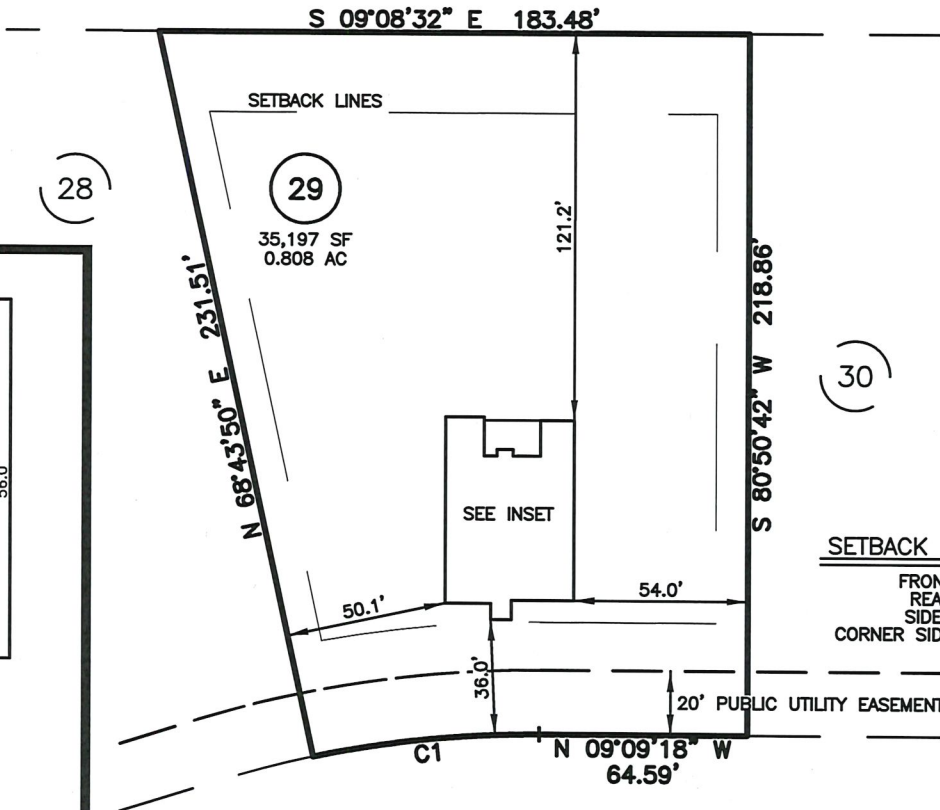
- △ AIR CONDITIONER
BC BACK OF CURB
BFP BACK FLOW PREVENTER
○ CLEANOUT
□ CURB INLET
DHS DRILL HOLE SET
ECM EXISTING CONCRETE MONUMENT
EDH EXISTING DRILL HOLE
EIS EXISTING IRON STAKE
EIP EXISTING IRON PIPE
EM ELECTRIC METER
EPK EXISTING PK NAIL
ES ELECTRIC STUB
▽ FLARED END SECTION
○ FIRE HYDRANT
○ FIBER OPTIC PEDESTAL
○ GAS METER
○ GUY
INV INVERT
IPS IRON PIPE SET
IRS IRON ROD SET
○ LIGHT POLE
MNS MAGNETIC NAIL SET
○ MANHOLE SANITARY SEWER
○ MANHOLE STORM SEWER
○ OVERHEAD WIRES
PKS PK NAIL SET
PNS POINT NOT SET
RRS RAIL ROAD SPIKE
○ TELEPHONE PEDESTAL
○ TRANSFORMER
○ CABLE TV PEDESTAL
○ UTILITY POLE
○ WATER METER
○ WATER VALVE
○ YARD INLET
○ FIELD MEASUREMENT
△ REVISION TRIANGLE

N/F
JOHNNY LYNWOOD HOLLAND
D.B. 2433, PG. 915
PLAT CABINET F SLIDE 586-A

B.M. 2025, PGS. 40-43



INSET SCALE: 1"=30"



SETBACK INFO

FRONT: 35'
REAR: 25'
SIDES: 10'
CORNER SIDE: 20'

BEACON HILL ROAD
50' PUBLIC R/W

CURVE	RADIUS	ARC	DELTA	CHORD BRG	CHORD DIS
C1	335.00'	70.83'	12°06'52"	N 15°12'44" W	70.70'

THIS AS-BUILT IS
FOR CODE COMPLIANCE.
NOT FOR SALES OR
CONVEYANCE

WAKE COUNTY, NORTH CAROLINA

I CERTIFY THAT THIS MAP WAS DRAWN UNDER MY
SUPERVISION FROM FIELDWORK DONE UNDER
MY SUPERVISION; THAT THE IMPROVEMENTS LIE
WHOLLY UPON THE LOT AND THAT THE PROPERTY
SHOWN IS AN EXISTING PARCEL OR PARCELS OF
LAND.

CHARLES R. PIRATZKY, P.L.S.
L-2813

DATE



REFERENCES:

B.M. 2025, PGS. 40-43



SCALE: 1" = 60

NOTES

1. THIS SURVEY SUBJECT TO ANY FACTS THAT MAY BE DISCLOSED BY A FULL AND ACCURATE TITLE SEARCH.
2. THIS MAP MAY NOT BE A CERTIFIED SURVEY AND HAS NOT BEEN REVIEWED BY A LOCAL GOVERNMENT AGENCY FOR COMPLIANCE WITH ANY APPLICABLE LAND DEVELOPMENT REGULATIONS AND HAS NOT BEEN REVIEWED FOR COMPLIANCE WITH RECORDING REQUIREMENTS FOR PLATS.

DATE: JUNE 04, 2025

Q:\FieldLoc\DNCK 27 29 FDN.txt

RWK, PA
ENGINEERING ~ SURVEYING
CORPORATE LICENSE: C-1771
101 W. MAIN ST., SUITE 202
GARNER, NC 27529
PHONE (919) 779-4854
FAX (919) 779-4056

C:\DUNCAN'S CREEK\DNCK29\DNCK 29.DWG