



ROOF & FLOOR
TRUSSES & BEAMS

Reilly Road Industrial Park
Fayetteville, N.C. 28309
Phone: (910) 864-8787
Fax: (910) 864-4444

Bearing reactions less than or equal to 3000# are deemed to comply with the prescriptive Code requirements. The contractor shall refer to the attached Tables (derived from the prescriptive Code requirements) to determine the minimum foundation size and number of wood studs required to support reactions greater than 3000# but not greater than 15000#. A registered design professional shall be retained to design the support system for any reaction that exceeds those specified in the attached Tables. A registered design professional shall be retained to design the support system for all reactions that exceed 15000#.

Signature
Neil Baggett

LOAD CHART FOR JACK STUDS

(BASED ON TABLES R502.5(1) & (b))

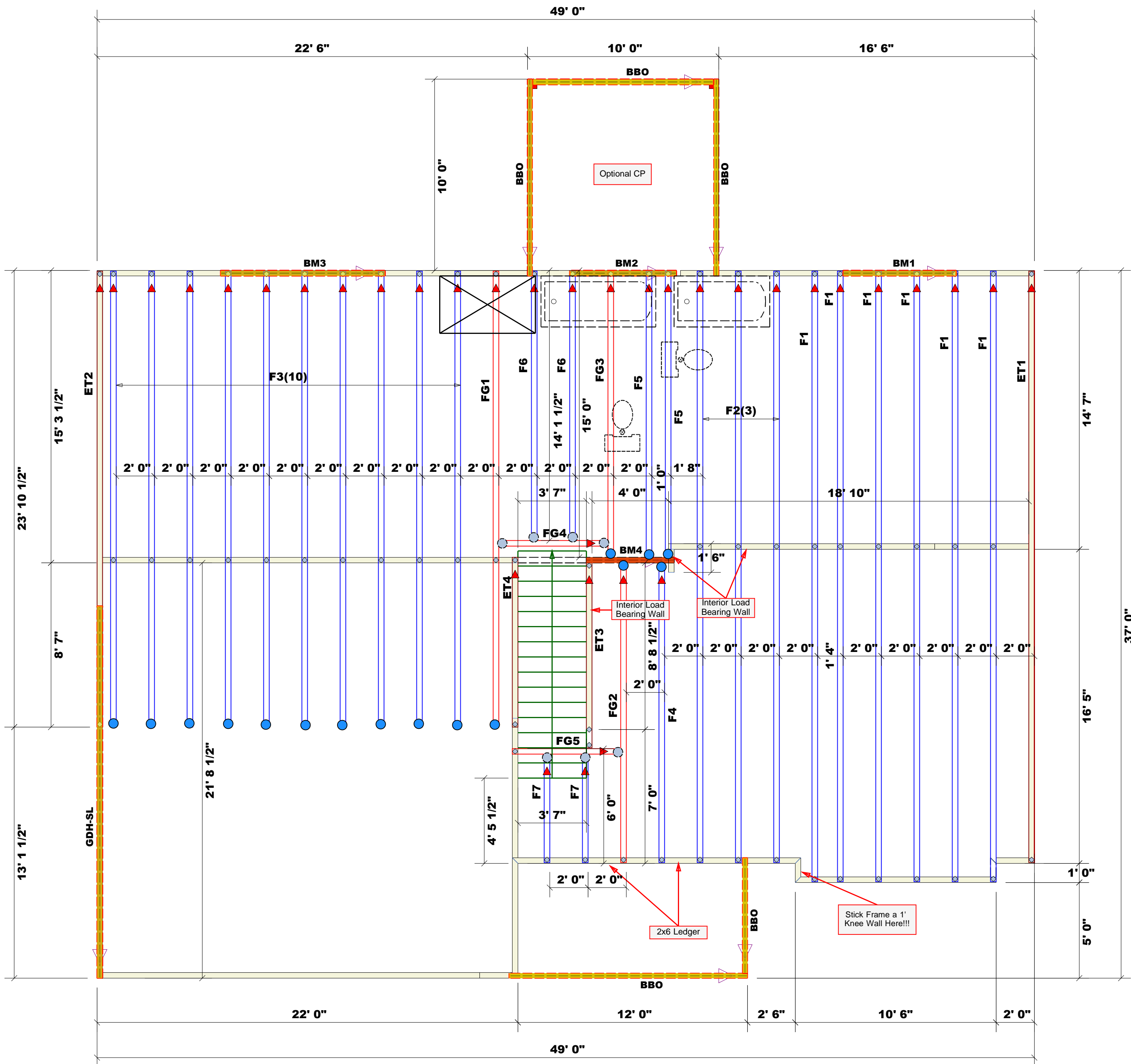
NUMBER OF JACK STUDS REQUIRED @ EA END OF
HEADER/GIRDER

| END REACTION (UP TO) | REQ'D STUDS FOR (1) FLY HEADER | END REACTION (UP TO) | REQ'D STUDS FOR (1) FLY HEADER | END REACTION (UP TO) | REQ'D STUDS FOR (1) FLY HEADER |
|-------------------------|-----------------------------------|-------------------------|-----------------------------------|-------------------------|-----------------------------------|
| 1700 | 1 | 2550 | 1 | 3400 | 1 |
| 3400 | 2 | 5100 | 2 | 6800 | 2 |
| 5100 | 3 | 7650 | 3 | 10200 | 3 |
| 6800 | 4 | 10200 | 4 | 13600 | 4 |
| 8500 | 5 | 12750 | 5 | 17000 | 5 |
| 10200 | 6 | 15300 | 6 | | |
| 11900 | 7 | | | | |
| 13600 | 8 | | | | |
| 15300 | 9 | | | | |

| | |
|-----------|-----------------------|
| COUNTY | Harnett |
| ADDRESS | Lot 15 Magnolia Hills |
| MODEL | Floor |
| DATE REV. | 4/1/2025 |
| DRAWN BY | Neil Baggett |
| SALESMAN | Neil Baggett |

| | |
|-----------|-------------------------|
| BUILDER | Precision Custom Homes |
| JOB NAME | Lot 15 Magnolia Hills |
| PLAN | Roark 2.0 w/CP & GDH-SL |
| SEAL DATE | 3/31/2025 |
| QUOTE # | Quote # |
| JOB # | J1024-5876 |

THIS IS A TRUSS PLACEMENT DIAGRAM ONLY.
These trusses are designed as individual building components to be incorporated into the building design at the specification of the building designer. See individual design sheets for each truss design identified on the placement drawing. The building designer is responsible for temporary and permanent bracing of the roof and floor system and for the overall structure. The design of the truss support structure including headers, beams, walls, and columns is the responsibility of the building designer. For general guidance regarding bracing, consult BCSI-B1 and BCSI-B3 provided with the truss delivery package or online @ sbcindustry.com



Plumbing Drop Notes
1. Plumbing drop locations shown are NOT exact.
2. Contractor to verify ALL plumbing drop locations prior to setting Floor Trusses.
3. Adjust spacing as needed not to exceed 24"oc.

Dimension Notes
1. All exterior wall to wall dimensions are to face of stud unless noted otherwise.
2. All interior wall dimensions are to face of stud unless noted otherwise.
3. All exterior wall to truss dimensions are to face of stud unless noted otherwise.

Roof Area = 2508.48 sq.ft.
Ridge Line = 84.93 ft.
Hip Line = 0 ft.
Horiz. OH = 139.64 ft.
Raked OH = 211.86 ft.
Decking = 86 sheets

All Walls Shown Are
Considered Load Bearing

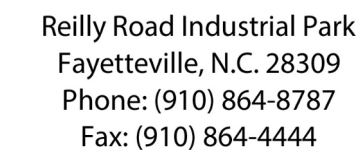
▲ = Indicates Left End of Truss
(Reference Engineered Truss Drawing)
Do Not Erect Trusses Backwards

1 Truss Placement Plan
Scale: 1/4"=1'

| Hatch Legend |
|--------------|
| Box Storage |
| Padded HVAC |
| Flush Beam |
| Drop Beam |

| ProdID | Length | Product | Piles | Net Qty | Fab Type |
|--------|--------|----------------------------|-------|---------|----------|
| GDH-SL | 20' 0" | 1.75 X 24 Kerto-S LVL 2.0E | 2 | 2 | FF |
| BM3 | 9' 0" | 1-3/4"x 9-1/4" LVL Kerto-S | 2 | 2 | FF |
| BM1 | 6' 0" | 1-3/4"x 9-1/4" LVL Kerto-S | 2 | 2 | FF |
| BM2 | 6' 0" | 1-3/4"x 9-1/4" LVL Kerto-S | 2 | 2 | FF |
| BM4 | 5' 0" | 1-3/4"x 14" LVL Kerto-S | 2 | 2 | FF |

| Connector Information | | | | Nail Information | |
|-----------------------|---------|-------|-----|------------------|------------|
| Sym | Product | Manuf | Qty | Header | Truss |
| ● | HUS410 | USP | 16 | NA | 16d/3-1/2" |
| ● | MSH422 | USP | 7 | Varies | 10d/3" |



Bearing reactions less than or equal to 3000# are deemed to comply with the prescriptive Code requirements. The contractor shall refer to the attached Tables (derived from the prescriptive Code requirements) to determine the minimum foundation size and number of wood studs required to support reactions greater than 3000# but not greater than 15000#. A registered design professional shall be retained to design the support system for any reaction that exceeds those specified in the attached Tables. A registered design professional shall be retained to design the support system for all reactions that exceed 15000#.

Signature

Neil Baggett

LOAD CHART FOR JACK STUDS

(BASED ON TABLES R502 5(1) & (b))

NUMBER OF JACK STUDS REQUIRED @ EA END OF
HEADER/GIRDER

| END REACTION (OP 10) | | END REACTION (OP 15) | | END REACTION (OP 17) | |
|---------------------------------|---|---------------------------------|---|---------------------------------|---|
| REQ 0 STUDS FOR 12.1M TANKER | | REQ 0 STUDS FOR 13.1M TANKER | | REQ 0 STUDS FOR 13.1M TANKER | |
| 1700 | 1 | 2550 | 1 | 3400 | 1 |
| 3400 | 2 | 5100 | 2 | 6800 | 2 |
| 5100 | 3 | 7650 | 3 | 10200 | 3 |
| 6800 | 4 | 10200 | 4 | 13600 | 4 |
| 8500 | 5 | 12750 | 5 | 17000 | 5 |
| 10200 | 6 | 15300 | 6 | | |
| 11900 | 7 | | | | |
| 13600 | 8 | | | | |
| 15300 | 9 | | | | |

| Plumbing Drop Notes |
|---|
| 1. Plumbing drop locations shown are NOT exact |
| 2. Contractor to verify ALL plumbing drop locations prior to setting Floor Trusses. |
| 3. Adjust spacing as needed not to exceed 24"oc |





| Dimension Notes |
|--|
| 1. All exterior wall to wall dimensions are to face of stud unless noted otherwise |
| 2. All interior wall dimensions are to face of stud unless noted otherwise |
| 3. All exterior wall to truss dimensions are face of stud unless noted otherwise |

| | |
|------------|------------------|
| Roof Area | = 2600.27 sq.ft. |
| Ridge Line | = 86.93 ft. |
| Hip Line | = 0 ft. |
| Horiz. OH | = 143.64 ft. |
| Raked OH | = 214.82 ft. |
| Decking | = 89 sheets |




All Walls Shown Are
Considered Load Bearing

▲ = Indicates Left End of Truss
(Reference Engineered Truss Drawing)
Do Not Erect Trusses Backwards

1 Truss Placement Plan
Scale: 1/4"=1'

| Hatch Legend | |
|---|-------------|
|  | Box Storage |
|  | Padded HVAC |
|  | Flush Beam |
|  | Drop Beam |

| PlotID | Length | Products | | Plies | Net Qty | Fab Typ |
|--------|--------|-----------------------|---------|-------|---------|---------|
| | | Product | | | | |
| GDH-SL | 21' 0" | 1.75 X 24 Kerto-S LVL | 2.0E | 2 | 2 | FF |
| BM3 | 9' 0" | 1-3/4"X 9-1/4" LVL | Kerto-S | 2 | 2 | FF |
| BM1 | 6' 0" | 1-3/4"X 9-1/4" LVL | Kerto-S | 2 | 2 | FF |
| BM2 | 6' 0" | 1-3/4"X 9-1/4" LVL | Kerto-S | 2 | 2 | FF |
| BM5 | 6' 0" | 1-3/4"X 14" LVL | Kerto-S | 2 | 2 | FF |
| BM4 | 5' 0" | 1-3/4"X 14" LVL | Kerto-S | 2 | 2 | FF |

| Connector Information | | | | | Nail Information | |
|---|---------|-------|-----|------------------|------------------|------------|
| Sym | Product | Manuf | Qty | Supported Member | Header | Truss |
|  | HUS410 | USP | 16 | Varies | 16d/3-1/2" | 16d/3-1/2" |
|  | MSH422 | USP | 7 | Varies | 10d/3" | 10d/3" |
|  | HUS26 | USP | 5 | Varies | 16d/3-1/2" | 16d/3-1/2" |

THIS IS A TRUSS PLACEMENT DIAGRAM ONLY. These trusses are designed as individual building components to be incorporated into the building design at the specification of the building designer. See individual design sheets for each truss design identified on the placement drawing. The building designer is responsible for temporary and permanent bracing of the roof and floor system and for the overall structure. The design of the truss support structure including headers, beams, walls, and columns is the responsibility of the building designer. For general guidance regarding bracing, consult BCSI-B1 and BCSI-B3 provided with the truss delivery package or online at sbindustry.com