

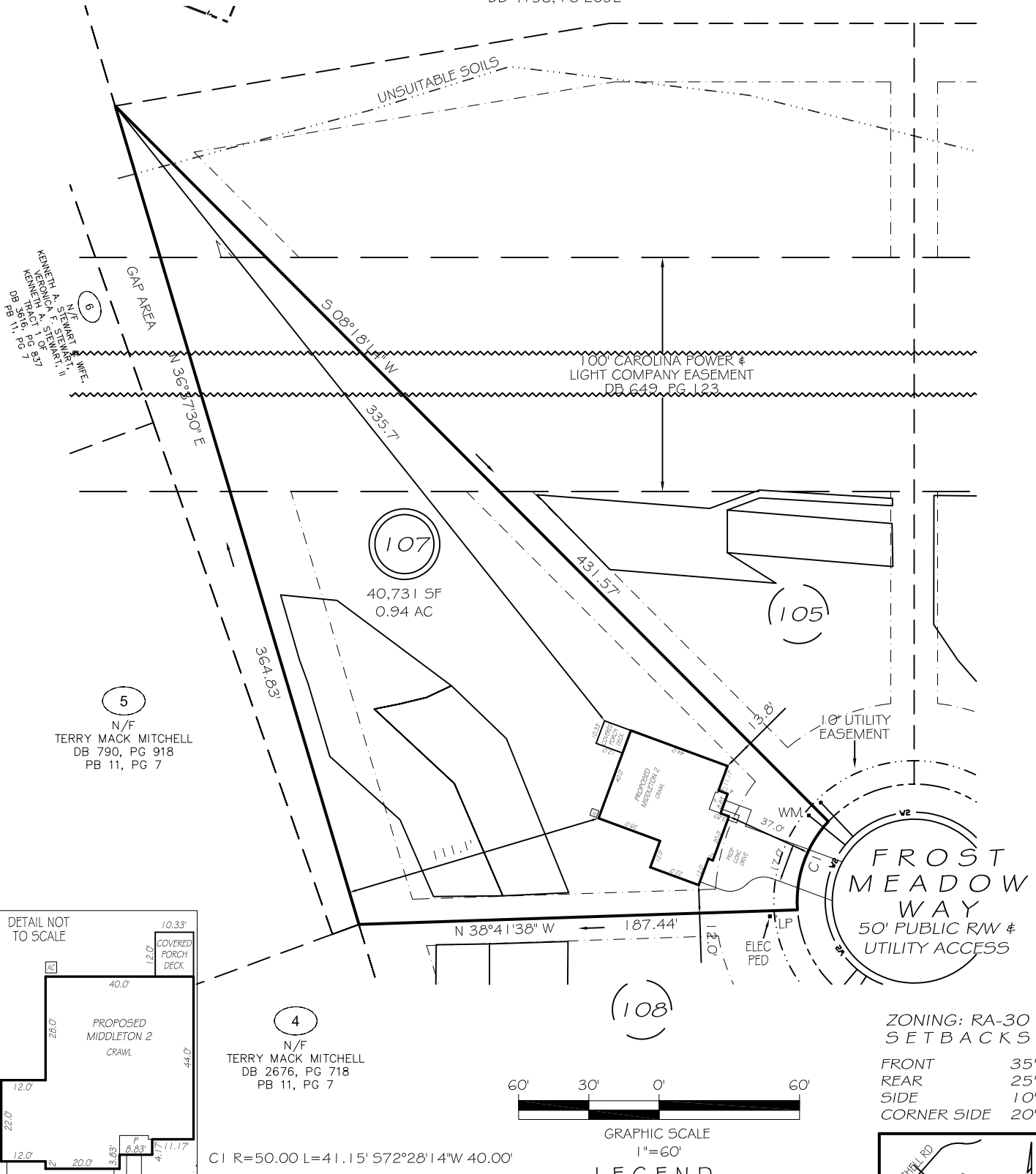
I, MICHAEL P. GRIFFIN, certify that under my direction and supervision this map was drawn from an actual field survey; that the error of closure of the survey as calculated by coordinates is 1: 10,000+; that the area shown hereon was calculated by coordinates. Dashed lines shown hereon were not surveyed.

Witness my hand and seal this day of MONTH 2025.

(CA7)

N/F
DRB GROUP NORTH CAROLINA, LLC
TRACT 1, PARCEL B OF
DB 4156, PG 2082
PORTION OF
DB 4156, PG 2092

BK 2023 PG 381
HARNETT CO. REGISTRY

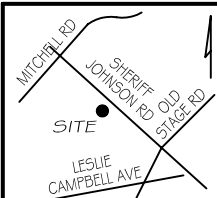


ZONING: RA-30
SETBACKS

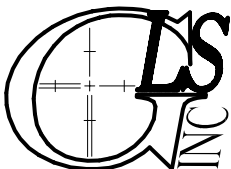
FRONT 35'
REAR 25'
SIDE 10'
CORNER SIDE 20'

LEGEND

EIP	EXISTING IRON PIPE	FES	FLARED END SECTION
IPS	IRON PIPE SET	WM	WATER METER
RAW	RIGHT OF WAY	CO	CLEAN OUT
N/F	NOW OR FORMERLY	LP	LIGHT POLE
EIS	EXISTING IRON STAKE	CB	CATCH BASIN



PRELIMINARY
NOT FOR RECORDATION,
SALES OR CONVEYANCE



GRIFFIN LAND SURVEYING, INC.

P. O. BOX 148
FUQUAY-VARINA, NC 27526
(919) - 567 - 1963

FIRM LIC.# C-1345

PLOT PLAN
FOR

DRB HOMES

BLAKE POND SUBDIVISION

LOT 107

114 FROST MEADOW WAY

LILLINGTON, N.C.

HARNETT COUNTY NEILL'S CREEK & GROVE TOWNSHIP

DRAWN BY KDF

DATE 3/12/25

CHECKED BY MPG

SCALE 1" = 60'