

PRELIMINARY PLOT PLAN FOR

MUNGO HOMES

LOT 32, CAMBRIDGE SUBDIVISION

59 SAGAMORE AVENUE

REF: P.B. 2025, PG.7

NEILL’S CREEK TOWNSHIP

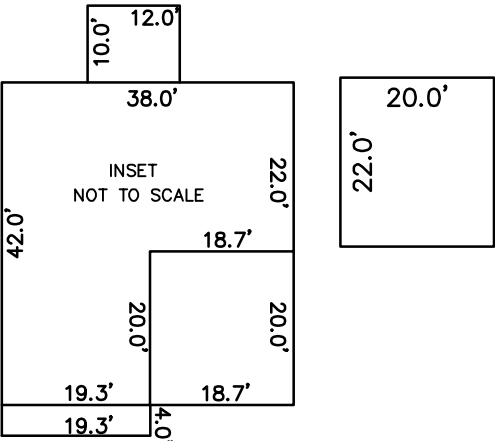
HARNETT COUNTY, NORTH CAROLINA

FEBRUARY 12, 2025

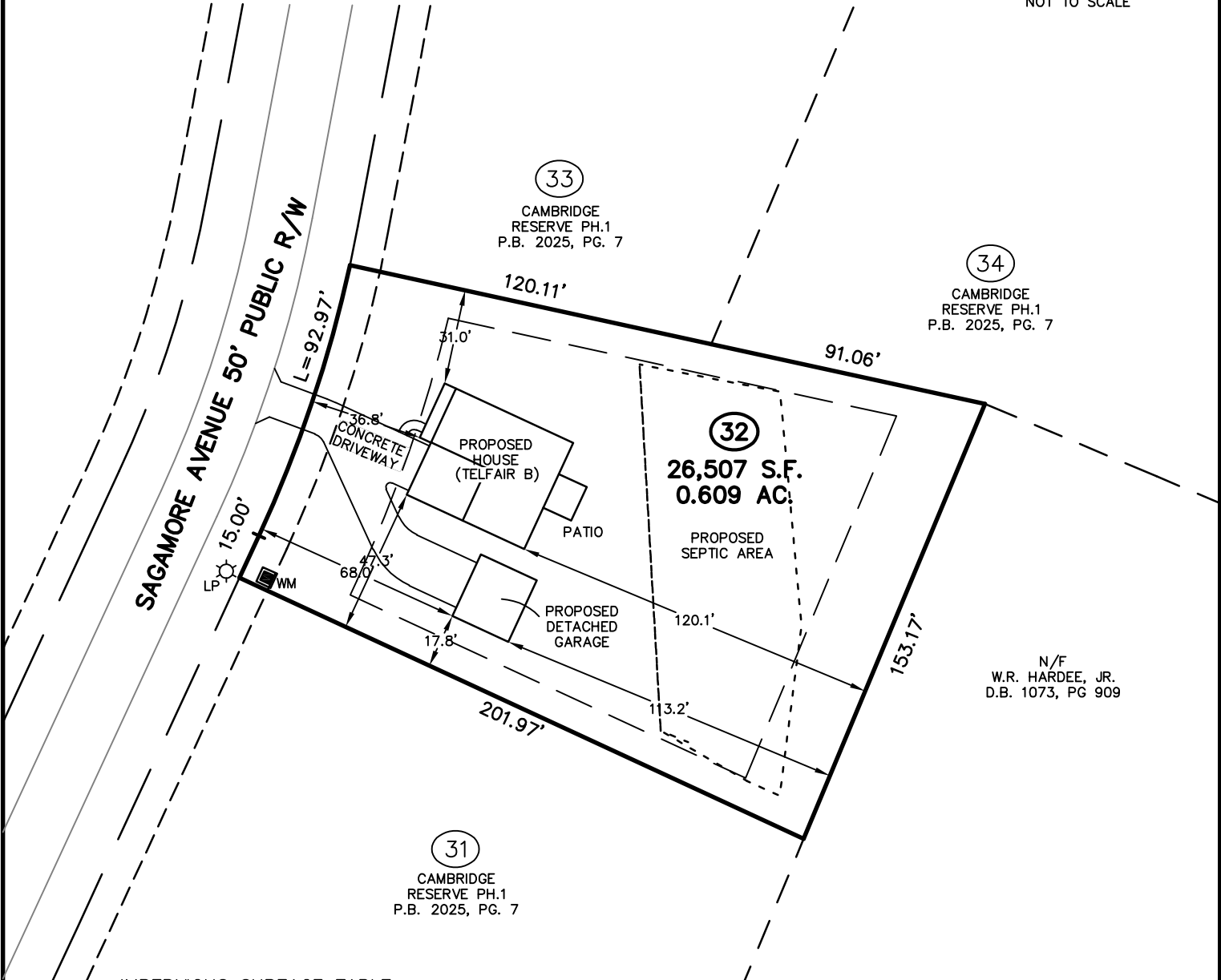
ZONED RA-30



SCALE 1"=50'



INSET  
NOT TO SCALE

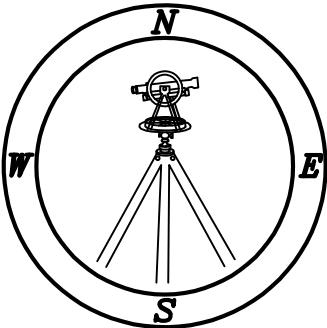


IMPERVIOUS SURFACE TABLE

|                               |             |
|-------------------------------|-------------|
| HOUSE                         | 1,673 S.F.  |
| DECK                          | 120 S.F.    |
| DRIVEWAY                      | 1,386 S.F.  |
| SIDEWALKS                     | 31 S.F.     |
| DETACHED GARAGE               | 440 S.F.    |
| MISC/UTILITIES                | 9 S.F.      |
| TOTAL IMPERVIOUS AREA         | 3,659 S.F.  |
| TOTAL LOT AREA                | 26,507 S.F. |
| PERCENTAGE OF IMPERVIOUS AREA | 13.80 %     |

|                               |             |
|-------------------------------|-------------|
| TOTAL CONCRETE<br>& LANDSCAPE |             |
| CONCRETE                      | 1,603 S.F.  |
| LANDSCAPE                     | 24,250 S.F. |

THIS SURVEYOR DOES NOT  
WARRANTY THE ACCURACY  
OF ARCHITECTURAL DIMENSIONS.  
THEY ARE TO BE VERIFIED BY  
THE CONTRACTOR.



**CMP**

Professional Land Surveyors  
C-1525

333 S. White Street  
Post Office Box 1253  
Wake Forest, N.C. 27588  
(919)556-3148

NOTES:  
-THIS PLAN DOES NOT REFLECT AN  
ACTUAL SURVEY. IT IS A PRELIMINARY  
PLAN AND SHOULD BE USED FOR ITS  
INTENDED PURPOSE ONLY.  
-NOT FOR RECORDATION, CONVEYANCES,  
OR SALES.