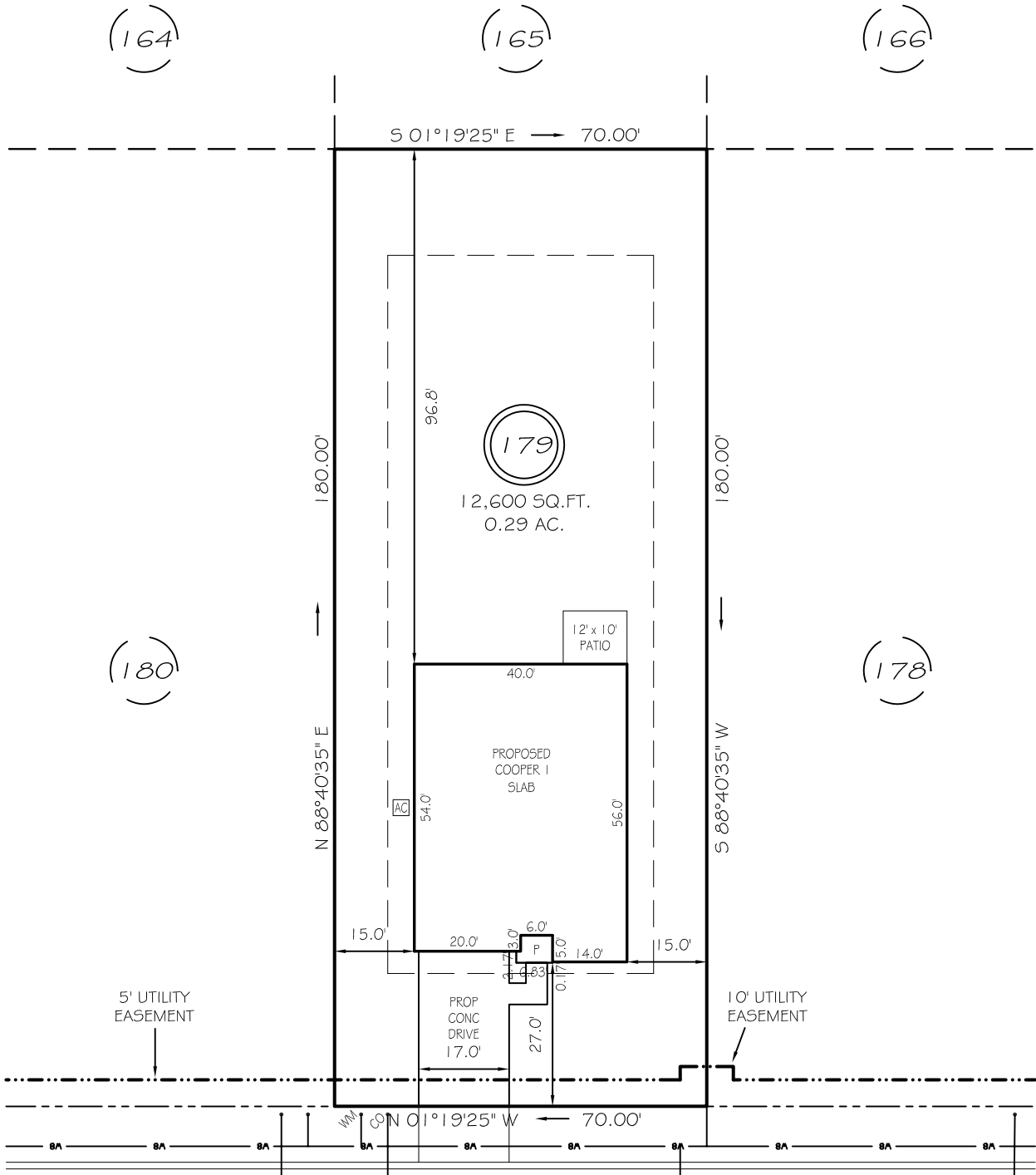


I, MICHAEL P. GRIFFIN, certify that under my direction and supervision this map was drawn from an actual field survey, that the error of closure of the survey as calculated by coordinates is 1: 10,000+; that the area shown hereon was calculated by coordinates. Dashed lines shown hereon were not surveyed.

Witness my hand and seal this day of MONTH 2025.

BK 2023 PGS 658-660  
HARNETT CO. REGISTRY



APPLESEED DRIVE

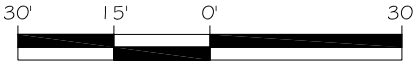
IMPERVIOUS AREAS

HOUSE	2203 SQ. FT.
DRIVE & WALKS	540 SQ. FT.
PATIO	120 SQ. FT.
A/C PAD	9 SQ. FT.
TOTAL	2872 SQ. FT.
ALLOWED	3800 SQ. FT.

50' PUBLIC RW & UTILITY ACCESS

SETBACKS

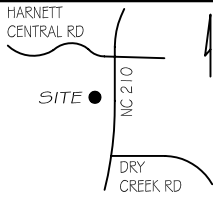
FRONT	25'
REAR	20'
SIDE	10'
CORNER SIDE	20'



GRAPHIC SCALE  
1"=30'

LEGEND

EIP	EXISTING IRON PIPE	FES	FLARED END SECTION
IPS	IRON PIPE SET	WM	WATER METER
R/W	RIGHT OF WAY	CO	CLEAN OUT
N/F	NOW OR FORMERLY	FH	FIRE HYDRANT
EIS	EXISTING IRON STAKE	CB	CATCH BASIN



PRELIMINARY

NOT FOR RECORDATION,  
SALES OR CONVEYANCE



GRIFFIN LAND SURVEYING, INC.

P. O. BOX 148  
FUQUAY-VARINA, NC 27526  
(919) - 567 - 1963

FIRM LIC.# C-1345

PLOT PLAN

FOR

DRB HOMES

THE FARM AT  
NEILLS CREEK

LOT 179

127 APPLESEED DRIVE

NORTH CAROLINA

HARNETT COUNTY NEILL'S CREEK TWSHP

DRAWN BY KDF

DATE 3/13/25

CHECKED BY MPG

SCALE 1" = 30'