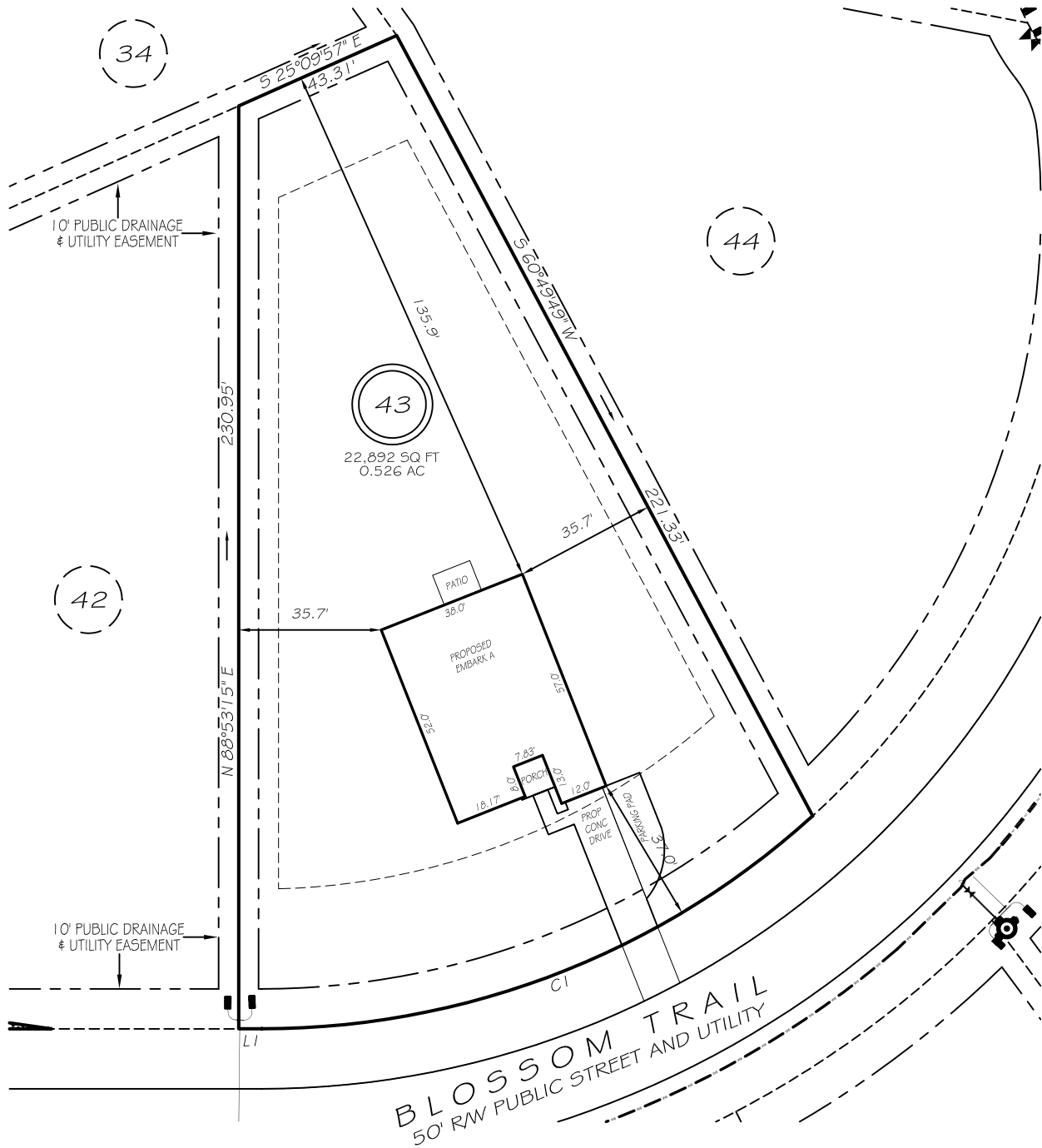


I, MICHAEL P. GRIFFIN, certify that under my direction and supervision this map was drawn from an actual field survey; that the error of closure of the survey as calculated by coordinates is 1: 10,000+; that the area shown hereon was calculated by coordinates. Dashed lines shown hereon were not surveyed.

Witness my hand and seal this day of MONTH 2025.

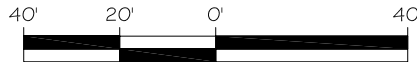
BK 2025 PGS 35-37
HARNETT CO. REGISTRY



IMPERVIOUS AREAS

HOUSE	2040 SQ. FT.
DRIVE & WALKS	686 SQ. FT.
PATIO	80 SQ. FT.
TOTAL	2806 SQ. FT.
ALLOWED	5000 SQ. FT.

LI N01°06'45"W 5.79
CI R=205.00' L=151.21' N22°14'36"W 147.81'



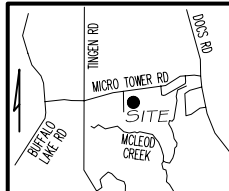
GRAPHIC SCALE
1"=40'

ZONING: RA-20R SETBACKS

FRONT	35'
REAR	25'
SIDE	10'
CORNER SIDE	20'

LEGEND

EIP	EXISTING IRON PIPE	FES	FLARED END SECTION
ISS	IRON STAKE SET	WM	WATER METER
R/W	RIGHT OF WAY	CO	CLEAN OUT
N/F	NOW OR FORMERLY	FH	FIRE HYDRANT
EIS	EXISTING IRON STAKE	LP	LIGHT POLE



P R E L I M I N A R Y
NOT FOR RECORDATION,
SALES OR CONVEYANCE



GRIFFIN LAND SURVEYING, INC.

P. O. BOX 148
FUQUAY-VARINA, NC 27526
(919) - 567 - 1963

FIRM LIC.# C-1345

PLOT PLAN FOR

DREAM FINDERS HOMES, LLC

MAGNOLIA RIDGE

LOT 43

BLOSSOM TRAIL

LILLINGTON, N.C.

HARNETT COUNTY BARBECUE TOWNSHIP

DRAWN BY **KDF**

DATE **2/28/25**

CHECKED BY **MPG**

SCALE **1" = 40'**