

I, MICHAEL P. GRIFFIN, certify that under my direction and supervision this map was drawn from an actual field survey; that the error of closure of the survey as calculated by coordinates is 1: 10,000+; that the area shown hereon was calculated by coordinates. Dashed lines shown hereon were not surveyed.

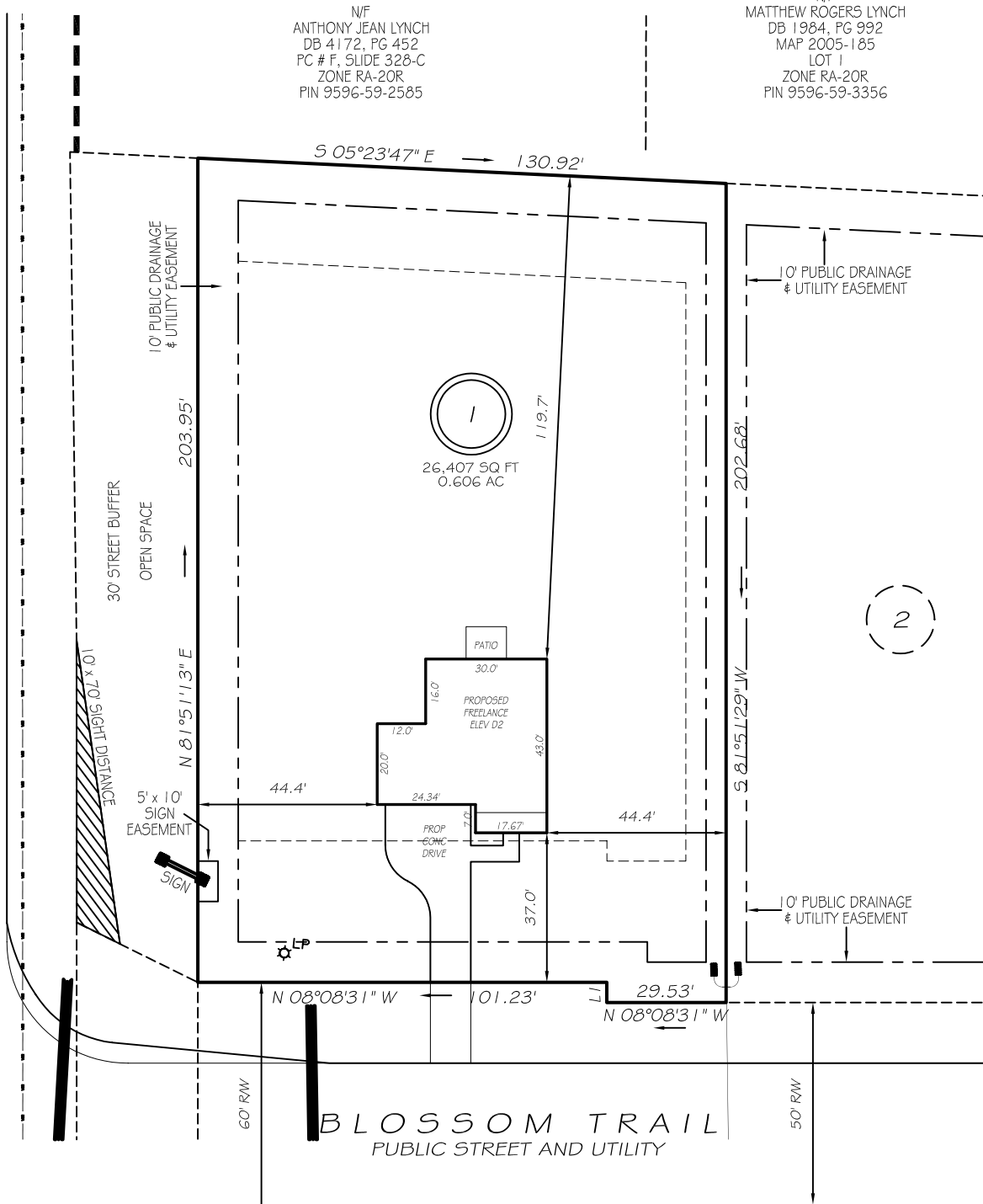
Witness my hand and seal this day of MONTH 2025.

BK 2025 PGS 35-37  
HARNETT CO. REGISTRY

MICRO TOWER ROAD  
SR 1141 PAVED ROAD 60' RW

N/F  
ANTHONY JEAN LYNCH  
DB 4172, PG 452  
PC # F, SLIDE 328-C  
ZONE RA-20R  
PIN 9596-59-2585

N/F  
MATTHEW ROGERS LYNCH  
DB 1984, PG 992  
MAP 2005-185  
LOT 1  
ZONE RA-20R  
PIN 9596-59-3356



IMPERVIOUS AREAS

HOUSE	1444 SQ. FT.
DRIVE & WALKS	713 SQ. FT.
PATIO	80 SQ. FT.
TOTAL	2237 SQ. FT.
ALLOWED	5000 SQ. FT.



GRAPHIC SCALE  
1"=40'

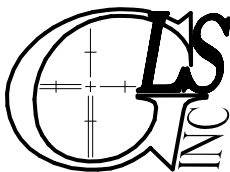
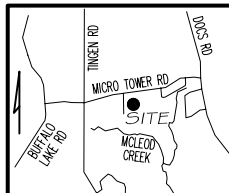
ZONING: RA-20R  
SETBACKS

FRONT	35'
REAR	25'
SIDE	10'
CORNER SIDE	20'

L1 N81°51'29"E 5.00'

PRELIMINARY  
NOT FOR RECORDATION,  
SALES OR CONVEYANCE

EIP	EXISTING IRON PIPE	FES	FLARED END SECTION
ISS	IRON STAKE SET	WM	WATER METER
R/W	RIGHT OF WAY	CO	CLEAN OUT
N/F	NOW OR FORMERLY	FH	FIRE HYDRANT
EIS	EXISTING IRON STAKE	LP	LIGHT POLE



GRIFFIN LAND SURVEYING, INC.

P. O. BOX 148  
FUQUAY-VARINA, NC 27526  
(919) - 567 - 1963

FIRM LIC.# C-1345

PLOT PLAN  
FOR

DREAM FINDERS HOMES, LLC

MAGNOLIA RIDGE

LOT 1

BLOSSOM TRAIL

LILLINGTON, N.C.

HARNETT COUNTY BARBECUE TOWNSHIP

DRAWN BY KDF

DATE 2/28/25

CHECKED BY MPG

SCALE 1" = 40'