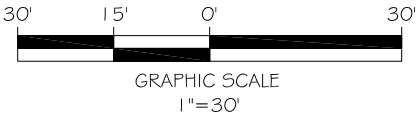


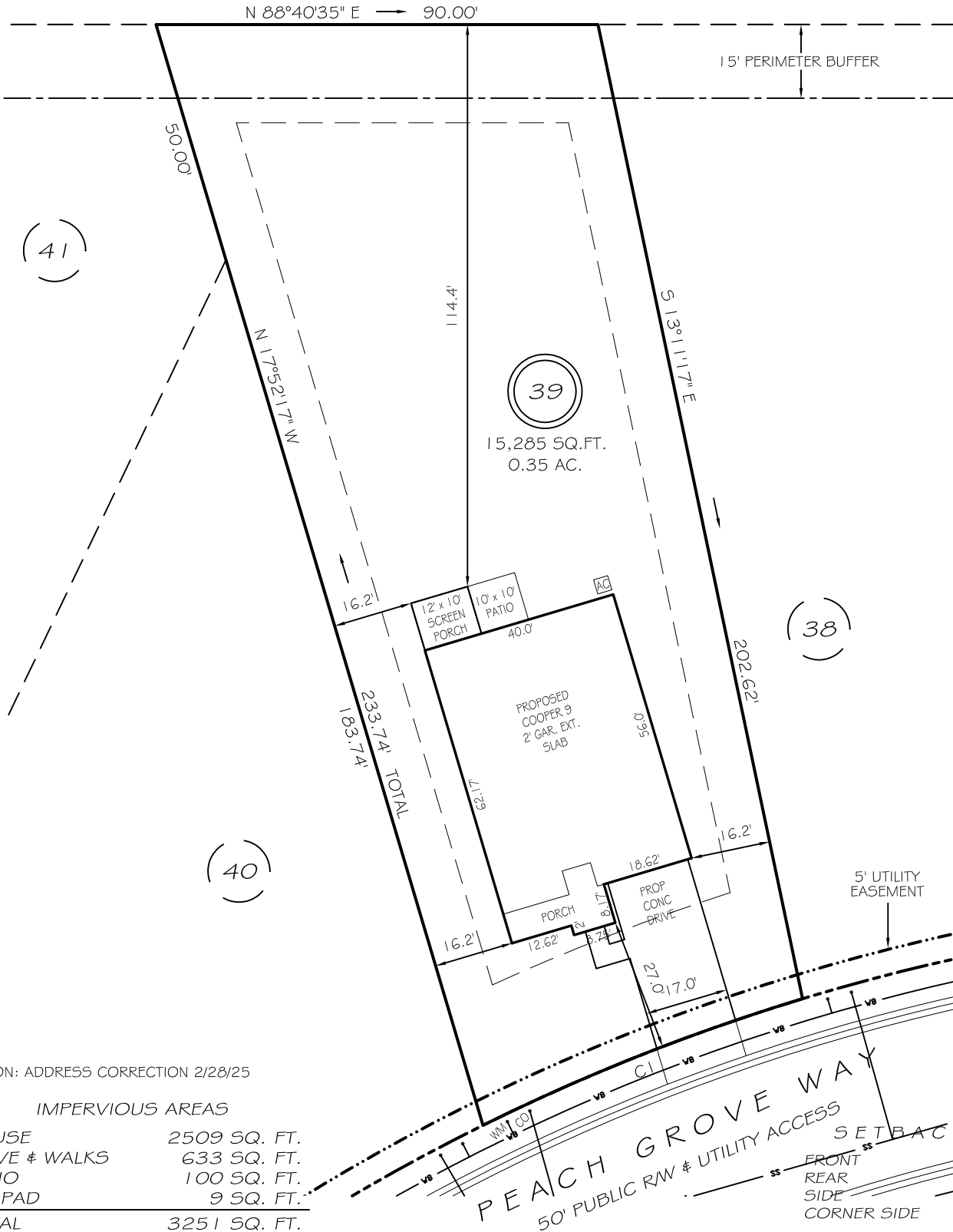
I, MICHAEL P. GRIFFIN, certify that under my direction and supervision this map was drawn from an actual field survey; that the error of closure of the survey as calculated by coordinates is 1: 10,000+; that the area shown hereon was calculated by coordinates. Dashed lines shown hereon were not surveyed.

Witness my hand and seal this day of MONTH 2025.

N/F  
HARNETT CENTRAL HOLDERS, LLC  
TRACT 4 OF  
DB 3734, PG 952  
PB 2019, PG 115



BK 2023 PGS 658-660  
HARNETT CO. REGISTRY



REVISION: ADDRESS CORRECTION 2/28/25

IMPERVIOUS AREAS

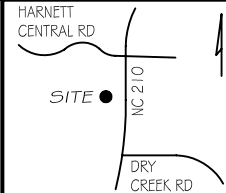
HOUSE	2509 SQ. FT.
DRIVE & WALKS	633 SQ. FT.
PATIO	100 SQ. FT.
A/C PAD	9 SQ. FT.
TOTAL	3251 SQ. FT.
ALLOWED	3800 SQ. FT.

CI R=425.00' L=70.08' S67°04'54"W 70.00'

**P R E L I M I N A R Y**  
NOT FOR RECORDATION,  
SALES OR CONVEYANCE

LEGEND

EIP	EXISTING IRON PIPE	FES	FLARED END SECTION
IPS	IRON PIPE SET	WM	WATER METER
R/W	RIGHT OF WAY	CO	CLEAN OUT
N/F	NOW OR FORMERLY	FH	FIRE HYDRANT
EIS	EXISTING IRON STAKE	CB	CATCH BASIN



GRIFFIN LAND SURVEYING, INC.

P. O. BOX 148  
FUQUAY-VARINA, NC 27526  
(919) - 567 - 1963

FIRM LIC.# C-1345

DRAWN BY **KDF**

DATE **2/21/25**

CHECKED BY **MPG**

SCALE **1" = 30'**

**PLOT PLAN**  
FOR  
**DRB HOMES**  
THE FARM AT  
NEILLS CREEK  
**LOT 39**

474 EACH GROVE WAY  
NORTH CAROLINA  
HARNETT COUNTY NEILL'S CREEK TWSHP