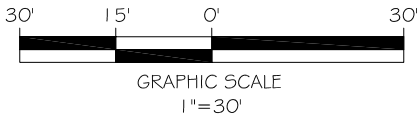
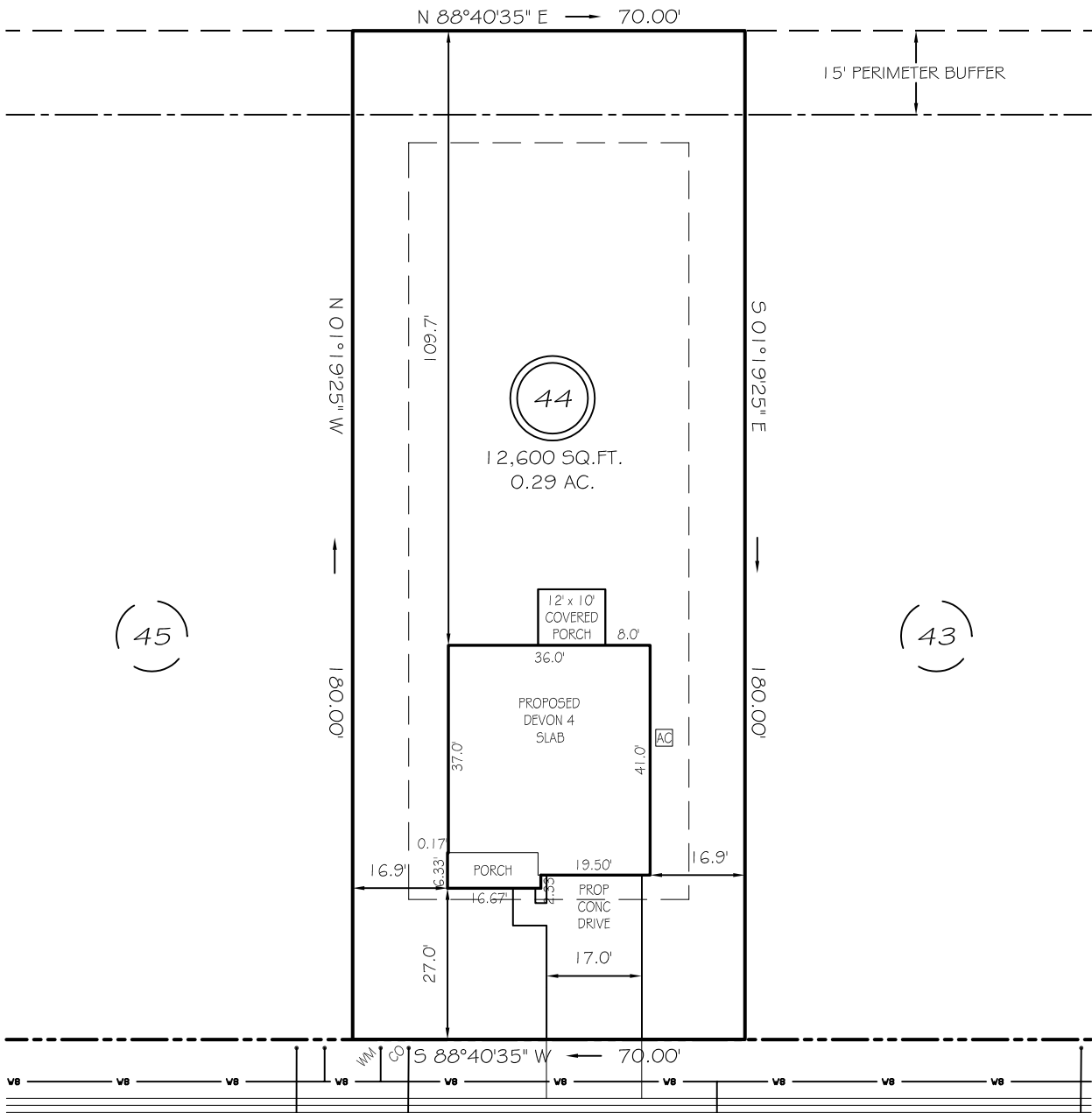


I, MICHAEL P. GRIFFIN, certify that under my direction and supervision this map was drawn from an actual field survey; that the error of closure of the survey as calculated by coordinates is 1: 10,000+; that the area shown hereon was calculated by coordinates. Dashed lines shown hereon were not surveyed.  
Witness my hand and seal this day of MONTH 2025.



N/F  
HARNETT CENTRAL HOLDERS, LLC  
TRACT 4 OF  
DB 3734, PG 952  
PB 2019, PG 115

BK 2023 PG5 658-660  
HARNETT CO. REGISTRY



WINDING CREEK DRIVE

50' PUBLIC RW & UTILITY ACCESS

IMPERVIOUS AREAS

HOUSE	1 636 SQ. FT.
DRIVE & WALKS	533 SQ. FT.
AVC PAD	9 SQ. FT.
TOTAL	2 178 SQ. FT.
ALLOWED	3800 SQ. FT.

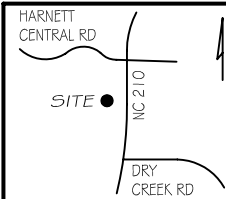
SETBACKS

FRONT	25'
REAR	20'
SIDE	10'
CORNER SIDE	20'

PRELIMINARY  
NOT FOR RECORDATION,  
SALES OR CONVEYANCE

LEGEND

EIP	EXISTING IRON PIPE	FES	FLARED END SECTION
IPS	IRON PIPE SET	WM	WATER METER
RAW	RIGHT OF WAY	CO	CLEAN OUT
N/F	NOW OR FORMERLY	FH	FIRE HYDRANT
EIS	EXISTING IRON STAKE	CB	CATCH BASIN



GRIFFIN LAND SURVEYING, INC.

P. O. BOX 148  
FUQUAY-VARINA, NC 27526  
(919) - 567 - 1963

FIRM LIC.# C-1345

PLOT PLAN

FOR

DRB HOMES

THE FARM AT  
NEILLS CREEK

LOT 44

516 WINDING CREEK DRIVE

NORTH CAROLINA

HARNETT COUNTY NEILL'S CREEK TWSHP

DRAWN BY KDF

DATE 2/20/25

CHECKED BY MPG

SCALE 1" = 30'