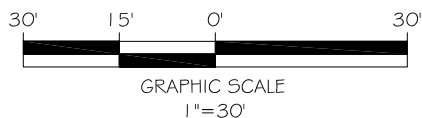
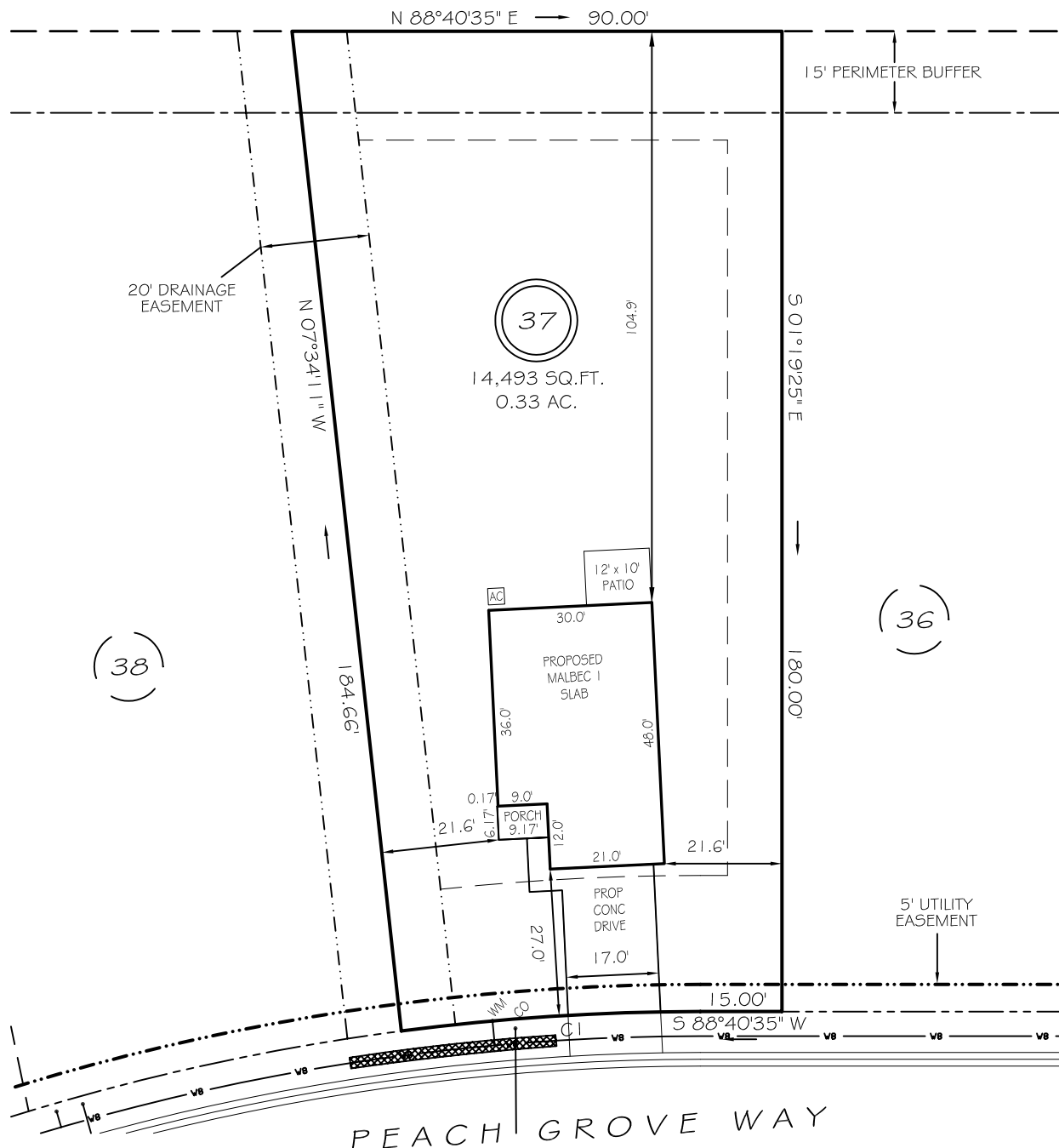


Witness my hand and seal this day of MONTH 2025.



N/F
HARNETT CENTRAL HOLDERS, LLC
TRACT 4 OF
DB 3734, PG 952
PB 2019, PG 115

BK 2023 PGS 658-660
HARNETT CO. REGISTRY

IMPERVIOUS AREAS

HOUSE	1 389 SQ. FT.
DRIVE & WALKS	507 SQ. FT.
A/C PAD	9 SQ. FT.
<hr/>	
TOTAL	1 905 SQ. FT.
ALLOWED	3800 SQ. FT.

CI R=425.00' L=55.06' S84°57'53"W 55.02'

50' PUBLIC R/W & UTILITY ACCESS

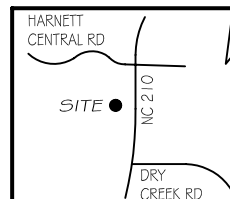
SETBACKS

FRONT	25'
REAR	20'
SIDE	10'
CORNER SIDE	20'

P R E L I M I N A R Y

NOT FOR RECORDATION,
SALES OR CONVEYANCE

EIP	EXISTING IRON PIPE	FES	FLARED END SECTION
IPS	IRON PIPE SET	WM	WATER METER
RAW	RIGHT OF WAY	CO	CLEAN OUT
N/F	NOW OR FORMERLY	FH	FIRE HYDRANT
EIS	EXISTING IRON STAKE	CB	CATCH BASIN



GRIFFIN LAND SURVEYING, INC.

P. O. BOX 148
FUQUAY-VARINA, NC 27526
(919) - 567-1963

FIRM LIC.# C-1345

PLOT PLAN

FOR

DRB HOMES

THE FARM AT NEILLS CREEK

LOT 37

450 PEACH GROVE WAY

NORTH CAROLINA

HARNETT COUNTY NEILL'S CREEK TWSHP

DRAWN BY **KDF**

DATE 3/4/25

CHECKED BY **MPG**

SCALE 1" = 30'