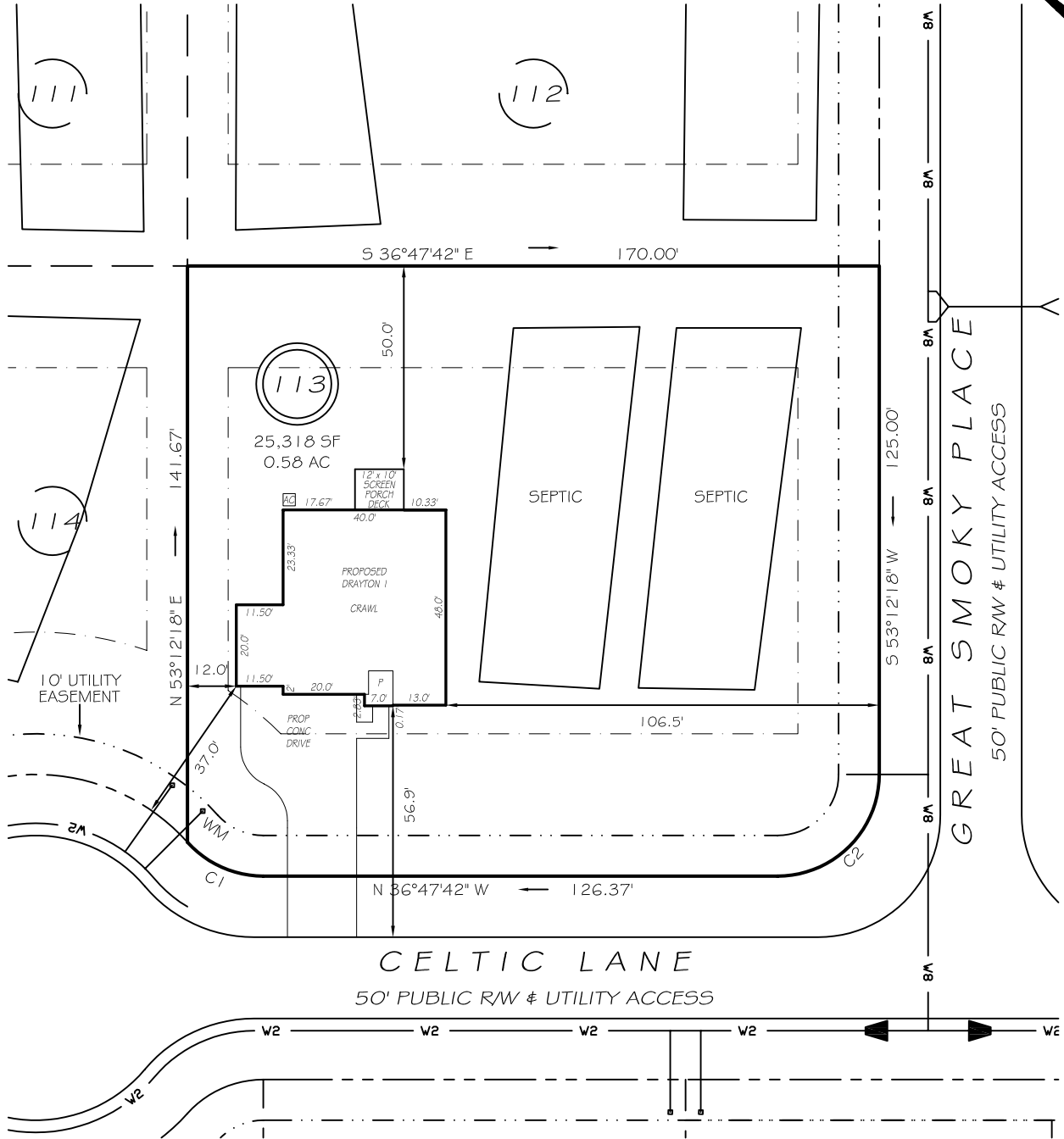


I, MICHAEL P. GRIFFIN, certify that under my direction and supervision this map was drawn from an actual field survey; that the error of closure of the survey as calculated by coordinates is 1: 10,000+; that the area shown hereon was calculated by coordinates. Dashed lines shown hereon were not surveyed.

Witness my hand and seal this day of MONTH 2025.

BK 2023 PG 381  
HARNETT CO. REGISTRY



C1 R=25.00' L=21.03' S12°42'01"E 20.41'  
C2 R=25.00' L=39.27' S81°47'42"E 35.36'



GRAPHIC SCALE  
1"=40'

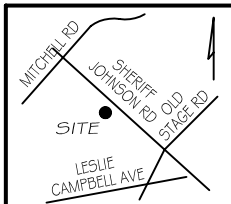
ZONING: RA-30  
SETBACKS

FRONT 35'  
REAR 25'  
SIDE 10'  
CORNER SIDE 20'

#### LEGEND

**P R E L I M I N A R Y**  
NOT FOR RECORDATION,  
SALES OR CONVEYANCE

EIP	EXISTING IRON PIPE	FES	FLARED END SECTION
IPS	IRON PIPE SET	WM	WATER METER
R/W	RIGHT OF WAY	CO	CLEAN OUT
N/F	NOW OR FORMERLY	FH	FIRE HYDRANT
EIS	EXISTING IRON STAKE	CB	CATCH BASIN



GRIFFIN LAND SURVEYING, INC.

P. O. BOX 148  
FUQUAY-VARINA, NC 27526  
(919) - 567-1963

FIRM LIC.# C-1345

**PLOT PLAN**  
FOR

**DRB HOMES**

**BLAKE POND SUBDIVISION**

**LOT 113**

33 CELTIC LANE

LILLINGTON, N.C.

HARNETT COUNTY NEILL'S CREEK & GROVE TOWNSHIP

DRAWN BY **KDF**

DATE **2/24/25**

CHECKED BY **MPG**

SCALE **1" = 40'**