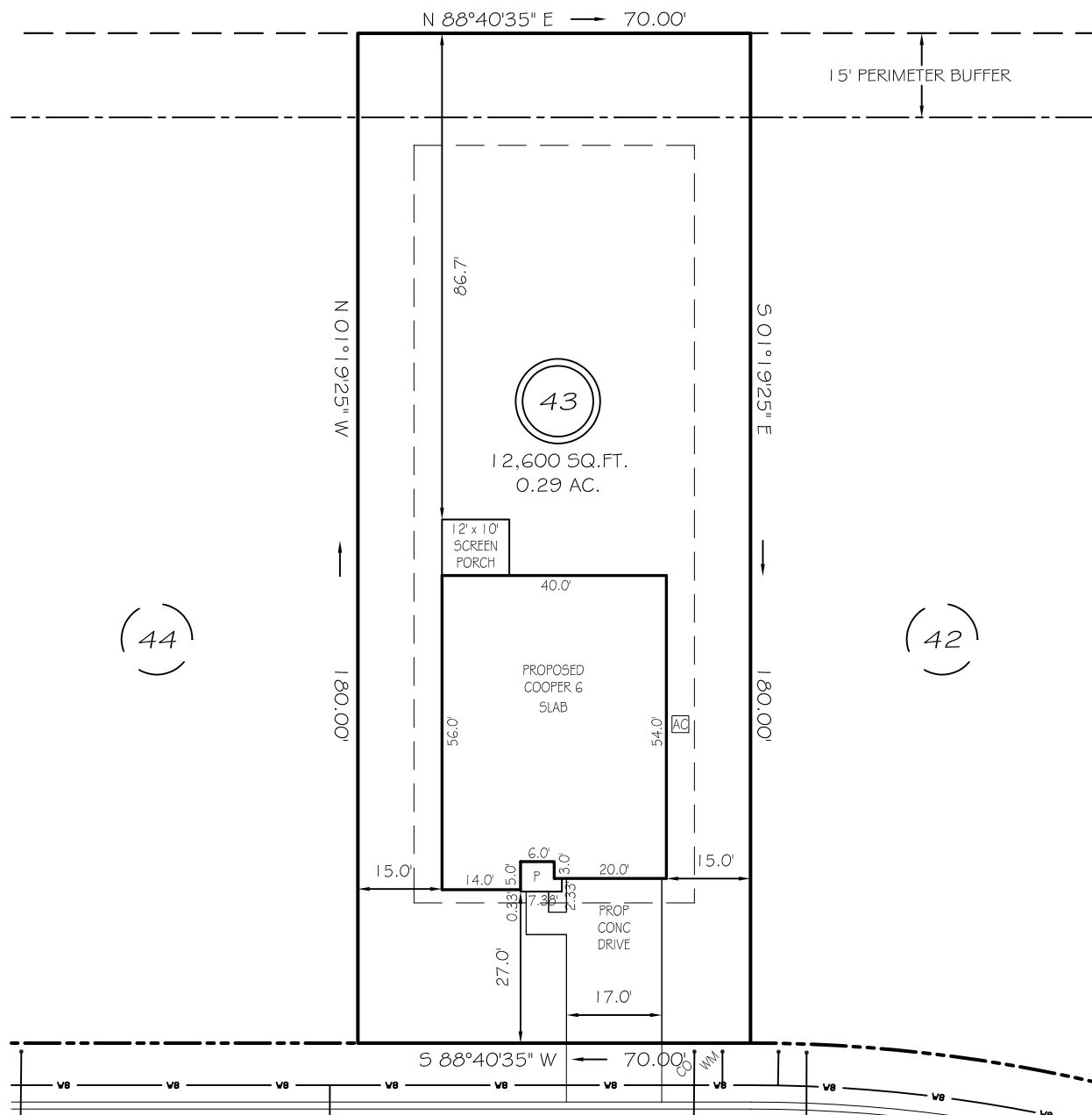


*Witness my hand and seal this day of MONTH 2025.*



N/F  
HARNETT CENTRAL HOLDERS, LLC  
TRACT 4 OF  
DB 3734, PG 952  
PB 2019, PG 115

BK 2023 PGS 658-660  
HARNETT CO. REGISTRY

WINDING CREEK DRIVE

50' PUBLIC RW & UTILITY ACCESS

IMPERVIOUS AREAS

HOUSE	2325 SQ. FT.
DRIVE & WALKS	542 SQ. FT.
A/C PAD	9 SQ. FT.
<hr/>	
TOTAL	2876 SQ. FT.
ALLOWED	3800 SQ. FT.

## SETBACKS

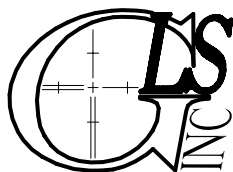
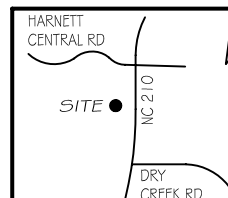
FRONT	25'
REAR	20'
SIDE	10'
CORNER SIDE	20'

P R E L I M I N A R Y

NOT FOR RECORDATION,  
SALES OR CONVEYANCE

## LEGEND

EIP	EXISTING IRON PIPE	FES	FLARED END SECTION
IPS	IRON PIPE SET	WM	WATER METER
RAW	RIGHT OF WAY	CO	CLEAN OUT
N/F	NOW OR FORMERLY	FH	FIRE HYDRANT
EIS	EXISTING IRON STAKE	CB	CATCH BASIN



GRIFFIN LAND SURVEYING, INC.

P. O. BOX 148  
FUQUAY-VARINA, NC 27526  
(919) - 567-1963

FIRM LIC.# C-1345

*PLOT PLAN*  
FOR  
***DRB HOMES***  
THE FARM AT  
NEILLS CREEK  
LOT 43

504 WINDING CREEK DRIVE

NORTH CAROLINA

HARNETT COUNTY      NEILL'S CREEK TWSHP

DRAWN BY **KDF**

DATE **2/21/25**

CHECKED BY **MPG**

SCALE 1" = 30'