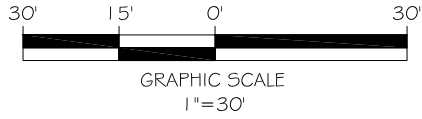
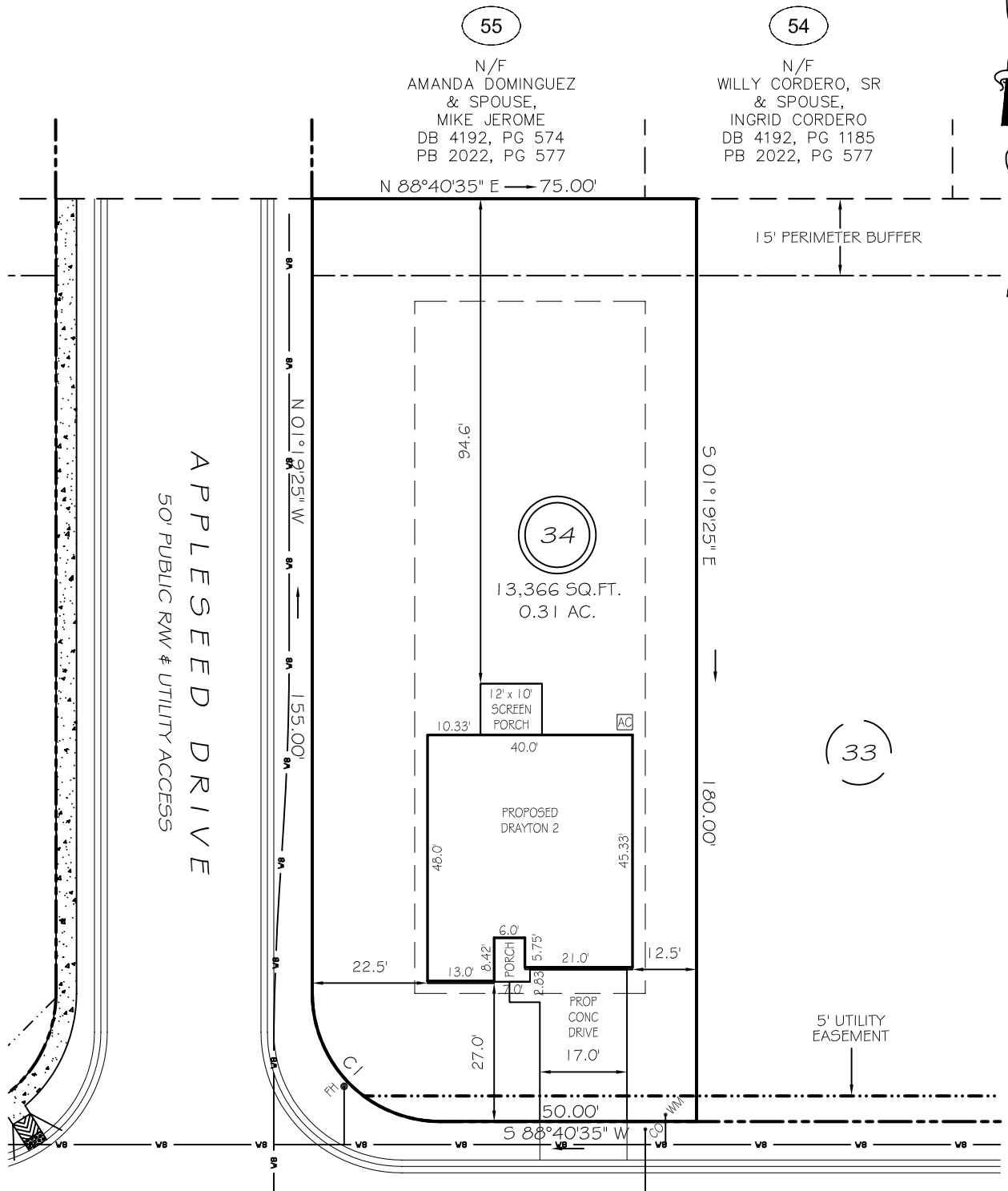


I, MICHAEL P. GRIFFIN, certify that under my direction and supervision this map was drawn from an actual field survey; that the error of closure of the survey as calculated by coordinates is 1: 10,000+; that the area shown hereon was calculated by coordinates. Dashed lines shown hereon were not surveyed.

Witness my hand and seal this day of MONTH 2025.



BK 2023 PGS 658-660  
HARNETT CO. REGISTRY



PEACH GROVE WAY

REVISION: ADDRESS CORRECTION 2/28/25  
IMPERVIOUS AREAS

50' PUBLIC RW & UTILITY ACCESS

SETBACKS

HOUSE	2002 SQ. FT.
DRIVE & WALKS	533 SQ. FT.
AVC PAD	9 SQ. FT.
<b>TOTAL</b>	<b>2544 SQ. FT.</b>
ALLOWED	3800 SQ. FT.

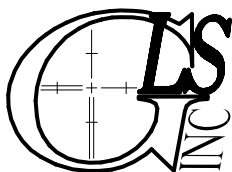
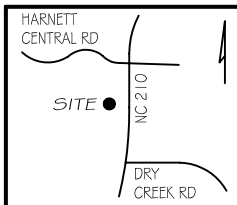
FRONT	25'
REAR	20'
SIDE	10'
CORNER SIDE	20'

CI R=25.00' L=39.27' S46°19'25"E 35.36'

LEGEND

**PRELIMINARY**  
NOT FOR RECORDATION,  
SALES OR CONVEYANCE

EIP	EXISTING IRON PIPE	FES	FLARED END SECTION
IPS	IRON PIPE SET	WM	WATER METER
R/W	RIGHT OF WAY	CO	CLEAN OUT
N/F	NOW OR FORMERLY	FH	FIRE HYDRANT
EIS	EXISTING IRON STAKE	CB	CATCH BASIN



GRIFFIN LAND SURVEYING, INC.

P. O. BOX 148  
FUQUAY-VARINA, NC 27526  
(919) - 567 - 1963

FIRM LIC.# C-1345

**PLOT PLAN**  
FOR  
**DRB HOMES**  
THE FARM AT  
NEILLS CREEK  
LOT 34

392 PEACH GROVE WAY

NORTH CAROLINA

HARNETT COUNTY NEILL'S CREEK TWSHP

DRAWN BY **KDF**

DATE **2/20/25**

CHECKED BY **MPG**

SCALE **1" = 30'**