

PRELIMINARY PLOT PLAN FOR

MUNGO HOMES

LOT 27, CAMBRIDGE SUBDIVISION

127 SAGAMORE AVENUE

REF: P.B. 2025, PG.7

NEILL'S CREEK TOWNSHIP

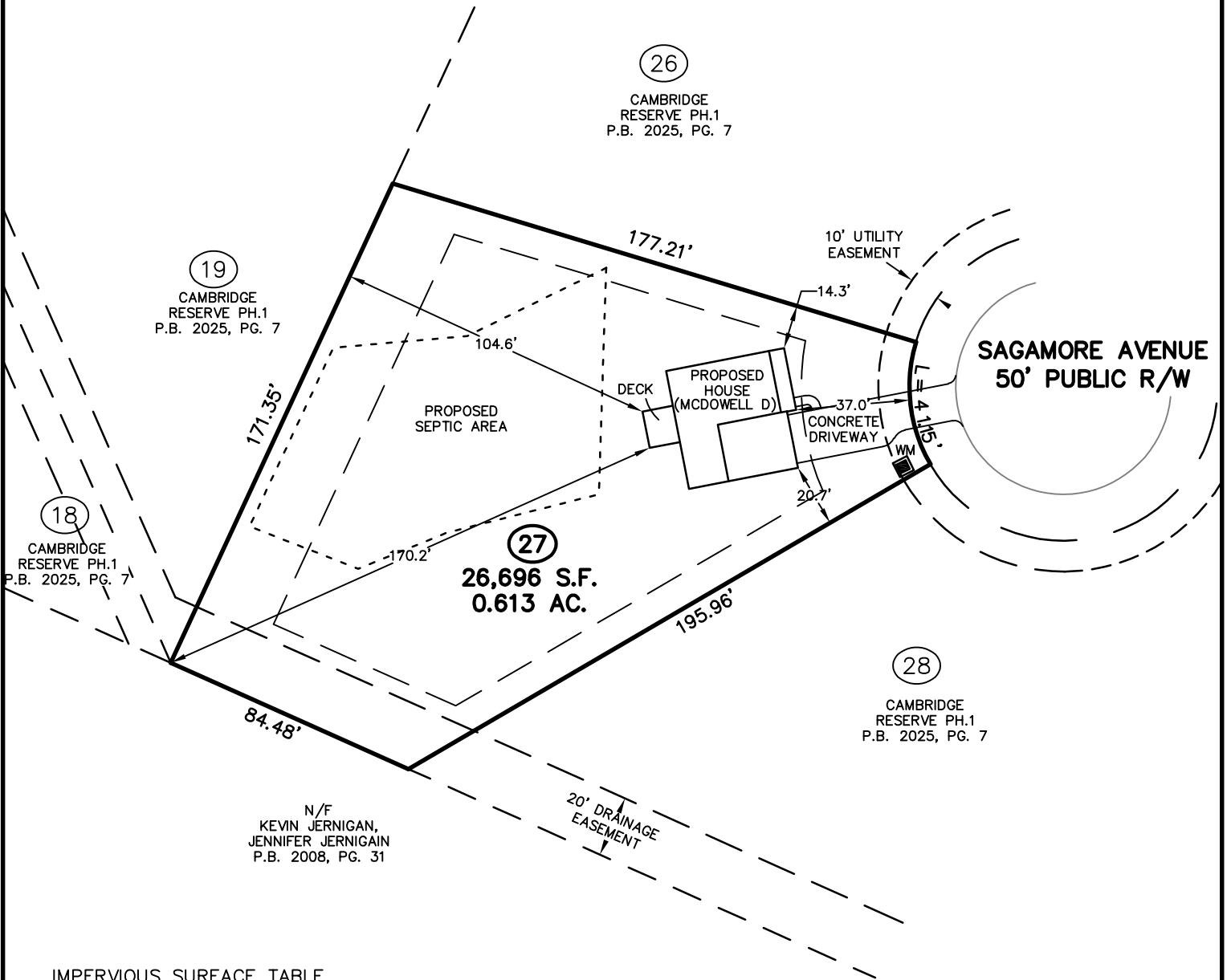
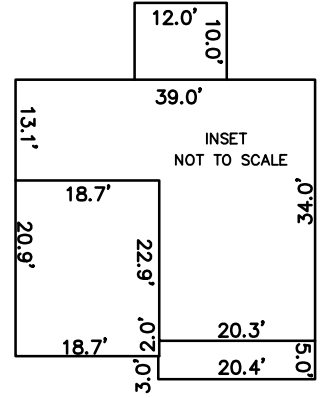
HARNETT COUNTY, NORTH CAROLINA

JANUARY 23, 2025

ZONED RA-30



SCALE 1"=50'

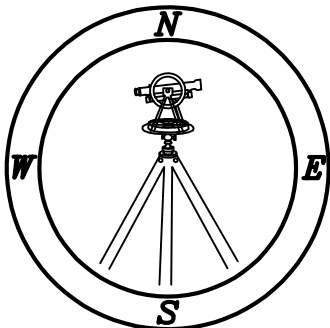


IMPERVIOUS SURFACE TABLE

HOUSE	1,465 S.F.
DECK	120 S.F.
DRIVEWAY	606 S.F.
SIDEWALKS	31 S.F.
MISC/UTILITIES	9 S.F.
TOTAL IMPERVIOUS AREA	2,231 S.F.
TOTAL LOT AREA	26,696 S.F.
PERCENTAGE OF IMPERVIOUS AREA	8.35 %

TOTAL CONCRETE & LANDSCAPE	
CONCRETE	820 S.F.
LANDSCAPE	24,807 S.F.

THIS SURVEYOR DOES NOT WARRANT THE ACCURACY OF ARCHITECTURAL DIMENSIONS. THEY ARE TO BE VERIFIED BY THE CONTRACTOR.



CMP

Professional Land Surveyors
C-1525

333 S. White Street
Post Office Box 1253
Wake Forest, N.C. 27588
(919)556-3148

NOTES:

-THIS PLAN DOES NOT REFLECT AN ACTUAL SURVEY. IT IS A PRELIMINARY PLAN AND SHOULD BE USED FOR ITS INTENDED PURPOSE ONLY.
-NOT FOR RECORDATION, CONVEYANCES, OR SALES.