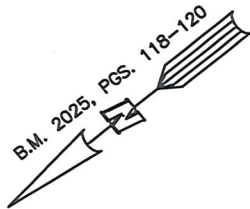


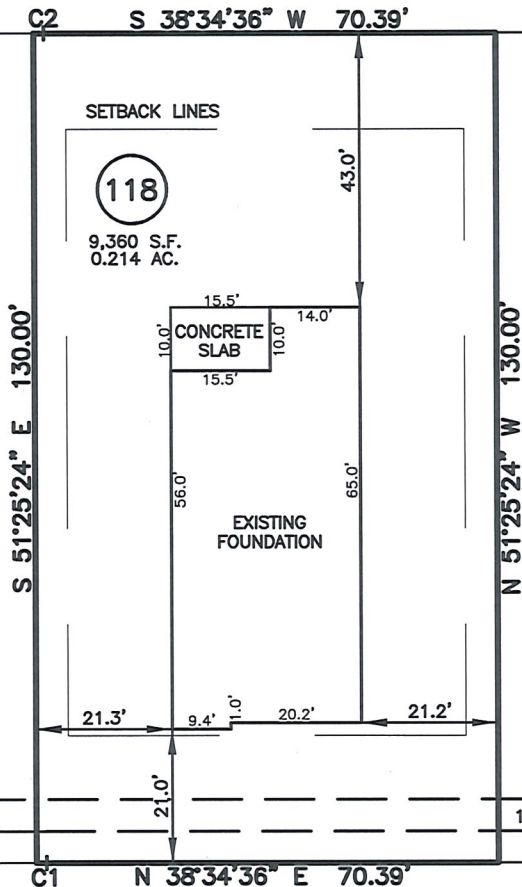
AS-BUILT IMPROVEMENTS FOR
MATTAMY HOMES
293 PROVIDENCE CREEK DRIVE
LOT 118, PROVIDENCE CREEK SUBDIVISION PHASE 3A
HECTORS CREEK AND BLACK RIVER TOWNSHIP, HARNETT COUNTY, NORTH CAROLINA



OPEN SPACE #2

LEGEND

- AIR CONDITIONER
- BACK OF CURB
- BACK FLOW PREVENTER
- CLEANOUT
- CURB INLET
- DRILL HOLE SET
- EXISTING CONCRETE MONUMENT
- EXISTING DRILL HOLE
- EXISTING IRON STAKE
- EXISTING IRON PIPE
- ELECTRIC METER
- EXISTING PK NAIL
- ELECTRIC STUB
- FLARED END SECTION
- FIRE HYDRANT
- FIBER OPTIC PEDESTAL
- GAS METER
- GUY
- INVERT
- IRON PIPE SET
- IRON ROD SET
- LIGHT POLE
- MAGNETIC NAIL SET
- MANHOLE SANITARY SEWER
- MANHOLE STORM SEWER
- OVERHEAD WIRES
- PK NAIL SET
- POINT NOT SET
- RAIL ROAD SPIKE
- TELEPHONE PEDESTAL
- TRANSFORMER
- CABLE TV PEDESTAL
- UTILITY POLE
- WATER METER
- WATER VALVE
- YARD INLET
- FIELD MEASUREMENT



PROVIDENCE CREEK DRIVE
50' PUBLIC R/W & UTILITY EASEMENT

NUM	RADIUS	ARC	DELTA	CHORD BRG	CHORD
C1	125.00'	1.61'	0°44'19"	N 38°30'10" E	1.61'
C2	755.00'	1.61'	0°07'20"	S 38°30'56" W	1.61'

SETBACK INFO

FRONT: 20'
REAR: 15'
SIDES: 5'
CORNER SIDE: 15'

REFERENCES:

B.M. 2025, PGS. 118-120



SCALE: 1" = 30'

NOTES

1. PROPERTY LINES, BEARING & DISTANCES, EASEMENTS, LOT AREA DRAWN PER MICKIMIN CREED CAD FILE ENTITLED 2024-07-17 PC PHASE 3.DWG.

THIS AS-BUILT IS
FOR CODE COMPLIANCE.
NOT FOR SALES OR
CONVEYANCE

WAKE COUNTY, NORTH CAROLINA

I CERTIFY THAT THIS MAP WAS DRAWN UNDER MY
SUPERVISION FROM FIELDWORK DONE UNDER
MY SUPERVISION; THAT THE IMPROVEMENTS LIE
WHOLLY UPON THE LOT AND THAT THE PROPERTY
SHOWN IS AN EXISTING PARCEL OR PARCELS OF
LAND.

Charles R. Piratzky

CHARLES R. PIRATZKY, P.L.S.
L-2813

4-7-25

DATE



DATE: MARCH 27, 2025

Q:\FieldLoc\PCCK 114 115 116 118 123 FDN.txt

RWK, PA
ENGINEERING ~ SURVEYING
CORPORATE LICENSE: C-1771
101 W. MAIN ST., SUITE 202
GARNER, NC 27529
PHONE (919) 779-4854
FAX (919) 779-4056

Q:\Providence Creek\PCCK1187\PCCK 118.dwg