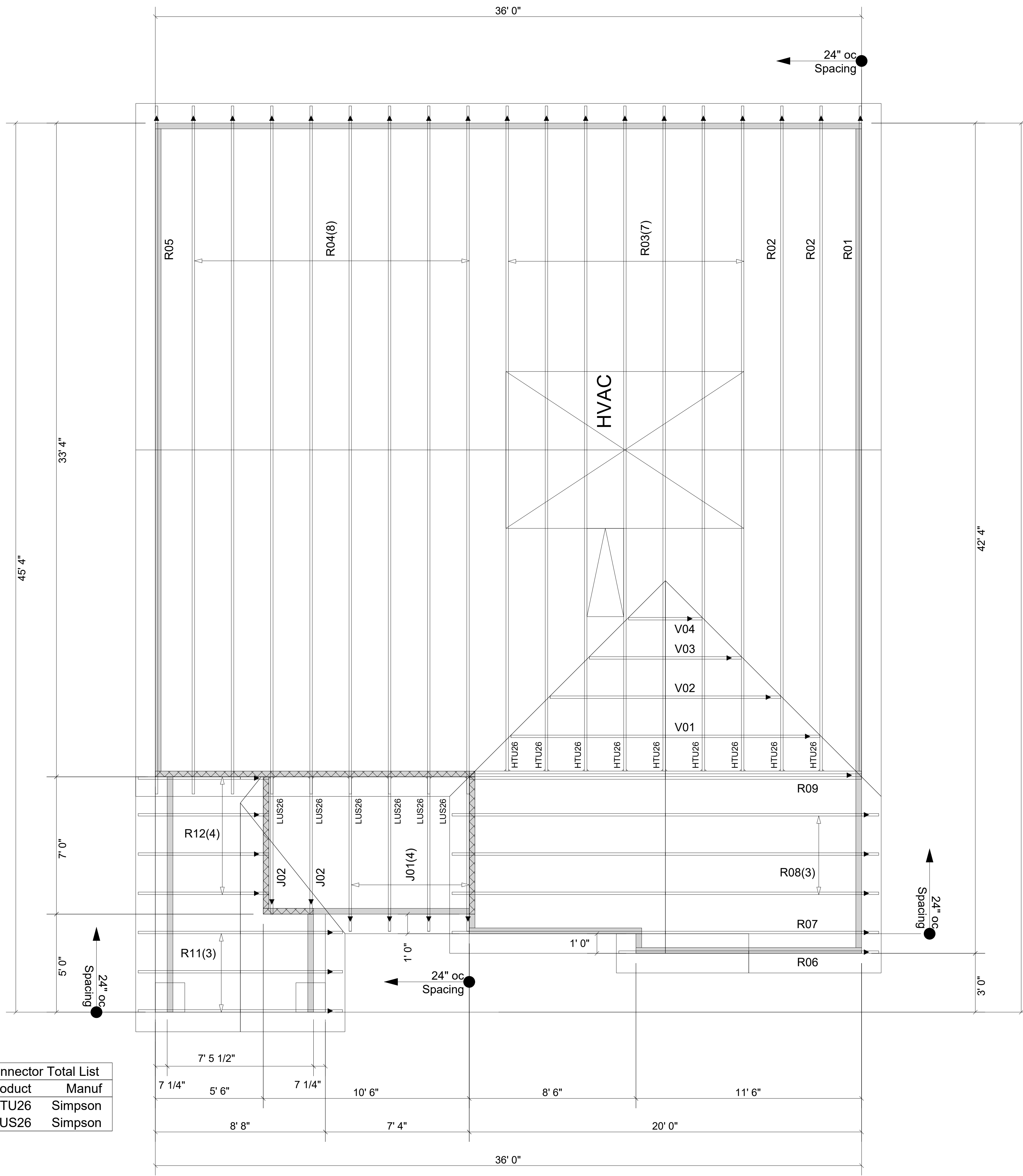


Truss Connector Total List		
Qty	Product	Manuf
9	HTU26	Simpson
6	LUS26	Simpson



**WARNING!** Long span trusses, 60' or greater in length, require extreme care and experience for proper and safe handling and installation. For general handling and installation guidance, see the "Guide to Good Practice for Handling, Installing, Restraining & Bracing of Metal Plate Connected Wood Trusses ("BCSI"), JOINTLY PRODUCED BY SBCA and TPI. For project specific guidance, consult with a registered design professional. ATLANTIC assumes no responsibility for the handling, installation or bracing of trusses.

▲ = LEFT END OF TRUSS

REVISIONS:



Moncks Corner/Easley, SC (800) 475-3999  
Sparta, NC (336) 372-2226

FOR PERMIT

Client:	MATTAMY HOMES-RALEIGH
Job:	LOT 117 PROVIDENCE CREEK
Plan Information:	REDWOOD-CR
NOT TO SCALE	Date: 01/14/25
Drawn By: MBB	Job #: 25-0641-R01
	Sales Rep: KYLE GIBSON
	Phone:

ROOF