

PRELIMINARY PLOT PLAN FOR

# MUNGO HOMES

LOT 28, CAMBRIDGE SUBDIVISION

132 SAGAMORE AVENUE

REF: P.B. 2025, PG.7

NEILL'S CREEK TOWNSHIP

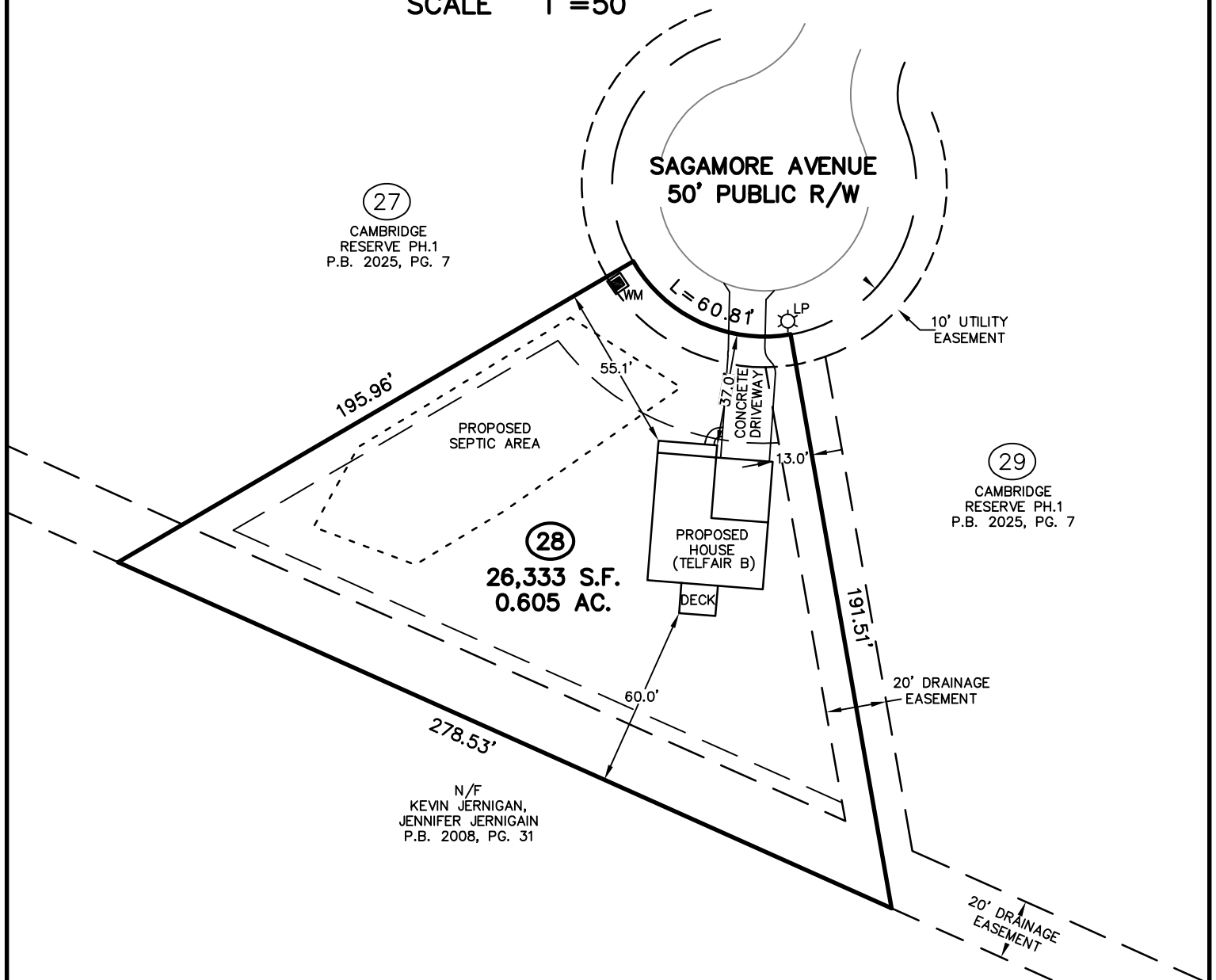
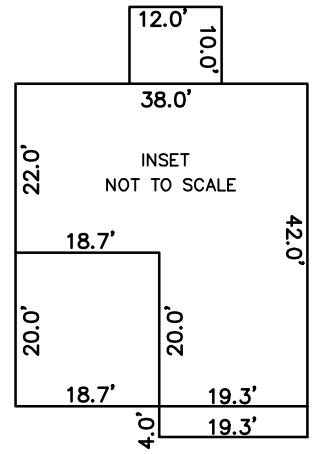
HARNETT COUNTY, NORTH CAROLINA

JANUARY 21, 2025

ZONED RA-30



SCALE 1"=50'

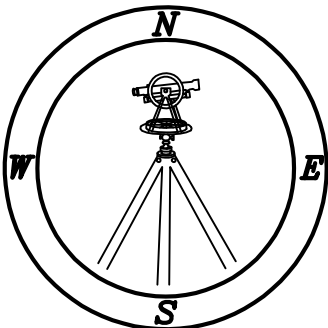


### IMPERVIOUS SURFACE TABLE

HOUSE	1,673 S.F.
DECK	120 S.F.
DRIVEWAY	621 S.F.
SIDEWALKS	31 S.F.
MISC/UTILITIES	9 S.F.
TOTAL IMPERVIOUS AREA	2,454 S.F.
TOTAL LOT AREA	26,333 S.F.
PERCENTAGE OF IMPERVIOUS AREA	9.31 %

TOTAL CONCRETE & LANDSCAPE	
CONCRETE	839 S.F.
LANDSCAPE	21,832 S.F.

THIS SURVEYOR DOES NOT WARRANT THE ACCURACY OF ARCHITECTURAL DIMENSIONS. THEY ARE TO BE VERIFIED BY THE CONTRACTOR.



# CMP

Professional Land Surveyors  
C-1525

333 S. White Street  
Post Office Box 1253  
Wake Forest, N.C. 27588  
(919)556-3148

### NOTES:

-THIS PLAN DOES NOT REFLECT AN ACTUAL SURVEY. IT IS A PRELIMINARY PLAN AND SHOULD BE USED FOR ITS INTENDED PURPOSE ONLY.  
-NOT FOR RECORDATION, CONVEYANCES, OR SALES.