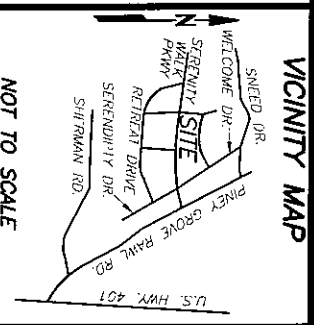
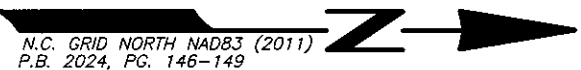
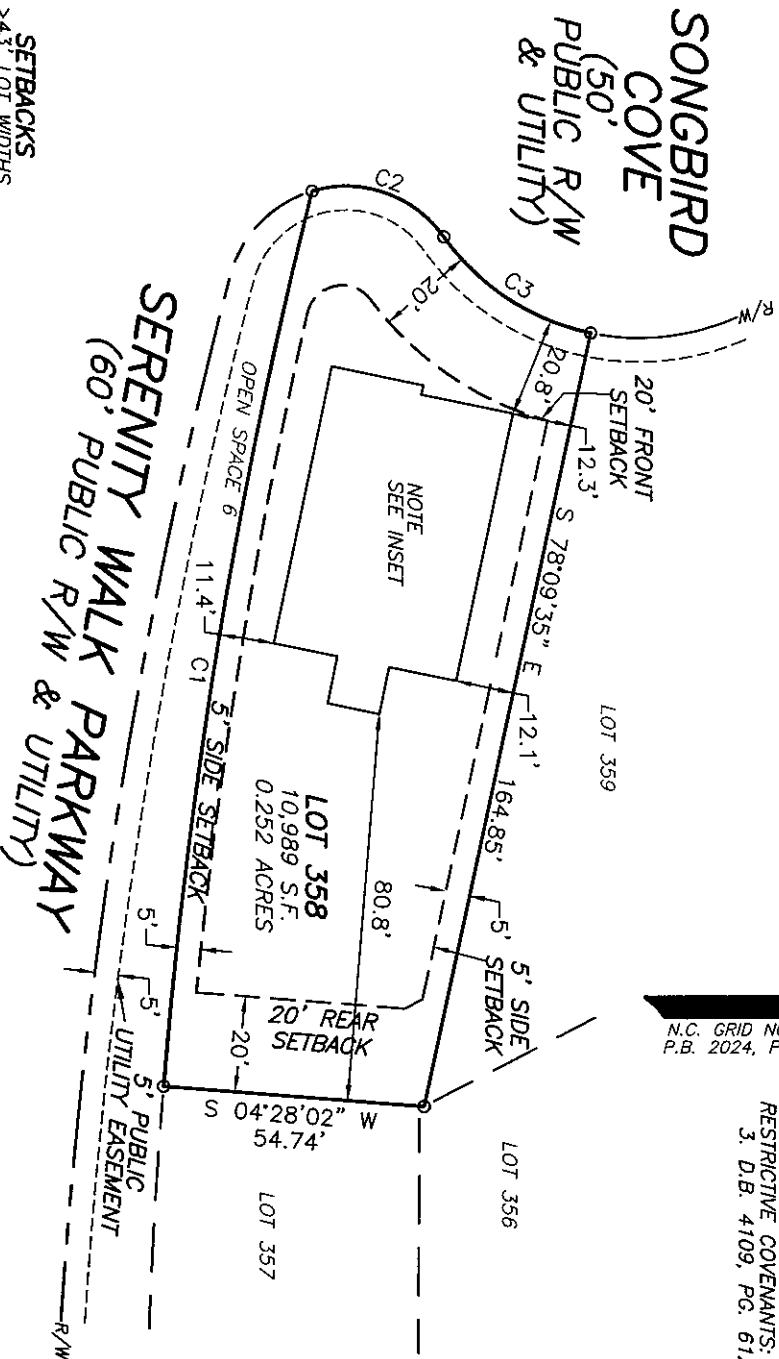


CURVE TABLE					
CURVE	DELTA	RADIUS	ARC	CHORD	TANGENT
C1	9°26'13"	1,150.00'	189.41'	189.20'	94.92'
C2	71°26'37"	25.00'	31.17'	29.19'	17.98'
C3	42°59'23"	50.00'	37.52'	36.64'	19.69'

LINE TABLE		
LINE	BEARING	DISTANCE
L1	S 74°44'02" W	18.39'
L2	N 29°23'12" E	75.36'



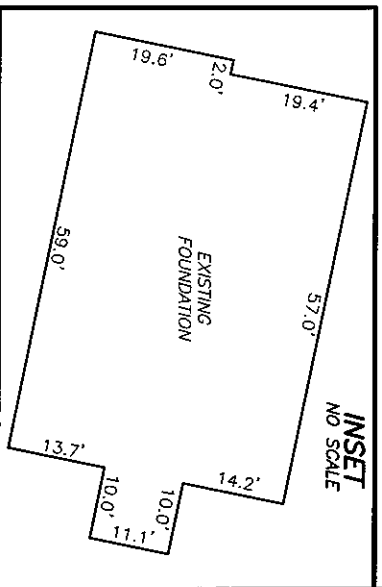
- REFERENCES:
- D.B. 4244 PG. 2058
PIN: 0655-13-4700.000
PID: 08065503 0032 13
 - D.B. 4149, PG. 210
 - D.B. 4109, PG. 612



SETBACKS
24.3' LOT WIDTHS
FRONT YARD-20'
SIDE YARD-5'
REAR YARD-20'
CORNER SIDE-12'

- NOTES:
- ALL EASEMENTS, RIGHTS OF WAY AND BOUNDARY INFORMATION TAKEN FROM P.B. 2024, PG. 146-149 UNLESS OTHERWISE NOTED.
 - PROPERTY IS SUBJECT TO ALL EASEMENTS AND RESTRICTIONS OF RECORD. NO TITLE EXAMINATION HAS BEEN DONE BY ROBINSON & PLANTE, P.C.

NOTE:
RATIO OF PRECISION IS 1:10,000+, MISCLASURE WAS DISTRIBUTED BY THE COMPASS METHOD. THE DISTANCES ON THIS MAP ARE ADJUSTED HORIZONTAL GROUND UNLESS NOTED OTHERWISE. ALL AREAS ARE CALCULATED BY COORDINATE COMPUTATION.



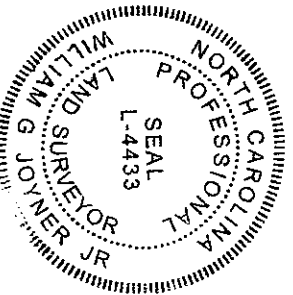
LOT 358 SERENITY SUBDIVISION
PHASE 2A
16 SONGBIRD COVE
HARNETT COUNTY
FUQUAY-VARINA, N.C. 27526



REFERENCE: PLAT BOOK 2024 PAGE 146-149.

FILE: STY1073358FD

I CERTIFY THAT THIS MAP WAS DRAWN UNDER MY SUPERVISION FROM AN ACTUAL SURVEY MADE UNDER MY SUPERVISION DESCRIPTION RECORDED IN REFERENCES AS SHOWN; THAT THE BOUNDARIES NOT SURVEYED ARE INDICATED AS DRAWN FROM INFORMATION IN THAT THE RATIO OF PRECISION IS 1:10,000. AND THAT THIS MAP MEET THE REQUIREMENTS OF THE STANDARDS OF PRACTICE FOR LAND SURVEYING IN NORTH CAROLINA (21 NCAC 56.16000).
THIS 9th DAY OF APRIL 2025.
William G Joyner Jr
PROFESSIONAL LAND SURVEYOR L-4433



ROBINSON & PLANTE PC
LAND SURVEYING
C-2687
970 TRINITY ROAD
RALEIGH, N.C. 27607
PHONE (919) 859-6030
FAX (919) 859-6032

DATE: 4-8-25

SCALE: 1"=40'