

Area of Interest (AOI) Information

Topographic map showing a proposed development area. A green polygon represents the development, with a blue line labeled "Gully" crossing it. A red circle indicates a "240 GPD - 2 Bedroom" structure. The map includes labels for "5.50 ACS JIMMY R CARROLL MAP#2004-530" and "2.54 ACS J CARROLL MAP#2002-289". A scale bar at the bottom indicates 0, 100, and 200 feet.



An area was identified that may be possible to use for a 240GPD/2BR subsurface wastewater system. The system type and exact location would need to be confirmed with a field layout/design. Client will need to confirm there are no restrictions, easements, right of ways or other encumbrances on the property that would limit the use of the area shown on the report.



Summary

Name	Count	Area(ft²)	Length(ft)
Borings	5	N/A	N/A
Points	2	N/A	N/A
System Description	1	N/A	N/A

Borings

#	Boring Type	H1_Depth	H1_Mineral	H1_Moist_C	H1_Plastic	H1_Stickin	H1_Structu	H1_Texture
1	Conventional	12	Slightly Expansive	Loose	Non Plastic	Non Sticky	Gr	Sandy Loam
2	Conventional	24	Slightly Expansive	Loose	Non Plastic	Non Sticky	Gr	Sandy Loam
3	Conventional	20	Slightly Expansive	Loose	Non Plastic	Non Sticky	Gr	Sandy Loam
4	Conventional	16	Slightly Expansive	Loose	Non Plastic	Non Sticky	Gr	Sandy Loam
5	Conventional	6	Slightly Expansive	Loose	Non Plastic	Non Sticky	Gr	Sandy Loam

#	H2_Depth	H2_Mineral	H2_Moist_C	H2_Plastic	H2_Stickin	H2_Structu	H2_Texture	H3_Depth
1	36.00	Slightly Expansive	Friable	Plastic	Sticky	SBK	Clay	
2	36.00	Slightly Expansive	V Friable	Slightly Plastic	Slightly Sticky	SBK	SC Loam	
3	36.00	Slightly Expansive	V Friable	Slightly Plastic	Slightly Sticky	SBK	SC Loam	
4	36.00	Slightly Expansive	Loose	Plastic	Sticky	SBK	Clay	
5	36.00	Slightly Expansive	Friable	Plastic	Sticky	SBK	Clay	

#	H3_Mineral	H3_Moist_C	H3_Plastic	H3_Stickin	H3_Structu	H3_Texture	Landscape_	LTAR
1							Linear	0.30
2							Linear	0.50
3							Linear	0.50
4							Linear	0.30
5							Linear	0.30

#	Notes	Saprolite	Slope	Soil_Wetne	Usable_Dep	Count
1			5-8%		36	1
2			5-8%		36	1
3			5-8%		36	1
4			5-8%		36	1
5			5-8%		36	1

Points

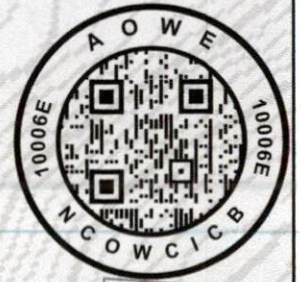
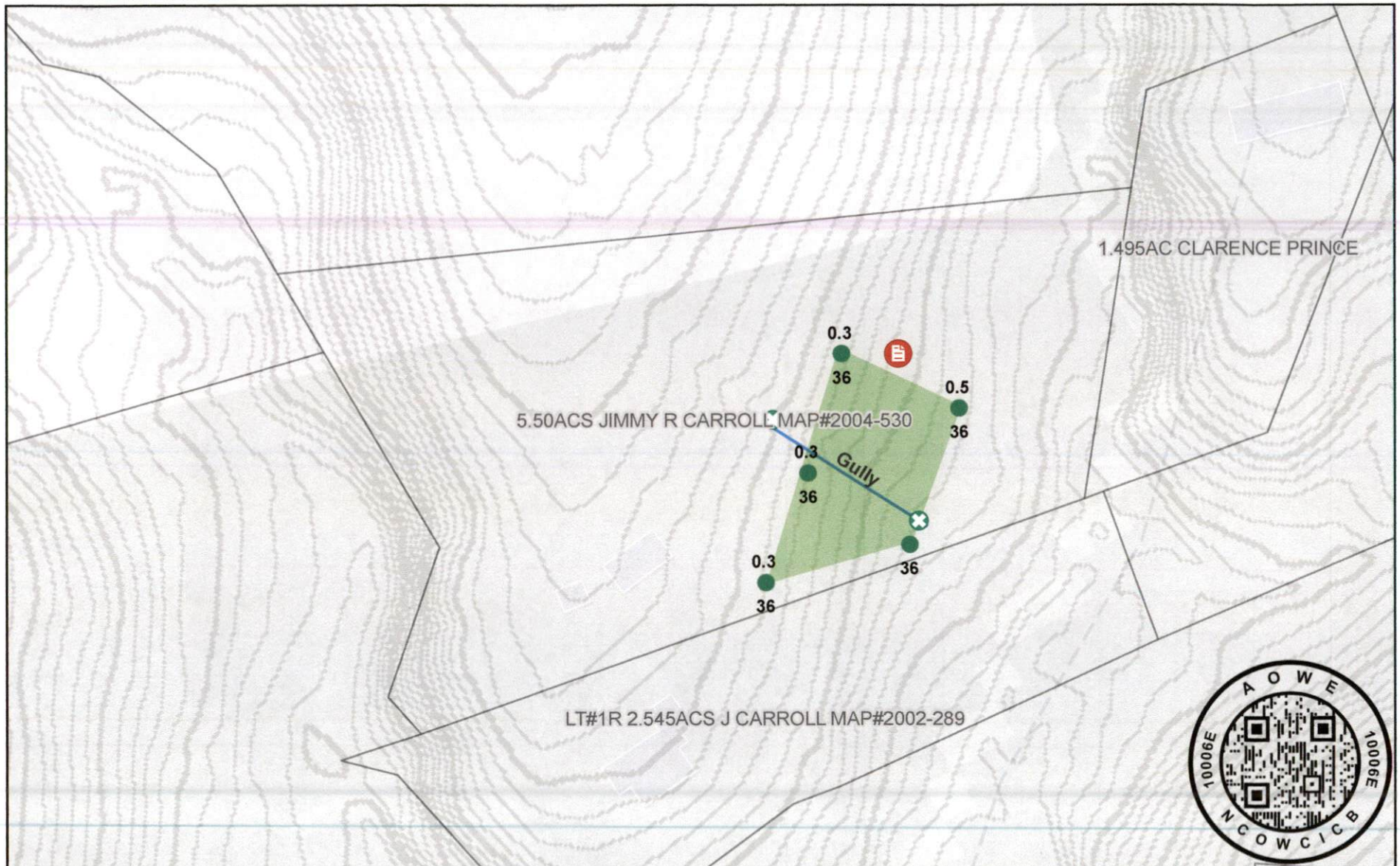
#	Point_Desc	Point_Type	Count
1		Bad Topo	2

System Description

#	GPD	Septic Tank Capacity	Pump Tank Capacity	Distribution Method	Initial System Type	Initial LTAR	Max Depth Initial	Line Length Initial
1	240GPD	1,000 Gallon		Parallel or Serial	Accepted	.3	22"	200'

#	Repair System Type	Repair LTAR	Line Length Repair	Max Depth Repair	System Description	Count
1	Accepted	.3	200'	22"		1

1590 Wade Stephenson Rd. 2025



1/29/2025

Borings

● Conventional

Points

⊗ Bad Topo



System Description



Usable Soils Area 2' Contours



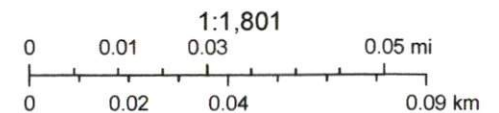
Line Generic



Parcels

255

0



Esri Community Maps Contributors, Duke University, Wake County, State of North Carolina DOT, © OpenStreetMap, Microsoft, Esri, TomTom, Garmin,