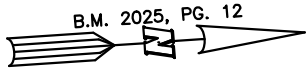


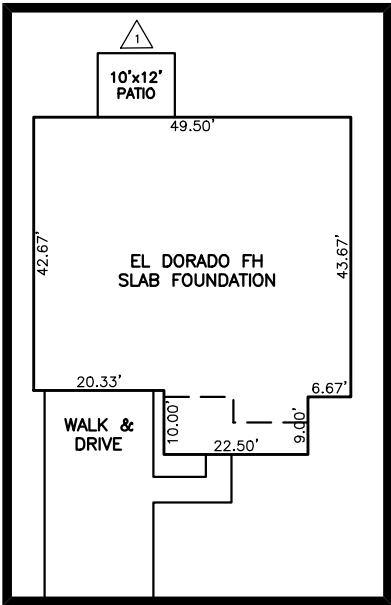
SITE PLAN FOR
MATTAMY HOMES
272 THOMAS STORE DRIVE
LOT 54, FOX FIELD FARM
UPPER LITTLE RIVER TOWNSHIP, HARNETT COUNTY, NORTH CAROLINA



LEGEND

- AIR CONDITIONER
- BACK of CURB
- BACK FLOW PREVENTER
- CLEANOUT
- CURB INLET
- DHS DRILL HOLE SET
- ECM EXISTING CONCRETE MONUMENT
- EDH EXISTING DRILL HOLE
- EIS EXISTING IRON STAKE
- EIP EXISTING IRON PIPE
- EM ELECTRIC METER
- EPK EXISTING PK NAIL
- ES ELECTRIC STUB
- FLARED END SECTION
- FIRE HYDRANT
- FIBER OPTIC PEDESTAL
- GAS METER
- GUY
- INVERT
- IPS IRON PIPE SET
- IRS IRON ROD SET
- LIGHT POLE
- MNS MAGNETIC NAIL SET
- MANHOLE SANITARY SEWER
- MANHOLE STORM SEWER
- OVERHEAD WIRES
- PK NAIL SET
- POINT NOT SET
- RAIL ROAD SPIKE
- TELEPHONE PEDESTAL
- TRANSFORMER
- CABLE TV PEDESTAL
- UTILITY POLE
- WATER METER
- WATER VALVE
- YARD INLET
- FIELD MEASUREMENT
- REVISION TRIANGLE

IMPERVIOUS SURFACES	S.F.
HOUSE	2,350
WALK & DRIVE	850
PORCH	120
PATIO	40
TOTAL	3,360



INSET SCALE: 1"=30"

58

50

51

54

52,904 S.F.
1.21 AC.

52

53

55

THOMAS STORE DRIVE
50' PUBLIC R/W

SETBACK INFO

FRONT: 35'
REAR: 25'
SIDES: 10'
CORNER SIDE: 20'

REFERENCES:

B.M. 2025, PG. 12



SCALE: 1" = 50'

THIS IS A SITE PLAN AS DEFINED BY G.S. 160D-102 AND IS NOT INTENDED TO BE ATTACHED TO ANY INSTRUMENT RECORDED IN THE REGISTER OF DEEDS OFFICE

1 10'x12' PATIO

SITE PLAN
NOT FOR RECORDATION,
CONVEYANCE OR SALES

REV CODE: 1.FLIP, 2.PLAN, 3.ROTATE, 4.MOVE, 5.SS
6.SEVERAL OF ABOVE, 7.LAND FEATURE, 8. OTHER

REV1: MAR. 05, 2025(7)
DATE: FEB. 03, 2025

F.B. _____

RWK, PA
ENGINEERING ~ SURVEYING
CORPORATE LICENSE: C-1771
101 W. MAIN ST., SUITE 202
GARNER, NC 27529
PHONE (919) 779-4854
FAX (919) 779-4056

O:\FOX FIELD FARM\FFFM54\FFFM54.DWG