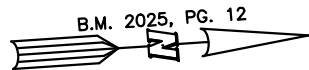


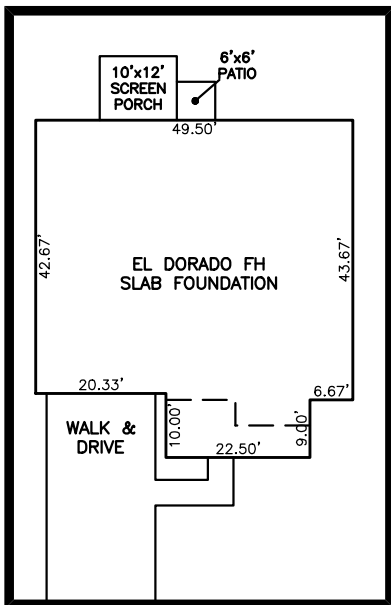
SITE PLAN FOR  
**MATTAMY HOMES**  
 272 THOMAS STORE DRIVE  
 LOT 54, FOX FIELD FARM  
 UPPER LITTLE RIVER TOWNSHIP, HARNETT COUNTY, NORTH CAROLINA



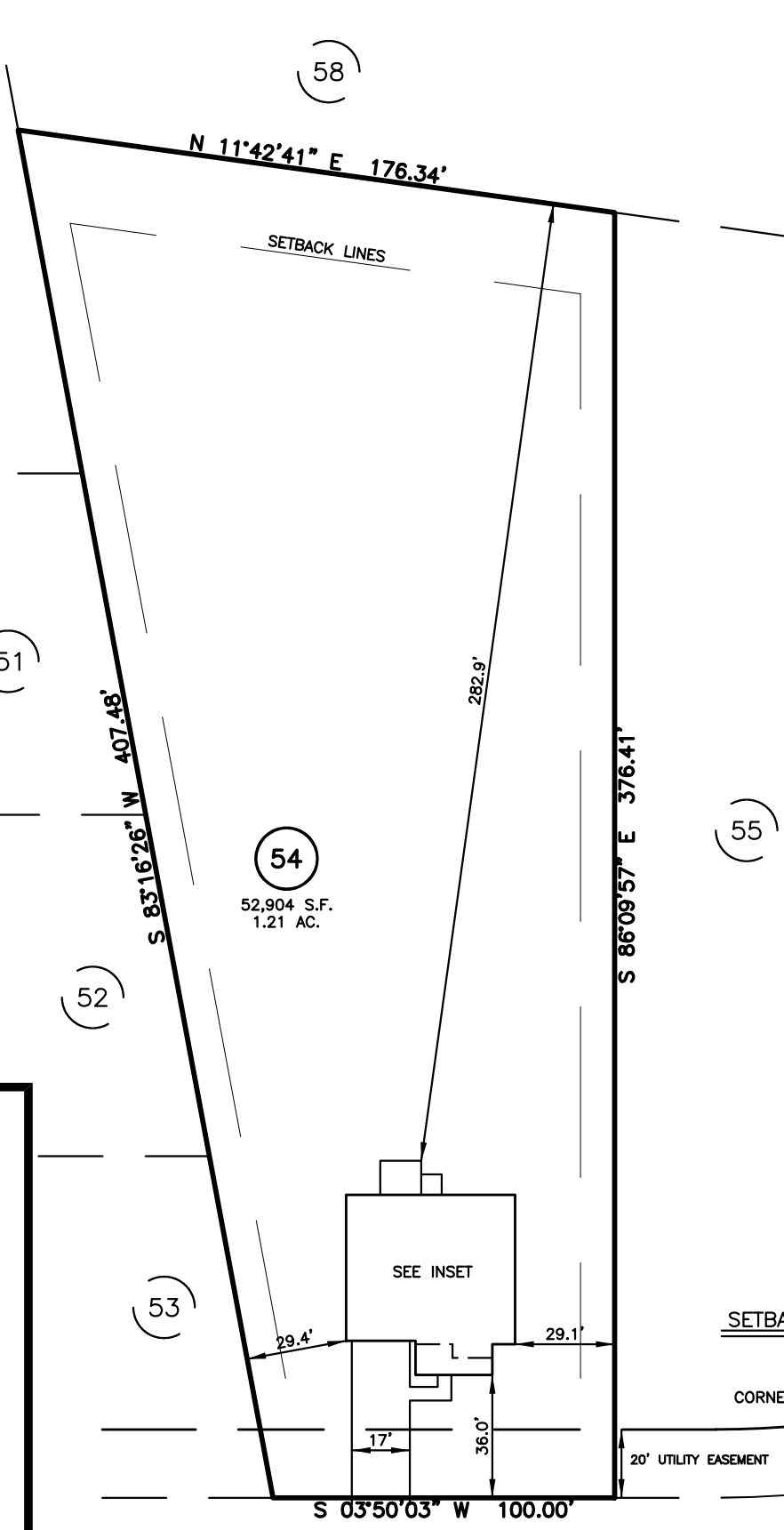
**LEGEND**

- ▲ AIR CONDITIONER
- BC BACK OF CURB
- BFP BACK FLOW PREVENTER
- CLEANOUT
- CURB INLET
- DHS DRILL HOLE SET
- ECM EXISTING CONCRETE MONUMENT
- EDH EXISTING DRILL HOLE
- EIS EXISTING IRON STAKE
- EIP EXISTING IRON PIPE
- EM ELECTRIC METER
- EPK EXISTING PK NAIL
- ES ELECTRIC STUB
- FLARED END SECTION
- FIRE HYDRANT
- FIBER OPTIC PEDESTAL
- GM GAS METER
- GUY
- INV. INVERT
- IPS IRON PIPE SET
- IRS IRON ROD SET
- LIGHT POLE
- MNS MAGNETIC NAIL SET
- MANHOLE SANITARY SEWER
- MANHOLE STORM SEWER
- OHV OVERHEAD WIRES
- PKS PK NAIL SET
- PNS POINT NOT SET
- RRS RAIL ROAD SPIKE
- TELEPHONE PEDESTAL
- TRANSFORMER
- CABLE TV PEDESTAL
- UTILITY POLE
- WATER METER
- WATER VALVE
- YARD INLET
- △ FIELD MEASUREMENT
- △ REVISION TRIANGLE

IMPERVIOUS SURFACES	S.F.
HOUSE	2,350
WALK & DRIVE	850
PORCH	120
PATIO	40
<b>TOTAL</b>	<b>3,360</b>



INSET SCALE: 1"=30"



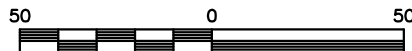
THOMAS STORE DRIVE  
 50' PUBLIC R/W

**SETBACK INFO**

- FRONT: 35'
- REAR: 25'
- SIDES: 10'
- CORNER SIDE: 20'

**REFERENCES:**

B.M. 2025, PG. 12



SCALE: 1" = 50'

THIS IS A SITE PLAN AS DEFINED BY G.S. 160D-102 AND IS NOT INTENDED TO BE ATTACHED TO ANY INSTRUMENT RECORDED IN THE REGISTER OF DEEDS OFFICE

**SITE PLAN**  
 NOT FOR RECORDATION,  
 CONVEYANCE OR SALES

REV CODE: 1.FLIP, 2.PLAN, 3.ROTATE, 4.MOVE, 5.SS  
 6.SEVERAL OF ABOVE, 7.LAND FEATURE, 8. OTHER

DATE: FEB. 03, 2025

F.B. \_\_\_\_\_

RWK, PA

**ENGINEERING ~ SURVEYING**

CORPORATE LICENSE: C-1771  
 101 W. MAIN ST., SUITE 202  
 GARNER, NC 27529  
 PHONE (919) 779-4854  
 FAX (919) 779-4056