

THE "CHATHAM"
FARMHOUSE - A
MAGNOLIA ACRES
HARNETT COUNTY, NC
LOT - 16
HHHUNT HOMES

GENERAL NOTES:

- CONTRACTOR AND EACH SUB-CONTRACTOR SHALL BE REQUIRED TO CHECK AND BE RESPONSIBLE FOR CONFORMANCE OF PLANS WITH ALL REQUIREMENTS AND LOCAL ORDINANCES, BUILDING CODES, BUILDING INSPECTOR, AND MANUFACTURERS RECOMMENDATIONS PRIOR TO SIGNING THE CONTRACT OR BEGINNING WORK. THE COST OF CORRECTION, MODIFICATIONS, ADDITIONS, ETC., WHICH ARE CALLED FOR OR REQUIRED BY LOCAL ORDINANCES, BUILDING CODES, BUILDING INSPECTOR AND MANUFACTURERS AND NOT SPECIFICALLY NOTED OR SHOWN ON THE DRAWINGS TO COMPLETE A TURNKEY JOB SHALL BE PAID FOR AND BE THE RESPONSIBILITY OF THE CONTRACTOR. THE DRAWINGS ARE DIAGRAMMATIC, INTENDED TO OUTLINE GENERAL REQUIREMENTS ONLY AND NOT INTENDED TO BE COMPLETE IN ALL DETAILS. SPECIFIC IMPLEMENTATIONS OF PLANS SHALL BE THE REQUIREMENT OF THE CONTRACTOR WHO REPRESENTS HE HAS THE SKILL AND EXPERT KNOWLEDGE TO EXECUTE THE WORK REQUIRED.
- ALL WORK SHALL BE ACCURATELY LAID OUT IN COOPERATION WITH OTHER TRADES TO AVOID CONFLICTS AND TO OBTAIN A NEAT WORKMANLIKE INSTALLATION. EACH SUB-CONTRACTOR IS RESPONSIBLE FOR COORDINATING AND MAKING SURE HIS WORK PROPERLY CONNECTS WITH ADJOINING OR CONNECTING WORK ON WHICH THE CONSTRUCTION OF HIS WORK IS DEPENDENT FOR A TURNKEY JOB.
- ALL DRAWINGS ARE INTENDED TO BE RIGID IN SPECIFIC DETAILS. WHERE SUCH DETAILS MAY BE IN CONFLICT WITH RECOMMENDATIONS OF THE MANUFACTURER OF EQUIPMENT ACTUALLY PROVIDED AND WHEN DISCREPANCIES BETWEEN DRAWINGS AND RECOMMENDATIONS CHANGE THE INTENT OF THE DRAWINGS, SUCH CHANGES ARE TO BE APPROVED BY HHHUNT.
- THE CONTRACTOR AND EACH SUB-CONTRACTOR SHALL PROTECT HIS AND OTHERS WORK FROM DAMAGE DUE TO HIS OPERATIONS AND SHALL REPLACE, OR REPAIR AS REQUIRED, ALL DAMAGED WORK TO THE SATISFACTION OF THE OWNER.
- MEASUREMENTS AND WORKMANSHIP AND WORKING CONDITIONS FOR ALL WORK SHALL BE TAKEN AT THE SITE AND COORDINATED WITH CONNECTING WORK BY EACH SUB-CONTRACTOR. EACH SUB-CONTRACTOR SHALL VERIFY FIGURES SHOWN ON DRAWINGS BEFORE LAYING OUT OR PROCEEDING WITH WORK AND SHALL BE HELD RESPONSIBLE FOR ANY ERRORS RESULTING FROM HIS FAILURE TO EXERCISE SUCH VERIFICATION.
- THE ELECTRICAL AND MECHANICAL CONTRACTORS SHALL OBTAIN AND SUBMIT TO THE LOCAL DEPARTMENT OF BUILDING INSPECTIONS ALL DRAWINGS AND DOCUMENTATION REQUIRED TO OBTAIN A PERMIT FOR THE ELECTRICAL AND MECHANICAL WORK. HVAC PLANS MUST BE APPROVED BY HHHUNT PRIOR TO INSTALLATION.
- BLOCKING: GENERAL CONTRACTOR SHALL PROVIDE ADEQUATE BLOCKING ON WALLS AND CEILING FOR ATTACHING FIXTURES, EQUIPMENT, DRAPERY TRACK, ETC.

STRUCTURAL COORDINATOR:

Tanner Lester

11237 Nuckols Road, Glen Allen, VA 23059
Telephone: (804) 762-4667
Email: talester@hhhunt.com

SHEET INDEX:

- | | |
|------|-----------------------|
| A-2 | FIRST FLOOR PLAN |
| A-3 | SECOND FLOOR PLAN |
| S-4 | ROOF PLAN |
| A-5 | ELEVATIONS |
| A-5b | ELEVATIONS-SIDES-REAR |
| A-7 | SECTIONS |

PLANS TO BE BUILT:

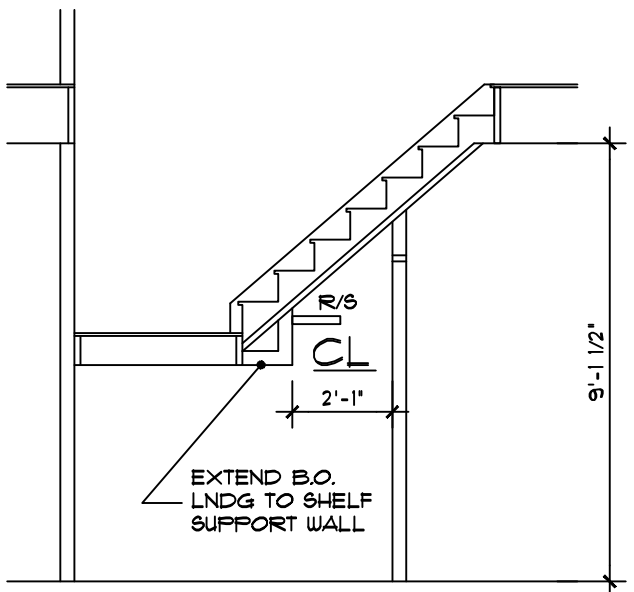
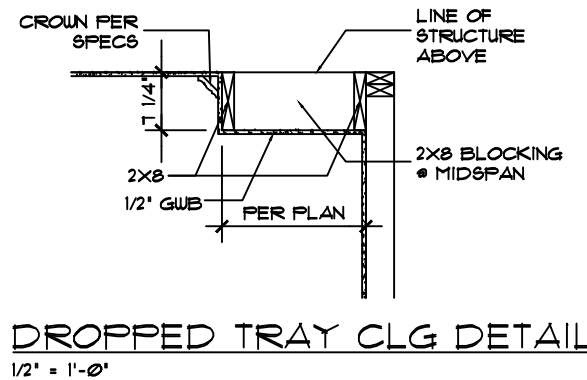
- ☐ As Drawn
☐ Reversed (All)

NOTES:

- ALL EXTERIOR WALLS ARE 4" (U.N.O.)
- ALL INTERIOR WALLS ARE 3 1/2" (U.N.O.)
- SMOKE DETECTORS SHALL BE INTERCONNECTED AND SHALL RECEIVE THEIR PRIMARY POWER BY PERMANENT CONNECTION TO THE DWELLINGS ELECTRICAL SYSTEM AND WHEN PRIMARY POWER IS INTERRUPTED, SHALL RECEIVE POWER FROM A BATTERY

CODE ANALYSIS

2018 NORTH CAROLINA RESIDENTIAL CODE
USE GROUP - R-5
CONSTRUCTION TYPE - 5B
BUILDING SHALL NOT BE SPRINKLERED

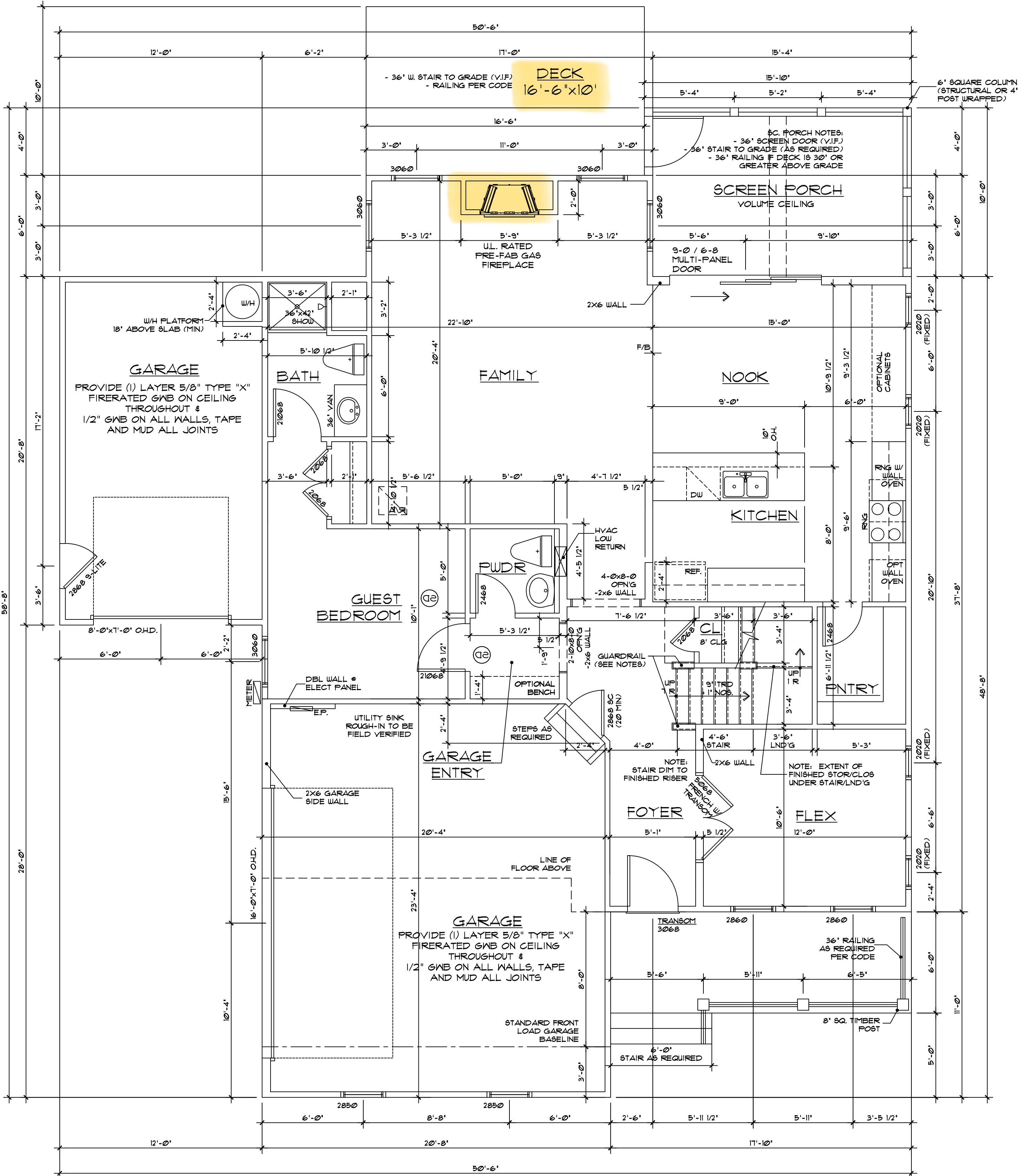


STAIR CLOS DETAIL
1/4" = 1'-0"

NOTE:
** = 2-2x4 STUD POCKET
BETWEEN WINDOWS (TYPICAL)

- STAIR & RAIL NOTES**
- STAIR TREADS SHALL BE 9" PLUS 1" NOSING
 - STAIR RISERS SHALL BE 8-1/4" MAX.
 - 6'-8" MIN HEADROOM (FINISHED) AT ALL STAIR LOCATIONS
 - ALL HANDRAILS SHALL BE 34"-38" ABOVE NOSING, CONTINUOUS ON ONE SIDE OF STAIR RUN
 - HANDRAIL GRIP SIZED SHALL BE 1-1/4" DIA MIN TO 2" DIA MAX
 - GUARDRAIL NOTES:
 - STANDARD KNEEWALL WITH WOOD CAP. 42" ABOVE SUBFLOOR OR 42" ABOVE NOSING AT STAIR
 - OPTIONAL 36" H. RAILING IN LIEU OF KNEEWALL
 - ALL BALUSTERS SHALL BE CONSTRUCTED TO NOT PERMIT A 4" DIA. SPHERE TO PASS
- NOTE: ALL NOTES TYPICAL UNLESS NOTED OTHERWISE OR REQUIRED BY CODE

Chatham - Floor Areas	1/18/2012	
	INSIDE	OUTSIDE
FIRST FLOOR	1251 sf	1304 sf
SECOND FLOOR	1334 sf	1384 sf
TOTAL	2585 sf	2688 sf
GARAGE (SIDELOAD)	457 sf	475 sf



FIRST FLOOR PLAN
1/4" = 1'-0"

COPYRIGHT 2025 HHHUNT HOMES ALL RIGHTS PROTECTED REPRODUCTION PROHIBITED
Purchaser understands that the plan is not precisely to scale and the dimensions shown therein are also not precise.
Purchaser agrees that it is in HHHunt Homes' sole discretion to deviate from the plans and specifications, provided the improvements as built are in substantial compliance with the approved plans.



HHHunt Homes
11237 Nuckols Road
Glen Allen, Va. 23059
(804) 762-4667

MA - 16
CHATHAM - FA

842 MAGNOLIA ACRES
FUQUAY-VARINA, NC 27526

Revisions:	
Scale:	1/4"=1'
Drawn By:	TAL
Checked By:	MFR
Date:	1/27/2025

STAIR & RAIL NOTES

- STAIR TREADS SHALL BE 9" PLUS 1" NOSING

- STAIR RISERS SHALL BE 8-1/4" MAX.

- 6'-8" MIN HEADROOM (FINISHED) AT ALL STAIR LOCATIONS

- ALL HANDRAILS SHALL BE 34"-38" ABOVE NOSING, CONTINUOUS ON ONE SIDE OF STAIR RUN

- HANDRAIL GRIP SIZED SHALL BE 1-1/4" DIA MIN TO 2" DIA MAX

- GUARDRAIL NOTES:

- STANDARD KNEEWALL WITH WOOD CAP, 42" ABOVE SUBFLOOR OR 42" ABOVE NOSING AT STAIR

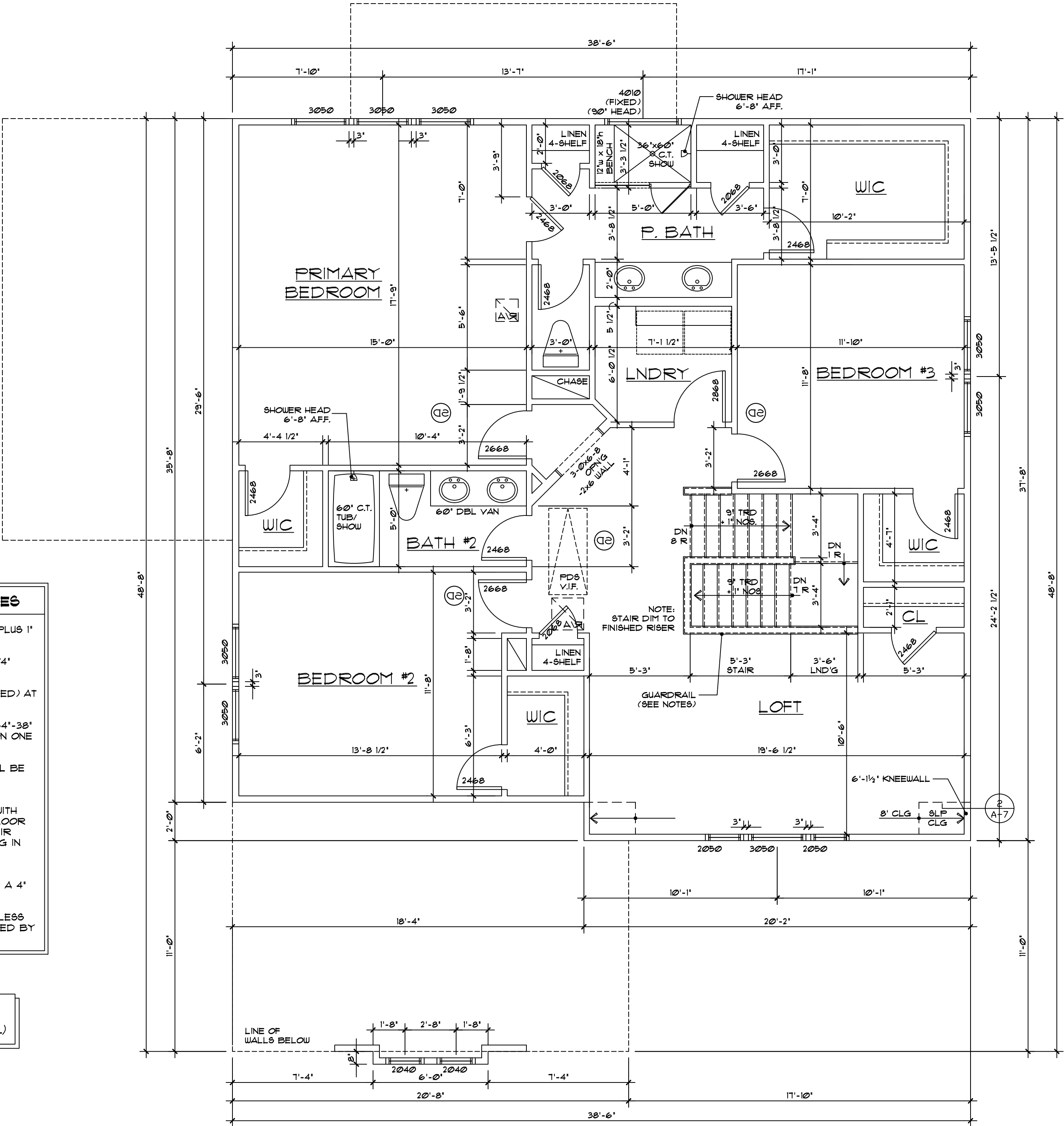
- OPTIONAL 36" H. RAILING IN LIEU OF KNEEWALL

- ALL BALUSTERS SHALL BE CONSTRUCTED TO NOT PERMIT A 4" DIA. SPHERE TO PASS

NOTE: ALL NOTES TYPICAL UNLESS NOTED OTHERWISE OR REQUIRED BY CODE

NOTE:

** = 2-2x4 STUD POCKET BETWEEN WINDOWS (TYPICAL)



SECOND FLOOR PLAN

1/4" = 1'-0"

COPYRIGHT 2025 HHHUNT HOMES ALL RIGHTS PROTECTED REPRODUCTION PROHIBITED
Purchaser understands that the plan is not precisely to scale and the dimensions shown therein are also not precise.

Purchaser agrees that it is in HHHunt Homes' sole discretion to deviate from the plans and specifications, provided the improvements as built are in substantial compliance with the approved plans.

Revisions:	
Scale: 1/4"=1'	
Drawn By: TAL	
Checked By: MFR	
Date: 1/27/2025	

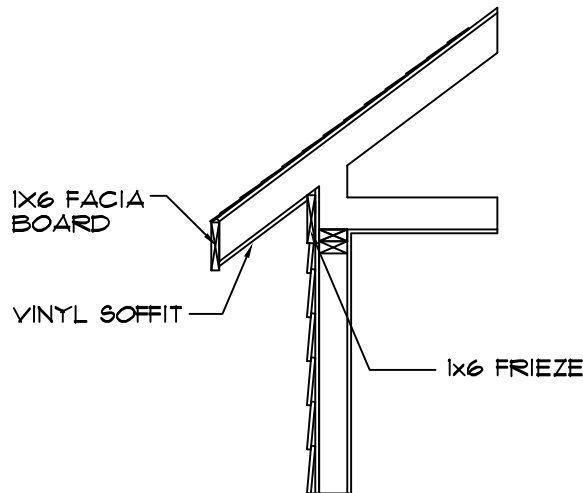
A-3

842 MAGNOLIA ACRES
FUQUAY-VARINA, NC 27526

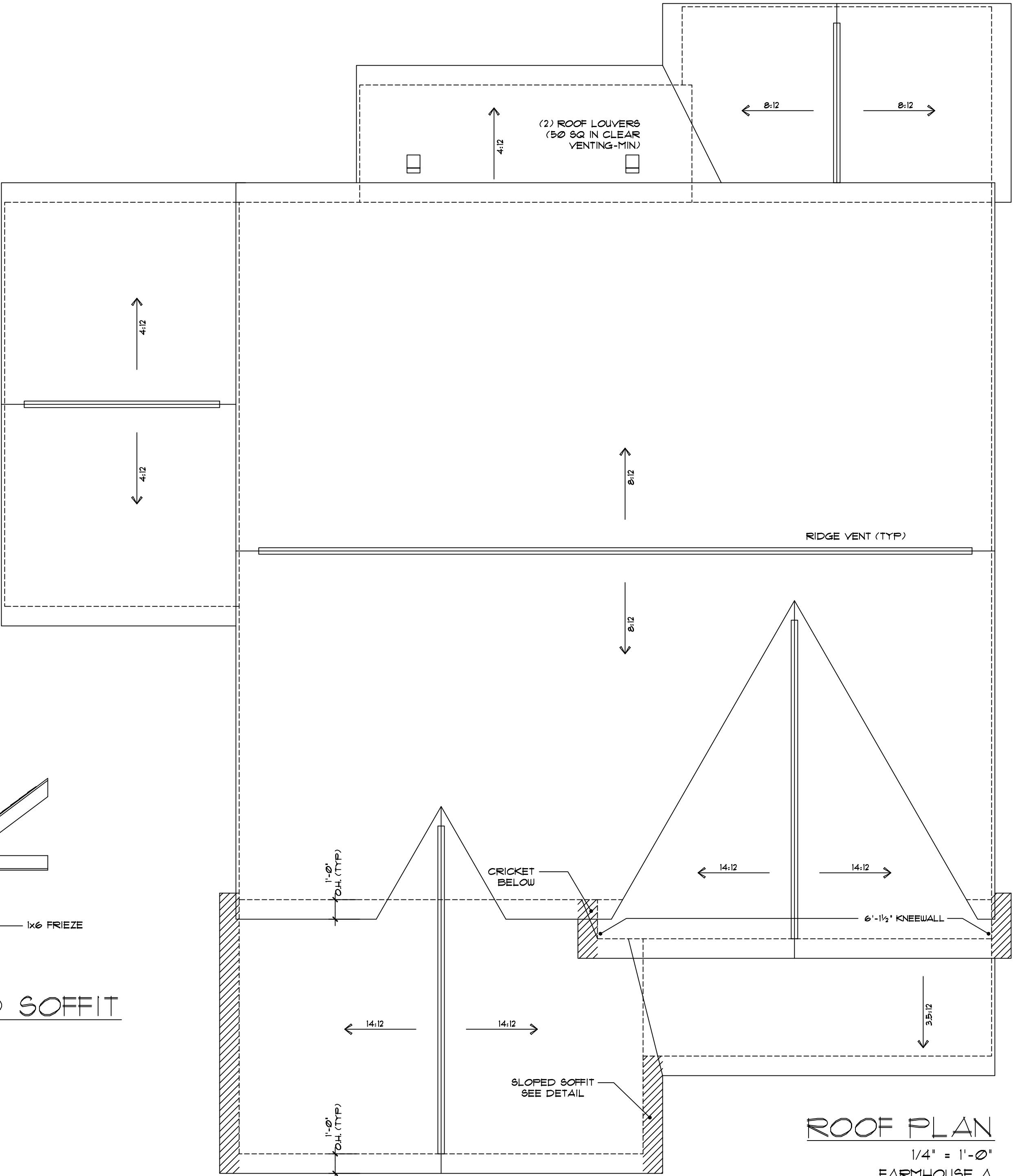
MA - 16
CHATHAM - FA

HHHunt Homes
11237 Nuckols Road
Glen Allen, Va. 23059
(804) 762-4667





SLOPED SOFFIT
1/2" = 1'-0"



COPYRIGHT 2025 HHHUNT HOMES ALL RIGHTS PROTECTED REPRODUCTION PROHIBITED
Purchaser understands that the plan is not precisely to scale and the dimensions shown therein are also not precise.

Purchaser agrees that it is in HHHunt Homes' sole discretion to deviate from the plans and specifications, provided the improvements as built are in substantial compliance with the approved plans.

842 MAGNOLIA ACRES
FUQUAY-VARINA, NC 27526

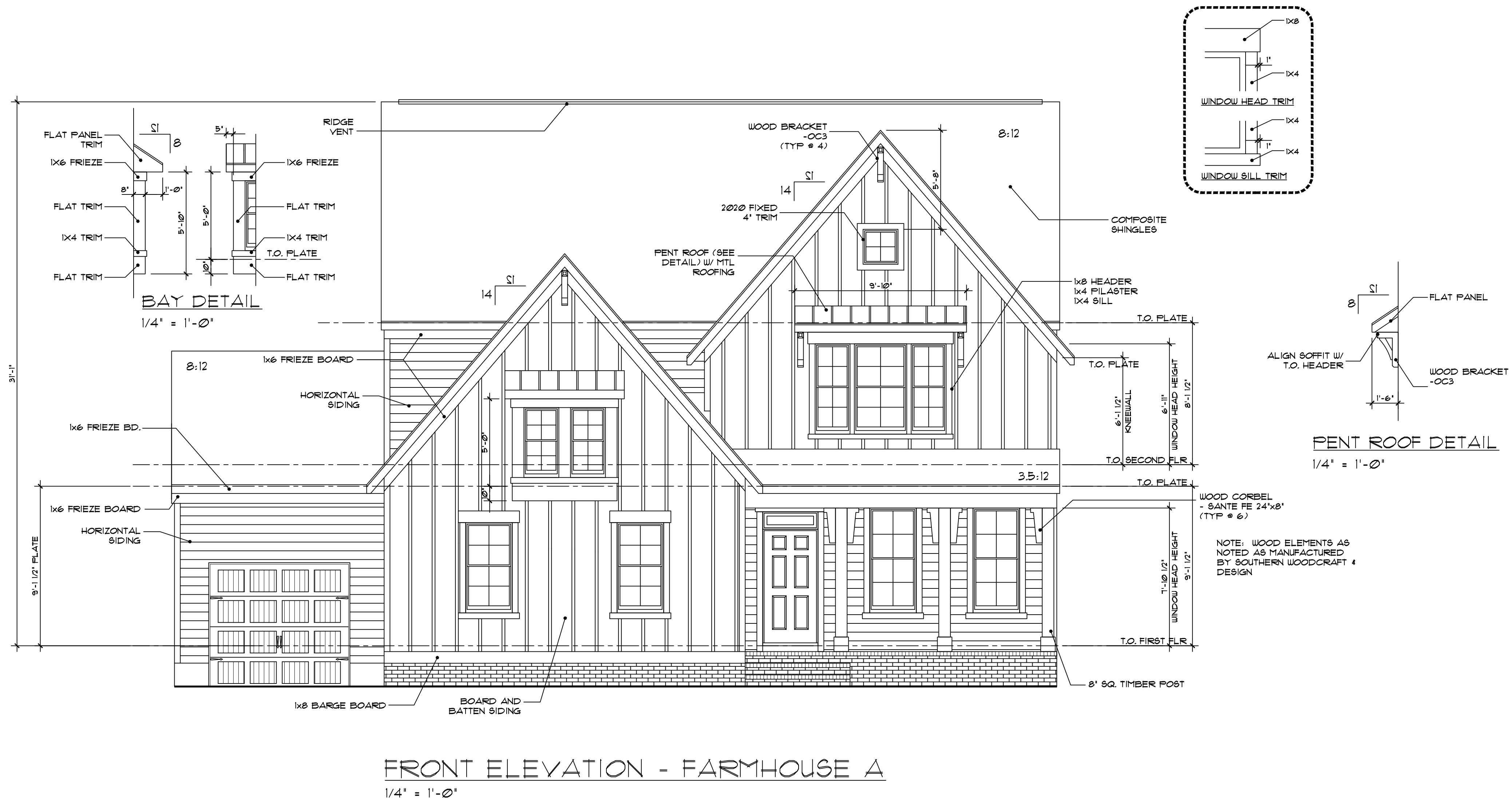
Revisions:	
Scale: 1/4"=1'	
Drawn By: TAL	
Checked By: MFR	
Date: 1/27/2025	

MA - 16
CHATHAM - FA

HHHunt Homes
11237 Nuckols Road
Glen Allen, Va. 23059
(804) 762-4667



S-4
FA



FRONT ELEVATION - FARMHOUSE A
1/4" = 1'-0"

COPYRIGHT 2025 HHHUNT HOMES ALL RIGHTS PROTECTED REPRODUCTION PROHIBITED
Purchaser understands that the plan is not precisely to scale and the dimensions shown therein are also not precise.
Purchaser agrees that it is in HHHunt Homes' sole discretion to deviate from the plans and specifications, provided the improvements as built are in substantial compliance with the approved plans.



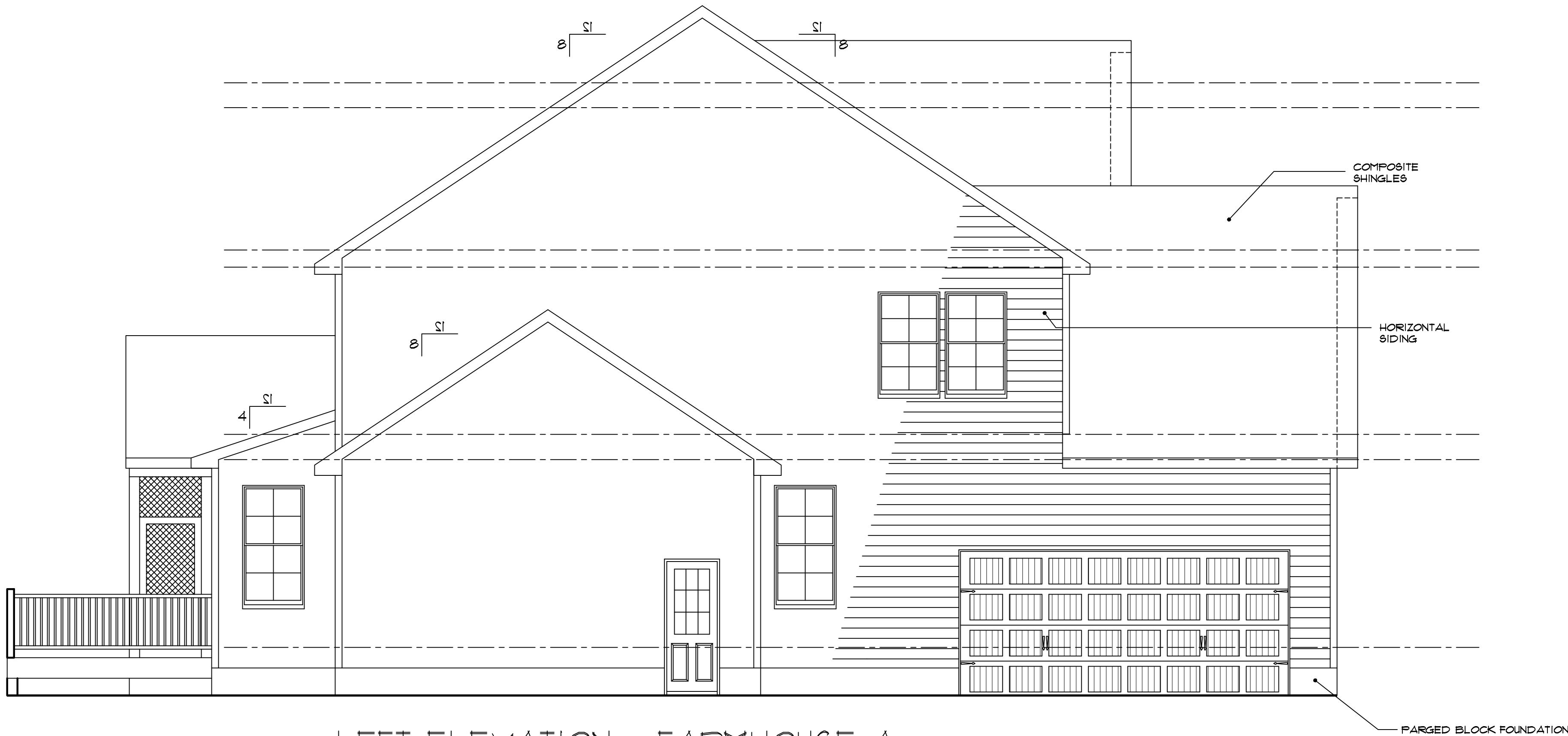
HHHunt Homes
11237 Nuckols Road
Glen Allen, Va. 23059
(804) 762-4667

MA - 16
CHATHAM - FA

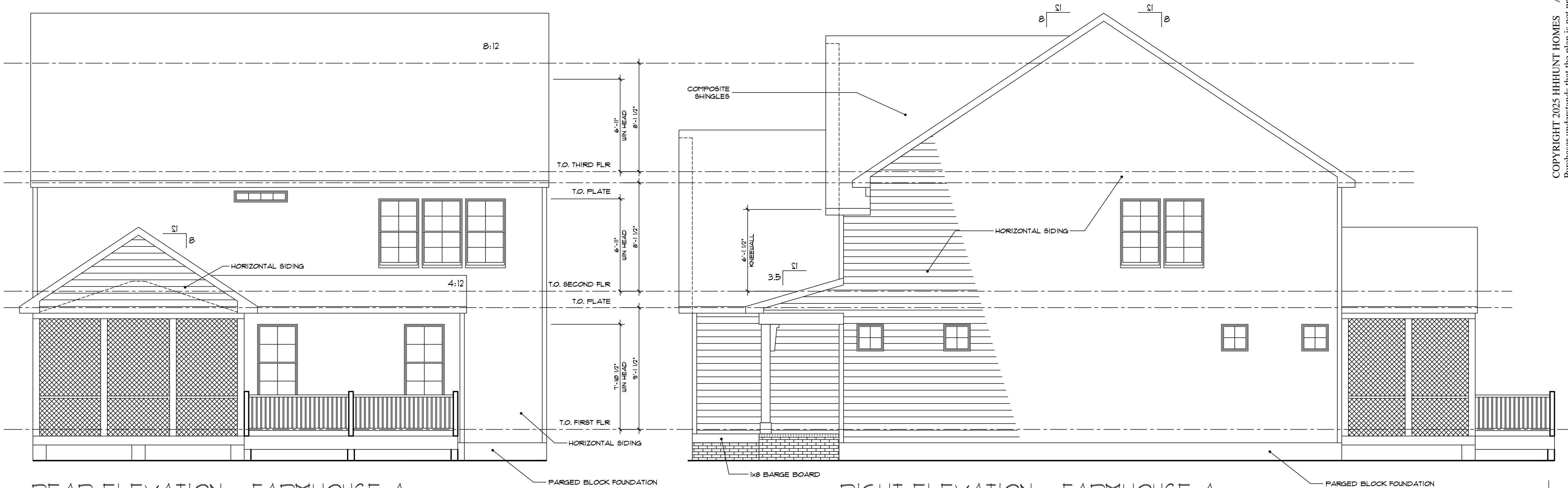
842 MAGNOLIA ACRES
FUQUAY-VARINA, NC 27526

Revisions:	
Scale: 1/4"=1'	
Drawn By: TAL	
Checked By: MFR	
Date: 1/27/2025	

A-5
FA-SL



LEFT ELEVATION - FARMHOUSE A
1/4" = 1'-0"



REAR ELEVATION - FARMHOUSE A
1/4" = 1'-0"

RIGHT ELEVATION - FARMHOUSE A
1/4" = 1'-0"

COPYRIGHT 2025 HHHUNT HOMES ALL RIGHTS PROTECTED REPRODUCTION PROHIBITED
Purchaser understands that the plan is not precisely to scale and the dimensions shown therein are also not precise.
Purchaser agrees that it is in HHHunt Homes' sole discretion to deviate from the plans and specifications, provided the improvements as built are in substantial compliance with the approved plans.



HHHunt Homes
11237 Nuckols Road
Glen Allen, Va. 23059
(804) 762-4667

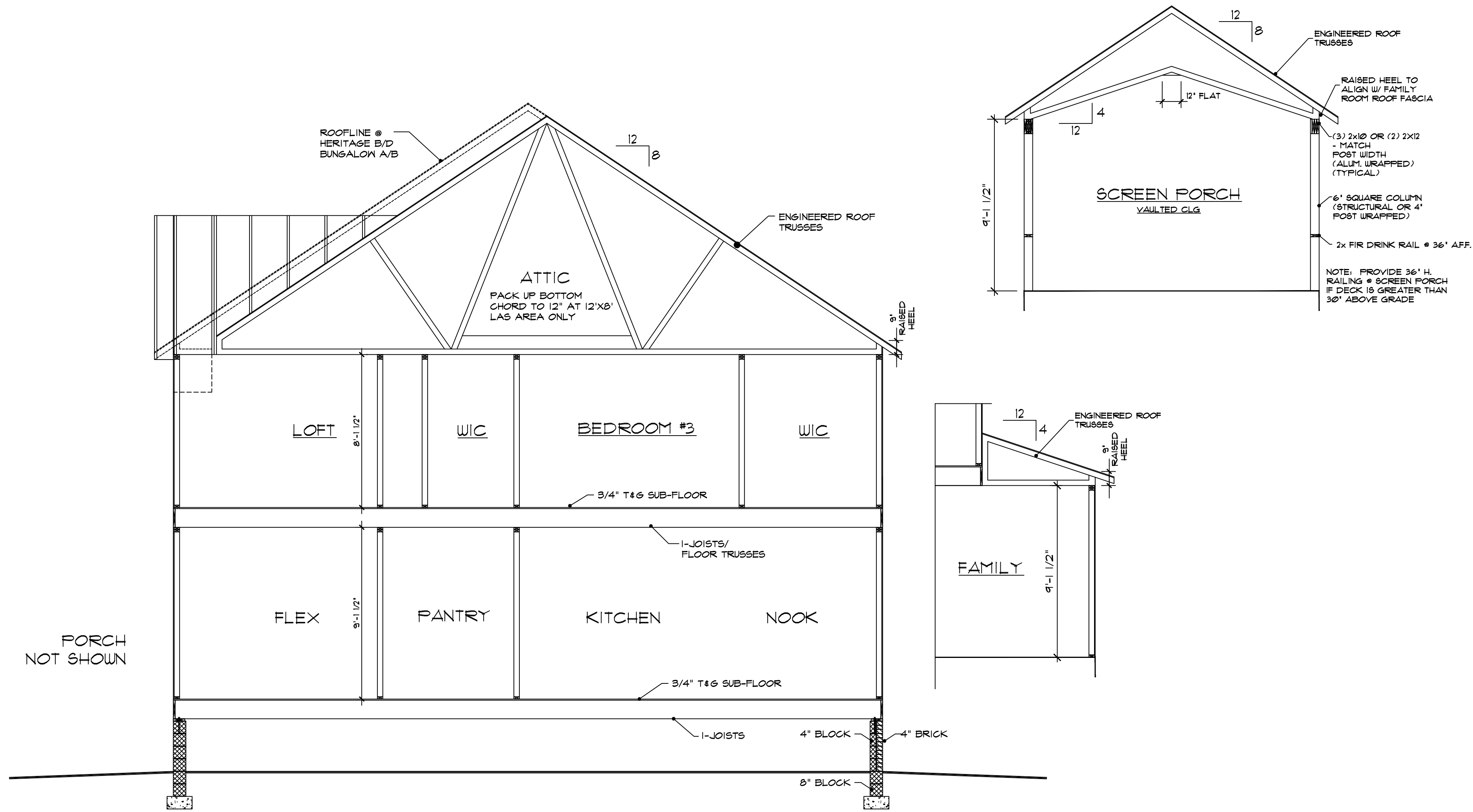
MA - 16
CHATHAM - FA

842 MAGNOLIA ACRES
FUQUAY-VARINA, NC 27526

Revisions:

Scale: 1/4"=1'
Drawn By: TAL
Checked By: MFR
Date: 1/27/2025

A-5b
FA-SL



1
A-7
TYPICAL HOUSE SECTION
1/4" = 1'-0"
CRAWL SPACE

COPYRIGHT 2025 HHHUNT HOMES ALL RIGHTS PROTECTED REPRODUCTION PROHIBITED
Purchaser understands that the plan is not precisely to scale and the dimensions shown therein are also not precise.
Purchaser agrees that it is in HHHunt Homes' sole discretion to deviate from the plans and specifications, provided the improvements as built are in substantial compliance with the approved plans.

Revisions:	
Scale:	1/4"=1'
Drawn By:	TAL
Checked By:	MFR
Date:	1/27/2025

842 MAGNOLIA ACRES
FUQUAY-VARINA, NC 27526

MA - 16
CHATHAM - FA

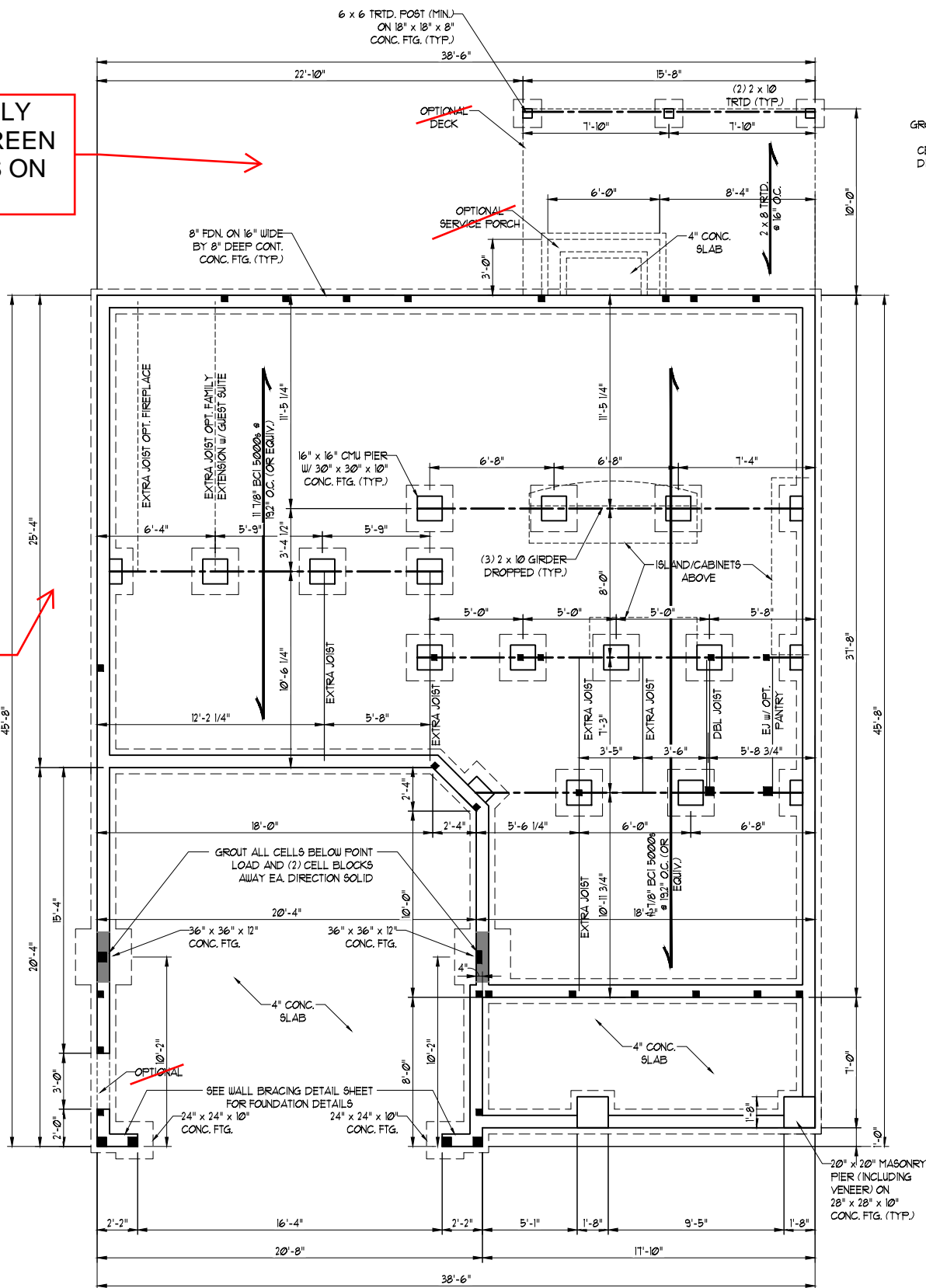
HHHunt Homes
11237 Nuckols Road
Glen Allen, Va. 23059
(804) 762-4667



A-7

NOTE: SEE FAMILY
EXTENSION/SCREEN
PORCH DETAILS ON
SHEET S-1.1d

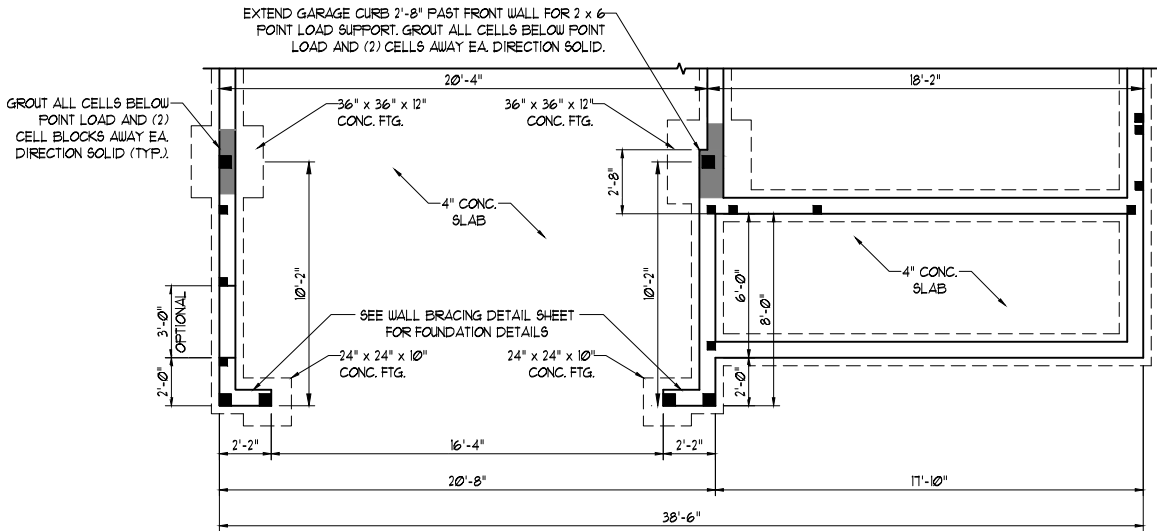
NOTE: SEE THIRD
CAR GARAGE
DETAILS ON SHEET
S-1.1c



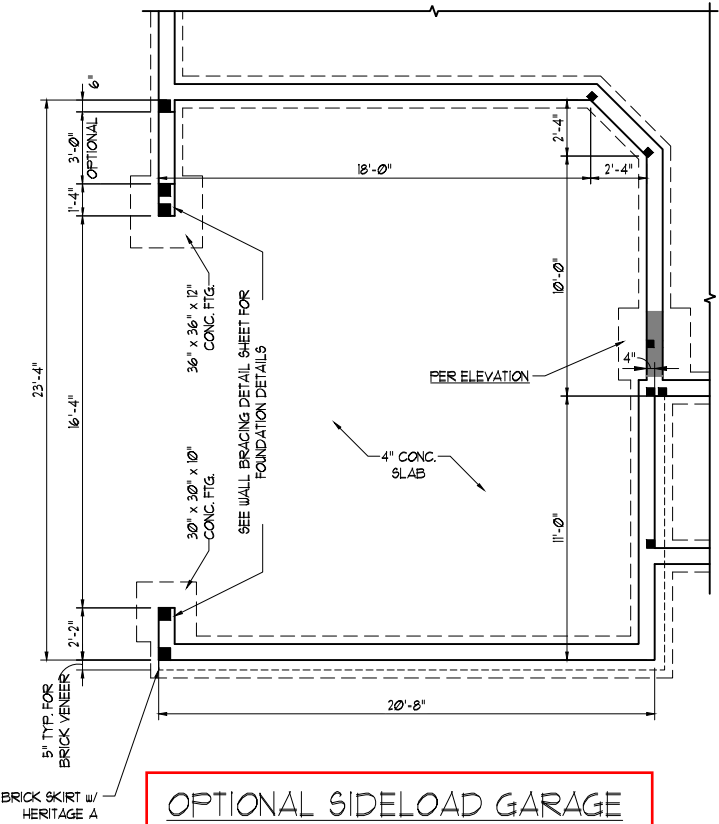
NOTE: SEE
ELEVATION DETAILS
ON SHEET S-1.1b

BUNGALOW A

SCALE NOTE:
LARGE FORMAT PRINTS ARE TO SCALE AS NOTED.
11" x 17" PRINTS ARE ONE HALF THE NOTED SCALE



FARMHOUSE A



OPTIONAL SIDELOAD GARAGE

BUNGALOW A, EUROPEAN B, FARMHOUSE A, HERITAGE A ONLY

(NOTE: GARAGE FRONT EXTENDS 3'-0"
FROM STANDARD FRONT LOAD LOCATION)

J.S. THOMPSON
ENGINEERING, INC.
606 WADE AVE, SUITE 104 RALEIGH, NC 27605
PHONE: (919) 789-9919 FAX: (919) 789-9921
N.C. LICENSE NO. C-1733

CHATHAM
HH HUNT HOMES

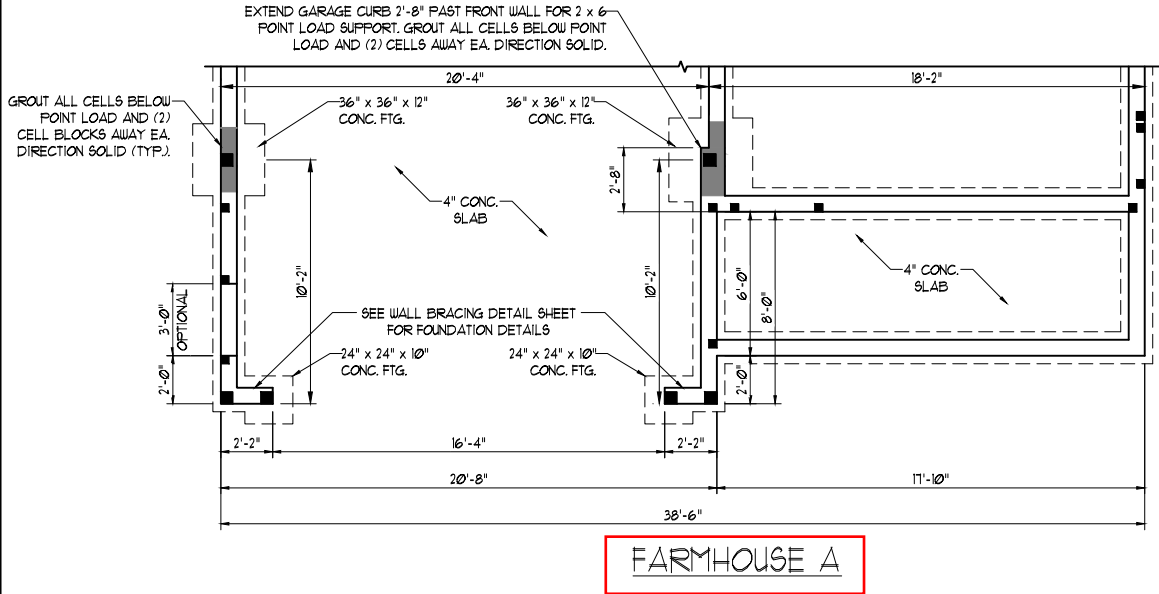
DATE: DECEMBER 23, 2024
SCALE: 1/4" = 1'-0"
DRAWN BY: HH HUNT HOMES
ENGINEERED BY: WFB

SHEET: 1 OF: 42
S-1.1a
CRAWL
FOUNDATION PLAN

SCALE NOTE:
LARGE FORMAT PRINTS ARE TO SCALE AS NOTED.
11" x 17" PRINTS ARE ONE HALF THE NOTED SCALE



12/26/2024



J.S. THOMPSON
ENGINEERING, INC
606 WADE AVE., SUITE 104 RALEIGH, NC 27605
PHONE: (919) 789-9919 FAX: (919) 789-9921
N.C. LICENSE NO. C-1733

CHATHAM
HH HUNT HOMES

DATE: DECEMBER 23, 2024
SCALE: 1/4" = 1'-0"
DRAWN BY: HH HUNT HOMES
ENGINEERED BY: WFB

SHEET: 2 OF: 42
S-1.1b
CRAWL
FOUNDATION PLAN

SCALE NOTE:
LARGE FORMAT PRINTS ARE TO SCALE AS NOTED.
11" x 17" PRINTS ARE ONE HALF THE NOTED SCALE

J.S. THOMPSON
ENGINEERING, INC
606 WADE AVE., SUITE 104 RALEIGH, NC 27605
PHONE: (919) 789-9919 FAX: (919) 789-9921
N.C. LICENSE NO. C-1733

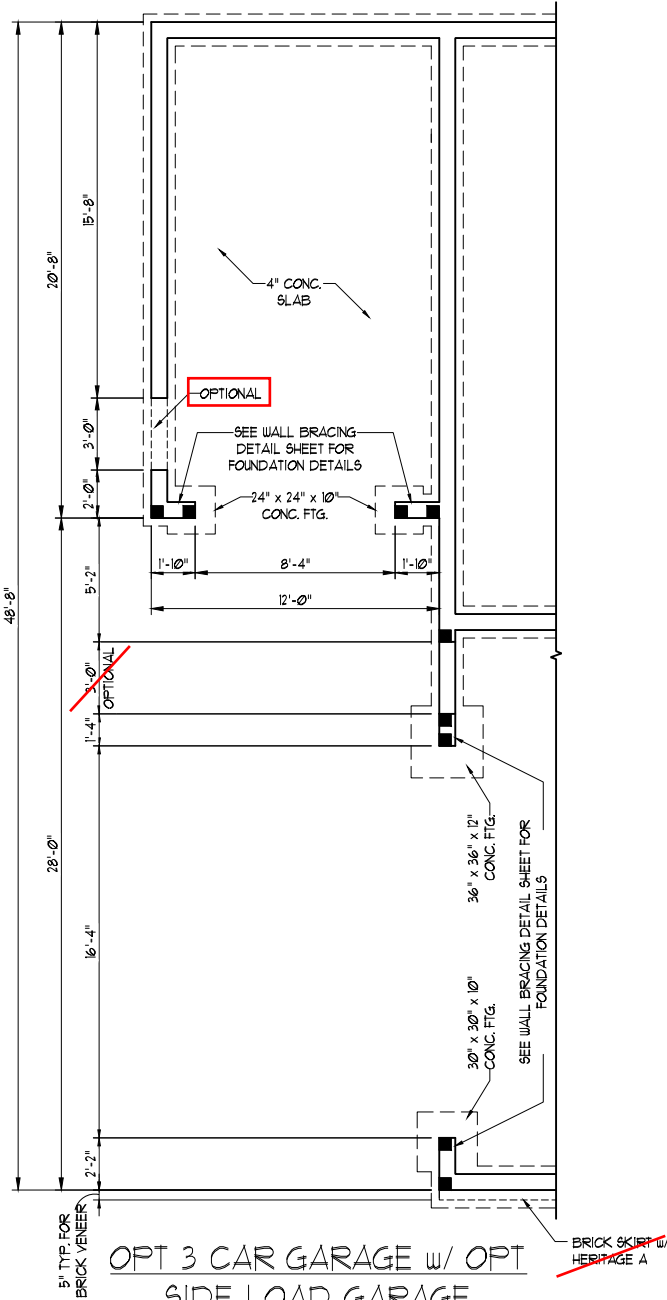
CHATHAM
HH HUNT HOMES

DATE: DECEMBER 23, 2024
SCALE: 1/4" = 1'-0"
DRAWN BY: HH HUNT HOMES
ENGINEERED BY: WFB

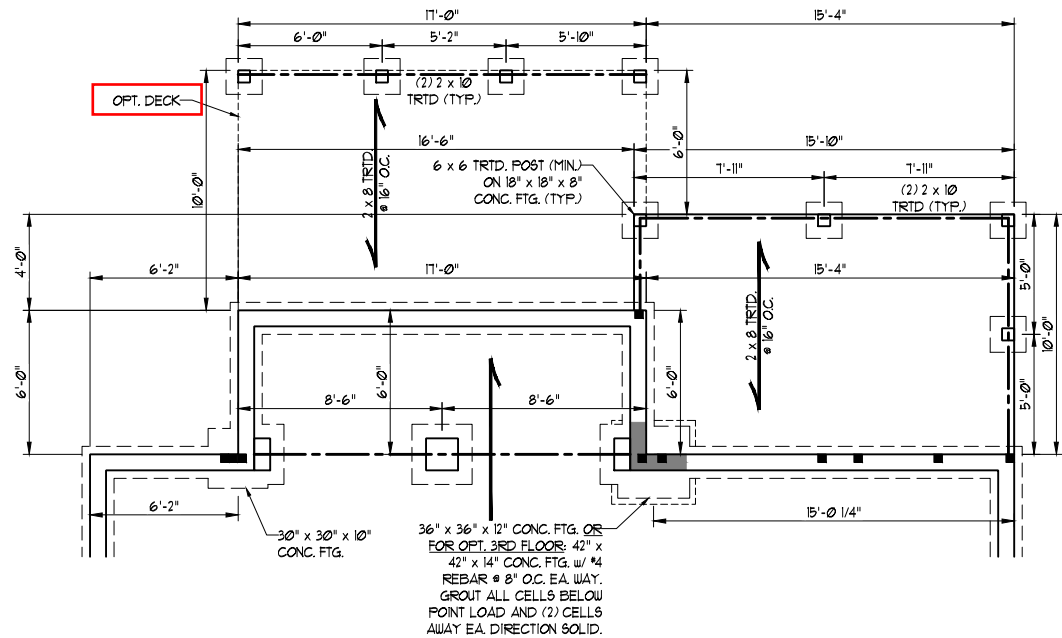
SHEET: 3 OF: 42
S-1.1c
CRAWL
FOUNDATION PLAN



12/26/2024



OPT 3 CAR GARAGE w/ OPT
SIDE LOAD GARAGE
BUNGALOW A, EUROPEAN B, FARMHOUSE A, HERITAGE A ONLY
(NOTE: GARAGE FRONT EXTENDS 3'-0"
FROM STANDARD FRONT LOAD LOCATION)



OPTIONAL FAMILY EXTENSION/GUEST SUITE W/ BATH
(W/ OPT SCREEN PORCH)

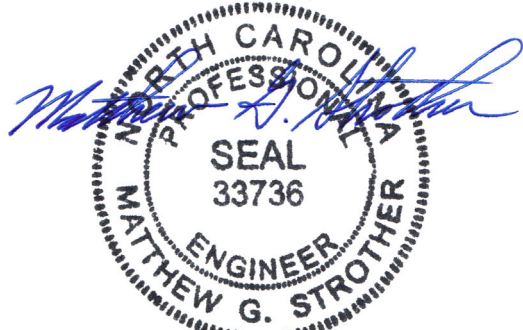
SCALE NOTE:
LARGE FORMAT PRINTS ARE TO SCALE AS NOTED.
11" x 17" PRINTS ARE ONE HALF THE NOTED SCALE

J.S. THOMPSON
ENGINEERING, INC
606 WADE AVE, SUITE 104 RALEIGH, NC 27605
PHONE: (919) 789-9919 FAX: (919) 789-9921
N.C. LICENSE NO. C-1733

CHATHAM
HH HUNT HOMES

DATE: DECEMBER 23, 2024
SCALE: 1/4" = 1'-0"
DRAWN BY: HH HUNT HOMES
ENGINEERED BY: WFB

SHEET: 4 OF: 42
S-1.1d
CRAWL
FOUNDATION PLAN



12/26/2024

[illegible]

LEGEND	
CONT	CONTINUOUS
XT	EXTRA TRUSS
XJ	EXTRA JOIST
DJ	DOUBLE JOIST
TJ	TRIPLE JOIST
EA	EACH
()	NUMBER OF STUDS
DSP	DOUBLE STUD POCKET
TSP	TRIPLE STUD POCKET
OC	ON CENTER
SPF	SPRUCE PINE FIR
SYF	SOUTHERN YELLOW PINE
TRTD	PRESSURE TREATED
TYF	TYPICAL
UNO	UNLESS NOTED OTHERWISE

SCALE NOTE:
LARGE FORMAT PRINTS ARE TO SCALE AS NOTED.
11" x 17" PRINTS ARE ONE HALF THE NOTED SCALE.

1. WALL BRACING IS BY ENGINEERED DESIGN PER SECTION R301.1.3 "ENGINEERED DESIGN" OF THE NCRC 2024 EDITION USING BRACING MATERIALS AND METHODS LISTED IN TABLE R602.10.4 along WITH ALTERNATIVE MATERIALS AND METHODS THAT COMPLY WITH ACCEPTED ENGINEERING PRACTICE. BRACED WALL DESIGN IS NOT PRESCRIPTIVE.
2. SHEATH ALL EXTERIOR WALLS w/ 7/16" OSB TO PROVIDE CS-WSP WALL BRACING THAT WILL BRACE THE STRUCTURE FOR ALL LATERAL LOADS AS REQUIRED BY THE NCRC 2024 EDITION.
3. CS-WSP REFERS TO "CONTINUOUSLY SHEATHED WOOD STRUCTURAL PANELS". CONTRACTOR IS TO INSTALL 7/16" OSB ON ALL EXTERIOR WALLS WITH HORIZONTAL JOINTS BLOCKED. ATTACH SHEATHING w/ 8d NAILS SPACED 6" O.C. ALONG PANEL EDGES AND 12" O.C. IN THE FIELD INCLUDING TOP AND BOTTOM PLATES.
4. GB REFERS TO "GYPSUM BOARD". CONTRACTOR IS TO INSTALL 1/2" (MN) GYPSUM BOARD ON BOTH SIDES OF WALL (UNO) WHERE NOTED ON THE PLANS ATTACHED WITH 1 1/4" LONG #6 SCREWS OR 1 5/8" LONG SD COOLER NAILS SPACED 7" O.C. ALONG PANEL EDGES AND IN THE FIELD INCLUDING TOP AND BOTTOM PLATES. WHERE METHOD GB PANELS ARE INSTALLED HORIZONTALLY, BLOCKING OF HORIZONTAL JOINTS IS NOT REQUIRED.
5. BRACED WALL DESIGN APPLIED IN WIND ZONES UP TO 130 MPH. FOR HIGH WIND ZONES, BRACED WALLS ARE TO BE CONSTRUCTED IN ACCORDANCE WITH CHAPTER 45 OF THE NCRC 2024 EDITION.
6. SEE NOTES AND DETAIL SHEETS FOR ADDITIONAL BRACED WALL INFORMATION.

1. ALL FRAMING LUMBER TO BE SPF #2 (UNO). ALL TREATED LUMBER TO BE SPY #2 (UNO.)
2. ALL LOAD BEARING HEADERS TO BE (2) 2 x 6 SPF #2 OR SYP #2 (KILN DRIED) (UNO). HEADERS HAVE BEEN DESIGNED BASED ON CALCULATED LOADS. CODE TABLES HAVE NOT BEEN USED.
3. INSTALL AN EXTRA JOIST UNDER WALLS PARALLEL TO FLOOR JOISTS WHERE NOTED ON THE PLANS.
4. WINDOW AND DOOR HEADERS TO BE SUPPORTED w/ (1) JACK STUD AND (1) KING STUD EA. END (UNO.). SEE TABLE R602.7.5 FOR ADDITIONAL KING STUD REQUIREMENTS.
4. SQUARES DENOTE POINT LOADS WHICH REQUIRE SOLID BLOCKING TO ORDER OR FOUNDATION. ALL SQUARES TO BE (2) STUDS (UNO.)
6. ALL 4 x 4 POSTS SHALL BE ANCHORED TO SLABS w/ SIMPSON ABU44 POST BASES (OR EQUAL) AND 6 x 6 POSTS w/ ABUE6 POST BASES (OR EQUAL) (UNO). ALL 4 x 4 AND 6 x 6 POSTS TO BE INSTALLED WITH 700 LB CAPACITY UPLIFT CONNECTORS AT TOP (UNO.)
7. FOR FIBERGLASS, ALUMINUM, OR COLUMN ENG. BY OTHERS, SECURE TO SLAB w/ (2) METAL ANGLES USING 2" CONC. SCREWS. FASTEN ANGLES TO COLUMNS w/ 1/4" THROUGH BOLTS w/ NUTS AND WASHERS. LOCATE ANGLES ON OPPOSITE SIDES OF COLUMN. THROUGH BOLTS MUST BE INSTALLED PRIOR TO SETTING COLUMN.
8. REFER TO NOTES AND DETAIL SHEETS FOR ADDITIONAL STRUCTURAL INFORMATION.

- TJI 210 JOISTS MAY BE USED IN LIEU OF BCI 5000s-1.8 JOISTS AT THE DEPTH AND SPACING NOTED ON THE PLAN.
- SEE SHEET D-1 FOR FLOOR TRUSS ALTERNATIVE.

J.S. THOMPSON
ENGINEERING, INC.
605 WADE AVE., SUITE 104 RALEIGH, NC 27605
PHONE: (919) 789-9919 FAX: (919) 789-9921
N.C. LICENSE NO.: C-1733

CHATHAM
HUNT HOMES

ENGINEERED BY: WFB

S-3a
SECOND FLOOR
FRAMING PLAN

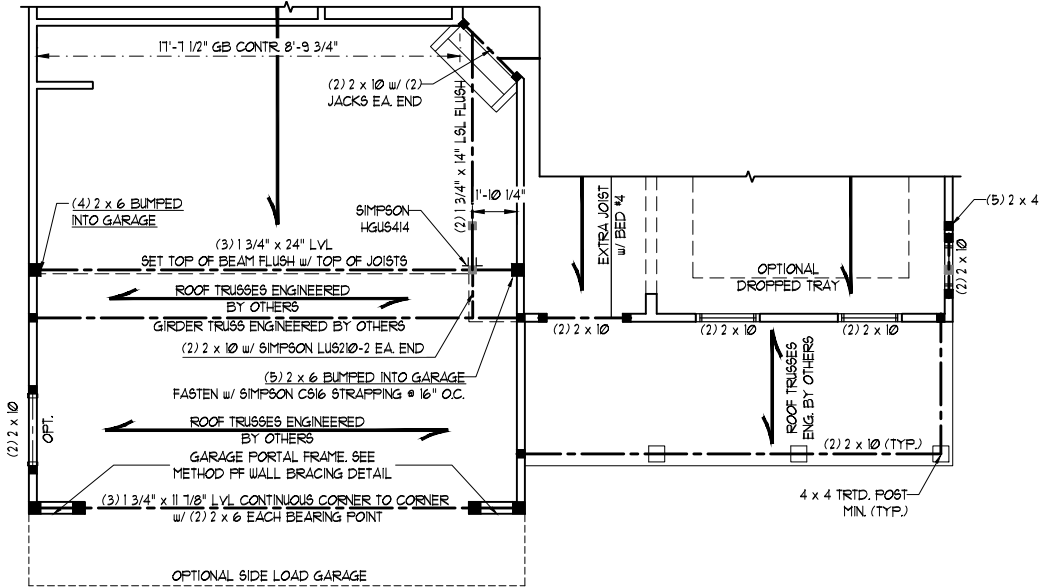
SCALE NOTE:
LARGE FORMAT PRINTS ARE TO SCALE AS NOTED.
11" x 17" PRINTS ARE ONE HALF THE NOTED SCALE

J.S. THOMPSON
ENGINEERING, INC
606 WADE AVE., SUITE 104 RALEIGH, NC 27605
PHONE: (919) 789-9919 FAX: (919) 789-9921
N.C. LICENSE NO. C-1733

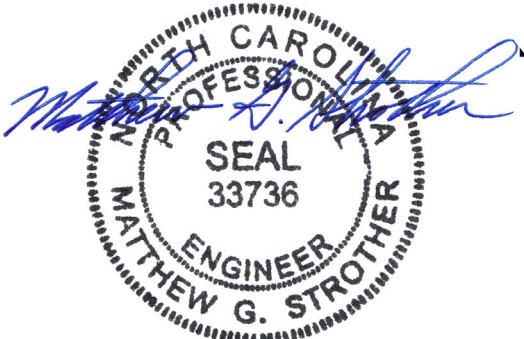
CHATHAM
HH HUNT HOMES

DATE: DECEMBER 23, 2024
SCALE: 1/4" = 1'-0"
DRAWN BY: HH HUNT HOMES
ENGINEERED BY: WFB

SHEET: 27 OF: 42
S-3b
SECOND FLOOR
FRAMING PLAN



FARMHOUSE A



12/26/2024

SCALE NOTE:
LARGE FORMAT PRINTS ARE TO SCALE AS NOTED.
11" x 17" PRINTS ARE ONE HALF THE NOTED SCALE

J.S. THOMPSON
ENGINEERING, INC
606 WADE AVE, SUITE 104 RALEIGH, NC 27605
PHONE: (919) 789-9919 FAX: (919) 789-9921
N.C. LICENSE NO. C-1733

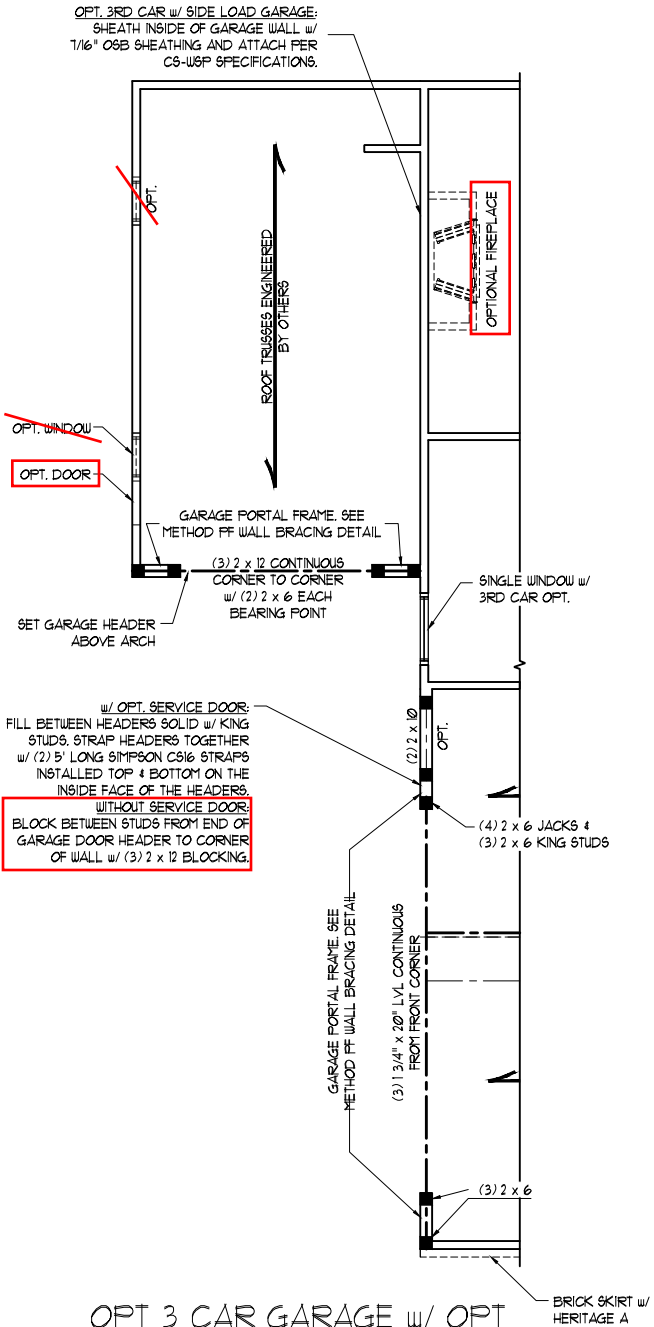
CHATHAM
HH HUNT HOMES

DATE: DECEMBER 23, 2024
SCALE: 1/4" = 1'-0"
DRAWN BY: HH HUNT HOMES
ENGINEERED BY: WFB

SHEET: 28 OF: 42
S-3c
SECOND FLOOR
FRAMING PLAN



12/26/2024

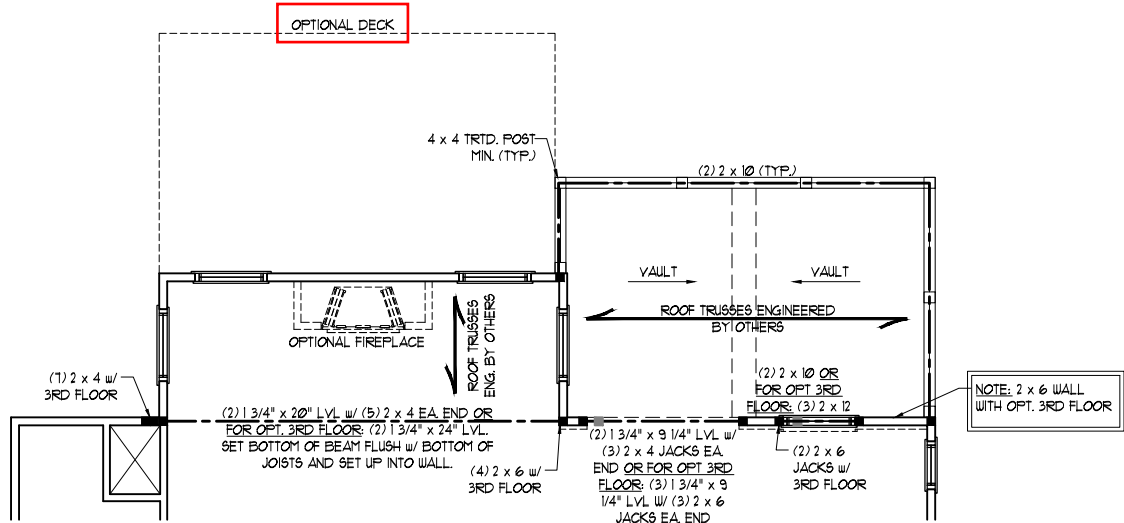


OPT 3 CAR GARAGE w/ OPT
SIDE LOAD GARAGE

BUNGALOW A, EUROPEAN B, FARMHOUSE A, HERITAGE A ONLY

(NOTE: GARAGE FRONT EXTENDS 3'-0"
FROM STANDARD FRONT LOAD LOCATION)

SCALE NOTE:
LARGE FORMAT PRINTS ARE TO SCALE AS NOTED.
11" x 17" PRINTS ARE ONE HALF THE NOTED SCALE



OPTIONAL FAMILY EXTENSION/GUEST SUITE W/ BATH
(W/ OPT SCREEN PORCH)



12/26/2024

**J.S. THOMPSON
ENGINEERING, INC**
606 WADE AVE, SUITE 104 RALEIGH, NC 27605
PHONE: (919) 789-9919 FAX: (919) 789-9921
N.C. LICENSE NO. C-1733

CHATHAM
HH HUNT HOMES

DATE: DECEMBER 23, 2024
SCALE: 1/4" = 1'-0"
DRAWN BY: HH HUNT HOMES
ENGINEERED BY: WFB

J.S. THOMPSON
ENGINEERING, INC.
606 WADE AVE., SUITE 104 RALEIGH, NC 27605
PHONE: (919) 789-0919 FAX: (919) 789-9921
N.C. LICENSE NO. C-1733

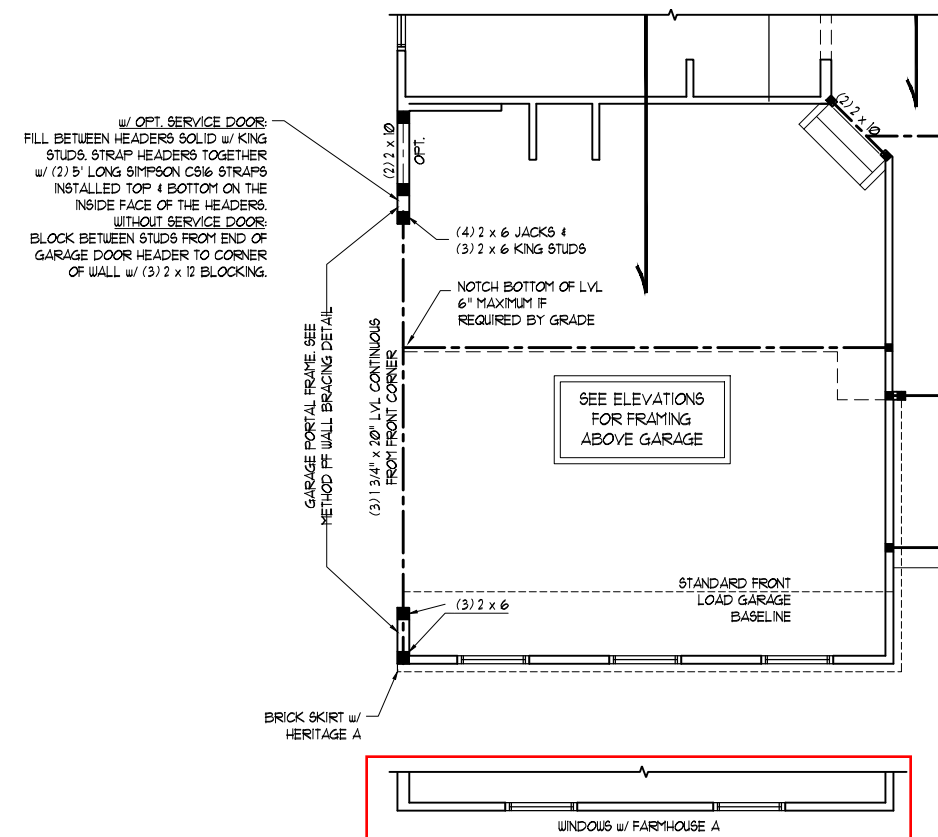
CHATHAM
HH HUNT HOMES

DATE: DECEMBER 23, 2024
SCALE: 1/4" = 1'-0"
DRAWN BY: HH HUNT HOMES
ENGINEERED BY: WFB

SHEET: 30 OF: 42

S-3e

SECOND FLOOR
FRAMING PLAN



OPTIONAL SIDELOAD GARAGE

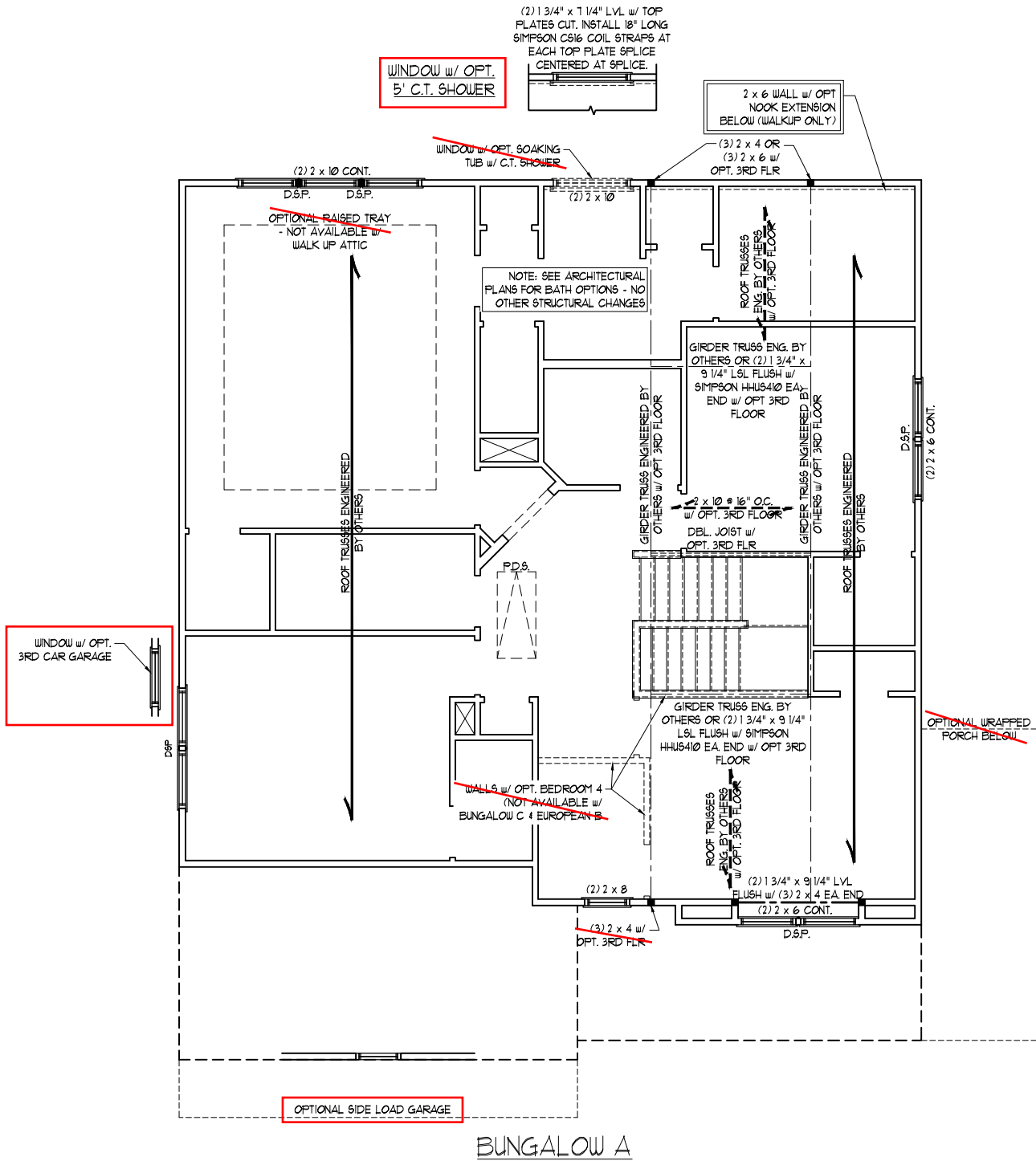
BUNGALOW A, EUROPEAN B, FARMHOUSE A, HERITAGE A ONLY

(NOTE: GARAGE FRONT EXTENDS 3'-0"
FROM STANDARD FRONT LOAD LOCATION)



12/26/2024

SCALE NOTE:
LARGE FORMAT PRINTS ARE TO SCALE AS NOTED.
11" x 17" PRINTS ARE ONE HALF THE NOTED SCALE



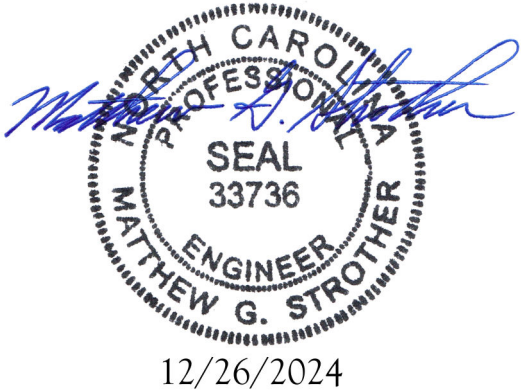
LEGEND	
CONT	CONTINUOUS
XT	EXTRA TRUSS
XJ	EXTRA JOIST
DJ	DOUBLE JOIST
TJ	TRIPLE JOIST
EA	EACH
()	NUMBER OF STUDS
DSP	DOUBLE STUD POCKET
TSP	TRIPLE STUD POCKET
OC	ON CENTER
SPF	SPRUCE PINE FIR
SYP	SOUTHERN YELLOW PINE
TRTD	PRESSURE TREATED
TYP	TYPICAL
UNO	UNLESS NOTED OTHERWISE

- BRACED WALL DESIGN NOTES:
- WALL BRACING IS BY ENGINEERED DESIGN PER SECTION R301.1.3 "ENGINEERED DESIGN" OF THE NCRC 2024 EDITION USING BRACING MATERIALS AND METHODS LISTED IN TABLE R602.10.4 ALONG WITH ALTERNATIVE MATERIALS AND METHODS THAT COMPLY WITH ACCEPTED ENGINEERING PRACTICE. BRACED WALL DESIGN IS NOT PRESCRIPTIVE.
 - SHEATH ALL EXTERIOR WALLS w/ 7/16" OSB TO PROVIDE CS-WSP WALL BRACING THAT WILL BRACE THE STRUCTURE FOR ALL LATERAL LOADS AS REQUIRED BY THE NCRC 2024 EDITION.
 - CS-WSP REFERS TO "CONTINUOUSLY SHEATHED WOOD STRUCTURAL PANELS." CONTRACTOR IS TO INSTALL 7/16" OSB ON ALL EXTERIOR WALLS WITH HORIZONTAL JOINTS BLOCKED. ATTACH SHEATHING w/ 8d NAILS SPACED 6" O.C. ALONG PANEL EDGES AND 12" O.C. IN THE FIELD INCLUDING TOP AND BOTTOM PLATES.
 - GB REFERS TO "GYPSUM BOARD." CONTRACTOR IS TO INSTALL 1/2" (MIN.) GYPSUM BOARD ON BOTH SIDES OF WALL (UNO) WHERE NOTED ON THE PLANS ATTACHED WITH 1 1/4" LONG #6 SCREWS OR 1 5/8" LONG 5d COOLER NAILS SPACED 7" O.C. ALONG PANEL EDGES AND IN THE FIELD INCLUDING TOP AND BOTTOM PLATES. WHERE METHOD GB PANELS ARE INSTALLED HORIZONTALLY, BLOCKING OF HORIZONTAL JOINTS IS NOT REQUIRED.
 - BRACED WALL DESIGN APPLIED IN WIND ZONES UP TO 130 MPH. FOR HIGH WIND ZONES, BRACED WALLS ARE TO BE CONSTRUCTED IN ACCORDANCE WITH CHAPTER 45 OF THE NCRC 2024 EDITION.
 - SEE NOTES AND DETAIL SHEETS FOR ADDITIONAL BRACED WALL INFORMATION.

TABLE R602.7.5
MINIMUM NUMBER OF FULL HEIGHT KING STUDS
AT EACH END OF HEADERS IN EXTERIOR
WALLS IN 120/130 MPH WIND ZONES

HEADER SPAN (FEET)	MINIMUM NUMBER OF FULL HEIGHT STUDS (KINGS)
UP TO 4'	1
> 4' TO 8'	2
> 8' TO 14'	3
> 14' TO 18'	4

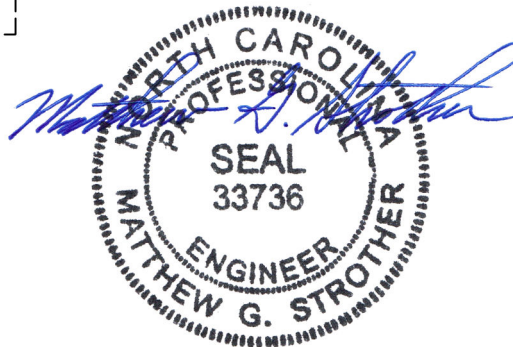
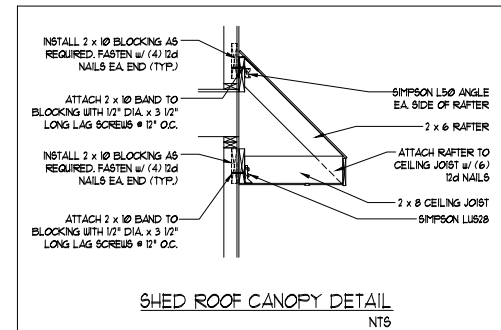
- STRUCTURAL NOTES:
- ALL FRAMING LUMBER TO BE #2 SPF (UNO).
 - ALL LOAD BEARING HEADERS TO BE (2) 2 x 6 (UNO).
 - WINDOW AND DOOR HEADERS TO BE SUPPORTED w/ (1) JACK STUD AND (1) KING STUD EA. END (UNO.). SEE TABLE R602.7.5 FOR ADDITIONAL KING STUD REQUIREMENTS.
 - ALL 4 x 4 AND 6 x 6 POSTS TO BE INSTALLED WITH 700 LB CAPACITY UPLIFT CONNECTORS TOP AND BOTTOM (UNO.).
 - SQUARES DENOTE POINT LOADS WHICH REQUIRE SOLID BLOCKING TO GIRDER OR FOUNDATION. SQUARES TO BE (2) STUDS (UNO.).
 - REFER TO NOTES AND DETAIL SHEETS FOR ADDITIONAL STRUCTURAL INFORMATION.



J.S. THOMPSON
ENGINEERING, INC
606 WADE AVE, SUITE 104 RALEIGH, NC 27605
PHONE: (919) 789-9919 FAX: (919) 789-9921
N.C. LICENSE NO. C-1733

CHATHAM
HH HUNT HOMES

DATE: DECEMBER 23, 2024
SCALE: 1/4" = 1'-0"
DRAWN BY: HH HUNT HOMES
ENGINEERED BY: WFB



12/26/2024

J.S. THOMPSON
ENGINEERING, INC.
606 WADE AVE., SUITE 104 RALEIGH, NC 27605
PHONE: (919) 789-9919 FAX: (919) 789-9921
N.C. LICENSE NO. C-1733

CHATHAM
HH HUNT HOMES

DATE: DECEMBER 23, 2024
SCALE: 1/4" = 1'-0"
DRAWN BY: HH HUNT HOMES
ENGINEERED BY: WFB

SHEET: 32 OF: 42

S-4b

ATTIC FLOOR
FRAMING PLAN

SCALE NOTE:
LARGE FORMAT PRINTS ARE TO SCALE AS NOTED.
11" x 17" PRINTS ARE ONE HALF THE NOTED SCALE

- STRUCTURAL NOTES:
1. ALL FRAMING LUMBER TO BE #2 SPF (UNO).
 2. CIRCLES DENOTE (3) 2 x 4 POSTS FOR ROOF SUPPORT.
 3. FRAME DORMER WALLS ON TOP OF DOUBLE OR TRIPLE RAFTERS.
 4. HIP SPLICES ARE TO BE SPACED A MIN. OF 8'-0". FASTEN MEMBERS WITH THREE ROWS OF 12d NAILS @ 16" O.C. (TYP.)
 5. STICK FRAME OVER-FRAMED ROOF SECTIONS W/ 2 x 8 RIDGES, 2 x 6 RAFTERS @ 16" O.C. AND FLAT 2 x 10 VALLEYS OR USE VALLEY TRUSSES.
 6. FASTEN FLAT VALLEYS TO RAFTERS OR TRUSSES WITH SIMPSON H2.5A HURRICANE TIES @ 32" O.C. MAX. PASS HURRICANE TIES THROUGH NOTCH IN ROOF SHEATHING. EACH RAFTER IS TO BE FASTENED TO THE FLAT VALLEY WITH A MIN. OF (6) 12d TOE NAILS.
 7. REFER TO SECTION R802.11 OF THE 2024 NRC FOR REQUIRED UPLIFT RESISTANCE AT RAFTERS AND TRUSSES.
 8. REFER TO NOTES AND DETAIL SHEETS FOR ADDITIONAL STRUCTURAL INFORMATION.

NOTE: REFER TO ARCHITECTURAL DRAWINGS FOR ROOF PITCHES, PLATE HEIGHTS, DIMENSIONS, OVERHANG WIDTHS, AND ATTIC VENT CALCS.

LEGEND	
XR	EXTRA RAFTER
XT	EXTRA TRUSS
DR	DOUBLE RAFTER
TR	TRIPLE RAFTER
RS	RAFTER SUPPORT
TS	TRUSS SUPPORT
CONT	CONTINUOUS
EA	EACH
OC	ON CENTER
SPF	SPRUCE PINE FIR
SYP	SOUTHERN YELLOW PINE
TYP	TYPICAL
UNO	UNLESS NOTED OTHERWISE

J.S. THOMPSON
ENGINEERING, INC
606 WADE AVE, SUITE 104 RALEIGH, NC 27605
PHONE: (919) 789-9919 FAX: (919) 789-9921
N.C. LICENSE NO. C-1733

CHATHAM
HH HUNT HOMES



12/26/2024

DATE: DECEMBER 23, 2024
SCALE: 1/4" = 1'-0"
DRAWN BY: HH HUNT HOMES
ENGINEERED BY: WFB

SHEET: 39 OF: 42
S-6f
ROOF FRAMING
PLAN

LOCATION OF OPTIONAL 3rd CAR GARAGE w/ OPT. SIDE LOAD GARAGE

ROOF TRUSSES ENGINEERED BY OTHERS

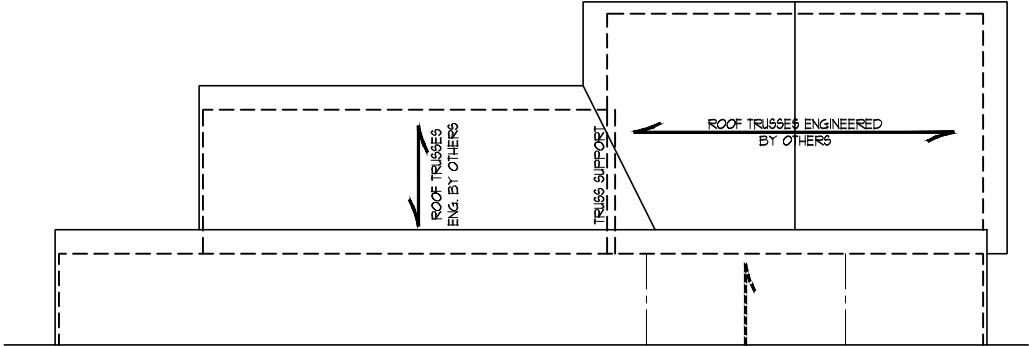
OPTIONAL 3rd CAR GARAGE

OPTIONAL SIDE LOAD GARAGE

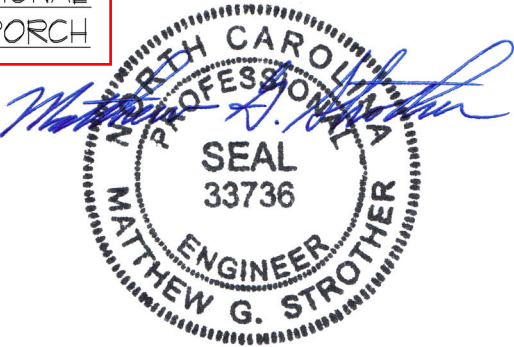
FARMHOUSE A

SCALE NOTE:
LARGE FORMAT PRINTS ARE TO SCALE AS NOTED.
11" x 17" PRINTS ARE ONE HALF THE NOTED SCALE

NOTE: REFER TO ARCHITECTURAL
DRAWINGS FOR ROOF PITCHES, PLATE
HEIGHTS, DIMENSIONS, OVERHANG
WIDTHS, AND ATTIC VENT CALCS.



OPTIONAL FAMILY EXTENSION w/ OPTIONAL
MORNING ROOM OR SCREEN PORCH



12/26/2024

J.S. THOMPSON
ENGINEERING, INC
606 WADE AVE., SUITE 104 RALEIGH, NC 27605
PHONE: (919) 789-9919 FAX: (919) 789-9921
N.C. LICENSE NO. C-1733

CHATHAM
HH HUNT HOMES

DATE: DECEMBER 23, 2024
SCALE: 1/4" = 1'-0"
DRAWN BY: HH HUNT HOMES
ENGINEERED BY: WFB

SHEET: 41 OF: 42
S-6h
ROOF FRAMING
PLAN

SCALE NOTE:
LARGE FORMAT PRINTS ARE TO SCALE AS NOTED.
11" x 17" PRINTS ARE ONE HALF THE NOTED SCALE

J.S. THOMPSON
ENGINEERING, INC
606 WADE AVE, SUITE 104 RALEIGH, NC 27605
PHONE: (919) 789-9919 FAX: (919) 789-9921
N.C. LICENSE NO. C-1733

CHATHAM
HH HUNT HOMES

DATE: DECEMBER 23, 2024
SCALE: 1/4" = 1'-0"
DRAWN BY: HH HUNT HOMES
ENGINEERED BY: WFB

SHEET: 42 OF: 42
D1
FLOOR TRUSS
ALTERNATIVE

FLOOR TRUSS ALTERNATIVE

PARALLEL WALL ABOVE

2 x 4 @ 16" O.C.
BLOCKING ATT. w/ (2)
12d TOE NAILS EA. END

FLOOR TRUSSES
AS SPECIFIED
(TYP.)

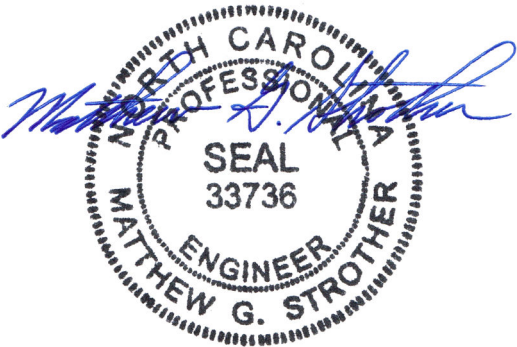
CONT. 2 x 4 SCAB ATT. TO
ALL TRUSS MEMBERS w/ (1)
ROW OF 12d NAILS @ 4" O.C.

TRUSS BLOCKING DETAIL

1. FLOOR TRUSSES ENGINEERED BY OTHERS AT THE DEPTH INDICATED ON THE PLAN SPACED AT 19.2" O.C. MAY BE USED IN LIEU OF I-JOISTS.

2. EXTRA TRUSSES ARE TO BE INSTALLED IN LIEU OF EXTRA JOISTS SPECIFIED UNDER THE KITCHEN.

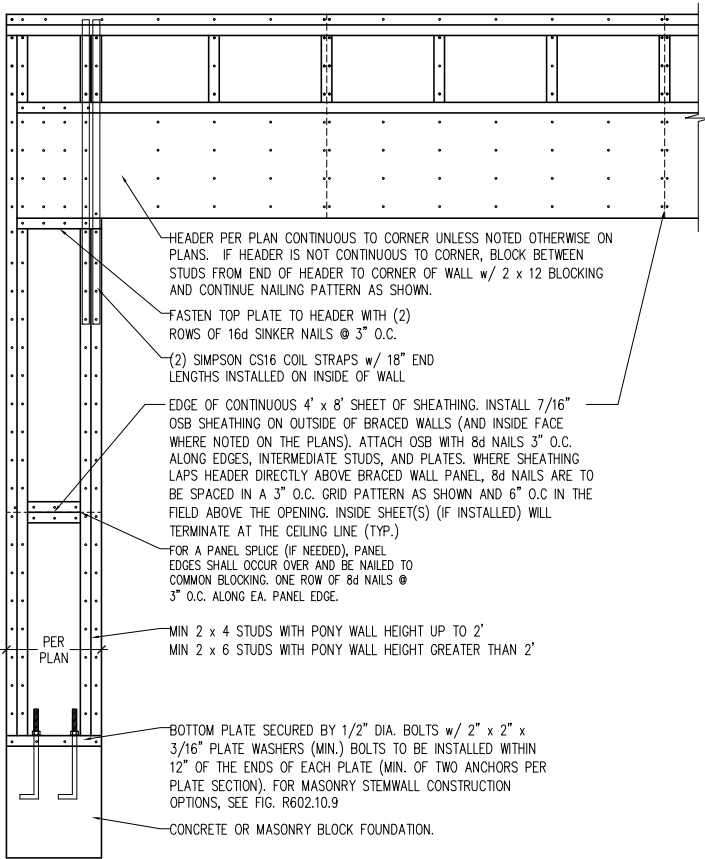
3. INSTALL 2 x 4 @ 16" O.C. BLOCKING BETWEEN ADJACENT TRUSSES UNDER WALLS PARALLEL TO FLOOR TRUSSES WHERE WALL LENGTH EXCEEDS 1/3 OF TRUSS SPAN (SEE DETAIL THIS SHEET). TRUSS DESIGNER TO DESIGN ADJACENT TRUSSES FOR ADDITIONAL LOADING FROM WALLS.



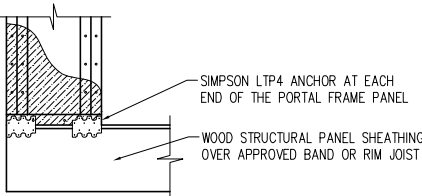
12/26/2024

GENERAL WALL BRACING NOTES:

1. WALL BRACING IS BY ENGINEERED DESIGN PER SECTION R301.1.3 "ENGINEERED DESIGN" OF THE NRC 2024 EDITION USING BRACING MATERIALS AND METHODS LISTED IN TABLE R602.10.4 ALONG WITH ALTERNATIVE MATERIALS AND METHODS THAT COMPLY WITH ACCEPTED ENGINEERING PRACTICE. BRACED WALL DESIGN IS NOT PRESCRIPTIVE.
2. SEE THIS SHEET FOR GENERAL DETAILS. REFER TO THE 2024 NRC FOR ADDITIONAL INFORMATION AS NEEDED.
3. BRACED EXTERIOR WALLS SUPPORTING ROOF TRUSSES AND RAFTERS, INCLUDING STORIES BELOW THE TOP FLOOR, HAVE BEEN DESIGNED PER R602.3.5 (3). WALL SHEATHING AND FASTENERS HAVE BEEN DESIGNED TO RESIST COMBINED UPLIFT AND SHEAR FORCES IN ACCORDANCE WITH ACCEPTED ENGINEERING PRACTICE.
4. SEE STRUCTURAL SHEETS FOR HOLD DOWN TYPE AND LOCATIONS WHERE REQUIRED AND ANY SPECIAL NOTES OR REQUIREMENTS.
5. ALL EXTERIOR WALLS ARE TO BE SHEATHED WITH CS-WSP IN ACCORDANCE WITH SECTION R602.10 UNLESS NOTED OTHERWISE.
6. ALL EXTERIOR AND INTERIOR WALLS TO HAVE 1/2" GYPSUM INSTALLED. WHEN NOT USING METHOD "GB", GYPSUM TO BE FASTENED PER TABLE R702.3.5. METHOD GB TO BE FASTENED PER TABLE R602.10.4.
7. CS-WSP REFERS TO THE "CONTINUOUS SHEATHING - WOOD STRUCTURAL PANELS" WALL BRACING METHOD. 7/16" OSB SHEATHING IS TO BE INSTALLED ON ALL EXTERIOR WALLS WITH JOINTS BLOCKED. ATTACH SHEATHING w/ 6d COMMON NAILS OR 8d (2 1/2" LONG x 0.113" DIAMETER) NAILS SPACED 6" O.C. ALONG PANEL EDGES AND 12" O.C. IN THE FIELD (U.N.O.).
8. GB REFERS TO THE "GYPSUM BOARD" WALL BRACING METHOD. 1/2" (MIN.) GYPSUM WALL BOARD IS TO BE INSTALLED ON BOTH SIDES OF THE BRACED WALL FASTENED WITH 1 1/4" SCREWS OR 1 5/8" NAILS SPACED 7" O.C. ALONG PANEL EDGES INCLUDING TOP AND BOTTOM PLATES AND INTERMEDIATE SUPPORTS (U.N.O.). VERIFY ALL FASTENER OPTIONS FOR 1/2" AND 5/8" GYPSUM PRIOR TO CONSTRUCTION. FOR INTERIOR FASTENER OPTIONS SEE TABLE R702.3.5. FOR EXTERIOR FASTENER OPTIONS SEE TABLE R602.3(1). WHERE METHOD GB PANELS ARE INSTALLED HORIZONTALLY, BLOCKING OF HORIZONTAL JOINTS IS NOT REQUIRED. EXTERIOR GB TO BE INSTALLED VERTICALLY.



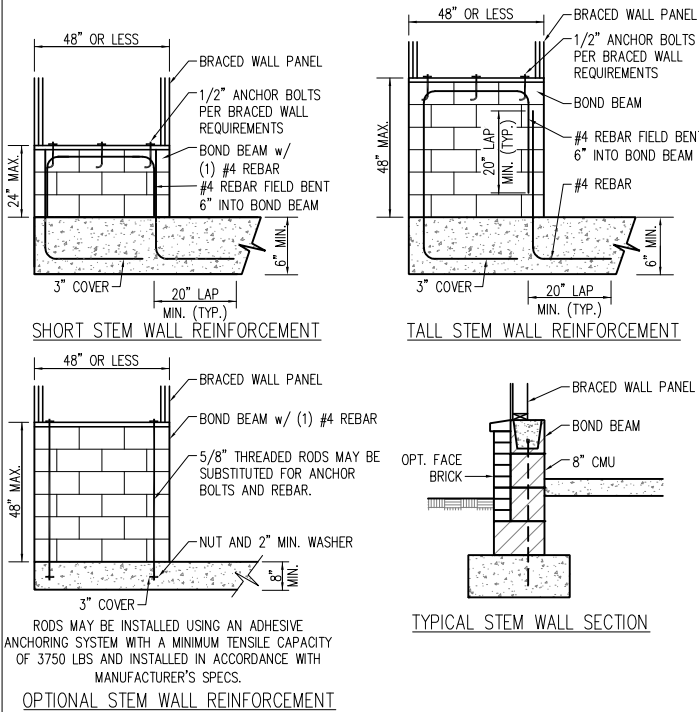
OVER CONCRETE OR MASONRY BLOCK FOUNDATION



OVER RAISED WOOD FLOOR - FRAMING ANCHOR OPTION

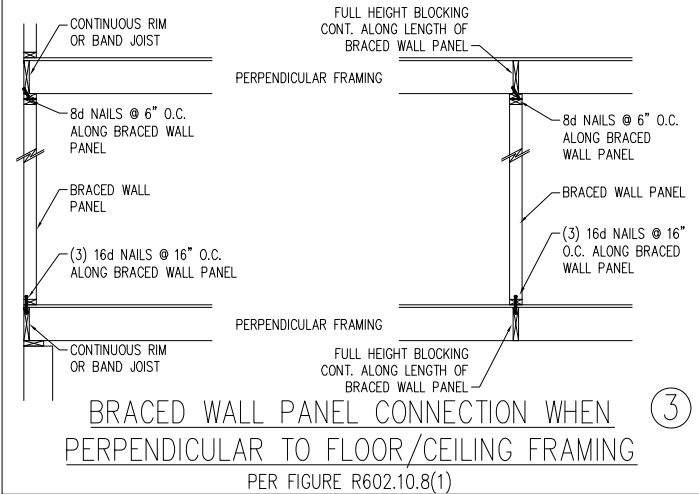
* APPLICABLE w/ GREATER THAN 12" KNEE WALL HEIGHTS IN CRAWL SPACE AND ABOVE FRAMED BASEMENT WALLS *

METHOD PF-PORTAL FRAME DETAIL ①

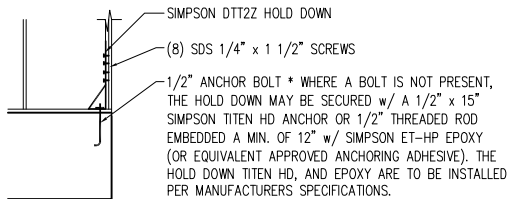


NOTE: GROUT BOND BEAMS AND ALL CELLS WHICH CONTAIN REBAR, THREADED RODS AND ANCHOR BOLTS

MASONRY STEM WALLS SUPPORTING BRACED WALL PANELS ②
PER FIGURE R602.10.9

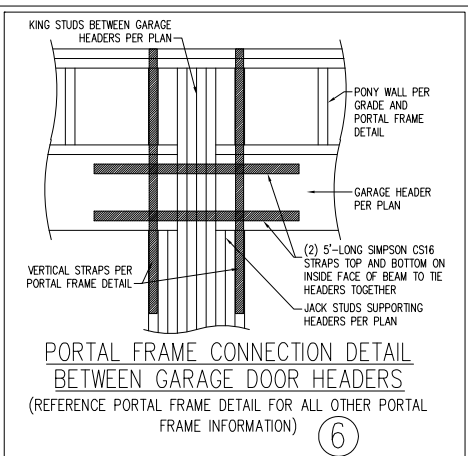
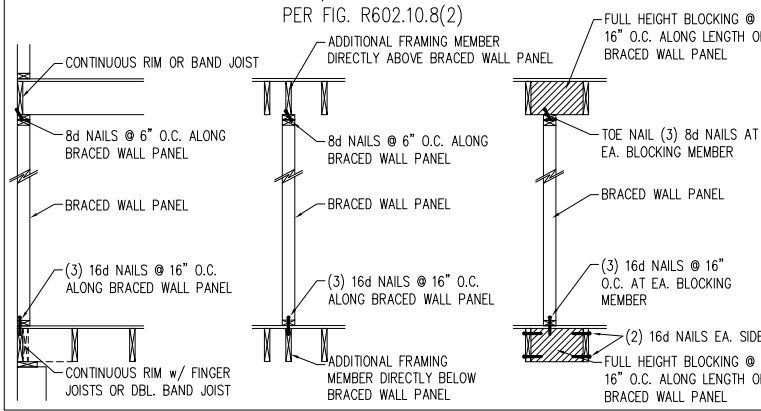


BRACED WALL PANEL CONNECTION WHEN PERPENDICULAR TO FLOOR/CEILING FRAMING ③
PER FIGURE R602.10.8(1)

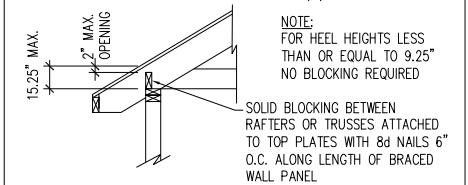


HOLD DOWN DETAIL FOR MASONRY FOUNDATION OR MONOLITHIC SLAB ④
* APPLICABLE ONLY WHERE SPECIFIED ON PLAN *

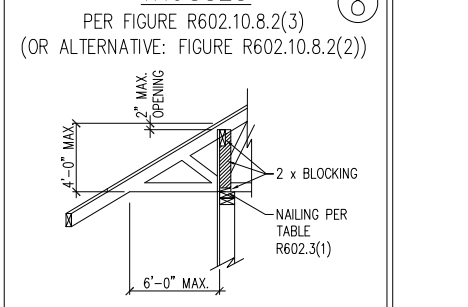
BRACED WALL PANEL CONNECTION WHEN PARALLEL TO FLOOR/CEILING FRAMING ⑤



BRACED WALL PANEL CONNECTION TO PERPENDICULAR RAFTERS ⑦
PER FIGURE R602.10.8.2(1)



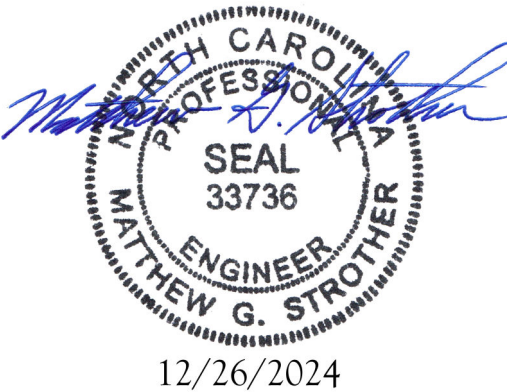
BRACED WALL PANEL CONNECTION TO PERPENDICULAR ROOF TRUSSES ⑧
PER FIGURE R602.10.8.2(3) (OR ALTERNATIVE: FIGURE R602.10.8.2(2))



This sealed page is to be used in conjunction with a full plan set engineered by J.S. Thompson Engineering, Inc. only. Use of this individual sealed page within architectural pages or shop drawings by others is a punishable offense under N.C. Statute § 89C-23

J.S. THOMPSON
ENGINEERING, INC.
333 EAST SIX FORKS ROAD, SUITE 180 RALEIGH, NC 27609
PHONE: (919) 789-9919 FAX: (919) 789-9921
N.C. LICENSE NO.: C1733

WALL BRACING NOTES AND DETAILS



DATE: NOVEMBER 1, 2024
SCALE: NOT TO SCALE
DRAWN BY: JST
ENGINEERED BY: JST

BRACED WALL NOTES AND DETAILS AND PORTAL FRAME DETAILS

SCALE NOTE:
LARGE FORMAT PRINTS ARE TO SCALE AS NOTED.
11" x 17" PRINTS ARE ONE HALF THE NOTED SCALE

GENERAL NOTES

- ENGINEER'S SEAL APPLIES ONLY TO STRUCTURAL COMPONENTS INCLUDING ROOF RAFTERS, HIPs, VALLEYS, RIDGES, FLOORS, WALLS, BEAMS, HEADERS, COLUMNS, CANTILEVERS, OFFSET LOAD BEARING WALLS, PIERS, GIRDER SYSTEM AND FOOTING. ENGINEER'S SEAL DOES NOT CERTIFY DIMENSIONAL ACCURACY OF ARCHITECTURAL LAYOUT INCLUDING ROOF. ENGINEER'S SEAL DOES NOT APPLY TO I-JOIST OR FLOOR/ROOF TRUSS LAYOUT DESIGN AND ACCURACY.
- ALL CONSTRUCTION SHALL CONFORM TO THE LATEST REQUIREMENTS OF THE NORTH CAROLINA RESIDENTIAL CODE (NRCR), 2024 EDITION, PLUS ALL LOCAL CODES AND REGULATIONS. THE STRUCTURAL ENGINEER IS NOT RESPONSIBLE FOR, AND WILL NOT HAVE CONTROL OF, CONSTRUCTION MEANS, METHODS, TECHNIQUES, SEQUENCES OR PROCEDURES, OR SAFETY PRECAUTIONS AND PROGRAMS IN CONNECTION WITH THE CONSTRUCTION WORK. NOR WILL THE ENGINEER BE RESPONSIBLE FOR THE CONTRACTORS FAILURE TO CARRY OUT THE CONSTRUCTION WORK IN ACCORDANCE WITH THE CONTRACT DOCUMENTS.
- STRUCTURAL DESIGN BASED ON THE PROVISIONS OF THE NRCR, 2024 EDITION (R301.4 – R301.7)

DESIGN CRITERIA:	LIVE LOAD (PSF)	DEAD LOAD (PSF)	DEFLECTION (IN)
ATTIC WITH LIMITED STORAGE	20	10	L/240 (L/360 w/ BRITTLE FINISHES)
ATTIC WITHOUT STORAGE	10	10	L/360
DECKS	40	10	L/360
EXTERIOR BALCONIES	40	10	L/360
FIRE ESCAPES	40	10	L/360
HANDRAILS/GUARDRAILS	200	10	L/360
PASSENGER VEHICLE GARAGE	50	10	L/360
ROOMS OTHER THAN SLEEPING ROOM	40	10	L/360
SLEEPING ROOMS	30	10	L/360
STAIRS	40	10	L/360
WIND LOAD	(BASED ON TABLE R301.2(4) WIND ZONE AND EXPOSURE)		
GROUND SNOW LOAD: Pg	20 (PSF)		
SEISMIC DESIGN CATEGORY:	B		

- I-JOIST SYSTEMS DESIGNED WITH 12 PSF DEAD LOAD AND DEFLECTION (IN) OF L/480
- FLOOR TRUSS SYSTEMS DESIGNED WITH 15 PSF DEAD LOAD

CLADDING DESIGNED FOR:

120 MPH WIND ZONE			
		POS. (PSF) PRESSURE	NEG. (PSF) PRESSURE
GABLE ROOF CLADDING	FLAT ROOF	+ 6.3	– 44.5
	2.25 TO 5/12	+ 9.6	– 49.8
	5 TO 7/12	+ 11.6	– 41.9
	7 TO 12/12	+ 14.2	– 35.3
HIP ROOF CLADDING	2.25 TO 5/12	+ 11.6	– 36.6
	5 TO 7/12	+ 11.6	– 28.7
	7 TO 12/12	+ 11.1	– 35.6
WALL CLADDING		+ 15.5	– 20.8

140 MPH WIND ZONE			
		POS. (PSF) PRESSURE	NEG. (PSF) PRESSURE
GABLE ROOF CLADDING	FLAT ROOF	+ 8.6	– 60.6
	2.25 TO 5/12	+ 13.1	– 67.8
	5 TO 7/12	+ 15.8	– 57
	7 TO 12/12	+ 19.4	– 48
HIP ROOF CLADDING	2.25 TO 5/12	+ 15.8	– 49.8
	5 TO 7/12	+ 15.8	– 39.1
	7 TO 12/12	+ 15.1	– 48.4
WALL CLADDING		+ 21.1	– 28.3

130 MPH WIND ZONE			
		POS. (PSF) PRESSURE	NEG. (PSF) PRESSURE
GABLE ROOF CLADDING	FLAT ROOF	+ 7.4	– 52.2
	2.25 TO 5/12	+ 11.3	– 58.4
	5 TO 7/12	+ 13.6	– 49.2
	7 TO 12/12	+ 16.7	– 41.4
HIP ROOF CLADDING	2.25 TO 5/12	+ 13.6	– 43
	5 TO 7/12	+ 13.6	– 33.7
	7 TO 12/12	+ 13	– 41.7
WALL CLADDING		+ 18.2	– 24.4

150 MPH WIND ZONE			
		POS. (PSF) PRESSURE	NEG. (PSF) PRESSURE
GABLE ROOF CLADDING	FLAT ROOF	+ 9.9	– 69.6
	2.25 TO 5/12	+ 15	– 77.8
	5 TO 7/12	+ 18.1	– 65.4
	7 TO 12/12	+ 22.2	– 55.2
HIP ROOF CLADDING	2.25 TO 5/12	+ 18.1	– 57.2
	5 TO 7/12	+ 18.1	– 44.9
	7 TO 12/12	+ 17.3	– 55.6
WALL CLADDING		+ 24.3	– 32.5

- FOR 115 AND 120 MPH WIND ZONES, FOUNDATION ANCHORAGE IS TO COMPLY WITH SECTION R403.1.6 OF THE NRCR, 2024 EDITION. FOR 130 MPH, 140 MPH, AND 150 MPH WIND ZONES, FOUNDATION ANCHORAGE IS TO COMPLY WITH SECTION 4504 OF THE NRCR, 2024 EDITION.
- ENERGY EFFICIENCY COMPLIANCE AND INSULATION VALUES OF THE BUILDING TO BE IN ACCORDANCE WITH CHAPTER 11 OF THE NRCR, 2024 EDITION.

FOOTING AND FOUNDATION NOTES

- FOUNDATION DESIGN BASED ON A MINIMUM ALLOWABLE BEARING CAPACITY OF 2000 PSF. CONTACT GEOTECHNICAL ENGINEER IF BEARING CAPACITY IS NOT ACHIEVED.
- FOR ALL CONCRETE SLABS AND FOOTINGS, THE AREA WITHIN THE PERIMETER OF THE BUILDING ENVELOPE SHALL HAVE ALL VEGETATION, TOP SOIL AND FOREIGN MATERIAL REMOVED. FILL MATERIAL SHALL BE FREE OF VEGETATION AND FOREIGN MATERIAL. THE FILL SHALL BE COMPACTED TO ASSURE UNIFORM SUPPORT OF THE SLAB, AND EXCEPT WHERE APPROVED, THE FILL DEPTHS SHALL NOT EXCEED 24" FOR CLEAN SAND OR GRAVEL. EXCEPTION: #57 OR #67 STONE MAY BE USED AS FILL FOR MAXIMUM DEPTH OF 4 FEET WITHOUT CONSOLIDATION. A 4" THICK BASED COURSE CONSISTING OF CLEAN GRADED SAND OR GRAVEL SHALL BE PLACED. A BASE COURSE IS NOT REQUIRED WHERE A CONCRETE SLAB IS INSTALLED ON WELL-DRAINED OR SAND-GRAVEL MIXTURE SOILS CLASSIFIED AS GROUP 1, ACCORDING TO THE UNITED SOIL CLASSIFICATION SYSTEM IN ACCORDANCE WITH TABLE R405.1 OF THE NRCR, 2024 EDITION.
- PROPERLY DEWATER EXCAVATION PRIOR TO POURING CONCRETE WHEN BOTTOM OF CONCRETE SLAB IS AT OR BELOW WATER TABLE. IF APPLICABLE, 3/4" – 1" DEEP CONTROL JOINTS ARE TO BE SAWED WITHIN 4 TO 12 HOURS OF CONCRETE FINISHING AND WALL LOCATIONS HAVE BEEN MARKED. ADJUST WHERE NECESSARY.
- CONCRETE SHALL CONFORM TO SECTION R402.2 OF THE NRCR, 2024 EDITION. CONCRETE REINFORCING STEEL TO BE ASTM A615 GRADE 60. WELDED WIRE FABRIC TO BE ASTM A185. MAINTAIN A MINIMUM CONCRETE COVER AROUND REINFORCING STEEL OF 3" IN FOOTINGS AND 1 1/2" IN SLABS. FOR POURED CONCRETE WALLS, CONCRETE COVER FOR REINFORCING STEEL MEASURED FROM THE INSIDE FACE OF THE WALL SHALL NOT BE LESS THAN 3/4". CONCRETE COVER FOR REINFORCING STEEL MEASURED FROM THE OUTSIDE FACE OF THE WALL SHALL NOT BE LESS THAN 1 1/2" FOR #5 BARS OR SMALLER, AND NOT LESS THAN 2" FOR #6 BARS OR LARGER.

- MASONRY UNITS TO CONFORM TO ACE 530/ASCE 5/TMS 402. MORTAR SHALL CONFORM TO ASTM C270.
- THE UNSUPPORTED HEIGHT OF MASONRY PIERS SHALL NOT EXCEED FOUR TIMES THEIR LEAST DIMENSION FOR UNFILLED HOLLOW CONCRETE MASONRY UNITS AND TEN TIMES THEIR LEAST DIMENSION FOR SOLID OR SOLID FILLED PIERS. PIERS MAY BE FILLED SOLID WITH CONCRETE OR TYPE M OR S MORTAR. PIERS AND WALLS SHALL BE CAPPED WITH 8" OF SOLID MASONRY.
- THE CENTER OF EACH OF THE PIERS SHALL BEAR IN THE MIDDLE THIRD OF ITS RESPECTIVE FOOTING. EACH GIRDER SHALL BEAR IN THE MIDDLE THIRD OF THE PIERS.
- ALL CONCRETE AND MASONRY FOUNDATION WALLS ARE TO BE CONSTRUCTED IN ACCORDANCE WITH THE PROVISIONS OF SECTION R404 OF THE NRCR, 2024 EDITION OR IN ACCORDANCE WITH ACI 318, ACI 332, NOMA TR68-A OR ACE 530/ASCE 5/TMS 402. MASONRY FOUNDATION WALLS ARE TO BE REINFORCED PER TABLE R404.1.1(1), R404.1.1(2), R404.1.1(3), OR R404.1.1(4) OF THE NRCR, 2024 EDITION. CONCRETE FOUNDATION WALLS ARE TO BE REINFORCED PER TABLE R404.1.2(8) OF THE NRCR, 2024 EDITION. STEP CONCRETE FOUNDATION WALLS TO 2 x 6 FRAMED WALLS AT 16" O.C. WHERE GRADE PERMITS (UNO).

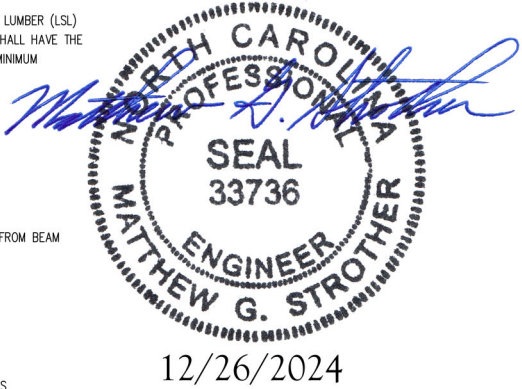
FRAMING NOTES

- ALL FRAMING LUMBER SHALL BE #2 SPF MINIMUM (Fb = 875 PSI, Fv = 375 PSI, E = 1600000 PSI) UNLESS NOTED OTHERWISE (UNO). ALL TREATED LUMBER SHALL BE #2 SYP MINIMUM (Fb = 975 PSI, Fv =175 PSI, E = 1600000 PSI) UNLESS NOTED OTHERWISE (UNO).
- LAMINATED VENEER LUMBER (LVL) SHALL HAVE THE FOLLOWING MINIMUM PROPERTIES: Fb =2600 PSI, Fv = 285 PSI, E = 1900000 PSI. LAMINATED STRAND LUMBER (LSL) SHALL HAVE THE FOLLOWING MINIMUM PROPERTIES: Fb = 2325 PSI, Fv = 310 PSI, E = 1550000 PSI. PARALLEL STRAND LUMBER (PSL) UP TO 7" DEPTH SHALL HAVE THE FOLLOWING MINIMUM PROPERTIES: Fc = 2500 PSI, E =1800000 PSI. PARALLEL STRAND LUMBER (PSL) MORE THAN 7" DEPTH SHALL HAVE THE FOLLOWING MINIMUM PROPERTIES: Fc = 2900 PSI, E = 2000000 PSI. INSTALL ALL CONNECTIONS PER MANUFACTURER'S SPECIFICATIONS.
- STRUCTURAL STEEL SHALL CONFORM TO THE FOLLOWING ASTM SPECIFICATIONS
 - W AND WT SHAPES: ASTM A992
 - CHANNELS AND ANGLES: ASTM A36
 - PLATES AND BARS: ASTM A36
 - HOLLOW STRUCTURAL SECTIONS: ASTM A500 GRADE B
 - STEEL PIPE: ASTM A53, GRADE B, TYPE E OR S
- STEEL BEAMS SHALL BE SUPPORTED AT EACH END WITH A MINIMUM BEARING LENGTH OF 3 1/2" AND FULL FLANGE WIDTH (UNO). PROVIDE SOLID BEARING FROM BEAM SUPPORT TO FOUNDATION. BEAMS SHALL BE ATTACHED AT THE BOTTOM FLANGE TO EACH SUPPORT AS FOLLOWS (UNO):
 - WOOD FRAMING (2) 1/2" DIA. x 4" LONG LAG SCREWS
 - CONCRETE (2) 1/2" DIA. x 4" WEDGE ANCHORS
 - MASONRY (FULLY GROUTED) (2) 1/2" DIA. x 4" LONG SIMPSON TITEN HD ANCHORS
 - STEEL PIPE COLUMN (4) 3/4" DIA. A325 BOLTS OR 3/16" FILLET WELD

LATERAL SUPPORT IS CONSIDERED ADEQUATE PROVIDING THE JOISTS ARE TOE NAILED TO THE 2x NAILER ON TOP OF THE STEEL BEAM, AND THE 2x NAILER IS SECURED TO THE TOP OF THE STEEL BEAM w/ (2) ROWS OF SELF TAPPING SCREWS @ 16" O.C. OR (2) ROWS OF 1/2" DIAMETER BOLTS @ 16" O.C. IF 1/2" BOLTS ARE USED TO FASTEN THE NAILER, THE STEEL BEAM SHALL BE FABRICATED w/ (2) ROWS OF 9/16" DIAMETER HOLES @ 16" O.C.

- SQUARES DENOTE POINT LOADS WHICH REQUIRE SOLID BLOCKING TO GIRDER OR FOUNDATION. SHADED SQUARES DENOTE POINT LOADS FROM ABOVE WHICH REQUIRE SOLID BLOCKING TO SUPPORTING MEMBER BELOW.
- ALL LOAD BEARING HEADERS TO CONFORM TO TABLE R602.7(1) AND R602.7(2) OF THE NRCR, 2024 EDITION OR BE (2) 2 x 6 WITH (1) JACK AND (1) KING STUD EACH END (UNO), WHICHEVER IS GREATER ALL HEADERS TO BE SECURED TO EACH JACK STUD WITH (4) 8d NAILS. ALL BEAMS TO BE SUPPORTED WITH (2) STUDS AT EACH BEARING POINT (UNO). INSTALL KING STUDS PER SECTION R602.7.5 OF THE NORTH CAROLINA RESIDENTIAL CODE, 2024 EDITION.
- ALL BEAMS, HEADERS, OR GIRDER TRUSSES PARALLEL TO WALL ARE TO BEAR FULLY ON (1) JACK OR (2) STUDS MINIMUM OR THE NUMBER OF JACKS OR STUDS NOTED. ALL BEAMS OR GIRDER TRUSSES PERPENDICULAR TO WALL AND SUPPORTED BY (3) STUDS OR LESS ARE TO HAVE 1 1/2" MINIMUM BEARING (UNO). ALL BEAMS OR GIRDER TRUSSES PERPENDICULAR TO WALL AND SUPPORTED BY MORE THAN (3) STUDS OR OTHER NOTED COLUMN ARE TO BEAR FULLY ON SUPPORT COLUMN FOR ENTIRE WALL DEPTH (UNO). BEAM ENDS THAT BUTT INTO ONE ANOTHER ARE TO EACH BEAR EQUAL LENGTHS (UNO).
- FLITCH BEAMS SHALL BE BOLTED TOGETHER USING 1/2" DIAMETER BOLTS (ASTM A307) WITH WASHERS PLACED AT THREADED END OF BOLT. BOLTS SHALL BE SPACED AT 24" CENTERS (MAXIMUM), AND STAGGERED AT TOP AND BOTTOM OF BEAM (2" EDGE DISTANCE), WITH (2) BOLTS LOCATED AT 6" FROM EACH END (UNO).
- ALL I-JOIST OR TRUSS LAYOUTS ARE TO BE IN COMPLIANCE WITH THE OVERALL DESIGN SPECIFIED ON THE PLANS. ALL DEVIATIONS ARE TO BE BROUGHT TO THE ATTENTION OF THE ENGINEER OF RECORD PRIOR TO INSTALLATION.
- BRACED WALL PANELS SHALL BE CONSTRUCTED ACCORDING TO THE NORTH CAROLINA RESIDENTIAL CODE 2024 EDITION WALL BRACING CRITERIA. THE AMOUNT, LENGTH, AND LOCATION OF BRACING SHALL COMPLY WITH ALL APPLICABLE TABLES IN SECTION R602.10.
- PROVIDE DOUBLE JOIST UNDER ALL WALLS PARALLEL TO FLOOR JOISTS. PROVIDE SUPPORT UNDER ALL WALLS PARALLEL TO FLOOR TRUSSES OR I-JOISTS PER STRUCTURAL PLAN. INSTALL BLOCKING BETWEEN JOISTS OR TRUSSES FOR POINT LOAD SUPPORT FOR ALL POINT LOADS ALONG OFFSET LOAD LINES.
- FOR ALL HEADERS SUPPORTING BRICK VENEER THAT ARE LESS THAN 8'-0" IN LENGTH, REST A 6" x 4" x 5/16" STEEL ANGLE WITH 6" MINIMUM EMBEDMENT AT SIDES FOR BRICK SUPPORT (U.N.O.). FOR ALL HEADERS 8'-0" AND GREATER IN LENGTH, BOLT A 6" x 4" x 5/16" STEEL ANGLE TO HEADER WITH 1/2" LAG SCREWS AT 12" O.C. STAGGERED FOR BRICK SUPPORT. FOR ALL BRICK SUPPORT AT ROOF LINES, BOLT A 6" x 4" x 5/16" STEEL ANGLE TO (2) 2 x 10 BLOCKING INSTALLED w/ (4) 12d NAILS EA. PLY BETWEEN WALL STUDS WITH (2) ROWS OF 1/2" LAG SCREWS AT 12" O.C. STAGGERED AND IN ACCORDANCE WITH SECTION R703.8.2.1 OF THE NRCR, 2024 EDITION.
- FOR STICK FRAMED ROOFS: CIRCLES DENOTE (3) 2 x 4 POSTS FOR ROOF MEMBER SUPPORT. HIP SPLICES ARE TO BE SPACED A MINIMUM OF 8'-0". FASTEN MEMBERS WITH THREE ROWS OF 12d NAILS AT 16" O.C. FRAME DORMER WALLS ON TOP OF DOUBLE OR TRIPLE RAFTERS AS SHOWN (UNO).
- FOR TRUSSED ROOFS: FRAME DORMER WALLS ON TOP OF 2 x 4 LADDER FRAMING AT 24" O.C. BETWEEN ADJACENT ROOF TRUSSES. STICK FRAME OVER-FRAMED ROOF SECTIONS WITH 2 x 8 RIDGES, 2 x 6 RAFTERS AT 16" O.C. AND FLAT 2 x 10 VALLEYS (UNO).
- ALL 4 x 4 AND 6 x 6 POSTS TO BE INSTALLED WITH 700 LB CAPACITY UPLIFT CONNECTORS TOP AND BOTTOM (UNO). POSTS MAY BE SECURED TO WOOD FRAMING WITH SIMPSON CS16 COIL STRAPPING WITH 9" END LENGTHS OR (2) 6" LONG SIMPSON SDS SCREWS (OR EQUAL) DRIVEN AT AN ANGLE FROM OPPOSITE SIDES. FOR MASONRY OR CONCRETE FOUNDATION USE SIMPSON POST BASE.
- CONSTRUCT ALL WOOD DECKS ACCORDING TO CHAPTER 47-WOOD DECKS.

This sealed page is to be used in conjunction with a full plan set engineered by J.S. Thompson Engineering, Inc. only. Use of this individual sealed page within architectural pages or shop drawings by others is a punishable offense under N.C. Statute § 89C-23



J.S. THOMPSON
ENGINEERING, INC
333 EAST SIX FORKS ROAD, SUITE 180 RALEIGH, NC 27609
PHONE: (919) 789-9919 FAX: (919) 789-9921
N.C. LICENSE NO.: C1733

STANDARD STRUCTURAL NOTES

DATE: NOVEMBER 4, 2024
DRAWN BY: JST
ENGINEERED BY: JST

STRUCTURAL
NOTES