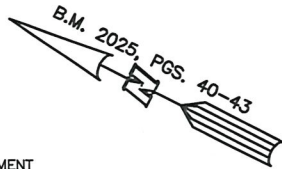


AS-BUILT IMPROVEMENTS FOR  
NEW HOME, INC.  
355 BEACON HILL ROAD  
LOT 23, DUNCAN'S CREEK, PHASE 2  
UPPER LITTLE CREEK TOWNSHIP, HARNETT COUNTY, NORTH CAROLINA

LEGEND

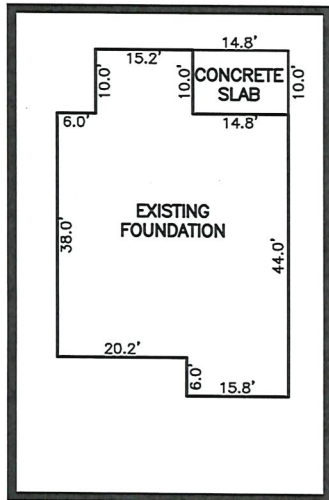
- △ AIR CONDITIONER  
BC BACK OF CURB  
BFP BACK FLOW PREVENTER  
○ CLEANOUT  
□ CURB INLET  
DHS DRILL HOLE SET  
ECM EXISTING CONCRETE MONUMENT  
EDH EXISTING DRILL HOLE  
EIS EXISTING IRON STAKE  
EIP EXISTING IRON PIPE  
EM ELECTRIC METER  
EPK EXISTING PK NAIL  
ES ELECTRIC STUB  
▽ FLARED END SECTION  
○ FIRE HYDRANT  
○ FIBER OPTIC PEDESTAL  
GM GAS METER  
GUY  
INV INVERT  
IPS IRON PIPE SET  
IRS IRON ROD SET  
○ LIGHT POLE  
MNS MAGNETIC NAIL SET  
○ MANHOLE SANITARY SEWER  
○ MANHOLE STORM SEWER  
OHV OVERHEAD WIRES  
PKS PK NAIL SET  
PNS POINT NOT SET  
RRS RAIL ROAD SPIKE  
○ TELEPHONE PEDESTAL  
○ TRANSFORMER  
○ CABLE TV PEDESTAL  
○ UTILITY POLE  
○ WATER METER  
○ WATER VALVE  
○ YARD INLET  
○ FIELD MEASUREMENT  
△ REVISION TRIANGLE



N/F  
JOHNNY LYNWOOD HOLLAND  
D.B. 2433, PG. 915  
PLAT CABINET F SLIDE 586-A

N/F  
STEPHANIE & JASEN  
CARRICO  
D.B. 4187, PG. 2991  
P.B. 2013, PG. 392

22  
DUNCAN CREEK  
PHASE 1  
B.M. 2022, PG.  
594-596



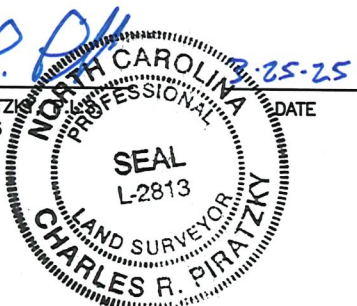
INSET SCALE: 1"=30"

THIS AS-BUILT IS  
FOR CODE COMPLIANCE.  
NOT FOR SALES OR  
CONVEYANCE

WAKE COUNTY, NORTH CAROLINA

I CERTIFY THAT THIS MAP WAS DRAWN UNDER MY  
SUPERVISION THAT THE IMPROVEMENTS LIE  
WHOLLY UPON THE LOT AND THAT THE PROPERTY  
SHOWN IS AN EXISTING PARCEL OR PARCELS OF  
LAND.

CHARLES R. PIRATZKY  
L-2813



BEACON HILL ROAD  
50' PUBLIC R/W

REFERENCES:  
B.M. 2025, PGS. 40-43

60' 0 60'  
SCALE: 1" = 60'

NOTES

1. THIS SURVEY SUBJECT TO ANY FACTS THAT MAY BE DISCLOSED BY A FULL AND ACCURATE TITLE SEARCH.
2. THIS MAP MAY NOT BE A CERTIFIED SURVEY AND HAS NOT BEEN REVIEWED BY A LOCAL GOVERNMENT AGENCY FOR COMPLIANCE WITH ANY APPLICABLE LAND DEVELOPMENT REGULATIONS AND HAS NOT BEEN REVIEWED FOR COMPLIANCE WITH RECORDING REQUIREMENTS FOR PLATS.

DATE: MARCH 14, 2025

Q:\FieldLoc\DNCK 23 FDN.txt

**RWK, PA**  
ENGINEERING ~ SURVEYING  
CORPORATE LICENSE: C-1771  
101 W. MAIN ST., SUITE 202  
GARNER, NC 27529  
PHONE (919) 779-4854  
FAX (919) 779-4056

0:\DUNCAN'S CREEK\DNCK23\DNCK 23.DWG

SETBACK INFO

FRONT: 35'  
REAR: 25'  
SIDES: 10'  
CORNER SIDE: 20'

LINE	BEARING	DISTANCE
L1	S 09°08'32" E	51.94'

N 83°25'24" E 148.56'  
SETBACK LINES  
37,450 S.F.  
0.860 AC.  
190.4'  
N 63°16'32" E 275.52'  
S 63°16'32" W 397.43'  
N 26°43'28" W 100.00'  
32.0'  
32.0'  
36.0'  
20' PUBLIC UTILITY EASEMENT

24