

PRELIMINARY PLOT PLAN FOR

MUNGO HOMES

LOT 40, CAMBRIDGE SUBDIVISION

61 ATHERTON CIRCLE

REF: P.B. 2025, PG.7

NEILL'S CREEK TOWNSHIP

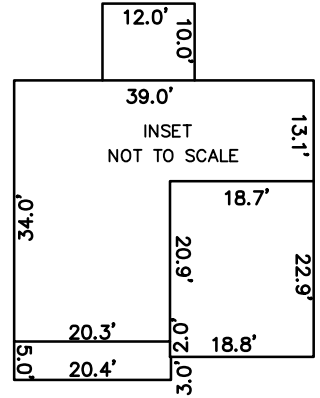
HARNETT COUNTY, NORTH CAROLINA

JANUARY 21, 2025

ZONED RA-30

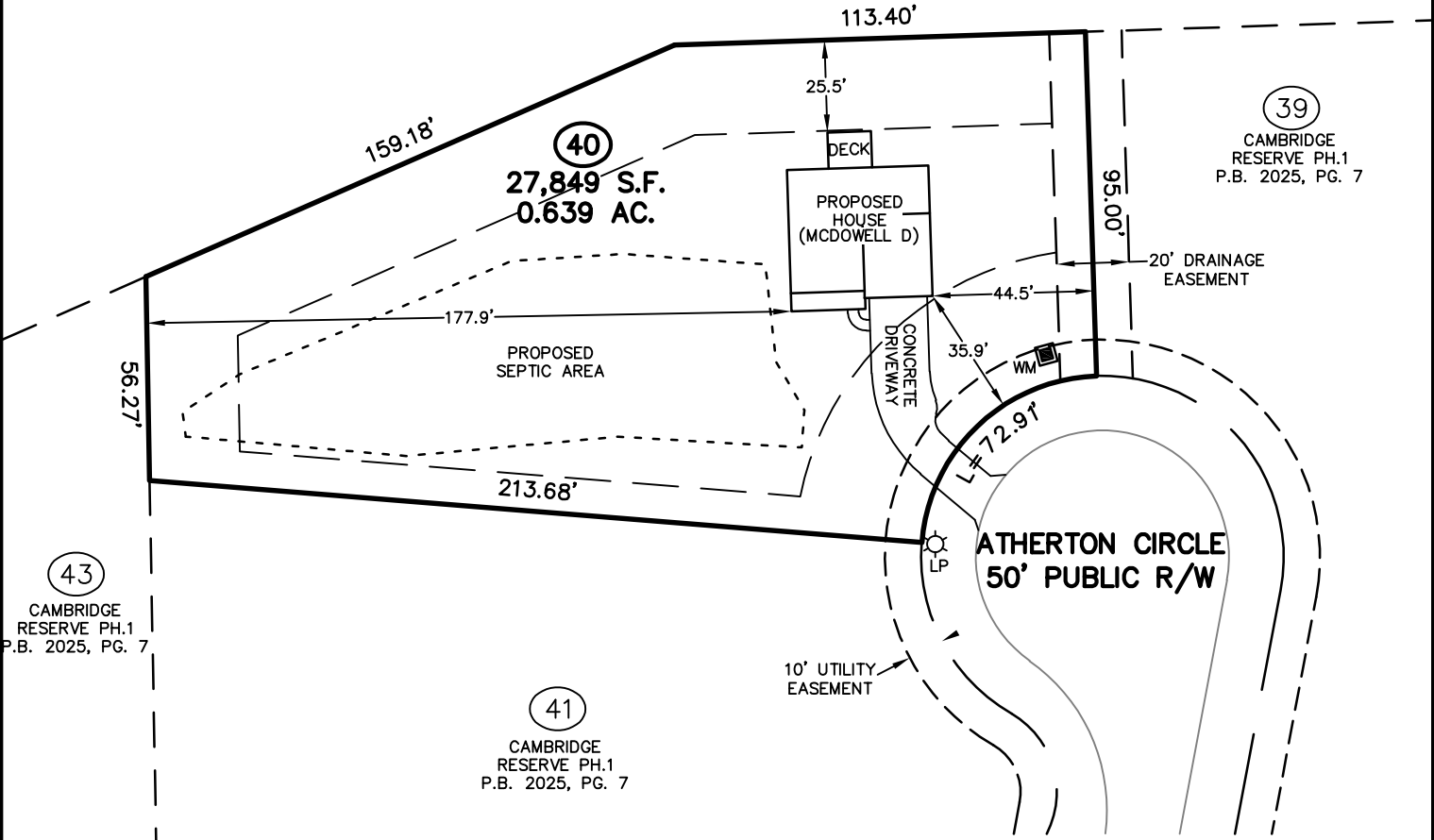


SCALE 1"=50'



COMMON/AREA
OPEN SPACE

CAMBRIDGE
RESERVE PH.1
P.B. 2025, PG. 7



43
CAMBRIDGE
RESERVE PH.1
P.B. 2025, PG. 7

41
CAMBRIDGE
RESERVE PH.1
P.B. 2025, PG. 7

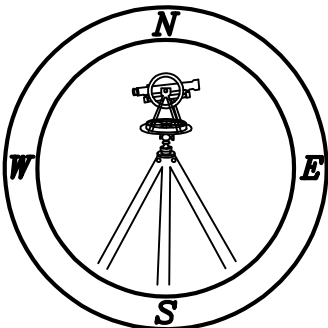
39
CAMBRIDGE
RESERVE PH.1
P.B. 2025, PG. 7

IMPERVIOUS SURFACE TABLE

HOUSE	1,465 S.F.
DECK	120 S.F.
DRIVEWAY	754 S.F.
SIDEWALKS	25 S.F.
MISC/UTILITIES	9 S.F.
TOTAL IMPERVIOUS AREA	2,373 S.F.
TOTAL LOT AREA	27,849 S.F.
PERCENTAGE OF IMPERVIOUS AREA	8.52 %

TOTAL CONCRETE & LANDSCAPE	
CONCRETE	970 S.F.
LANDSCAPE	26,214 S.F.

THIS SURVEYOR DOES NOT WARRANTY THE ACCURACY OF ARCHITECTURAL DIMENSIONS. THEY ARE TO BE VERIFIED BY THE CONTRACTOR.



CMP

Professional Land Surveyors
C-1525

333 S. White Street
Post Office Box 1253
Wake Forest, N.C. 27588
(919)556-3148

NOTES:

-THIS PLAN DOES NOT REFLECT AN ACTUAL SURVEY. IT IS A PRELIMINARY PLAN AND SHOULD BE USED FOR ITS INTENDED PURPOSE ONLY.
-NOT FOR RECORDATION, CONVEYANCES, OR SALES.