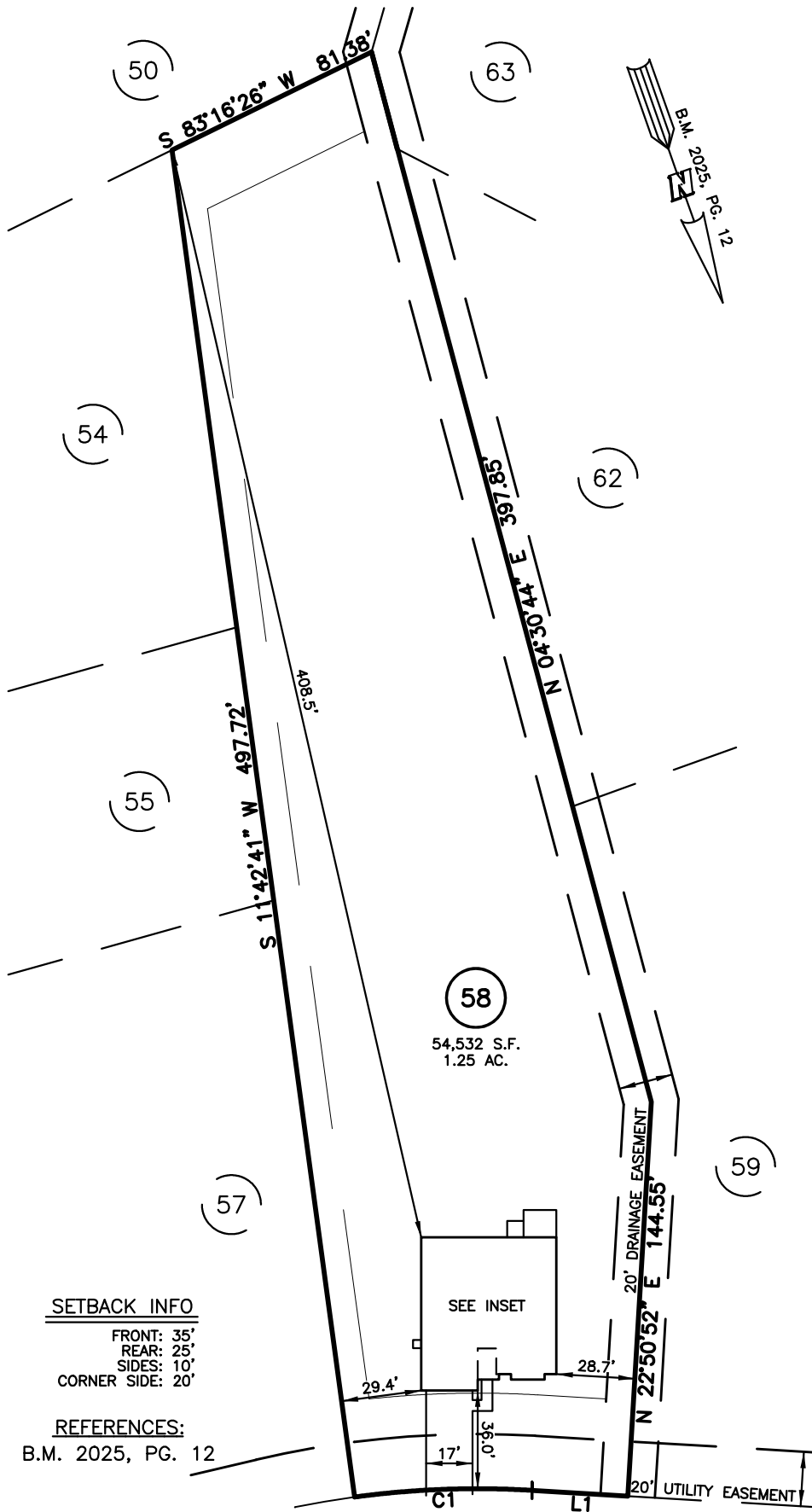


SITE PLAN FOR  
**MATTAMY HOMES**  
 144 THOMAS STORE DRIVE  
 LOT 58, FOX FIELD FARM  
 UPPER LITTLE RIVER TOWNSHIP, HARNETT COUNTY, NORTH CAROLINA



**SETBACK INFO**

FRONT: 35'  
 REAR: 25'  
 SIDES: 10'  
 CORNER SIDE: 20'

**REFERENCES:**

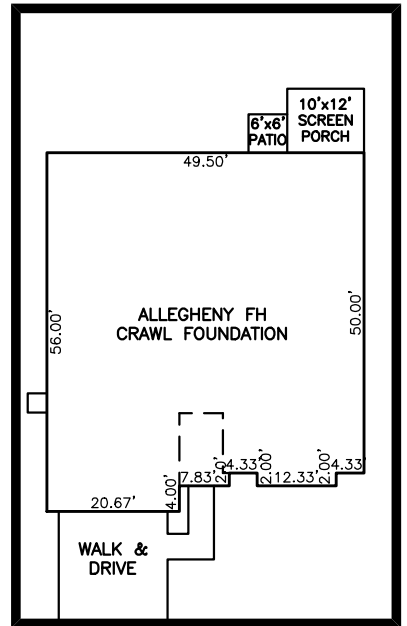
B.M. 2025, PG. 12

LINE	BEARING	DISTANCE
L1	S 67°09'08\" E	35.10'

NUM	RADIUS	ARC	DELTA	CHORD BRG	CHORD
C1	335.00'	65.11'	11°08'11\"	S 72°43'13\" E	65.01'

**THOMAS STORE DRIVE**  
 50' PUBLIC R/W

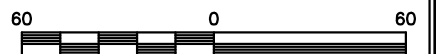
IMPERVIOUS SURFACES	S.F.
HOUSE	2,640
WALK & DRIVE	680
PORCH	120
PATIO + PAD	50
<b>TOTAL</b>	<b>3,490</b>



INSET SCALE: 1"=30"

**LEGEND**

- AIR CONDITIONER
- BACK of CURB
- BACK FLOW PREVENTER
- CLEANOUT
- CURB INLET
- DRILL HOLE SET
- EXISTING CONCRETE MONUMENT
- EXISTING DRILL HOLE
- EXISTING IRON STAKE
- EXISTING IRON PIPE
- ELECTRIC METER
- EXISTING PK NAIL
- ELECTRIC STUB
- FLARED END SECTION
- FIRE HYDRANT
- FIBER OPTIC PEDESTAL
- GAS METER
- GUY
- INVERT
- IRON PIPE SET
- IRON ROD SET
- LIGHT POLE
- MAGNETIC NAIL SET
- MANHOLE SANITARY SEWER
- MANHOLE STORM SEWER
- OVERHEAD WIRES
- PK NAIL SET
- POINT NOT SET
- RAIL ROAD SPIKE
- TELEPHONE PEDESTAL
- TRANSFORMER
- CABLE TV PEDESTAL
- UTILITY POLE
- WATER METER
- WATER VALVE
- YARD INLET
- FIELD MEASUREMENT
- REVISION TRIANGLE



SCALE: 1" = 60'

THIS IS A SITE PLAN AS DEFINED BY G.S. 160D-102 AND IS NOT INTENDED TO BE ATTACHED TO ANY INSTRUMENT RECORDED IN THE REGISTER OF DEEDS OFFICE

**SITE PLAN**  
 NOT FOR RECORDATION,  
 CONVEYANCE OR SALES

REV CODE: 1.FLIP, 2.PLAN, 3.ROTATE, 4.MOVE, 5.SS  
 6.SEVERAL OF ABOVE, 7.LAND FEATURE, 8. OTHER

DATE: JAN. 31, 2025

F.B. \_\_\_\_\_

**RWK, PA**

**ENGINEERING ~ SURVEYING**

CORPORATE LICENSE: C-1771  
 101 W. MAIN ST., SUITE 202  
 GARNER, NC 27529  
 PHONE (919) 779-4854  
 FAX (919) 779-4056