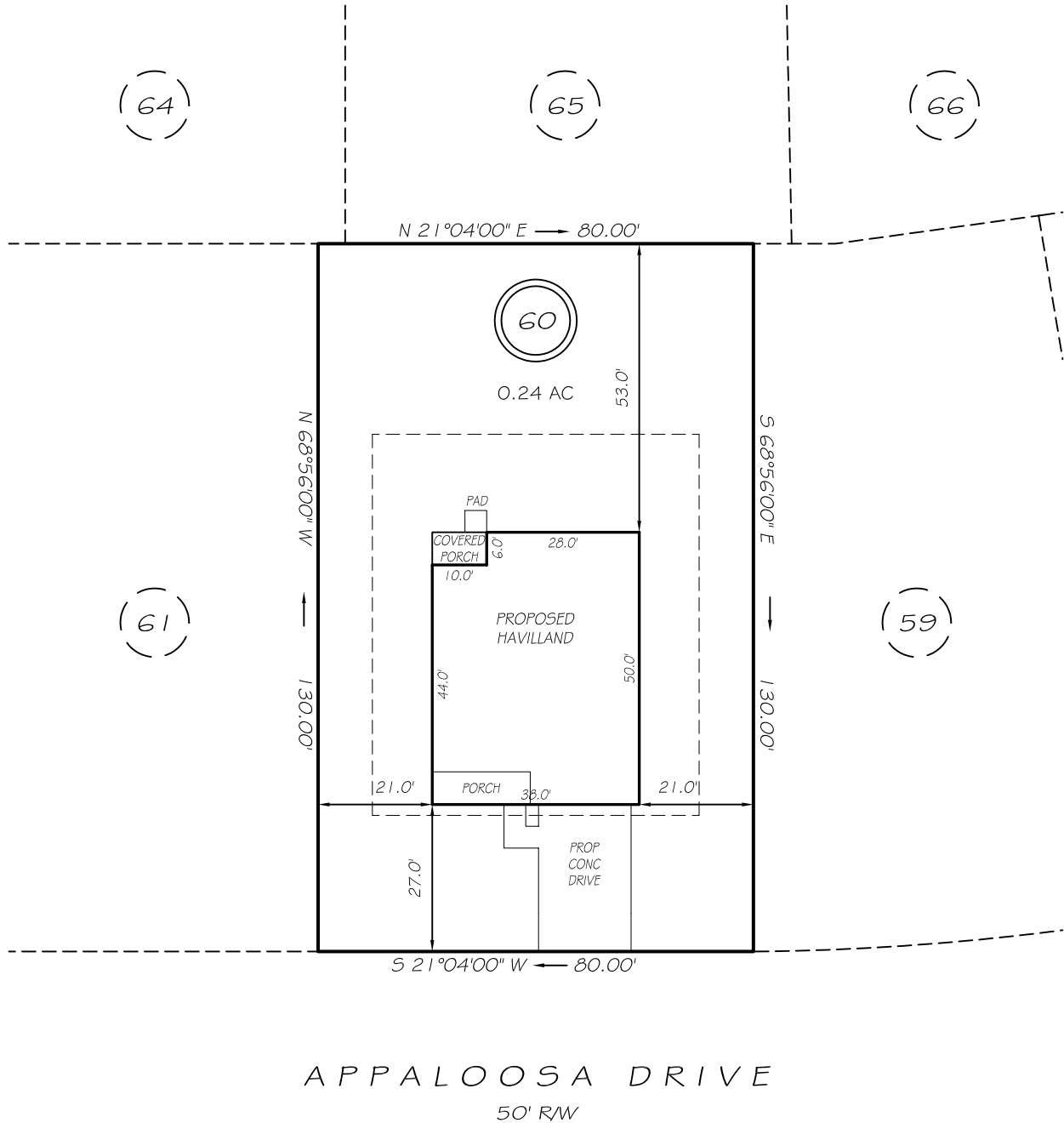


I, MICHAEL P. GRIFFIN, certify that under my direction and supervision this map was drawn from an actual field survey, that the error of closure of the survey as calculated by coordinates is 1: 10,000+; that the area shown hereon was calculated by coordinates. Dashed lines shown hereon were not surveyed.

Witness my hand and seal this day of MONTH 2025.

PB 19 PG 4  
HARNETT CO. REGISTRY



APPALOOSA DRIVE  
50' RW

SETBACKS

FRONT	25'
REAR	35'
SIDE	10'
CORNER SIDE	20'

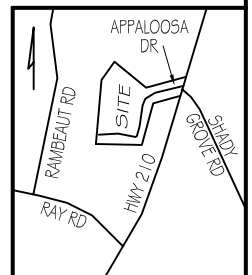


GRAPHIC SCALE  
1"=30'

LEGEND

**P R E L I M I N A R Y**  
NOT FOR RECORDATION,  
SALES OR CONVEYANCE

EIP	EXISTING IRON PIPE	FES	FLARED END SECTION
ISS	IRON STAKE SET	WM	WATER METER
RAW	RIGHT OF WAY	CO	CLEAN OUT
N/F	NOW OR FORMERLY	FH	FIRE HYDRANT
EIS	EXISTING IRON STAKE	CB	CATCH BASIN



**GRIFFIN LAND SURVEYING, INC.**

P. O. BOX 148  
FUQUAY-VARINA, NC 27526  
(919) - 567 - 1963

FIRM LIC.# C-1345

**PLOT PLAN**  
FOR

**A & G RESIDENTIAL**

**HARNETT LAKES**

**LOT 60**

224 APPALOOSA DRIVE

SPRING LAKE, N.C.

HARNETT COUNTY ANDERSON CREEK

DRAWN BY **KDF**

DATE **1/9/25**

CHECKED BY **MPG**

SCALE **1" = 30'**