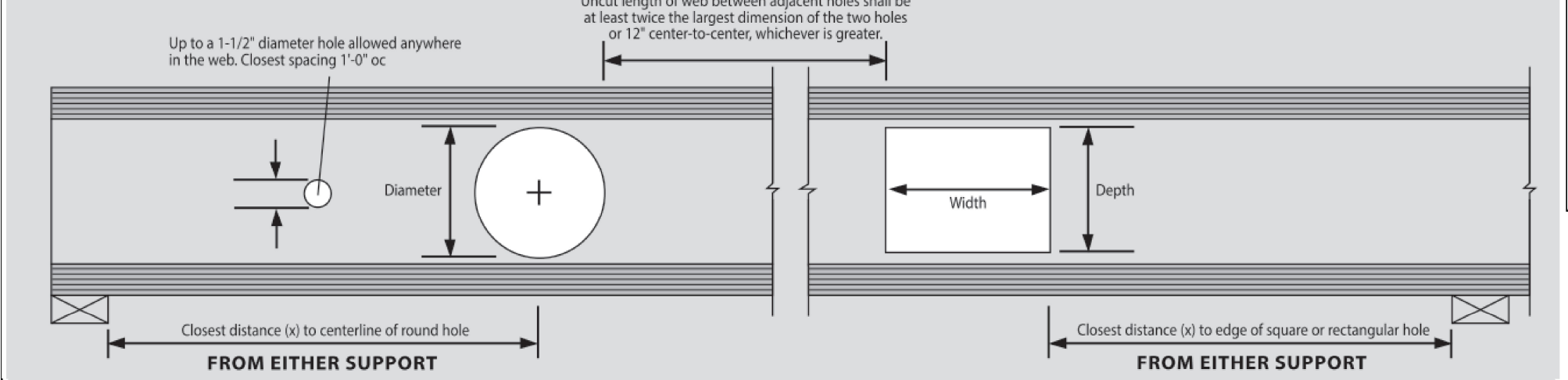


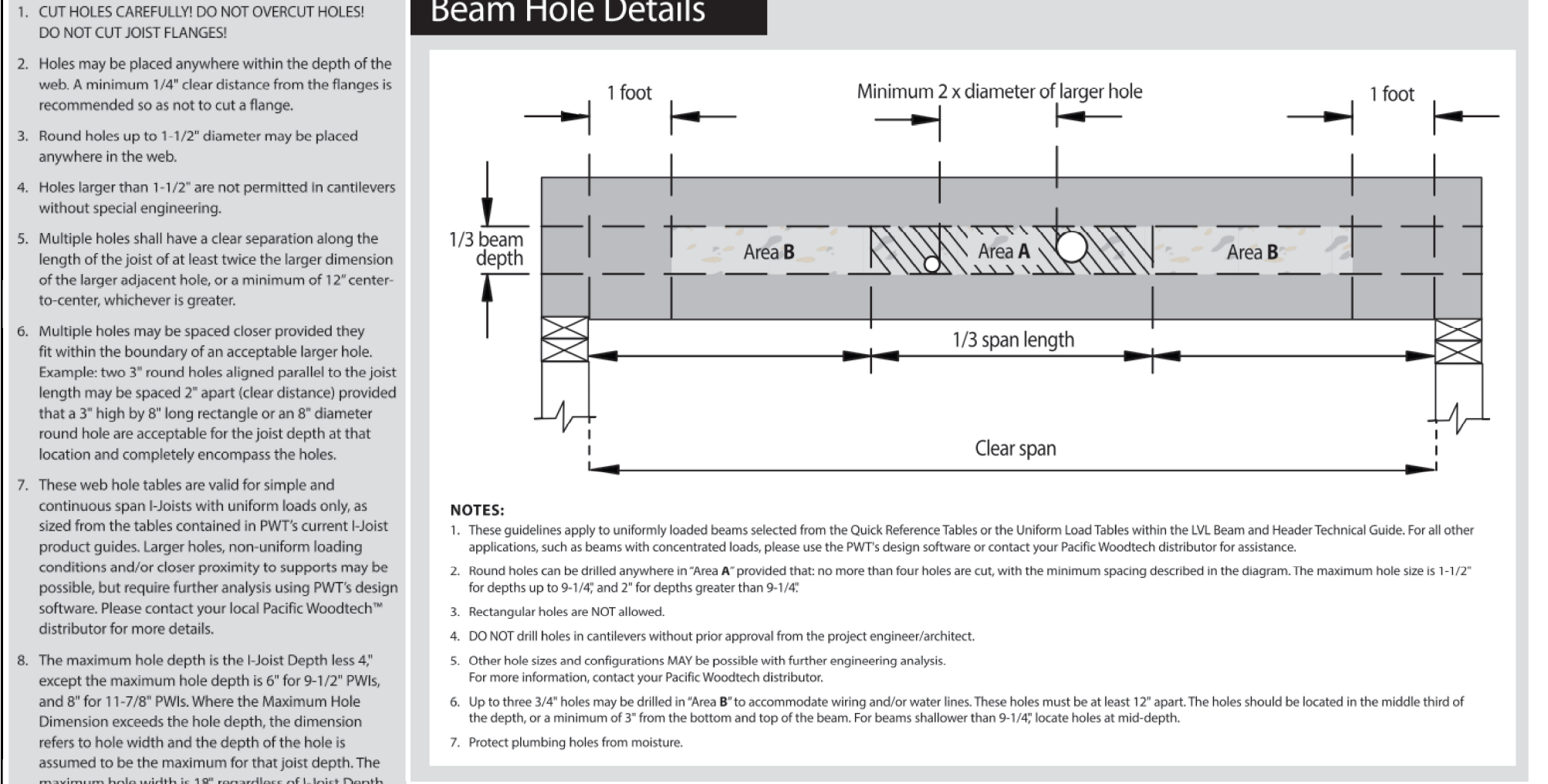
2160 Satellite Blvd., Suite 450
Duluth, GA 30097
888-613-5078

Web Hole Details



SERIES	DEPTH	CIRCULAR HOLE DIAMETER											
		2"	3"	4"	5"	6"	7"	8"	9"	10"	11"	12"	
PWI 18S, LPI 18	9-1/2"	1'-2"	1'-10"	2'-7"	3'-3"	4'-3"	-	-	-	-	-	-	-
	11-7/8"	1'-0"	1'-5"	2'-1"	2'-9"	3'-6"	4'-3"	5'-5"	-	-	-	-	-
	14"	1'-0"	1'-0"	1'-5"	2'-0"	2'-8"	-	-	-	-	-	-	-
PWI 20S, LPI 20Plus	9-1/2"	1'-0"	1'-4"	1'-11"	2'-5"	2'-11"	3'-6"	4'-0"	-	-	-	-	-
	11-7/8"	1'-0"	1'-4"	1'-11"	2'-5"	2'-11"	3'-6"	4'-0"	4'-6"	5'-1"	-	-	-
	14"	1'-3"	1'-8"	2'-2"	2'-7"	3'-1"	3'-6"	4'-0"	4'-6"	5'-1"	5'-7"	6'-3"	-
PWI 32S, LPI 32Plus	9-1/2"	1'-0"	1'-2"	1'-11"	2'-9"	3'-6"	-	-	-	-	-	-	-
	11-7/8"	1'-1"	1'-9"	2'-5"	3'-0"	3'-8"	4'-4"	5'-0"	-	-	-	-	-
	14"	1'-8"	2'-3"	2'-10"	3'-5"	4'-0"	4'-8"	5'-3"	5'-11"	6'-7"	-	-	-
PWI 42S, LPI 42Plus	9-1/2"	1'-3"	2'-3"	3'-4"	4'-4"	5'-5"	-	-	-	-	-	-	-
	11-7/8"	3'-2"	3'-10"	4'-7"	5'-3"	6'-0"	6'-9"	7'-8"	8'-10"	9'-11"	-	-	-
	14"	4'-5"	5'-0"	5'-7"	6'-1"	6'-8"	7'-3"	8'-0"	8'-10"	9'-11"	-	-	-
PWI 52S, LPI 52Plus	9-1/2"	5'-0"	5'-6"	6'-2"	6'-9"	7'-5"	8'-2"	8'-11"	-	-	-	-	-
	11-7/8"	5'-0"	5'-6"	6'-2"	6'-9"	7'-5"	8'-2"	8'-11"	10'-6"	11'-4"	-	-	-
	14"	6'-1"	6'-7"	7'-1"	7'-7"	8'-3"	8'-11"	9'-8"	10'-6"	11'-4"	12'-1"	12'-11"	13'-9"
PWI 36L, LPI 36	9-1/2"	1'-0"	2'-0"	3'-0"	4'-0"	5'-1"	6'-2"	7'-6"	-	-	-	-	-
	11-7/8"	3'-9"	4'-9"	5'-9"	6'-9"	7'-9"	8'-10"	9'-11"	-	-	-	-	-
	14"	1'-10"	2'-8"	3'-7"	4'-5"	5'-4"	6'-3"	7'-3"	8'-6"	9'-11"	-	-	-
PWI 56L, LPI 56	9-1/2"	1'-3"	2'-5"	3'-7"	4'-9"	6'-0"	-	-	-	-	-	-	-
	11-7/8"	1'-0"	1'-7"	2'-6"	3'-8"	4'-11"	6'-2"	7'-9"	-	-	-	-	-
	14"	1'-0"	1'-3"	1'-11"	2'-8"	3'-9"	4'-11"	6'-1"	7'-6"	9'-4"	-	-	-
PWI 53L, LPI 530	9-1/2"	1'-0"	1'-2"	1'-8"	2'-2"	2'-11"	4'-0"	5'-1"	-	-	-	-	-
	11-7/8"	1'-0"	1'-2"	1'-8"	2'-2"	2'-11"	4'-0"	5'-1"	-	-	-	-	-
	14"	1'-0"	1'-2"	1'-8"	2'-2"	2'-11"	4'-0"	5'-1"	-	-	-	-	-

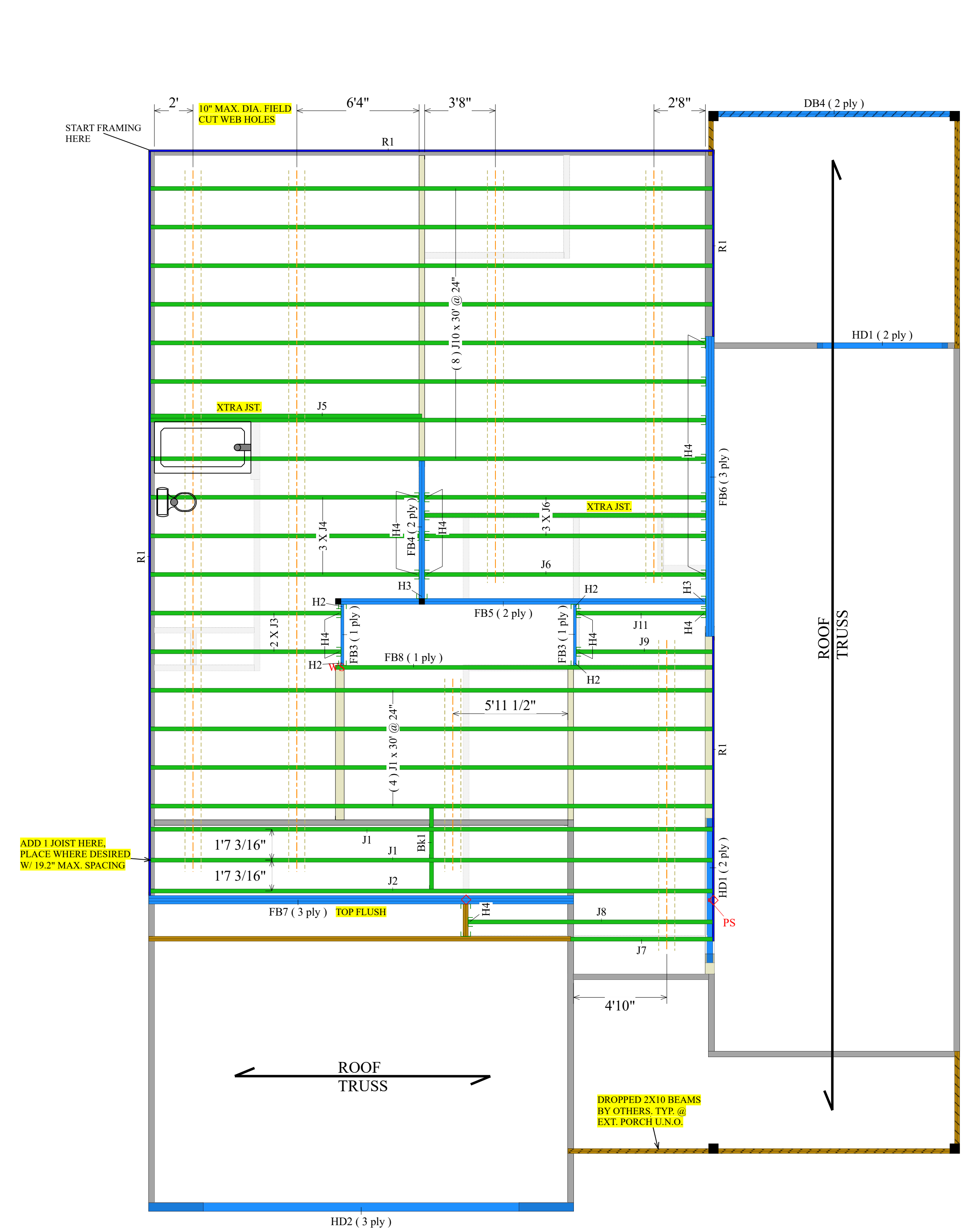
SERIES	DEPTH	RECTANGULAR HOLE MAXIMUM DIMENSION: DEPTH OR WIDTH											
		2"	3"	4"	5"	6"	7"	8"	9"	10"	11"	12"	
PWI 18S, LPI 18	9-1/2"	2'-7"	3'-0"	3'-7"	4'-3"	5'-4"	5'-9"	6'-1"	6'-7"	7'-1"	7'-7"	8'-1"	-
	11-7/8"	3'-5"	3'-10"	4'-4"	4'-11"	5'-10"	7'-0"	8'-11"	9'-6"	10'-2"	10'-10"	-	-
	14"	4'-2"	4'-7"	5'-1"	5'-8"	6'-5"	7'-2"	8'-0"	8'-10"	9'-11"	10'-0"	10'-10"	-
PWI 20S, LPI 20Plus	9-1/2"	1'-2"	1'-10"	2'-7"	3'-3"	4'-3"	-	-	-	-	-	-	-
	11-7/8"	1'-0"	1'-4"	1'-11"	2'-5"	2'-11"	3'-6"	4'-0"	4'-6"	5'-1"	-	-	-
	14"	1'-3"	1'-8"	2'-2"	2'-7"	3'-1"	3'-6"	4'-0"	4'-6"	5'-1"	5'-7"	6'-3"	-
PWI 32S, LPI 32Plus	9-1/2"	1'-0"	1'-2"	1'-11"	2'-9"	3'-6"	-	-	-	-	-	-	-
	11-7/8"	1'-1"	1'-9"	2'-5"	3'-0"	3'-8"	4'-4"	5'-0"	-	-	-	-	-
	14"	1'-8"	2'-3"	2'-10"	3'-5"	4'-0"	4'-8"	5'-3"	5'-11"	6'-7"	-	-	-
PWI 42S, LPI 42Plus	9-1/2"	1'-3"	2'-3"	3'-4"	4'-4"	5'-5"	-	-	-	-	-	-	-
	11-7/8"	3'-2"	3'-10"	4'-7"	5'-3"	6'-0"	6'-9"	7'-8"	8'-10"	9'-11"	-	-	-
	14"	4'-5"	5'-0"	5'-7"	6'-1"	6'-8"	7'-3"	8'-0"	8'-10"	9'-11"	-	-	-



Web Stiffener Detail

SERIES	MIN. THICKNESS	MIN. SIZE	MAX. SIZE	MAX. CTR. MAX. STIFFENER HEIGHT FOR JOIST DEPTH
PWI 18S, LPI 18	3/32"	1/2" x 1/2"	1 1/2" x 1 1/2"	1 1/2"
PWI 20S, LPI 20Plus	3/32"	1/2" x 1/2"	1 1/2" x 1 1/2"	1 1/2"
PWI 32S, LPI 32Plus	1/2"	1 1/2" x 1 1/2"	2 1/2" x 2 1/2"	2 1/2"
PWI 42S, LPI 42Plus	1/2"	1 1/2" x 1 1/2"	2 1/2" x 2 1/2"	2 1/2"

NOTES:
1. Web stiffeners shall be installed in pairs - one to each side of the web. Web stiffeners are always required for the "Bolt Mount" roof joist bearing detail.
2. Web stiffeners shall be cut to fit between the flanges of the PWT I-joist bearing a minimum 1/8" gap. If bearing locations, the stiffeners shall be installed tight to the bottom flange. At locations of concentrated load, the stiffeners shall be installed tight to the top flange.
3. Web stiffeners shall be cut from AWI Rated OSB or equal or from PWT LVL or OSB Rim Board. 2x lumber is permitted.
4. Do NOT use 1x lumber cut to fit. Do NOT nail the required stiffener thickness from multiple pieces.
5. Web stiffeners shall be the same width as the bearing surface, with a minimum of 3/16".
6. See Web Stiffener Requirements for minimum stiffener thickness, maximum stiffener height and required nailing.



2nd Floor I Joist (Flush)

Label	Description	Width	Depth	Qty	Plies	Pcs	Length
J10	PWI 20S	2.5	14			8	30-0-0
J2	PWI 20S	2.5	14			1	30-0-0
J1	PWI 20S	2.5	14			6	30-0-0
J6	PWI 20S	2.5	14			4	16-0-0
J5	PWI 20S	2.5	14			1	16-0-0
J8	PWI 20S	2.5	14			1	14-0-0
J4	PWI 20S	2.5	14			3	14-0-0
J3	PWI 20S	2.5	14			2	10-0-0
J11	PWI 20S	2.5	14			1	8-0-0
J9	PWI 20S	2.5	14			1	8-0-0
J7	PWI 20S	2.5	14			1	8-0-0
FB8	PWI 20S	2.5	14			1	20-0-0

LVL/LSL (Flush)

Label	Description	Width	Depth	Qty	Plies	Pcs	Length
FB5	2.0E 2900Fb PWT LVL	1.75	14	1	2	2	20-0-0
FB6	2.0E 2900Fb PWT LVL	1.75	14	1	3	3	16-0-0
FB4	2.0E 2900Fb PWT LVL	1.75	14	1	2	2	8-0-0
FB3	2.0E 2900Fb PWT LVL	1.75	14	1	2	2	4-0-0
FB7	2.0E 2900Fb PWT LVL	1.75	24	1	3	3	22-0-0

LVL/LSL (Dropped)

Label	Description	Width	Depth	Qty	Plies	Pcs	Length
DB4	2.0E 2900Fb PWT LVL	1.75	9.25	1	2	2	14-0-0
HD1	2.0E 2900Fb PWT LVL	1.75	9.25	2	2	4	8-0-0
HD2	2.0E 2900Fb PWT LVL	1.75	11.875	1	3	3	22-0-0

Rim Board

Label	Description	Width	Depth	Qty	Plies	Pcs	Length
R1	Tolko Rim Board Plus 1.125 X 14	1.125	14			8	12-0-0

Blocking

Label	Description	Width	Depth	Qty	Plies	Pcs	Length
Bk1	PWI 20S	2.5	14			Varies	4-0-0

Hanger

Label	Pcs	Description	fasteners	Supported Member
H2	4	IJUS1.8/10	30 16d	10 16d
H3	2	IJ416 (Max)	26 16d	12 10d
H4	21	IJUS2.56/14 (Min)	12 10d	

2ND FLOOR FRAMING

SCALE: 1/4" = 1'

JOIST LABELING SCHEME:
(QTY) MARK X LENGTH @ O.C. SPACING

Legend

- WS - Web Stiffener
- WS - In Hanger Label Denotes Web Stiffener
- PS - Point Load Support (D2 Detail)
- ◇ - Load From Above
- ▨ - Exterior Bearing Wall
- ▩ - Interior Bearing Wall
- ▭ - Non-Bearing Wall
- ▭ - OSB/LSL Rim (Color Varies)
- ▭ - PWI 18S/20S I Joist
- ▭ - PWI 32S I Joist
- ▭ - PWI 42S/90L I Joist
- ▭ - Triforce/Open Joist (Color Varies)
- ▭ - Dropped Beam (Color Varies By Product)
- ▭ - Flush Beam (Color Varies By Product)
- ▭ - Field Framed Pony Wall
- ▭ - Column

THIS IS A PLACEMENT PLAN ONLY AND HAS NOT BEEN DESIGNED BY U.S. LUMBER OR PACIFIC WOODTECH. THIS PLAN IS BASED ON FRAMING PLANS PROVIDED BY MATHEW G. STROTHER, P.E., DATED 12/19/2024 AND IS NOT INTENDED TO REPLACE THE ARCHITECT'S STRUCTURAL PLANS. WHEN USED IN CONJUNCTION WITH THE ARCHITECT'S PLAN, IF SIZE DISCREPANCIES OCCUR, ANY BEAMS SPECIFIED BY THE ARCHITECT OF RECORD SHALL TAKE PRECEDENCE. JOIST SERIES SUBSTITUTIONS ARE BASED ON MANUFACTURERS PUBLISHED DESIGN PROPERTIES AND SPAN ALLOWANCES. ALL MEMBER SIZES HAVE BEEN SPECIFIED BY THE DESIGNER OF RECORD. SUITABILITY, LOADING AND CONNECTIONS OF MEMBERS IS THE RESPONSIBILITY OF THE ARCHITECT. HANGERS SPECIFIED ON PLAN ARE BASED ON MATERIAL, GEOMETRY ONLY AND MUST BE REVIEWED BY THE ARCHITECT PRIOR TO CONSTRUCTION TO ENSURE PROPER LOADING CAPACITIES.

Important Notes
WARNING: Failure to follow proper procedures for handling, storage and installation could result in unsatisfactory performance, unsafe structures and possible collapse.

Product Substitution Warning
FAILURE may result if this product is substituted with other brands or products. This analysis is for PACIFIC WOODTECH products only. US Lumber will not be held responsible if other brands are substituted.

This Material Take Off is provided as an estimate of material needed for the referenced project. It is based on information provided and standard building and construction assumptions. The Take Off is provided without representation or warranty of any kind and is in no way guaranteed to reflect the exact quantity or types of material necessary to complete the project. The customer/builder and/or the architect/engineer are responsible for reviewing and verifying the listed materials based on the way they plan to construct the project. Actual material required to complete the project may be more or less than what is reflected in the Take Off, and any shortages or overages are the sole responsibility of the customer/builder and/or the architect/engineer.