

PRELIMINARY PLOT PLAN FOR

MUNGO HOMES

LOT 39, CAMBRIDGE SUBDIVISION

62 ATHERTON CIRCLE

REF: P.B. 2025, PG. 7

NEILL'S CREEK TOWNSHIP

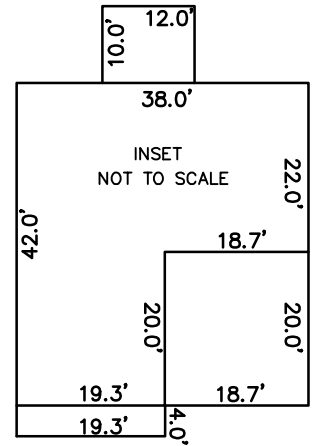
HARNETT COUNTY, NORTH CAROLINA

JANUARY 21, 2025

ZONED RA-30

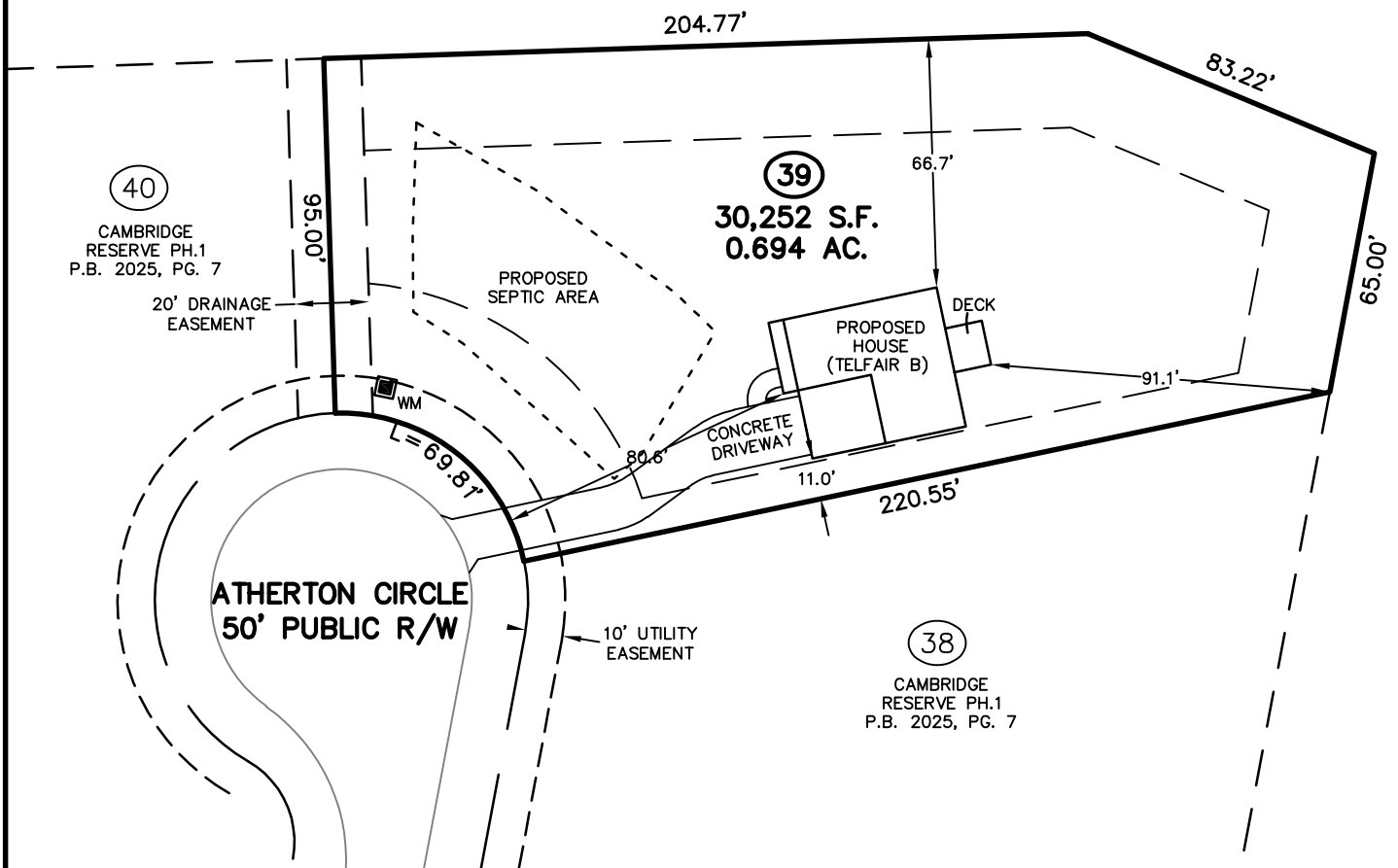


SCALE 1"=50'



COMMON/AREA
OPEN SPACE

CAMBRIDGE
RESERVE PH.1
P.B. 2025, PG. 7

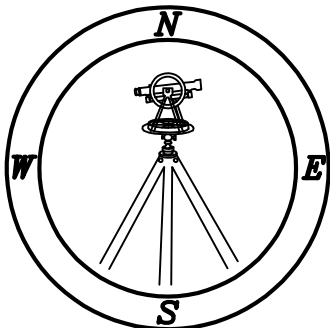


IMPERVIOUS SURFACE TABLE

HOUSE	1,673 S.F.
DECK	120 S.F.
DRIVEWAY	1,121 S.F.
SIDEWALKS	55 S.F.
MISC/UTILITIES	9 S.F.
TOTAL IMPERVIOUS AREA	2,978 S.F.
TOTAL LOT AREA	30,252 S.F.
PERCENTAGE OF IMPERVIOUS AREA	9.84 %

TOTAL CONCRETE & LANDSCAPE	
CONCRETE	1,365 S.F.
LANDSCAPE	27,975 S.F.

THIS SURVEYOR DOES NOT WARRANTY THE ACCURACY OF ARCHITECTURAL DIMENSIONS. THEY ARE TO BE VERIFIED BY THE CONTRACTOR.



Professional Land Surveyors
C-1525

333 S. White Street
Post Office Box 1253
Wake Forest, N.C. 27588
(919)556-3148

NOTES:

-THIS PLAN DOES NOT REFLECT AN ACTUAL SURVEY. IT IS A PRELIMINARY PLAN AND SHOULD BE USED FOR ITS INTENDED PURPOSE ONLY.
-NOT FOR RECORDATION, CONVEYANCES, OR SALES.