

PRELIMINARY PLOT PLAN FOR

MUNGO HOMES

LOT 7, LANGDON PRESERVE

171 ALICE TRACE PLACE

REF: B.M. 2024, PG. 588

GROVE TOWNSHIP

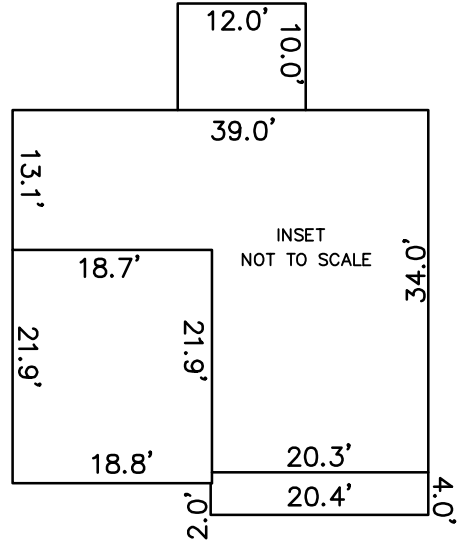
HARNETT COUNTY, NORTH CAROLINA

DECEMBER 3, 2024

REVISED DECEMBER 6, 2024

REVISED JANUARY 29, 2025

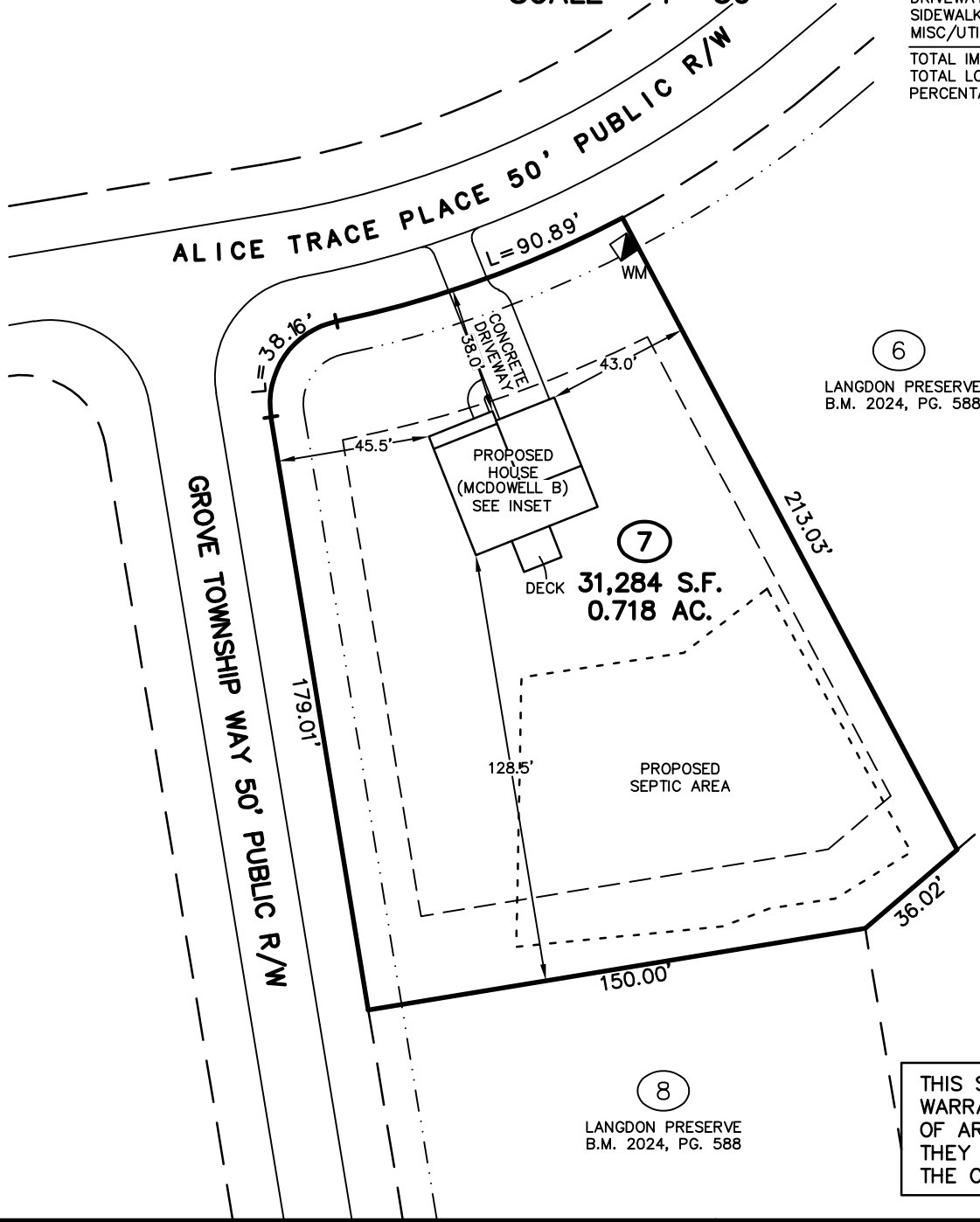
ZONED RA-30



SCALE 1"=50'

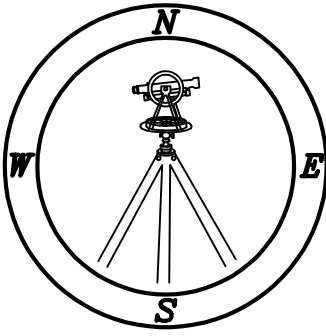
IMPERVIOUS SURFACE TABLE

HOUSE	1,465 S.F.
DECK	120 S.F.
DRIVEWAY	632 S.F.
SIDEWALKS	53 S.F.
MISC/UTILITIES	9 S.F.
TOTAL IMPERVIOUS AREA	2,279 S.F.
TOTAL LOT AREA	31,284 S.F.
PERCENTAGE OF IMPERVIOUS AREA	7.28 %



TOTAL CONCRETE & LANDSCAPE	
CONCRETE	869 S.F.
LANDSCAPE	33,722 S.F.

THIS SURVEYOR DOES NOT WARRANTY THE ACCURACY OF ARCHITECTURAL DIMENSIONS. THEY ARE TO BE VERIFIED BY THE CONTRACTOR.



CMP

Professional Land Surveyors
C-1525

333 S. White Street
Post Office Box 1253
Wake Forest, N.C. 27588
(919)556-3148

NOTES:
 -THIS PLAN DOES NOT REFLECT AN ACTUAL SURVEY. IT IS A PRELIMINARY PLAN AND SHOULD BE USED FOR ITS INTENDED PURPOSE ONLY.
 -NOT FOR RECORDATION, CONVEYANCES, OR SALES.