

Job 72436320	Truss F200	Truss Type Truss	Qty 4	Ply 1	MUNGO HOMES - MCDOWELL B 2ND FLR Job Reference (optional)
-----------------	---------------	---------------------	----------	----------	--

UFP Mid Atlantic LLC, 5631 S. NC 62, Burlington, NC, Joy Perry

Run: 8.810 S Sep 13 2024 Print: 8.810 S Sep 13 2024 MiTek Industries, Inc. Thu Nov 21 07:55:12

Page: 1

ID:q6xmDaGgGpr4T8wcGw4bQWzKH9V-9E?SK1hg4sFbm2lpJd5EblvXm\_PaeQrYDJ95QJyH1hE

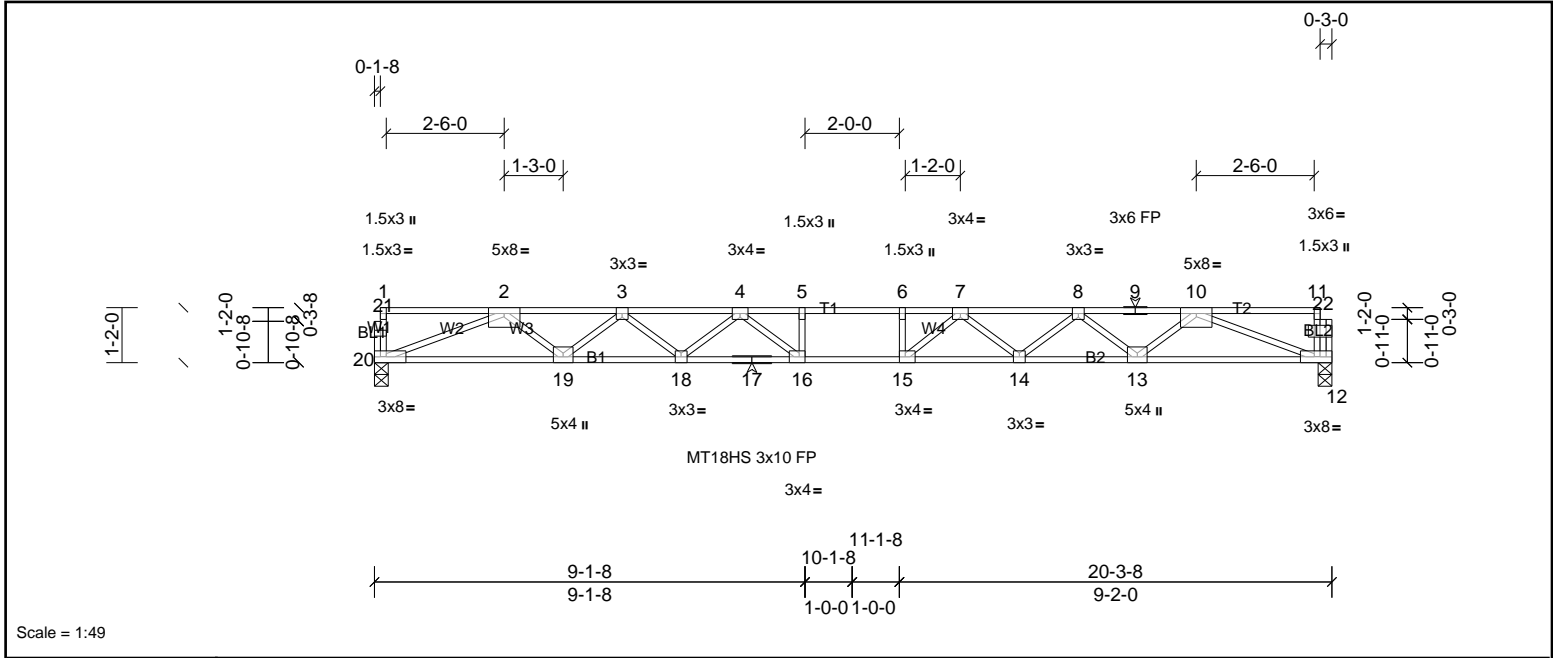


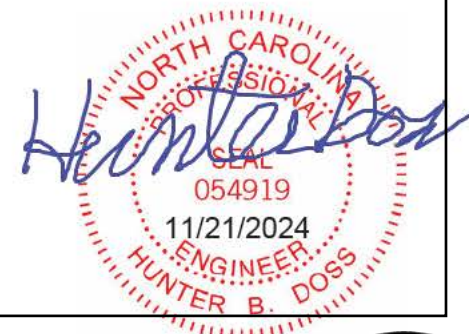
Plate Offsets (X, Y): [12:0-3-8,Edge], [15:0-1-8,Edge], [16:0-1-8,Edge]

Loading	(psf)	Spacing	2-0-0	CSI	DEFLL	in	(loc)	l/defl	L/d	PLATES	GRIP	
TCLL	40.0	Plate Grip DOL	1.00	TC	0.76	Vert(LL)	-0.46	15-16	>527	480	MT18HS	244/190
TCDL	10.0	Lumber DOL	1.00	BC	0.65	Vert(CT)	-0.63	15-16	>383	360	MT20	244/190
BCLL	0.0	Rep Stress Incr	YES	WB	0.73	Horz(CT)	0.10	12	n/a	n/a		
BCDL	5.0	Code	IRC2015/TPI2014	Matrix-SH								
											Weight: 100 lb	FT = 20%F, 12%E

LUMBER		BRACING	
TOP CHORD	2x4 SP No.1(flat)	TOP CHORD	Structural wood sheathing directly applied or 4-11-5 oc purlins, except end verticals.
BOT CHORD	2x4 SP SS(flat)	BOT CHORD	Rigid ceiling directly applied or 10-0-0 oc bracing.
WEBS	2x4 SP No.3(flat)		
OTHERS	2x4 SP No.3(flat)		

REACTIONS	(lb/size)	12=1086/0-3-8, (min. 0-1-8), 20=1093/0-3-8, (min. 0-1-8)
<b>FORCES</b> (lb) - Max. Comp./Max. Ten. - All forces 250 (lb) or less except when shown.		
TOP CHORD		2-3=-3267/0, 3-4=-4529/0, 4-5=-5213/0, 5-6=-5213/0, 6-7=-5213/0, 7-8=-4551/0, 8-9=-3307/0, 9-10=-3307/0
BOT CHORD		19-20=0/2442, 18-19=0/4050, 17-18=0/4980, 16-17=0/4980, 15-16=0/5213, 14-15=0/4996, 13-14=0/4081, 12-13=0/2489
WEBS		5-16=-309/11, 6-15=-319/20, 2-20=-2620/0, 2-19=0/1074, 3-19=-1019/0, 3-18=0/624, 4-18=-588/0, 4-16=-151/704, 10-12=-2656/0, 10-13=0/1064, 8-13=-1008/0, 8-14=0/612, 7-14=-579/0, 7-15=-161/695

- NOTES**
- Unbalanced floor live loads have been considered for this design.
  - All plates are MT20 plates unless otherwise indicated.
  - This truss is designed in accordance with the 2015 International Residential Code sections R502.11.1 and R802.10.2 and referenced standard ANSI/TPI 1.
  - Recommend 2x6 strongbacks, on edge, spaced at 10-00-00 oc and fastened to each truss with 3-10d (0.131" X 3") nails. Strongbacks to be attached to walls at their outer ends or restrained by other means.



This design is based upon parameters shown, and is for an individual building component to be installed and loaded vertically. Applicability of design parameters and proper incorporation of component is responsibility of the Building Designer. Building Designer shall verify all design information on this sheet for conformance with conditions and requirements of the specific building and governing codes and ordinances. Building Designer accepts responsibility for the correctness or accuracy of the design information as it may relate to a specific building. Certification is valid only when truss is fabricated by a UFPI plant. Bracing shown is for lateral support of truss members only and does not replace erection and permanent bracing. Refer to Building Component Safety Information (BCSI) for general guidance regarding storage, erection and bracing available from SBCA and Truss Plate Institute.



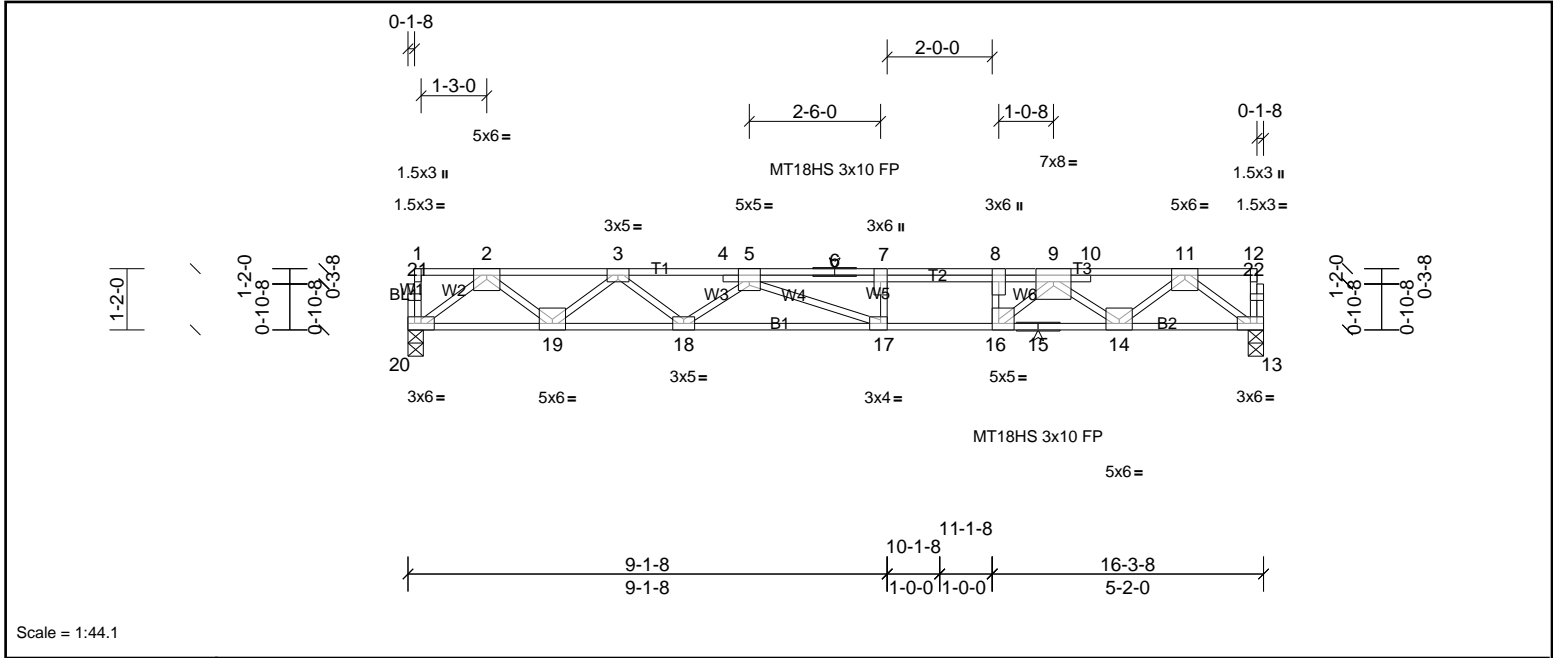
Job 72436320	Truss F201	Truss Type Truss	Qty 5	Ply 1	MUNGO HOMES - MCDOWELL B 2ND FLR Job Reference (optional)
-----------------	---------------	---------------------	----------	----------	--

UFP Mid Atlantic LLC, 5631 S. NC 62, Burlington, NC, Joy Perry

Run: 8.81 S Sep 13 2024 Print: 8.810 S Sep 13 2024 MiTek Industries, Inc. Thu Nov 21 07:55:14

Page: 1

ID:q6xmDaGgGpr4T8wcGw4bQWzKH9V-Zphay3YnndAdWTO\_lexDOX2aCPwrlF\_vHOM1eyH1hB



Scale = 1:44.1

Plate Offsets (X, Y): [5:0-2-8,Edge], [8:0-3-0,Edge], [16:0-1-8,Edge], [17:0-1-8,Edge]

Loading	(psf)	Spacing	2-0-0	CSI	DEFLL	in	(loc)	l/defl	L/d	PLATES	GRIP	
TCLL	40.0	Plate Grip DOL	1.00	TC	0.72	Vert(LL)	-0.21	17-18	>923	480	MT18HS	244/190
TCDL	30.0	Lumber DOL	1.00	BC	0.81	Vert(CT)	-0.46	17-18	>422	360	MT20	244/190
BCLL	0.0	Rep Stress Incr	NO	WB	0.88	Horz(CT)	0.07	13	n/a	n/a		
BCDL	5.0	Code	IRC2015/TPI2014	Matrix-SH								Weight: 90 lb FT = 20%F, 12%E

LUMBER	BRACING
TOP CHORD 2x4 SP SS(flat)	TOP CHORD Structural wood sheathing directly applied or 5-7-14 oc purlins, except end verticals.
BOT CHORD 2x4 SP SS(flat)	BOT CHORD Rigid ceiling directly applied or 10-0-0 oc bracing.
WEBS 2x4 SP No.3(flat)	
OTHERS 2x4 SP No.3(flat)	

REACTIONS	(lb/size)	13=1322/0-3-8, (min. 0-1-8), 20=1294/0-3-8, (min. 0-1-8)
FORCES	(lb) - Max. Comp./Max. Ten. - All forces 250 (lb) or less except when shown.	
TOP CHORD	2-3=-2720/0, 3-4=-4533/0, 4-5=-4531/0, 5-6=-5301/0, 6-7=-5301/0, 7-8=-5301/0, 8-9=-5301/0, 9-10=-2814/0, 10-11=-2807/0	
BOT CHORD	19-20=0/1631, 18-19=0/3789, 17-18=0/5255, 16-17=0/5301, 15-16=0/4057, 14-15=0/4057, 13-14=0/1644	
WEBS	8-16=-1106/0, 2-20=-2042/0, 2-19=0/1418, 3-19=-1392/0, 3-18=0/969, 5-18=-916/0, 5-17=-199/508, 11-13=-2058/0, 11-14=0/1513, 9-14=-1588/0, 9-16=0/1840	

- NOTES**
- 1) Unbalanced floor live loads have been considered for this design.
  - 2) All plates are MT20 plates unless otherwise indicated.
  - 3) This truss is designed in accordance with the 2015 International Residential Code sections R502.11.1 and R802.10.2 and referenced standard ANSI/TPI 1.
  - 4) Load case(s) 1 has/have been modified. Building designer must review loads to verify that they are correct for the intended use of this truss.
  - 5) Recommend 2x6 strongbacks, on edge, spaced at 10-00-00 oc and fastened to each truss with 3-10d (0.131" X 3") nails. Strongbacks to be attached to walls at their outer ends or restrained by other means.

**LOAD CASE(S)** Standard

1) Dead + Floor Live (balanced): Lumber Increase=1.00, Plate Increase=1.00
Uniform Loads (lb/ft)
Vert: 13-20=-10, 1-4=-140, 4-9=-176, 9-12=-140



This design is based upon parameters shown, and is for an individual building component to be installed and loaded vertically. Applicability of design parameters and proper incorporation of component is responsibility of the Building Designer. Building Designer shall verify all design information on this sheet for conformance with conditions and requirements of the specific building and governing codes and ordinances. Building Designer accepts responsibility for the correctness or accuracy of the design information as it may relate to a specific building. Certification is valid only when truss is fabricated by a UFPI plant. Bracing shown is for lateral support of truss members only and does not replace erection and permanent bracing. Refer to Building Component Safety Information (BCSI) for general guidance regarding storage, erection and bracing available from SBCA and Truss Plate Institute.



Job 72436320	Truss F202	Truss Type Truss	Qty 3	Ply 1	MUNGO HOMES - MCDOWELL B 2ND FLR Job Reference (optional)
-----------------	---------------	---------------------	----------	----------	--

UFP Mid Atlantic LLC, 5631 S. NC 62, Burlington, NC, Joy Perry

Run: 8.81 S Sep 13 2024 Print: 8.810 S Sep 13 2024 MiTek Industries, Inc. Thu Nov 21 07:55:14

Page: 1

ID:q6xmDaGgGpr4T8wcGw4bQWzKH9V-Zphay3jYNndAdWTO\_lexDOX\_eCREmP\_vHOM1eyH1hB

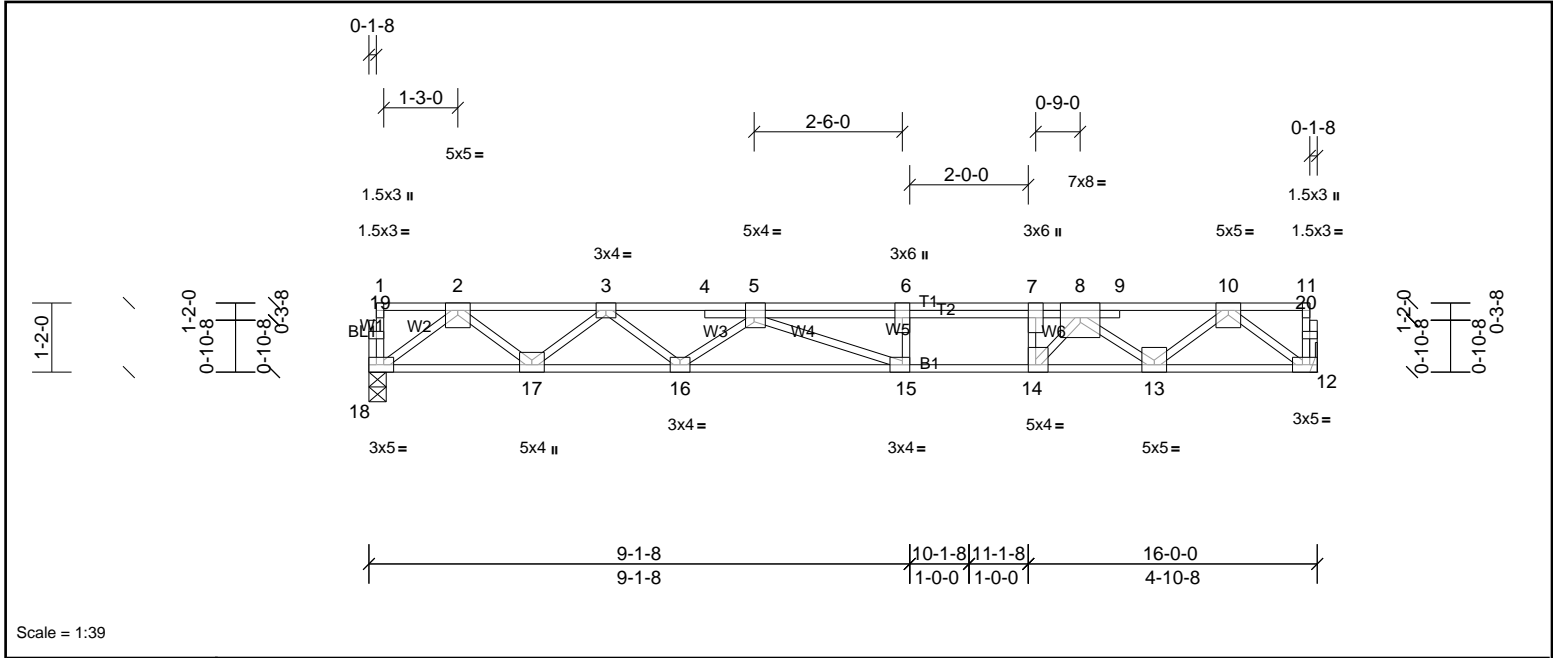


Plate Offsets (X, Y): [5:0-1-12,Edge], [7:0-3-0,Edge], [12:0-2-0,Edge], [14:0-1-8,Edge], [15:0-1-8,Edge], [18:0-2-0,Edge]

Loading	(psf)	Spacing	2-0-0	CSI	DEFL	in	(loc)	l/defl	L/d	PLATES	GRIP	
TCLL	40.0	Plate Grip DOL	1.00	TC	0.97	Vert(LL)	-0.22	15-16	>844	480	MT20	244/190
TCDL	10.0	Lumber DOL	1.00	BC	0.66	Vert(CT)	-0.39	15-16	>488	360		
BCLL	0.0	Rep Stress Incr	NO	WB	0.74	Horz(CT)	0.06	12	n/a	n/a		
BCDL	5.0	Code	IRC2015/TPI2014	Matrix-SH							Weight: 89 lb	FT = 20%F, 12%E

LUMBER	BRACING
TOP CHORD 2x4 SP No.2(flat)	TOP CHORD Structural wood sheathing directly applied or 4-9-4 oc purlins, except end verticals.
BOT CHORD 2x4 SP SS(flat)	BOT CHORD Rigid ceiling directly applied or 10-0-0 oc bracing.
WEBS 2x4 SP No.3(flat)	
OTHERS 2x4 SP No.3(flat)	

**REACTIONS** (lb/size) 12=1000/ Mechanical, (min. 0-1-8), 18=973/0-3-8, (min. 0-1-8)

**FORCES** (lb) - Max. Comp./Max. Ten. - All forces 250 (lb) or less except when shown.

TOP CHORD 2-3=-2055/0, 3-4=-3470/0, 4-5=-3477/0, 5-6=-3974/0, 6-7=-3974/0, 7-8=-3974/0, 8-9=-2140/0, 9-10=-2136/0

BOT CHORD 17-18=0/1227, 16-17=0/2864, 15-16=0/4043, 14-15=0/3974, 13-14=0/3110, 12-13=0/1241

WEBS 7-14=-1071/0, 2-18=-1537/0, 2-17=0/1078, 3-17=-1053/0, 3-16=0/789, 5-16=-728/0, 5-15=-296/415, 10-12=-1553/0, 10-13=0/1166, 8-13=-1237/0, 8-14=0/1550

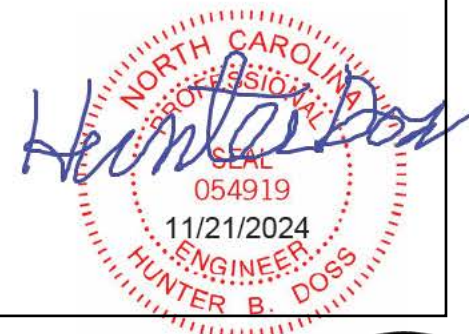
- NOTES**
- 1) Unbalanced floor live loads have been considered for this design.
  - 2) This truss is designed in accordance with the 2015 International Residential Code sections R502.11.1 and R802.10.2 and referenced standard ANSI/TPI 1.
  - 3) Load case(s) 1 has/have been modified. Building designer must review loads to verify that they are correct for the intended use of this truss.
  - 4) Recommend 2x6 strongbacks, on edge, spaced at 10-00-00 oc and fastened to each truss with 3-10d (0.131" X 3") nails. Strongbacks to be attached to walls at their outer ends or restrained by other means.

**LOAD CASE(S)** Standard

1) Dead + Floor Live (balanced): Lumber Increase=1.00, Plate Increase=1.00

Uniform Loads (lb/ft)

Vert: 12-18=-10, 1-4=-100, 4-8=-140, 8-11=-100



This design is based upon parameters shown, and is for an individual building component to be installed and loaded vertically. Applicability of design parameters and proper incorporation of component is responsibility of the Building Designer. Building Designer shall verify all design information on this sheet for conformance with conditions and requirements of the specific building and governing codes and ordinances. Building Designer accepts responsibility for the correctness or accuracy of the design information as it may relate to a specific building. Certification is valid only when truss is fabricated by a UFPI plant. Bracing shown is for lateral support of truss members only and does not replace erection and permanent bracing. Refer to Building Component Safety Information (BCSI) for general guidance regarding storage, erection and bracing available from SBCA and Truss Plate Institute.



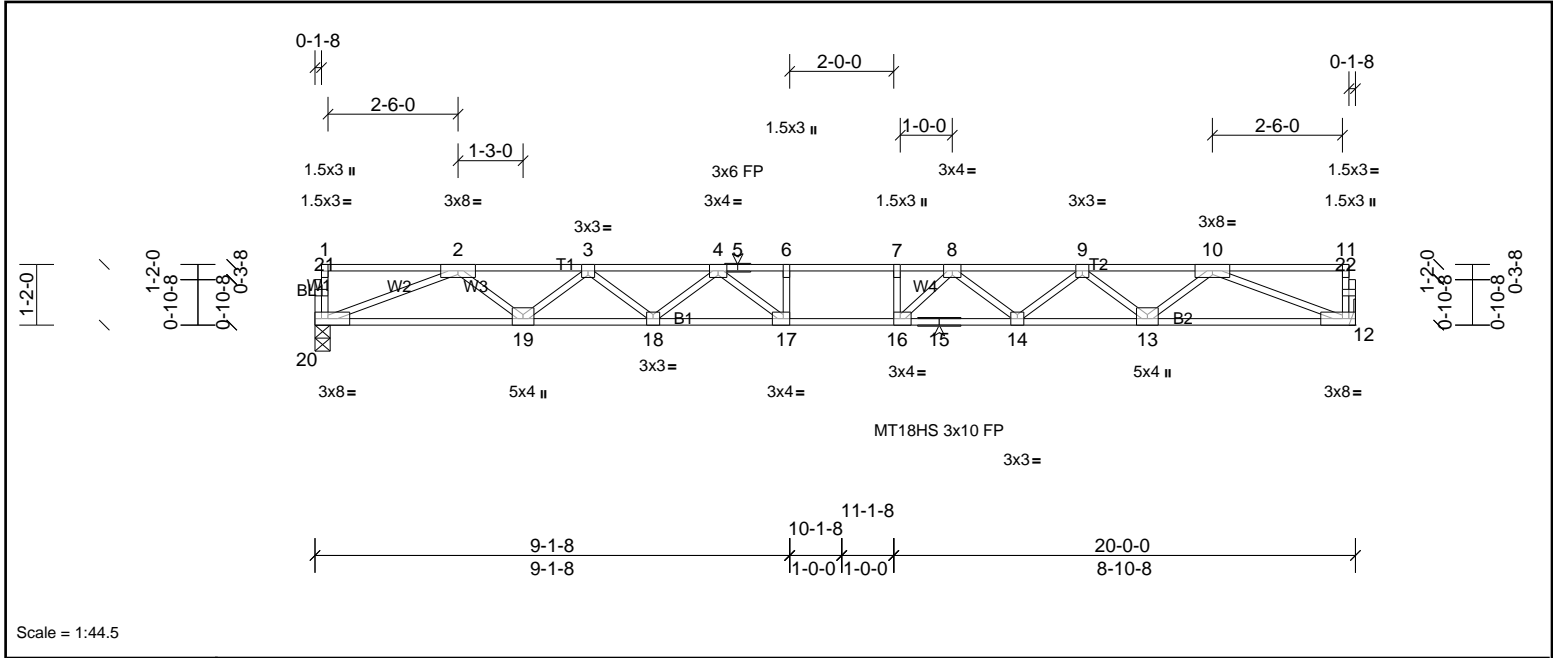
Job 72436320	Truss F203	Truss Type Truss	Qty 2	Ply 1	MUNGO HOMES - MCDOWELL B 2ND FLR Job Reference (optional)
-----------------	---------------	---------------------	----------	----------	--

UFP Mid Atlantic LLC, 5631 S. NC 62, Burlington, NC, Joy Perry

Run: 8.81 S Sep 13 2024 Print: 8.810 S Sep 13 2024 MiTek Industries, Inc. Thu Nov 21 07:55:14

Page: 1

ID:q6xmDaGgGpr4T8wcGw4bQWzKH9V-Zphay3jYNndAdWTO\_lexDOX21CRJnu\_vHOM1eyH1hB



Scale = 1:44.5

Plate Offsets (X, Y):	[16:0-1-8,Edge], [17:0-1-8,Edge]											
<b>Loading</b>	(psf)	<b>Spacing</b>	2-0-0	<b>CSI</b>		<b>DEFL</b>	in	(loc)	l/defl	L/d	<b>PLATES</b>	<b>GRIP</b>
TCLL	40.0	Plate Grip DOL	1.00	TC	0.76	Vert(LL)	-0.44	16-17	>543	480	MT18HS	244/190
TCDL	10.0	Lumber DOL	1.00	BC	0.65	Vert(CT)	-0.60	16-17	>395	360	MT20	244/190
BCLL	0.0	Rep Stress Incr	YES	WB	0.71	Horz(CT)	0.09	12	n/a	n/a		
BCDL	5.0	Code	IRC2015/TPI2014	Matrix-SH							Weight: 97 lb	FT = 20%F, 12%E

<b>LUMBER</b>		<b>BRACING</b>	
TOP CHORD	2x4 SP No.1(flat)	TOP CHORD	Structural wood sheathing directly applied or 5-0-15 oc purlins, except end verticals.
BOT CHORD	2x4 SP SS(flat)	BOT CHORD	Rigid ceiling directly applied or 10-0-0 oc bracing.
WEBS	2x4 SP No.3(flat)		
OTHERS	2x4 SP No.3(flat)		

**REACTIONS** (lb/size) 12=1080/ Mechanical, (min. 0-1-8), 20=1080/0-3-8, (min. 0-1-8)

**FORCES** (lb) - Max. Comp./Max. Ten. - All forces 250 (lb) or less except when shown.  
 TOP CHORD 2-3=-3220/0, 3-4=-4454/0, 4-5=-5093/0, 5-6=-5093/0, 6-7=-5093/0, 7-8=-5093/0, 8-9=-4449/0, 9-10=-3221/0  
 BOT CHORD 19-20=0/2411, 18-19=0/3988, 17-18=0/4888, 16-17=0/5093, 15-16=0/4891, 14-15=0/4891, 13-14=0/3987, 12-13=0/2411  
 WEBS 6-17=-297/18, 7-16=-345/32, 2-20=-2587/0, 2-19=0/1054, 3-19=-1000/0, 3-18=0/606, 4-18=-565/0, 4-17=-166/671, 10-12=-2587/0, 10-13=0/1055, 9-13=-997/0, 9-14=0/601, 8-14=-579/0, 8-16=-159/686

- NOTES**
- 1) Unbalanced floor live loads have been considered for this design.
  - 2) All plates are MT20 plates unless otherwise indicated.
  - 3) This truss is designed in accordance with the 2015 International Residential Code sections R502.11.1 and R802.10.2 and referenced standard ANSI/TPI 1.
  - 4) Recommend 2x6 strongbacks, on edge, spaced at 10-00-00 oc and fastened to each truss with 3-10d (0.131" X 3") nails. Strongbacks to be attached to walls at their outer ends or restrained by other means.



This design is based upon parameters shown, and is for an individual building component to be installed and loaded vertically. Applicability of design parameters and proper incorporation of component is responsibility of the Building Designer. Building Designer shall verify all design information on this sheet for conformance with conditions and requirements of the specific building and governing codes and ordinances. Building Designer accepts responsibility for the correctness or accuracy of the design information as it may relate to a specific building. Certification is valid only when truss is fabricated by a UFPI plant. Bracing shown is for lateral support of truss members only and does not replace erection and permanent bracing. Refer to Building Component Safety Information (BCSI) for general guidance regarding storage, erection and bracing available from SBCA and Truss Plate Institute.



Job 72436320	Truss F204	Truss Type Truss	Qty 4	Ply 1	MUNGO HOMES - MCDOWELL B 2ND FLR Job Reference (optional)
-----------------	---------------	---------------------	----------	----------	--

UFP Mid Atlantic LLC, 5631 S. NC 62, Burlington, NC, Joy Perry

Run: 8.81 S Sep 13 2024 Print: 8.810 S Sep 13 2024 MiTek Industries, Inc. Thu Nov 21 07:55:14

Page: 1

ID:q6xmDaGgGpr4T8wcGw4bQWzKH9V-Zphay3jYNndAdWTO\_lexDOX20CRHmb\_vHOM1eyH1hB

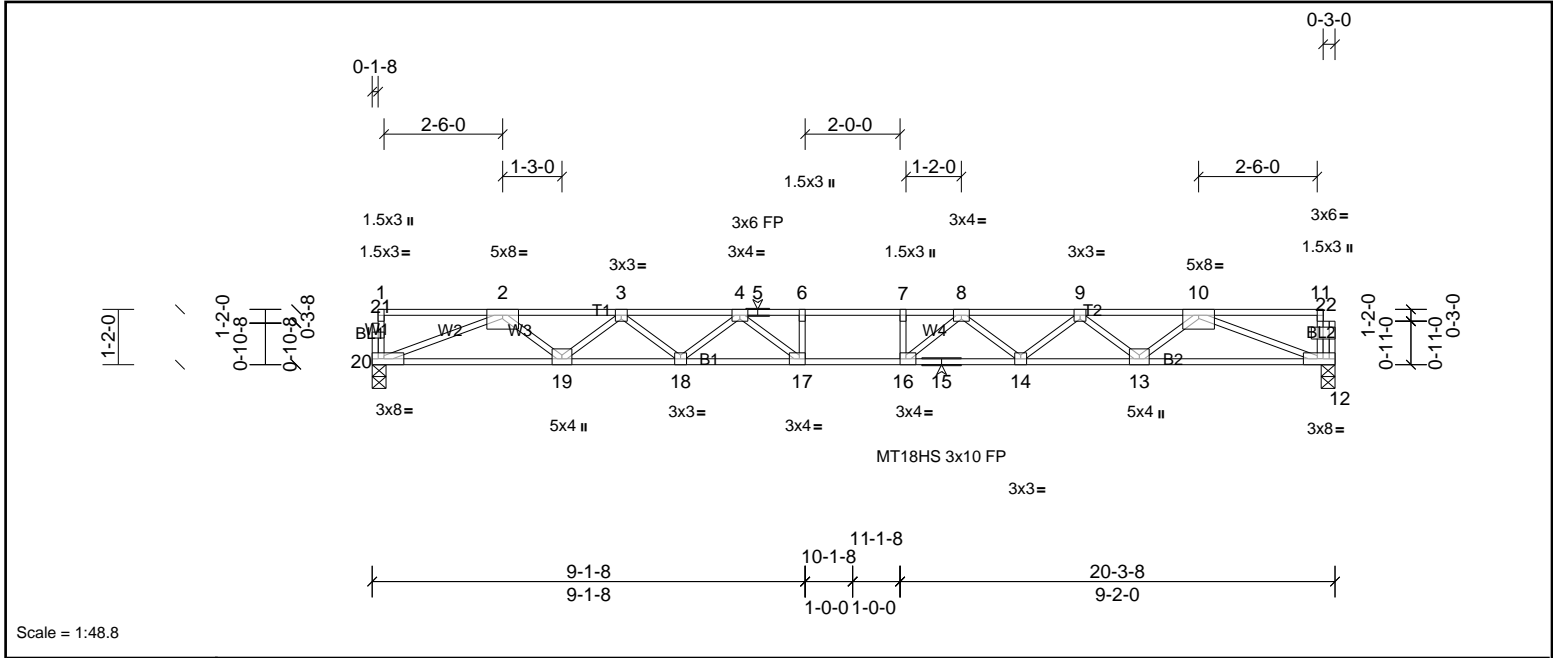


Plate Offsets (X, Y): [12:0-3-8,Edge], [16:0-1-8,Edge], [17:0-1-8,Edge]

Loading	(psf)	Spacing	2-0-0	CSI	DEFLL	in	(loc)	l/defl	L/d	PLATES	GRIP	
TCLL	40.0	Plate Grip DOL	1.00	TC	0.76	Vert(LL)	-0.46	16-17	>527	480	MT18HS	244/190
TCDL	10.0	Lumber DOL	1.00	BC	0.65	Vert(CT)	-0.63	16-17	>383	360	MT20	244/190
BCLL	0.0	Rep Stress Incr	YES	WB	0.73	Horz(CT)	0.10	12	n/a	n/a		
BCDL	5.0	Code	IRC2015/TPI2014	Matrix-SH							Weight: 100 lb	FT = 20%F, 12%E

LUMBER	BRACING
TOP CHORD	TOP CHORD
BOT CHORD	BOT CHORD
WEBS	
OTHERS	

**REACTIONS** (lb/size) 12=1086/0-3-8, (min. 0-1-8), 20=1093/0-3-8, (min. 0-1-8)

**FORCES** (lb) - Max. Comp./Max. Ten. - All forces 250 (lb) or less except when shown.

TOP CHORD 2-3=-3267/0, 3-4=-4529/0, 4-5=-5213/0, 5-6=-5213/0, 6-7=-5213/0, 7-8=-5213/0, 8-9=-4551/0, 9-10=-3307/0

BOT CHORD 19-20=0/2442, 18-19=0/4050, 17-18=0/4980, 16-17=0/5213, 15-16=0/4996, 14-15=0/4996, 13-14=0/4081, 12-13=0/2489

WEBS 6-17=-309/11, 7-16=-319/20, 2-20=-2620/0, 2-19=0/1074, 3-19=-1019/0, 3-18=0/624, 4-18=-588/0, 4-17=-151/704, 10-12=-2656/0, 10-13=0/1064, 9-13=-1008/0, 9-14=0/612, 8-14=-579/0, 8-16=-161/695

- NOTES**
- 1) Unbalanced floor live loads have been considered for this design.
  - 2) All plates are MT20 plates unless otherwise indicated.
  - 3) This truss is designed in accordance with the 2015 International Residential Code sections R502.11.1 and R802.10.2 and referenced standard ANSI/TPI 1.
  - 4) Recommend 2x6 strongbacks, on edge, spaced at 10-00-00 oc and fastened to each truss with 3-10d (0.131" X 3") nails. Strongbacks to be attached to walls at their outer ends or restrained by other means.



This design is based upon parameters shown, and is for an individual building component to be installed and loaded vertically. Applicability of design parameters and proper incorporation of component is responsibility of the Building Designer. Building Designer shall verify all design information on this sheet for conformance with conditions and requirements of the specific building and governing codes and ordinances. Building Designer accepts responsibility for the correctness or accuracy of the design information as it may relate to a specific building. Certification is valid only when truss is fabricated by a UFPI plant. Bracing shown is for lateral support of truss members only and does not replace erection and permanent bracing. Refer to Building Component Safety Information (BCSI) for general guidance regarding storage, erection and bracing available from SBCA and Truss Plate Institute.



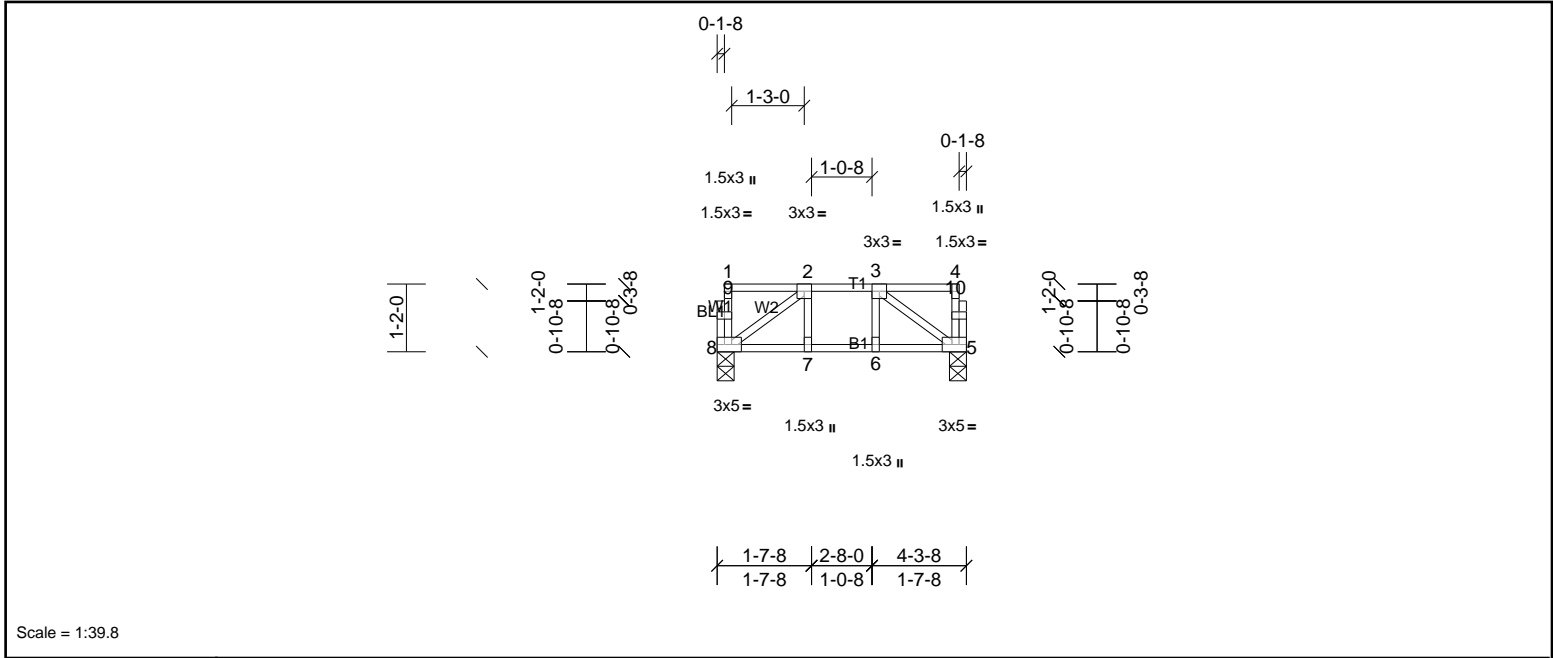
Job 72436320	Truss F205	Truss Type Truss	Qty 1	Ply 1	MUNGO HOMES - MCDOWELL B 2ND FLR Job Reference (optional)
-----------------	---------------	---------------------	----------	----------	--

UFP Mid Atlantic LLC, 5631 S. NC 62, Burlington, NC, Joy Perry

Run: 8.81 S Sep 13 2024 Print: 8.810 S Sep 13 2024 MiTek Industries, Inc. Thu Nov 21 07:55:15

Page: 1

ID:q6xmDaGgGpr4T8wcGw4bQWzKH9V-1?EyAPkA8511Fg2aYS9Alb3Npbw9aPE88x7JZ4yH1hA



Scale = 1:39.8

Plate Offsets (X, Y): [5:0-2-0,Edge], [8:0-2-0,Edge]

Loading	(psf)	Spacing	2-0-0	CSI		DEFL	in	(loc)	l/defl	L/d	PLATES	GRIP
TCLL	40.0	Plate Grip DOL	1.00	TC	0.11	Vert(LL)	0.00	7-8	>999	480	MT20	244/190
TCDL	10.0	Lumber DOL	1.00	BC	0.10	Vert(CT)	-0.01	7-8	>999	360		
BCLL	0.0	Rep Stress Incr	YES	WB	0.06	Horz(CT)	0.00	5	n/a	n/a		
BCDL	5.0	Code	IRC2015/TPI2014	Matrix-SH							Weight: 25 lb	FT = 20%F, 12%E

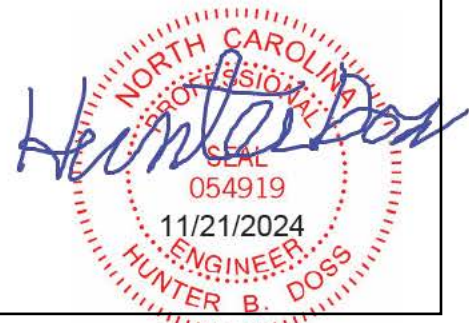
LUMBER		BRACING	
TOP CHORD	2x4 SP No.2(flat)	TOP CHORD	Structural wood sheathing directly applied or 4-3-8 oc purlins, except end verticals.
BOT CHORD	2x4 SP No.2(flat)	BOT CHORD	Rigid ceiling directly applied or 10-0-0 oc bracing.
WEBS	2x4 SP No.3(flat)		
OTHERS	2x4 SP No.3(flat)		

**REACTIONS** (lb/size) 5=216/0-3-8, (min. 0-1-8), 8=216/0-3-8, (min. 0-1-8)

**FORCES** (lb) - Max. Comp./Max. Ten. - All forces 250 (lb) or less except when shown.

**WEBS** 3-5=-258/0, 2-8=-258/0

- NOTES**
- 1) Unbalanced floor live loads have been considered for this design.
  - 2) This truss is designed in accordance with the 2015 International Residential Code sections R502.11.1 and R802.10.2 and referenced standard ANSI/TPI 1.
  - 3) Recommend 2x6 strongbacks, on edge, spaced at 10-00-00 oc and fastened to each truss with 3-10d (0.131" X 3") nails. Strongbacks to be attached to walls at their outer ends or restrained by other means.



This design is based upon parameters shown, and is for an individual building component to be installed and loaded vertically. Applicability of design parameters and proper incorporation of component is responsibility of the Building Designer. Building Designer shall verify all design information on this sheet for conformance with conditions and requirements of the specific building and governing codes and ordinances. Building Designer accepts responsibility for the correctness or accuracy of the design information as it may relate to a specific building. Certification is valid only when truss is fabricated by a UFPI plant. Bracing shown is for lateral support of truss members only and does not replace erection and permanent bracing. Refer to Building Component Safety Information (BCSI) for general guidance regarding storage, erection and bracing available from SBCA and Truss Plate Institute.



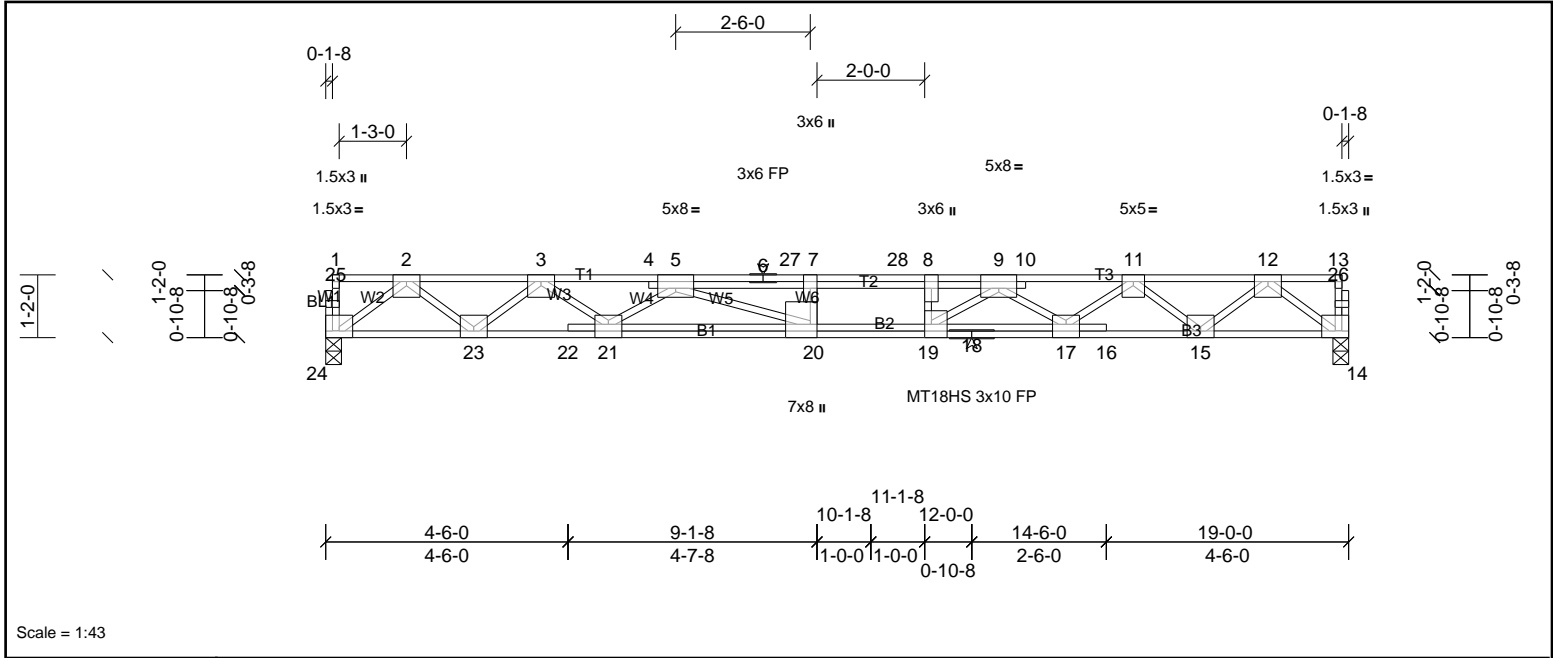
Job 72436320	Truss F206	Truss Type Truss	Qty 15	Ply 1	MUNGO HOMES - MCDOWELL B 2ND FLR Job Reference (optional)
-----------------	---------------	---------------------	-----------	----------	--

UFP Mid Atlantic LLC, 5631 S. NC 62, Burlington, NC, Joy Perry

Run: 8.81 S Sep 13 2024 Print: 8.810 S Sep 13 2024 MiTek Industries, Inc. Thu Nov 21 07:55:15

Page: 1

ID:q6xmDaGgGpr4T8wcGw4bQWzKH9V-1?EyAPkA8511Fg2aYS9Alb3CKbnoaDz88x7JZ4yH1hA



Scale = 1:43

Plate Offsets (X, Y):	[5:0-4-0,Edge], [8:0-3-0,Edge], [9:0-4-0,Edge], [14:Edge,0-1-8], [17:0-3-0,Edge], [19:0-3-0,Edge], [20:0-3-0,Edge], [21:0-3-0,Edge]
-----------------------	---

Loading	(psf)	Spacing	2-0-0	CSI	DEFL	in	(loc)	l/defl	L/d	PLATES	GRIP	
TCLL	40.0	Plate Grip DOL	1.00	TC	0.79	Vert(LL)	-0.26	20-21	>865	480	MT18HS	244/190
TCDL	30.0	Lumber DOL	1.00	BC	0.70	Vert(CT)	-0.51	20-21	>440	360	MT20	244/190
BCLL	0.0	Rep Stress Incr	NO	WB	0.78	Horz(CT)	0.08	14	n/a	n/a		
BCDL	5.0	Code	IRC2015/TPI2014	Matrix-SH								
											Weight: 117 lb	FT = 20%F, 12%E

LUMBER	BRACING
TOP CHORD 2x4 SP SS(flat)	TOP CHORD Structural wood sheathing directly applied or 5-0-13 oc purlins, except end verticals.
BOT CHORD 2x4 SP SS(flat)	BOT CHORD Rigid ceiling directly applied or 10-0-0 oc bracing.
WEBS 2x4 SP No.3(flat)	
OTHERS 2x4 SP No.3(flat)	

REACTIONS	(lb/size)	14=1434/0-3-8, (min. 0-1-8), 24=1433/0-3-8, (min. 0-1-8)
<b>FORCES</b>	(lb) - Max. Comp./Max. Ten. - All forces 250 (lb) or less except when shown.	
TOP CHORD	2-3=-3048/0, 3-4=-5393/0, 4-5=-5382/0, 5-6=-7407/0, 6-27=-7407/0, 7-27=-7407/0, 7-28=-7407/0, 8-28=-7407/0, 8-9=-7407/0, 9-10=-5314/0, 10-11=-5329/0, 11-12=-3065/0	
BOT CHORD	23-24=0/1803, 22-23=0/4349, 21-22=0/4340, 20-21=0/6405, 19-20=0/7407, 18-19=0/6408, 17-18=0/6408, 16-17=0/4341, 15-16=0/4351, 14-15=0/1804	
WEBS	7-20=-382/0, 8-19=-606/0, 2-24=-2259/0, 2-23=0/1620, 3-23=-1694/0, 3-21=0/1326, 5-21=-1255/0, 5-20=0/1372, 12-14=-2260/0, 12-15=0/1641, 11-15=-1675/0, 11-17=0/1242, 9-17=-1338/0, 9-19=0/1465	

- NOTES**
- Unbalanced floor live loads have been considered for this design.
  - All plates are MT20 plates unless otherwise indicated.
  - All plates are 5x6 MT20 unless otherwise indicated.
  - This truss is designed in accordance with the 2015 International Residential Code sections R502.11.1 and R802.10.2 and referenced standard ANSI/TPI 1.
  - Load case(s) 1 has/have been modified. Building designer must review loads to verify that they are correct for the intended use of this truss.
  - Recommend 2x6 strongbacks, on edge, spaced at 10-00-00 oc and fastened to each truss with 3-10d (0.131" X 3") nails. Strongbacks to be attached to walls at their outer ends or restrained by other means.

LOAD CASE(S)	Standard
1) Dead + Floor Live (balanced): Lumber Increase=1.00, Plate Increase=1.00	
Uniform Loads (lb/ft)	
Vert: 14-24=-10, 1-27=-140, 27-28=-176, 13-28=-140	



This design is based upon parameters shown, and is for an individual building component to be installed and loaded vertically. Applicability of design parameters and proper incorporation of component is responsibility of the Building Designer. Building Designer shall verify all design information on this sheet for conformance with conditions and requirements of the specific building and governing codes and ordinances. Building Designer accepts responsibility for the correctness or accuracy of the design information as it may relate to a specific building. Certification is valid only when truss is fabricated by a UFPI plant. Bracing shown is for lateral support of truss members only and does not replace erection and permanent bracing. Refer to Building Component Safety Information (BCSI) for general guidance regarding storage, erection and bracing available from SBCA and Truss Plate Institute.



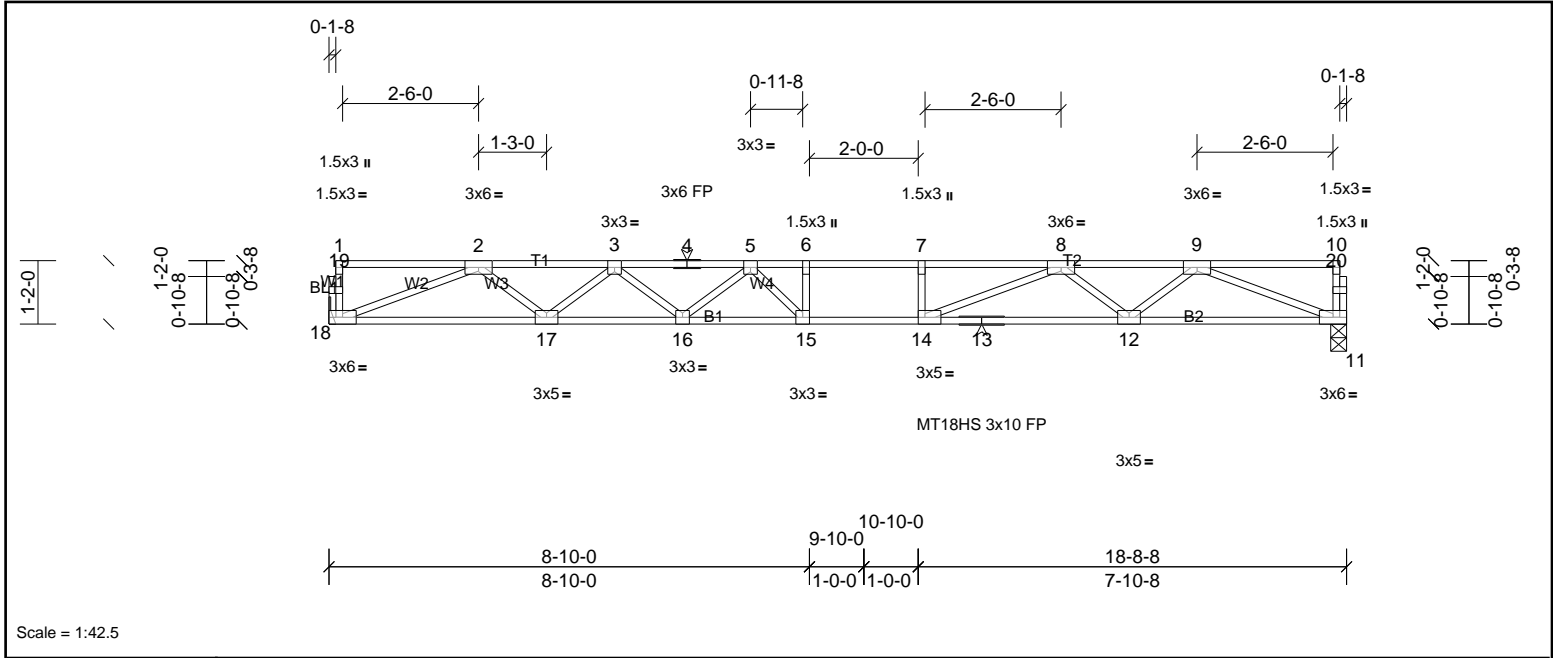
Job 72436320	Truss F207	Truss Type Truss	Qty 3	Ply 1	MUNGO HOMES - MCDOWELL B 2ND FLR Job Reference (optional)
-----------------	---------------	---------------------	----------	----------	--

UFP Mid Atlantic LLC, 5631 S. NC 62, Burlington, NC, Joy Perry

Run: 8.81 S Sep 13 2024 Print: 8.810 S Sep 13 2024 MiTek Industries, Inc. Thu Nov 21 07:55:15

Page: 1

ID:q6xmDaGgGpr4T8wcGw4bQWzKH9V-1?EyAPkA851Fg2aYS9Alb3B1bnCaF88x7JZ4yH1hA



Scale = 1:42.5

Plate Offsets (X, Y):	[14:0-1-8,Edge]											
<b>Loading</b>	(psf)	<b>Spacing</b>	2-0-0	<b>CSI</b>		<b>DEFL</b>	in	(loc)	l/defl	L/d	<b>PLATES</b>	<b>GRIP</b>
TCLL	40.0	Plate Grip DOL	1.00	TC	0.87	Vert(LL)	-0.35	15	>624	480	MT18HS	244/190
TCDL	10.0	Lumber DOL	1.00	BC	0.67	Vert(CT)	-0.49	15-16	>454	360	MT20	244/190
BCLL	0.0	Rep Stress Incr	YES	WB	0.66	Horz(CT)	0.08	11	n/a	n/a		
BCDL	5.0	Code	IRC2015/TPI2014	Matrix-SH							Weight: 91 lb	FT = 20%F, 12%E

<b>LUMBER</b>		<b>BRACING</b>	
TOP CHORD	2x4 SP No.1(flat)	TOP CHORD	Structural wood sheathing directly applied or 2-2-0 oc purlins, except end verticals.
BOT CHORD	2x4 SP SS(flat)	BOT CHORD	Rigid ceiling directly applied or 10-0-0 oc bracing.
WEBS	2x4 SP No.3(flat)		
OTHERS	2x4 SP No.3(flat)		

<b>REACTIONS</b>	(lb/size)	11=1009/0-3-8, (min. 0-1-8), 18=1009/ Mechanical, (min. 0-1-8)
<b>FORCES</b>	(lb) - Max. Comp./Max. Ten. - All forces 250 (lb) or less except when shown.	
TOP CHORD		2-3=-2957/0, 3-4=-4024/0, 4-5=-4024/0, 5-6=-4436/0, 6-7=-4436/0, 7-8=-4436/0, 8-9=-2958/0
BOT CHORD		17-18=0/2233, 16-17=0/3640, 15-16=0/4368, 14-15=0/4436, 13-14=0/3636, 12-13=0/3636, 11-12=0/2234
WEBS		6-15=-281/87, 7-14=-281/0, 2-18=-2395/0, 2-17=0/942, 3-17=-890/0, 3-16=0/500, 5-16=-481/0, 5-15=-278/548, 9-11=-2397/0, 9-12=0/941, 8-12=-883/0, 8-14=0/1097

- NOTES**
- 1) Unbalanced floor live loads have been considered for this design.
  - 2) All plates are MT20 plates unless otherwise indicated.
  - 3) This truss is designed in accordance with the 2015 International Residential Code sections R502.11.1 and R802.10.2 and referenced standard ANSI/TPI 1.
  - 4) Recommend 2x6 strongbacks, on edge, spaced at 10-00-00 oc and fastened to each truss with 3-10d (0.131" X 3") nails. Strongbacks to be attached to walls at their outer ends or restrained by other means.



This design is based upon parameters shown, and is for an individual building component to be installed and loaded vertically. Applicability of design parameters and proper incorporation of component is responsibility of the Building Designer. Building Designer shall verify all design information on this sheet for conformance with conditions and requirements of the specific building and governing codes and ordinances. Building Designer accepts responsibility for the correctness or accuracy of the design information as it may relate to a specific building. Certification is valid only when truss is fabricated by a UFPI plant. Bracing shown is for lateral support of truss members only and does not replace erection and permanent bracing. Refer to Building Component Safety Information (BCSI) for general guidance regarding storage, erection and bracing available from SBCA and Truss Plate Institute.





Job 72436320	Truss FG1	Truss Type Truss	Qty 1	Ply 1	MUNGO HOMES - MCDOWELL B 2ND FLR Job Reference (optional)
-----------------	--------------	---------------------	----------	----------	--

UFP Mid Atlantic LLC, 5631 S. NC 62, Burlington, NC, Joy Perry

Run: 8.81 S Sep 13 2024 Print: 8.810 S Sep 13 2024 MiTek Industries, Inc. Thu Nov 21 07:55:15

Page: 1

ID:q6xmDaGgGpr4T8wcGw4bQWzKH9V-1?EyAPkA85l1Fg2aYS9Alb3CRblEaGf88x7JZ4yH1hA

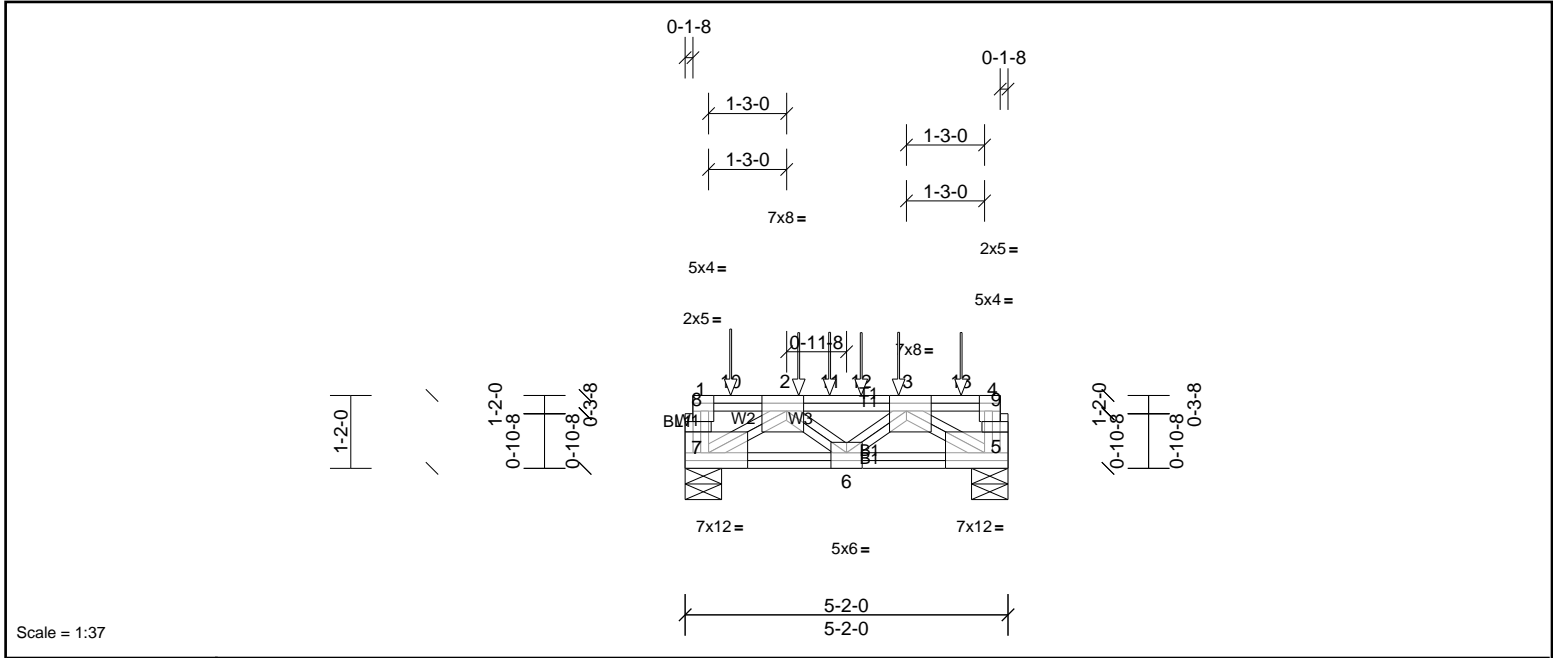


Plate Offsets (X, Y): [1:Edge,0-3-0], [2:0-3-4,Edge], [3:0-3-4,Edge], [4:0-1-8,Edge], [5:Edge,0-3-0], [6:0-3-0,Edge], [7:Edge,0-3-0], [8:0-1-8,0-0-11], [9:0-1-8,0-0-11]

Loading	(psf)	Spacing	2-0-0	CSI	DEFL	in	(loc)	l/defl	L/d	PLATES	GRIP	
TCLL	40.0	Plate Grip DOL	1.00	TC	0.78	Vert(LL)	-0.03	6	>999	480	MT20	244/190
TCDL	10.0	Lumber DOL	1.00	BC	0.80	Vert(CT)	-0.04	6	>999	360		
BCLL	0.0	Rep Stress Incr	NO	WB	0.61	Horz(CT)	0.02	5	n/a	n/a		
BCDL	5.0	Code	IRC2015/TPI2014	Matrix-SH							Weight: 51 lb	FT = 20%F, 12%E

LUMBER		BRACING	
TOP CHORD	2x4 SP No.1(flat)	TOP CHORD	Structural wood sheathing directly applied or 5-2-0 oc purlins, except end verticals.
BOT CHORD	2x4 SP No.2(flat)	BOT CHORD	Rigid ceiling directly applied or 10-0-0 oc bracing.
WEBS	2x4 SP No.3(flat)		
OTHERS	2x4 SP No.3(flat)		

**REACTIONS** (lb/size) 5=3202/0-7-0, (min. 0-1-10), 7=4036/0-7-0, (min. 0-2-1)

**FORCES** (lb) - Max. Comp./Max. Ten. - All forces 250 (lb) or less except when shown.  
 TOP CHORD 7-8=-1058/0, 1-8=-1016/0, 5-9=-440/0, 4-9=-423/0, 2-11=-4403/0, 11-12=-4403/0, 3-12=-4403/0  
 BOT CHORD 6-7=0/4607, 5-6=0/4230  
 WEBS 2-7=-5404/0, 2-6=-279/0, 3-5=-5005/0

- NOTES**
- This truss is designed in accordance with the 2015 International Residential Code sections R502.11.1 and R802.10.2 and referenced standard ANSI/TPI 1.
  - Recommend 2x6 strongbacks, on edge, spaced at 10-00-00 oc and fastened to each truss with 3-10d (0.131" X 3") nails. Strongbacks to be attached to walls at their outer ends or restrained by other means.
  - Hanger(s) or other connection device(s) shall be provided sufficient to support concentrated load(s) 2011 lb down at 0-8-12, 909 lb down at 1-9-13, 980 lb down at 2-3-12, 909 lb down at 2-9-13, and 980 lb down at 3-5-0, and 934 lb down at 4-5-0 on top chord. The design/selection of such connection device(s) is the responsibility of others.
  - In the LOAD CASE(S) section, loads applied to the face of the truss are noted as front (F) or back (B).

**LOAD CASE(S)** Standard

- Dead + Floor Live (balanced): Lumber Increase=1.00, Plate Increase=1.00  
 Uniform Loads (lb/ft)  
 Vert: 5-7=-10, 1-4=-100  
 Concentrated Loads (lb)  
 Vert: 2=-909 (F), 3=-980 (B), 10=-2011 (B), 11=-980 (B), 12=-909 (F), 13=-934 (F)



This design is based upon parameters shown, and is for an individual building component to be installed and loaded vertically. Applicability of design parameters and proper incorporation of component is responsibility of the Building Designer. Building Designer shall verify all design information on this sheet for conformance with conditions and requirements of the specific building and governing codes and ordinances. Building Designer accepts responsibility for the correctness or accuracy of the design information as it may relate to a specific building. Certification is valid only when truss is fabricated by a UFPI plant. Bracing shown is for lateral support of truss members only and does not replace erection and permanent bracing. Refer to Building Component Safety Information (BCSI) for general guidance regarding storage, erection and bracing available from SBCA and Truss Plate Institute.



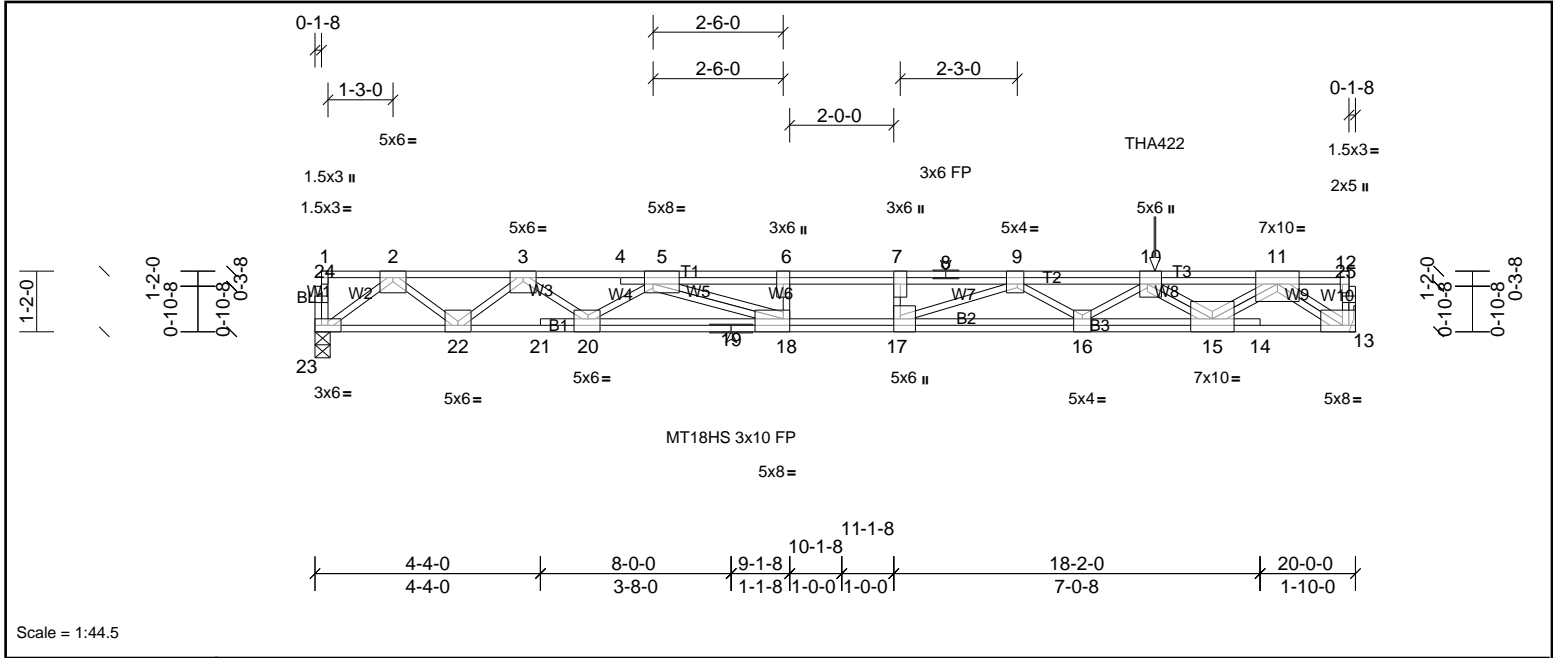
Job 72436320	Truss FG2	Truss Type Truss	Qty 1	Ply 1	MUNGO HOMES - MCDOWELL B 2ND FLR Job Reference (optional)
-----------------	--------------	---------------------	----------	----------	--

UFP Mid Atlantic LLC, 5631 S. NC 62, Burlington, NC, Joy Perry

Run: 8.81 S Sep 13 2024 Print: 8.810 S Sep 13 2024 MiTek Industries, Inc. Thu Nov 21 07:55:15

Page: 1

ID:q6xmDaGgGr4T8wcGw4bQWzKH9V-1?EyAPkA851Fg2aYS9Alb3CGbmQaEL88x7JZ4yH1hA



Scale = 1:44.5

Plate Offsets (X, Y):	[5:0-2-0,Edge], [7:0-3-0,Edge], [9:0-1-8,Edge], [10:0-3-0,Edge], [12:0-3-0,Edge], [13:Edge,0-1-8], [16:0-2-0,Edge], [17:0-3-0,Edge], [18:0-1-8,Edge], [20:0-2-12,Edge]
-----------------------	--

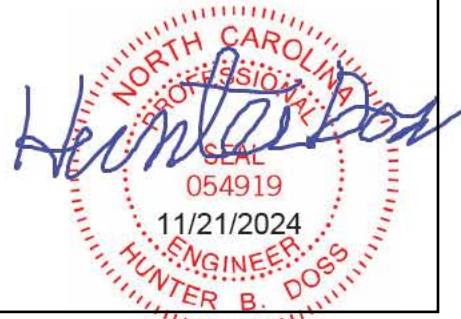
Loading	(psf)	Spacing	1-4-0	CSI	DEFL	in	(loc)	l/defl	L/d	PLATES	GRIP
TCLL	40.0	Plate Grip DOL	1.00	TC	0.79	Vert(LL)	-0.36	16-17	>657	480	MT18HS 244/190
TCDL	10.0	Lumber DOL	1.00	BC	0.72	Vert(CT)	-0.60	16-17	>394	360	MT20 244/190
BCLL	0.0	Rep Stress Incr	NO	WB	0.76	Horz(CT)	0.09	13	n/a	n/a	
BCDL	5.0	Code	IRC2015/TPI2014	Matrix-SH							Weight: 147 lb FT = 20%F, 12%E

LUMBER	BRACING
TOP CHORD 2x4 SP No.1(flat)	TOP CHORD Structural wood sheathing directly applied or 5-0-13 oc purlins, except end verticals.
BOT CHORD 2x4 SP SS(flat)	BOT CHORD Rigid ceiling directly applied or 10-0-0 oc bracing.
WEBS 2x4 SP No.3(flat)	
OTHERS 2x4 SP No.3(flat)	

REACTIONS	(lb/size)	13=2068/ Mechanical, (min. 0-1-8), 23=1154/0-3-8, (min. 0-1-8)
<b>FORCES</b>	(lb) - Max. Comp./Max. Ten. - All forces 250 (lb) or less except when shown.	
TOP CHORD	2-3=-2623/0, 3-4=-4931/0, 4-5=-4930/0, 5-6=-8106/0, 6-7=-8106/0, 7-8=-8106/0, 8-9=-8106/0, 9-10=-8255/0, 10-11=-5440/0	
BOT CHORD	22-23=0/1475, 21-22=0/3810, 20-21=0/3804, 19-20=0/6294, 18-19=0/6294, 17-18=0/8106, 16-17=0/8430, 15-16=0/7907, 14-15=0/2880, 13-14=0/2885	
WEBS	6-18=-528/0, 10-16=0/490, 9-16=-425/5, 9-17=-819/627, 10-15=-3121/0, 2-23=-1849/0, 2-22=0/1494, 3-22=-1544/0, 3-20=0/1425, 5-20=-1619/0, 5-18=0/2211, 11-15=0/3183, 11-13=-3524/0	

- NOTES**
- Unbalanced floor live loads have been considered for this design.
  - All plates are MT20 plates unless otherwise indicated.
  - This truss is designed in accordance with the 2015 International Residential Code sections R502.11.1 and R802.10.2 and referenced standard ANSI/TPI 1.
  - Load case(s) 1, 2, 3, 4, 5, 6 has/have been modified. Building designer must review loads to verify that they are correct for the intended use of this truss.
  - Recommend 2x6 strongbacks, on edge, spaced at 10-00-00 oc and fastened to each truss with 3-10d (0.131" X 3") nails. Strongbacks to be attached to walls at their outer ends or restrained by other means.
  - Use Simpson Strong-Tie THA422 (6-16d Girder, 6-10d Truss) or equivalent at 16-1-12 from the left end to connect truss(es) to front face of top chord.
  - Fill all nail holes where hanger is in contact with lumber.
  - In the LOAD CASE(S) section, loads applied to the face of the truss are noted as front (F) or back (B).

LOAD CASE(S)	Standard
1) Dead + Floor Live (balanced): Lumber Increase=1.00, Plate Increase=1.00	Uniform Loads (lb/ft) Vert: 13-23=-7, 1-4=-67, 4-8=-107, 8-12=-67 Concentrated Loads (lb) Vert: 10=-1530 (F)
2) Dead: Lumber Increase=1.00, Plate Increase=1.00	Uniform Loads (lb/ft) Vert: 13-23=-7, 1-4=-67, 4-8=-107, 8-12=-67 Concentrated Loads (lb) Vert: 10=-1530 (F)
3) 1st chase Dead + Floor Live (unbalanced): Lumber Increase=1.00, Plate Increase=1.00	Uniform Loads (lb/ft) Vert: 13-23=-7, 1-4=-67, 4-7=-107, 7-8=-54, 8-12=-13 Concentrated Loads (lb) Vert: 10=-584 (F)
4) 2nd chase Dead + Floor Live (unbalanced): Lumber Increase=1.00, Plate Increase=1.00	Uniform Loads (lb/ft) Vert: 13-23=-7, 1-4=-13, 4-6=-54, 6-8=-107, 8-12=-67



This design is based upon parameters shown, and is for an individual building component to be installed and loaded vertically. Applicability of design parameters and proper incorporation of component is responsibility of the Building Designer. Building Designer shall verify all design information on this sheet for conformance with conditions and requirements of the specific building and governing codes and ordinances. Building Designer accepts responsibility for the correctness or accuracy of the design information as it may relate to a specific building. Certification is valid only when truss is fabricated by a UFPI plant. Bracing shown is for lateral support of truss members only and does not replace erection and permanent bracing. Refer to Building Component Safety Information (BCSI) for general guidance regarding storage, erection and bracing available from SBCA and Truss Plate Institute.



Job 72436320	Truss FG2	Truss Type Truss	Qty 1	Ply 1	MUNGO HOMES - MCDOWELL B 2ND FLR Job Reference (optional)
-----------------	--------------	---------------------	----------	----------	--

UFP Mid Atlantic LLC, 5631 S. NC 62, Burlington, NC, Joy Perry

Run: 8.81 S Sep 13 2024 Print: 8.810 S Sep 13 2024 MiTek Industries, Inc. Thu Nov 21 07:55:15

Page: 2

ID:q6xmDaGgGpr4T8wcGw4bQWzKH9V-1?EyAPkA851Fg2aYS9Alb3CGbmQaEL88x7JZ4yH1hA

Concentrated Loads (lb)

Vert: 10=-1584 (F)

5) 3rd chase Dead: Lumber Increase=1.00, Plate Increase=1.00

Uniform Loads (lb/ft)

Vert: 13-23=-7, 1-4=-67, 4-7=-107, 7-8=-54, 8-12=-13

Concentrated Loads (lb)

Vert: 10=-584 (F)

6) 4th chase Dead: Lumber Increase=1.00, Plate Increase=1.00

Uniform Loads (lb/ft)

Vert: 13-23=-7, 1-4=-13, 4-6=-54, 6-8=-107, 8-12=-67

Concentrated Loads (lb)

Vert: 10=-1584 (F)



This design is based upon parameters shown, and is for an individual building component to be installed and loaded vertically. Applicability of design parameters and proper incorporation of component is responsibility of the Building Designer. Building Designer shall verify all design information on this sheet for conformance with conditions and requirements of the specific building and governing codes and ordinances. Building Designer accepts responsibility for the correctness or accuracy of the design information as it may relate to a specific building. Certification is valid only when truss is fabricated by a UFPI plant. Bracing shown is for lateral support of truss members only and does not replace erection and permanent bracing. Refer to Building Component Safety Information (BCSI) for general guidance regarding storage, erection and bracing available from SBCA and Truss Plate Institute.



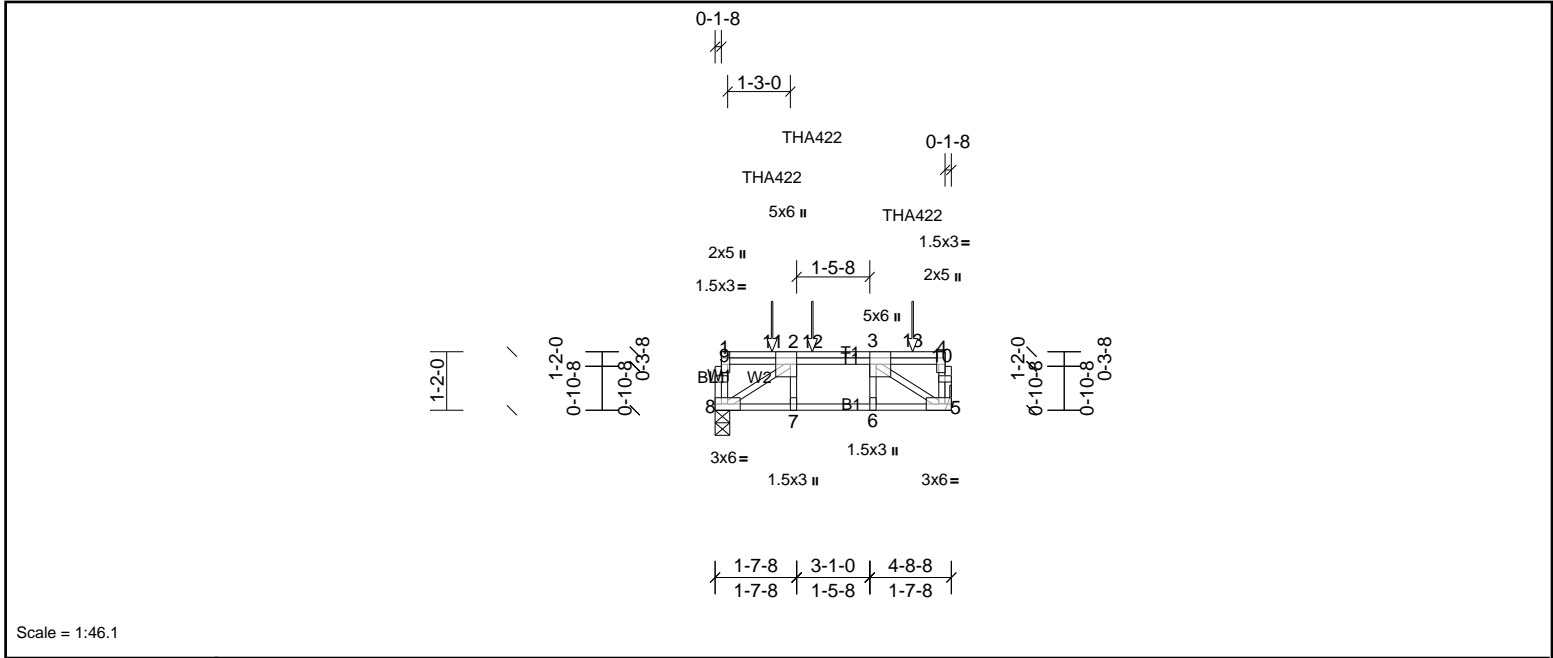
Job 72436320	Truss FG3	Truss Type Truss	Qty 1	Ply 1	MUNGO HOMES - MCDOWELL B 2ND FLR Job Reference (optional)
-----------------	--------------	---------------------	----------	----------	--

UFP Mid Atlantic LLC, 5631 S. NC 62, Burlington, NC, Joy Perry

Run: 8.81 S Sep 13 2024 Print: 8.810 S Sep 13 2024 MiTek Industries, Inc. Thu Nov 21 07:55:16

Page: 1

ID:q6xmDaGgGpr4T8wcGw4bQWzKH9V-VCoLNIllpvOtttdm5AgPlpcNj?3IJXHMbts6XyH1h9



Scale = 1:46.1

Plate Offsets (X, Y):	[2:0-3-0,Edge], [3:0-3-0,Edge], [4:0-3-0,Edge]											
<b>Loading</b>	(psf)	<b>Spacing</b>	2-0-0	<b>CSI</b>		<b>DEFL</b>	in	(loc)	l/defl	L/d	<b>PLATES</b>	<b>GRIP</b>
TCLL	40.0	Plate Grip DOL	1.00	TC	0.81	Vert(LL)	-0.04	7-8	>999	480	MT20	244/190
TCDL	10.0	Lumber DOL	1.00	BC	0.94	Vert(CT)	-0.05	7-8	>999	360		
BCLL	0.0	Rep Stress Incr	NO	WB	0.51	Horz(CT)	0.01	5	n/a	n/a		
BCDL	5.0	Code	IRC2015/TPI2014	Matrix-SH							Weight: 32 lb	FT = 20%F, 12%E

<b>LUMBER</b>		<b>BRACING</b>	
TOP CHORD	2x4 SP No.2(flat)	TOP CHORD	Structural wood sheathing directly applied or 4-8-8 oc purlins, except end verticals.
BOT CHORD	2x4 SP No.2(flat)	BOT CHORD	Rigid ceiling directly applied or 10-0-0 oc bracing.
WEBS	2x4 SP No.3(flat)		
OTHERS	2x4 SP No.3(flat)		

<b>REACTIONS</b>	(lb/size)	5=1597/ Mechanical, (min. 0-1-8), 8=1605/0-3-8, (min. 0-1-8)
	Max Grav	5=1597 (LC 1), 8=1612 (LC 3)

<b>FORCES</b>	(lb) - Max. Comp./Max. Ten. - All forces 250 (lb) or less except when shown.
TOP CHORD	8-9=-446/0, 1-9=-445/0, 5-10=-502/28, 4-10=-501/28, 2-12=-1804/0, 3-12=-1804/0
BOT CHORD	7-8=0/1804, 6-7=0/1804, 5-6=0/1804
WEBS	3-5=-2153/0, 2-8=-2156/0

- NOTES**
- Unbalanced floor live loads have been considered for this design.
  - This truss is designed in accordance with the 2015 International Residential Code sections R502.11.1 and R802.10.2 and referenced standard ANSI/TPI 1.
  - Recommend 2x6 strongbacks, on edge, spaced at 10-00-00 oc and fastened to each truss with 3-10d (0.131" X 3") nails. Strongbacks to be attached to walls at their outer ends or restrained by other means.
  - Use Simpson Strong-Tie THA422 (6-16d Girder, 6-10d Truss) or equivalent spaced at 2-0-0 oc max. starting at 1-1-10 from the left end to 3-11-4 to connect truss(es) to back face of top chord.
  - Fill all nail holes where hanger is in contact with lumber.
  - In the LOAD CASE(S) section, loads applied to the face of the truss are noted as front (F) or back (B).

<b>LOAD CASE(S)</b>	Standard
1)	Dead + Floor Live (balanced): Lumber Increase=1.00, Plate Increase=1.00
	Uniform Loads (lb/ft)
	Vert: 5-8=-10, 1-4=-100
	Concentrated Loads (lb)
	Vert: 11=-903 (B), 12=-900 (B), 13=-921 (B)



This design is based upon parameters shown, and is for an individual building component to be installed and loaded vertically. Applicability of design parameters and proper incorporation of component is responsibility of the Building Designer. Building Designer shall verify all design information on this sheet for conformance with conditions and requirements of the specific building and governing codes and ordinances. Building Designer accepts responsibility for the correctness or accuracy of the design information as it may relate to a specific building. Certification is valid only when truss is fabricated by a UFPI plant. Bracing shown is for lateral support of truss members only and does not replace erection and permanent bracing. Refer to Building Component Safety Information (BCSI) for general guidance regarding storage, erection and bracing available from SBCA and Truss Plate Institute.



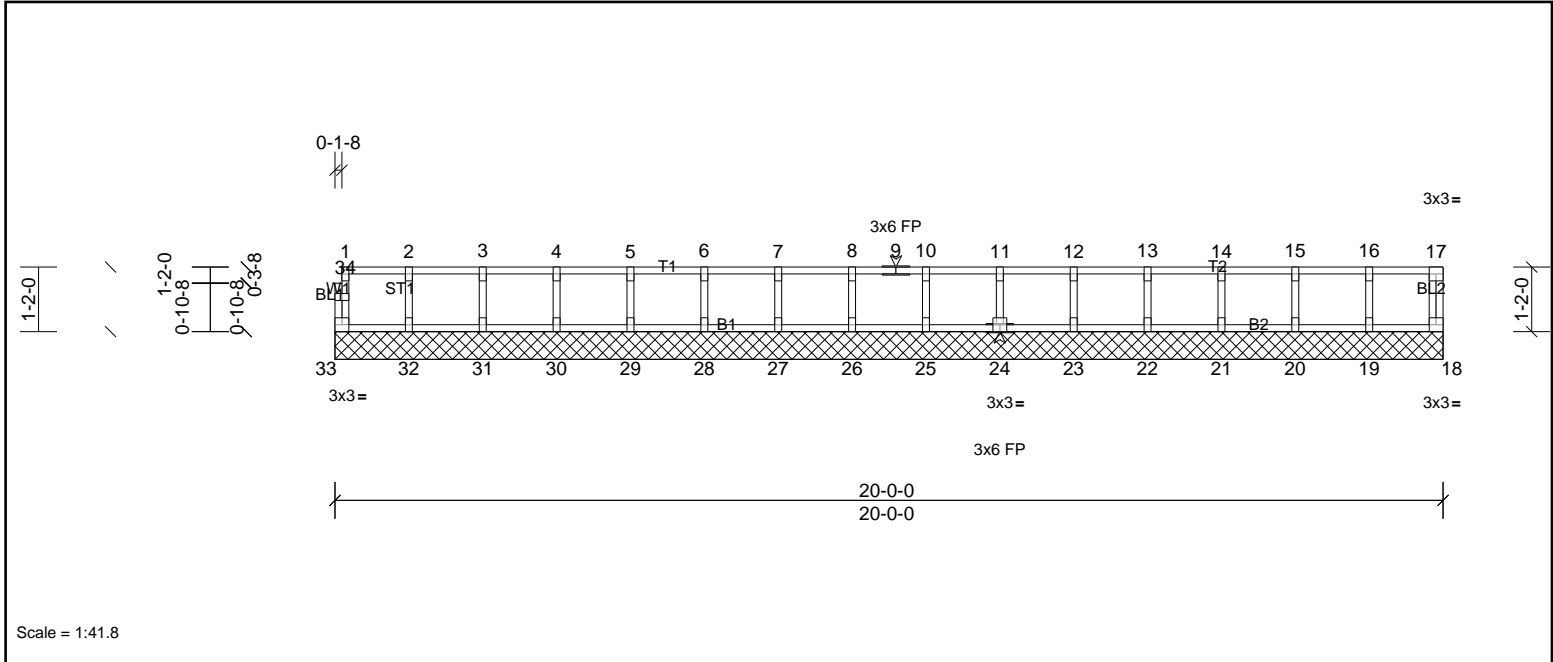
Job 72436320	Truss K200	Truss Type Truss	Qty 2	Ply 1	MUNGO HOMES - MCDOWELL B 2ND FLR Job Reference (optional)
-----------------	---------------	---------------------	----------	----------	--

UFP Mid Atlantic LLC, 5631 S. NC 62, Burlington, NC, Joy Perry

Run: 8.81 S Sep 13 2024 Print: 8.810 S Sep 13 2024 MiTek Industries, Inc. Thu Nov 21 07:55:16

Page: 1

ID:q6xmDaGgGpr4T8wcGw4bQWzKH9V-VCoLNIlpvOtttdm5AgPlpcYA?HpJsyHMbts6XyH1h9



Scale = 1:41.8

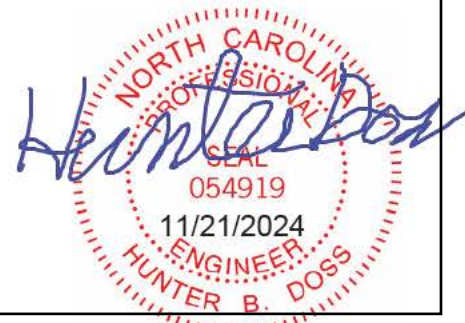
Loading	(psf)	Spacing	2-0-0	CSI	DEFL	in	(loc)	l/defl	L/d	PLATES	GRIP	
TCLL	40.0	Plate Grip DOL	1.00	TC	0.08	Vert(LL)	n/a	-	n/a	999	MT20	244/190
TCDL	10.0	Lumber DOL	1.00	BC	0.01	Vert(TL)	n/a	-	n/a	999		
BCLL	0.0	Rep Stress Incr	YES	WB	0.03	Horiz(TL)	0.00	18	n/a	n/a		
BCDL	5.0	Code	IRC2015/TPI2014	Matrix-R							Weight: 84 lb	FT = 20%F, 12%E

LUMBER		BRACING	
TOP CHORD	2x4 SP No.2(flat)	TOP CHORD	Structural wood sheathing directly applied or 6-0-0 oc purlins, except end verticals.
BOT CHORD	2x4 SP No.2(flat)	BOT CHORD	Rigid ceiling directly applied or 10-0-0 oc bracing.
WEBS	2x4 SP No.3(flat)		
OTHERS	2x4 SP No.3(flat)		

**REACTIONS** All bearings 20-0-0.  
(lb) - Max Grav All reactions 250 (lb) or less at joint(s) 18, 19, 20, 21, 22, 23, 24, 25, 26, 27, 28, 29, 30, 31, 32, 33

**FORCES** (lb) - Max. Comp./Max. Ten. - All forces 250 (lb) or less except when shown.

- NOTES**
- All plates are 1.5x3 MT20 unless otherwise indicated.
  - Gable requires continuous bottom chord bearing.
  - Truss to be fully sheathed from one face or securely braced against lateral movement (i.e. diagonal web).
  - Gable studs spaced at 1'-4-0 oc.
  - This truss is designed in accordance with the 2015 International Residential Code sections R502.11.1 and R802.10.2 and referenced standard ANSI/TPI 1.
  - Recommend 2x6 strongbacks, on edge, spaced at 10-0-0 oc and fastened to each truss with 3-10d (0.131" X 3") nails. Strongbacks to be attached to walls at their outer ends or restrained by other means.



This design is based upon parameters shown, and is for an individual building component to be installed and loaded vertically. Applicability of design parameters and proper incorporation of component is responsibility of the Building Designer. Building Designer shall verify all design information on this sheet for conformance with conditions and requirements of the specific building and governing codes and ordinances. Building Designer accepts responsibility for the correctness or accuracy of the design information as it may relate to a specific building. Certification is valid only when truss is fabricated by a UFPI plant. Bracing shown is for lateral support of truss members only and does not replace erection and permanent bracing. Refer to Building Component Safety Information (BCSI) for general guidance regarding storage, erection and bracing available from SBCA and Truss Plate Institute.



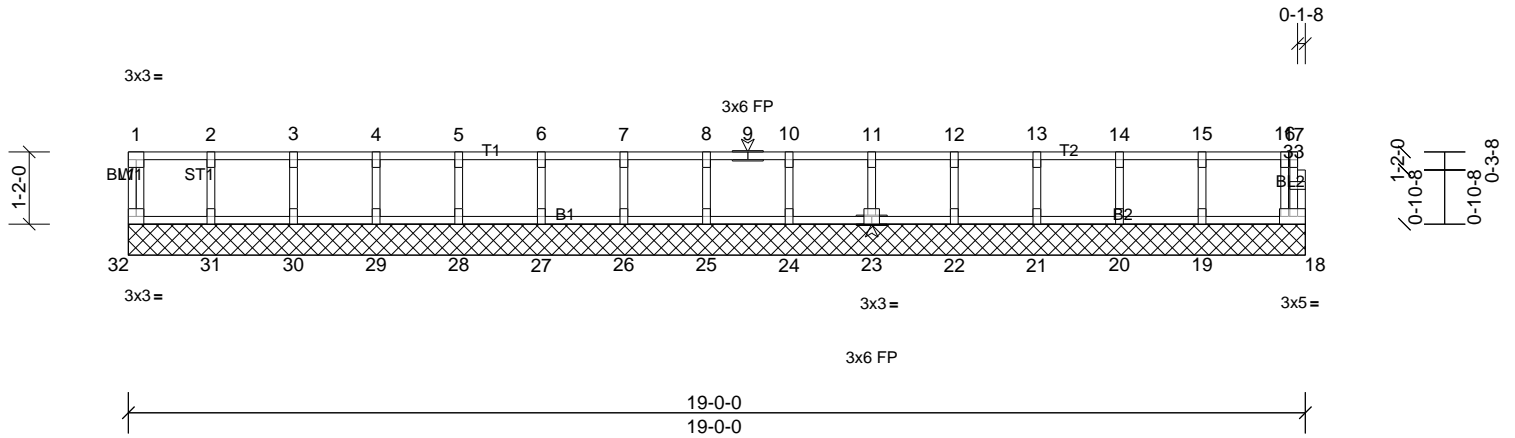
Job 72436320	Truss K201	Truss Type Truss	Qty 1	Ply 1	MUNGO HOMES - MCDOWELL B 2ND FLR Job Reference (optional)
-----------------	---------------	---------------------	----------	----------	--

UFP Mid Atlantic LLC, 5631 S. NC 62, Burlington, NC, Joy Perry

Run: 8.81 S Sep 13 2024 Print: 8.810 S Sep 13 2024 MiTek Industries, Inc. Thu Nov 21 07:55:16

Page: 1

ID:q6xmDaGgGpr4T8wcGw4bQWzKH9V-VCoLNllpvOtttdm5AgPlpcY0?HdJswHMbts6XyH1h9



Scale = 1:37.4

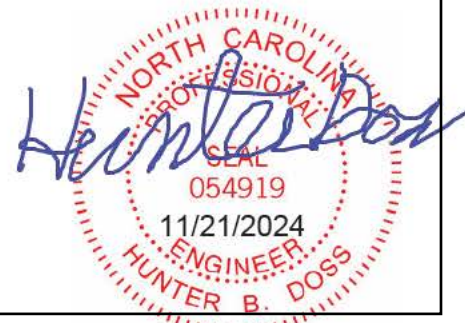
Loading	(psf)	Spacing	2-0-0	CSI	DEFL	in	(loc)	l/defl	L/d	PLATES	GRIP	
TCLL	40.0	Plate Grip DOL	1.00	TC	0.09	Vert(LL)	n/a	-	n/a	999	MT20	244/190
TCDL	10.0	Lumber DOL	1.00	BC	0.02	Vert(TL)	n/a	-	n/a	999		
BCLL	0.0	Rep Stress Incr	YES	WB	0.03	Horiz(TL)	0.00	18	n/a	n/a		
BCDL	5.0	Code	IRC2015/TPI2014	Matrix-R							Weight: 81 lb	FT = 20%F, 12%E

LUMBER		BRACING	
TOP CHORD	2x4 SP No.2(flat)	TOP CHORD	Structural wood sheathing directly applied or 6-0-0 oc purlins, except end verticals.
BOT CHORD	2x4 SP No.2(flat)	BOT CHORD	Rigid ceiling directly applied or 10-0-0 oc bracing.
WEBS	2x4 SP No.3(flat)		
OTHERS	2x4 SP No.3(flat)		

**REACTIONS** All bearings 19-0-0.  
(lb) - Max Grav All reactions 250 (lb) or less at joint(s) 18, 19, 20, 21, 22, 23, 24, 25, 26, 27, 28, 29, 30, 31, 32

**FORCES** (lb) - Max. Comp./Max. Ten. - All forces 250 (lb) or less except when shown.

- NOTES**
- 1) All plates are 1.5x3 MT20 unless otherwise indicated.
  - 2) Gable requires continuous bottom chord bearing.
  - 3) Truss to be fully sheathed from one face or securely braced against lateral movement (i.e. diagonal web).
  - 4) Gable studs spaced at 1-4-0 oc.
  - 5) This truss is designed in accordance with the 2015 International Residential Code sections R502.11.1 and R802.10.2 and referenced standard ANSI/TPI 1.
  - 6) Recommend 2x6 strongbacks, on edge, spaced at 10-00-00 oc and fastened to each truss with 3-10d (0.131" X 3") nails. Strongbacks to be attached to walls at their outer ends or restrained by other means.



This design is based upon parameters shown, and is for an individual building component to be installed and loaded vertically. Applicability of design parameters and proper incorporation of component is responsibility of the Building Designer. Building Designer shall verify all design information on this sheet for conformance with conditions and requirements of the specific building and governing codes and ordinances. Building Designer accepts responsibility for the correctness or accuracy of the design information as it may relate to a specific building. Certification is valid only when truss is fabricated by a UFPI plant. Bracing shown is for lateral support of truss members only and does not replace erection and permanent bracing. Refer to Building Component Safety Information (BCSI) for general guidance regarding storage, erection and bracing available from SBCA and Truss Plate Institute.



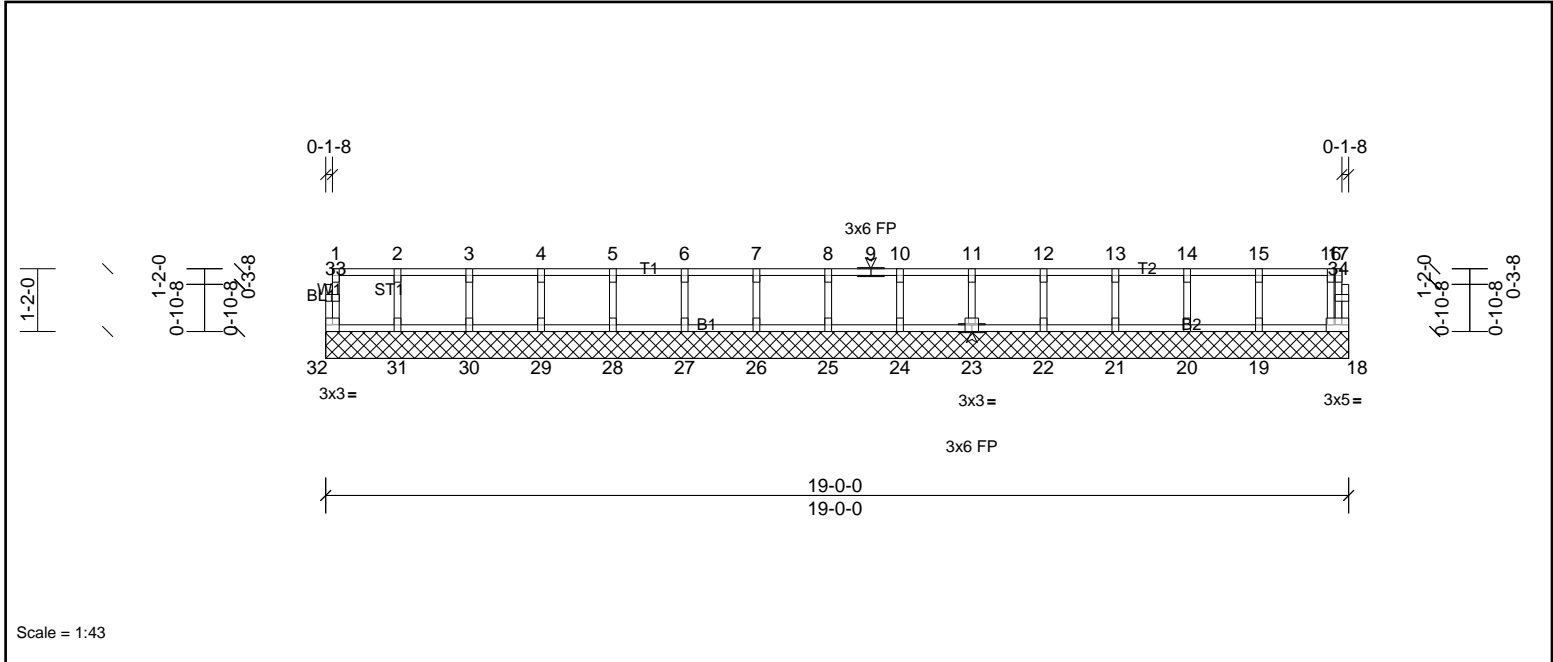
Job 72436320	Truss K202	Truss Type Truss	Qty 1	Ply 1	MUNGO HOMES - MCDOWELL B 2ND FLR Job Reference (optional)
-----------------	---------------	---------------------	----------	----------	--

UFP Mid Atlantic LLC, 5631 S. NC 62, Burlington, NC, Joy Perry

Run: 8.81 S Sep 13 2024 Print: 8.810 S Sep 13 2024 MiTek Industries, Inc. Thu Nov 21 07:55:16

Page: 1

ID:q6xmDaGgGpr4T8wcGw4bQWzKH9V-VCoLNllpvOttpdm5AgPlpcY0?HdJswHMbts6XyH1h9



Scale = 1:43

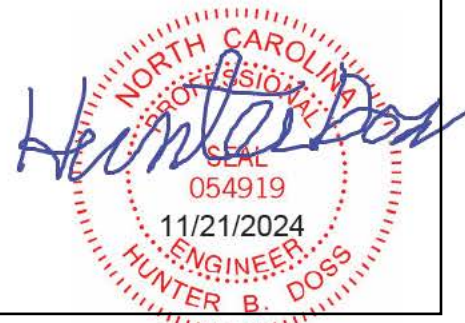
Loading	(psf)	Spacing	2-0-0	CSI	DEFL	in	(loc)	l/defl	L/d	PLATES	GRIP	
TCLL	40.0	Plate Grip DOL	1.00	TC	0.09	Vert(LL)	n/a	-	n/a	999	MT20	244/190
TCDL	10.0	Lumber DOL	1.00	BC	0.02	Vert(TL)	n/a	-	n/a	999		
BCLL	0.0	Rep Stress Incr	YES	WB	0.03	Horiz(TL)	0.00	18	n/a	n/a		
BCDL	5.0	Code	IRC2015/TPI2014	Matrix-R							Weight: 80 lb	FT = 20%F, 12%E

LUMBER		BRACING	
TOP CHORD	2x4 SP No.2(flat)	TOP CHORD	Structural wood sheathing directly applied or 6-0-0 oc purlins, except end verticals.
BOT CHORD	2x4 SP No.2(flat)	BOT CHORD	Rigid ceiling directly applied or 10-0-0 oc bracing.
WEBS	2x4 SP No.3(flat)		
OTHERS	2x4 SP No.3(flat)		

**REACTIONS** All bearings 19-0-0.  
(lb) - Max Grav All reactions 250 (lb) or less at joint(s) 18, 19, 20, 21, 22, 23, 24, 25, 26, 27, 28, 29, 30, 31, 32

**FORCES** (lb) - Max. Comp./Max. Ten. - All forces 250 (lb) or less except when shown.

- NOTES**
- All plates are 1.5x3 MT20 unless otherwise indicated.
  - Gable requires continuous bottom chord bearing.
  - Truss to be fully sheathed from one face or securely braced against lateral movement (i.e. diagonal web).
  - Gable studs spaced at 1-4-0 oc.
  - This truss is designed in accordance with the 2015 International Residential Code sections R502.11.1 and R802.10.2 and referenced standard ANSI/TPI 1.
  - Recommend 2x6 strongbacks, on edge, spaced at 10-00-00 oc and fastened to each truss with 3-10d (0.131" X 3") nails. Strongbacks to be attached to walls at their outer ends or restrained by other means.



This design is based upon parameters shown, and is for an individual building component to be installed and loaded vertically. Applicability of design parameters and proper incorporation of component is responsibility of the Building Designer. Building Designer shall verify all design information on this sheet for conformance with conditions and requirements of the specific building and governing codes and ordinances. Building Designer accepts responsibility for the correctness or accuracy of the design information as it may relate to a specific building. Certification is valid only when truss is fabricated by a UFPI plant. Bracing shown is for lateral support of truss members only and does not replace erection and permanent bracing. Refer to Building Component Safety Information (BCSI) for general guidance regarding storage, erection and bracing available from SBCA and Truss Plate Institute.

