

THIS PLAN IS DESIGNED TO MEET THE REQUIREMENTS OF THE NORTH CAROLINA RESIDENTIAL CODE 2018 EDITION

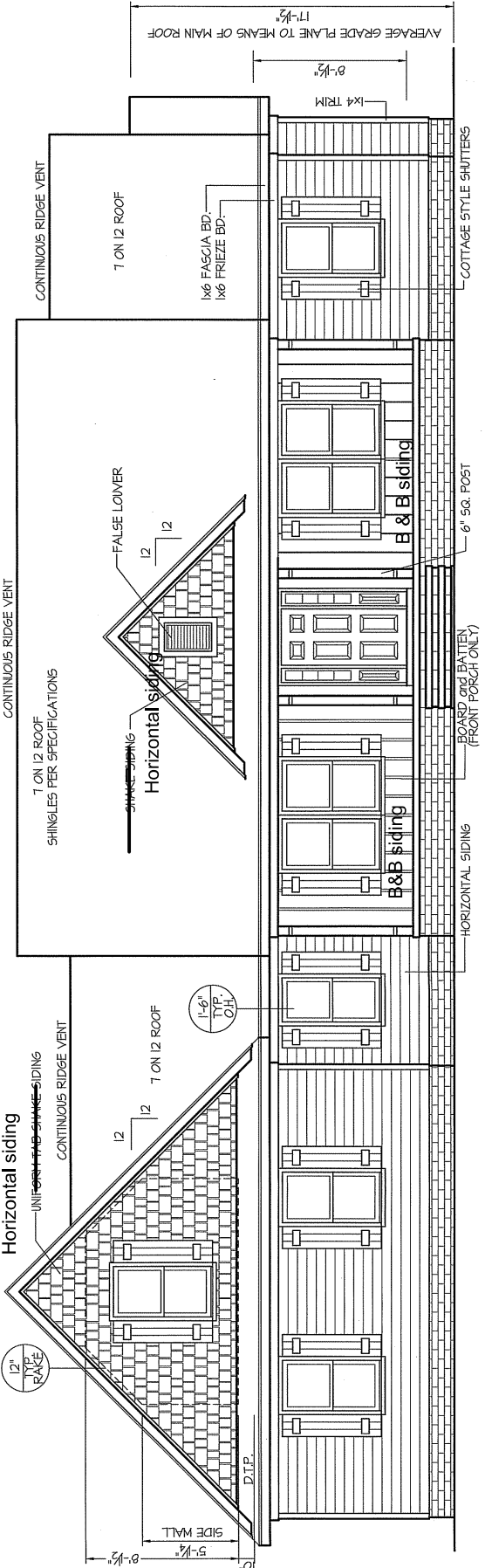
DATE:
February 4, 2025

FREEDOM FAMILY HOMES
P.O. BOX 608
DUNN, N.C. - 28335
(910) 892-1231 FAX: (910) 892-5680
© 2025, FREEDOM FAMILY HOMES



EXCLUSIVE PLAN FOR
FREEDOM FAMILY HOMES
Campbell-III~Caleb Jackson

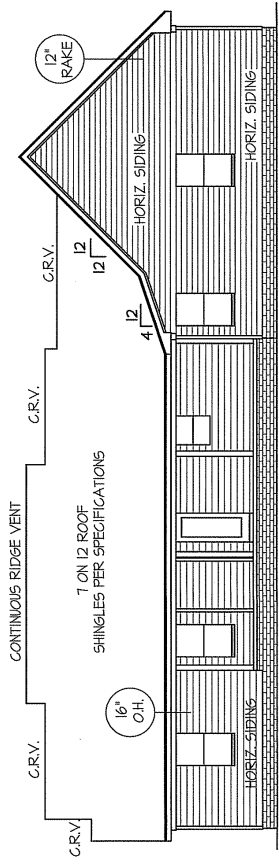
SHEET NO.
1



FRONT ELEVATION
SCALE: 1/4" = 1'-0"

INSULATION and FENESTRATION REQUIREMENTS			
CLIMATE ZONE	ZONE-3	ZONE-4	
FENESTRATION U-FACTOR	0.35	0.35	
GLAZED FENESTRATION SHGC	0.30	0.30	
MINIMUM CEILING R-VALUE	R-30	R-30	
MINIMUM FLOOR R-VALUE	R-15, B-2.5	R-15, B-2.5	
MINIMUM WALL R-VALUE	R-14	R-14	
MIN. CRAWL SPACE WALL R-VALUE	5/8	0	
MIN. SLAB R-VALUE	5/8	R-10	
GRADE MAY VARY - BUILDER TO VERIFY			

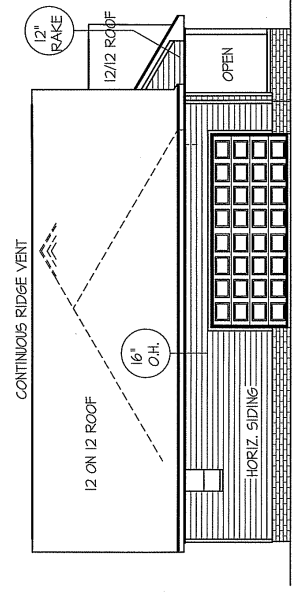
ROOF VENTILATION REQ'D'S:
2240 ATTIC SQ. FT. / 300 = 7.47
PROVIDED ON PLAN
108 L.F. RIDGE VENT = 20.43
144 L.F. SYPHT VENT = 9.0
TOTAL = 29.43 S.F. FREE NET AREA



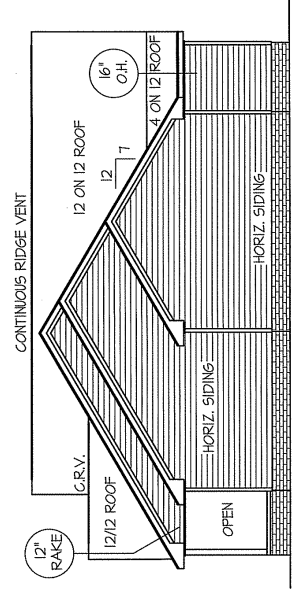
REAR ELEVATION
SCALE: 1/8" = 1'-0"

WIND ZONES (PER TABLE R301.2(4))	
COUNTY	MPH
HARNETT	120
JOHNSTON	120
SAMPSON	130
WAKE	115

ALL EXTERIOR WALLS TO BE
SHEATHED WITH CS-HFT (1/8" OSB)
IN ACCORDANCE WITH SECTION
R602.10.3 UNLESS OTHERWISE NOTED.



LEFT ELEVATION
SCALE: 1/8" = 1'-0"



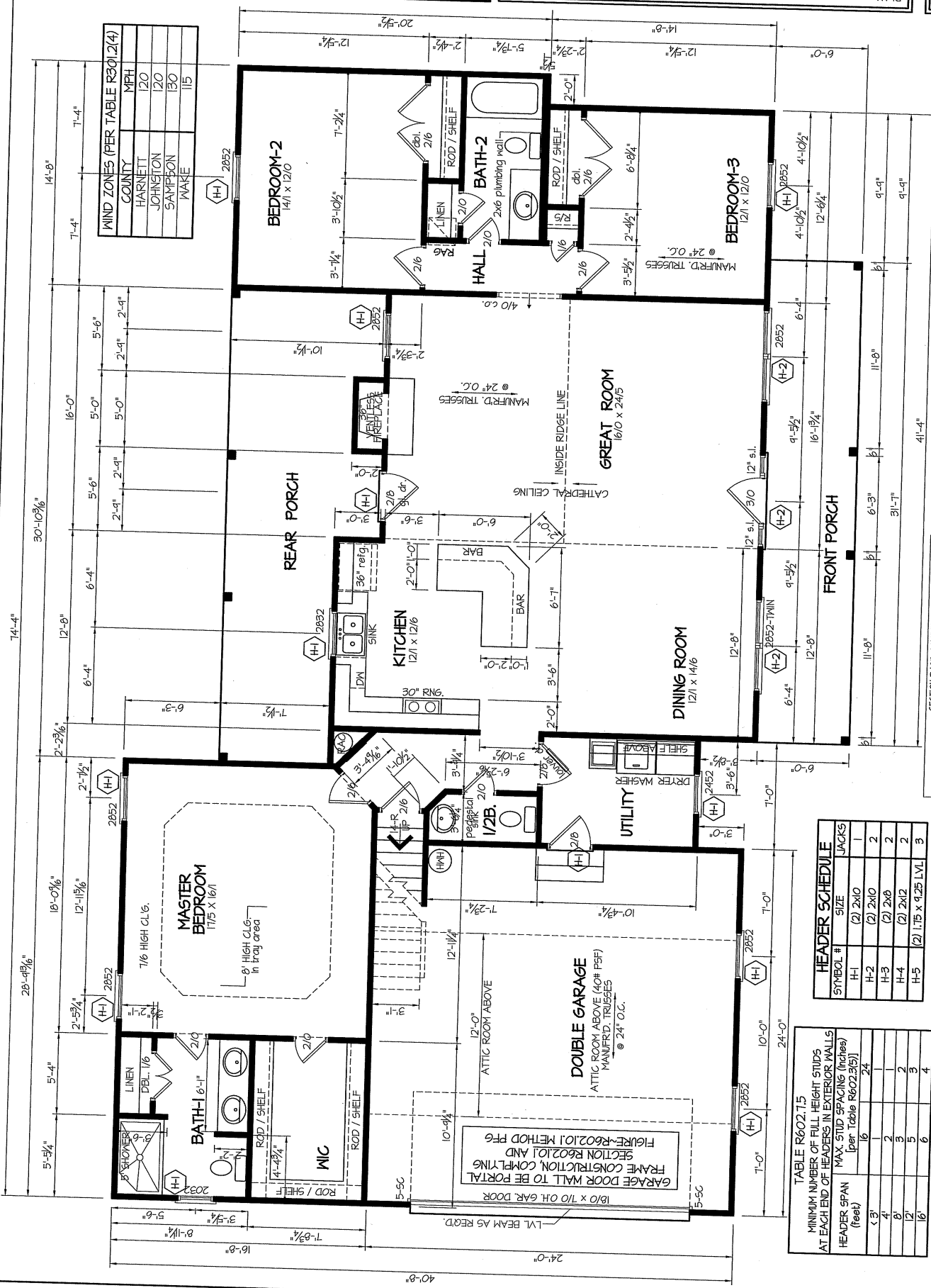
RIGHT ELEVATION
SCALE: 1/8" = 1'-0"



EXCLUSIVE PLAN FOR
FREEDOM FAMILY HOMES
Campbell-III ~ Caleb Jackson

FREEDOM FAMILY HOMES
P.O. BOX 608
DUNN, N.C. - 28335
(910) 892-1231 FAX: (910) 892-5680
© 2025, FREEDOM FAMILY HOMES

DATE:
February 4, 2025



MINI ZONES (PER TABLE R301.2(4))

COUNTY	MPH
HARNETT	120
JOHNSON	120
SAMPSON	130
WAKE	115

HEADER SCHEDULE

SYMBOL #	SIZE	JACKS
H-1	(2) 2X10	1
H-2	(2) 2X10	2
H-3	(2) 2X8	2
H-4	(2) 2X12	2
H-5	(2) 1'75 x 9'25 LVL	3

TABLE R602.7.5
MINIMUM NUMBER OF FILL HEIGHT STUDS
AT EACH END OF HEADERS IN EXTERIOR WALLS
MAX. STUD SPACING (inches)
(per Table R602.3(5))

HEADER SPAN (feet)	16	24	32	40	48	56	64
1'3"	1	1	1	1	1	1	1
4'	2	2	2	2	2	2	2
8'	3	3	3	3	3	3	3
12'	5	5	5	5	5	5	5
16'	6	6	6	6	6	6	6

ALL EXTERIOR WALLS TO BE SHEATHED WITH CS-MEP (1/16" OSB) IN ACCORDANCE WITH SECTION R602.10.3 UNLESS OTHERWISE NOTED.

GIRDER AND HEADER SIZES AND JACK STUD REQUIREMENTS ON EXTERIOR AND INTERIOR LOAD BEARING WALLS ARE TO COINCIDE WITH TABLE EXT.-R602.7 (1) AND INT.-R602.7 (2).

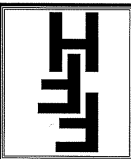
SECTION R407.3 STRUCTURAL REQUIREMENTS:
THE COLUMNS SHALL BE RESTRAINED TO PREVENT LATERAL DISPLACEMENT AT THE JOINTS. ALL WOOD COLUMNS SHALL BE NOT LESS IN NOMINAL SIZE THAN 4 INCHES (102 mm BY 102 mm). STEEL COLUMNS SHALL BE NOT LESS THAN 3-INCH-DIAMETER (76 mm) SCHEDULE 40 PIPE MANUFACTURED IN ACCORDANCE WITH ASTM A53 GRADE B OR APPROVED EQUIVALENT.

ALL INTERIOR AND EXTERIOR LOAD BEARING HEADERS WILL BE 2X10 #2 SPT UNLESS OTHERWISE NOTED.

1842 5/8" (61 FL. HEATED-FRAME)
326 5/8" (UNEATED-5/8" RM)
120 5/8" (FRONT PORCH)
256 5/8" (REAR PORCH)

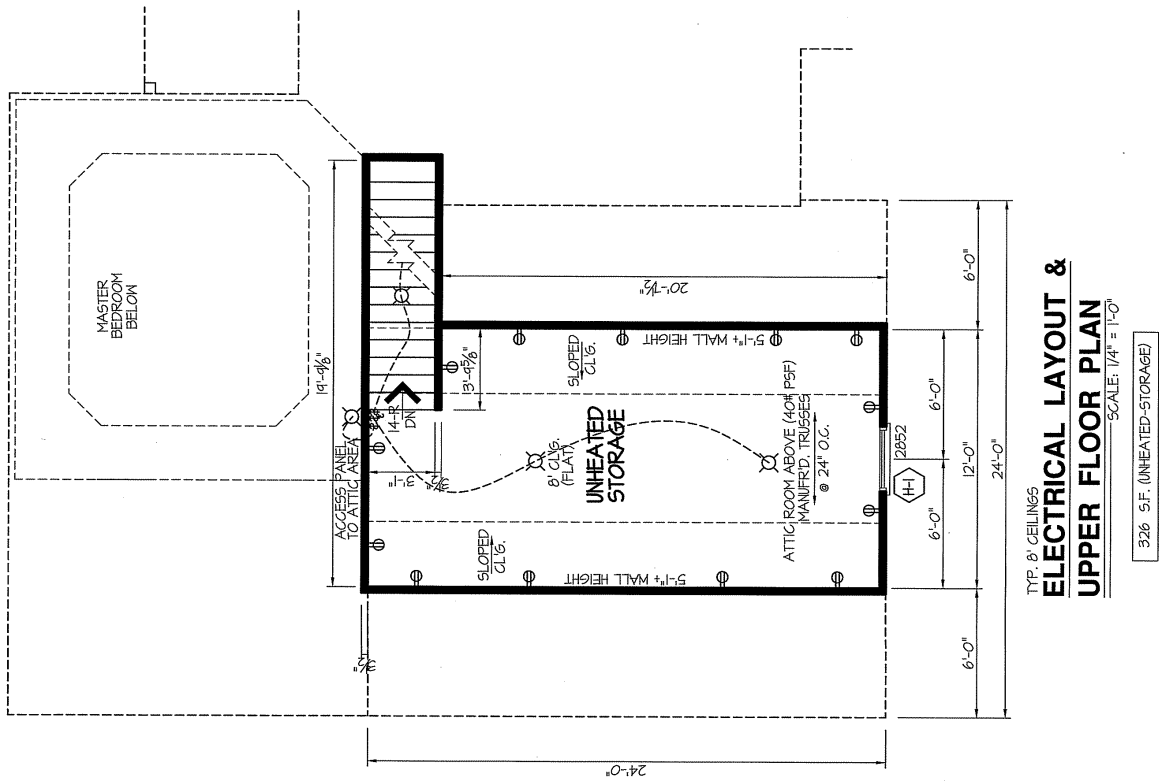
SHEET NO.
3

PLAN:
**EXCLUSIVE PLAN FOR
FREEDOM FAMILY HOMES
Campbell-III~Caleb Jackson**



FREEDOM FAMILY HOMES
P.O. BOX 608
DUNN, N.C. - 28335
O: (910) 892-1231 FAX: (910) 892-5680
© 2025, FREEDOM FAMILY HOMES

DATE:
February 4, 2025



TYP. 8' CEILINGS
**ELECTRICAL LAYOUT &
UPPER FLOOR PLAN**
SCALE: 1/4" = 1'-0"
326 S.F. (UNHEATED-STORAGE)

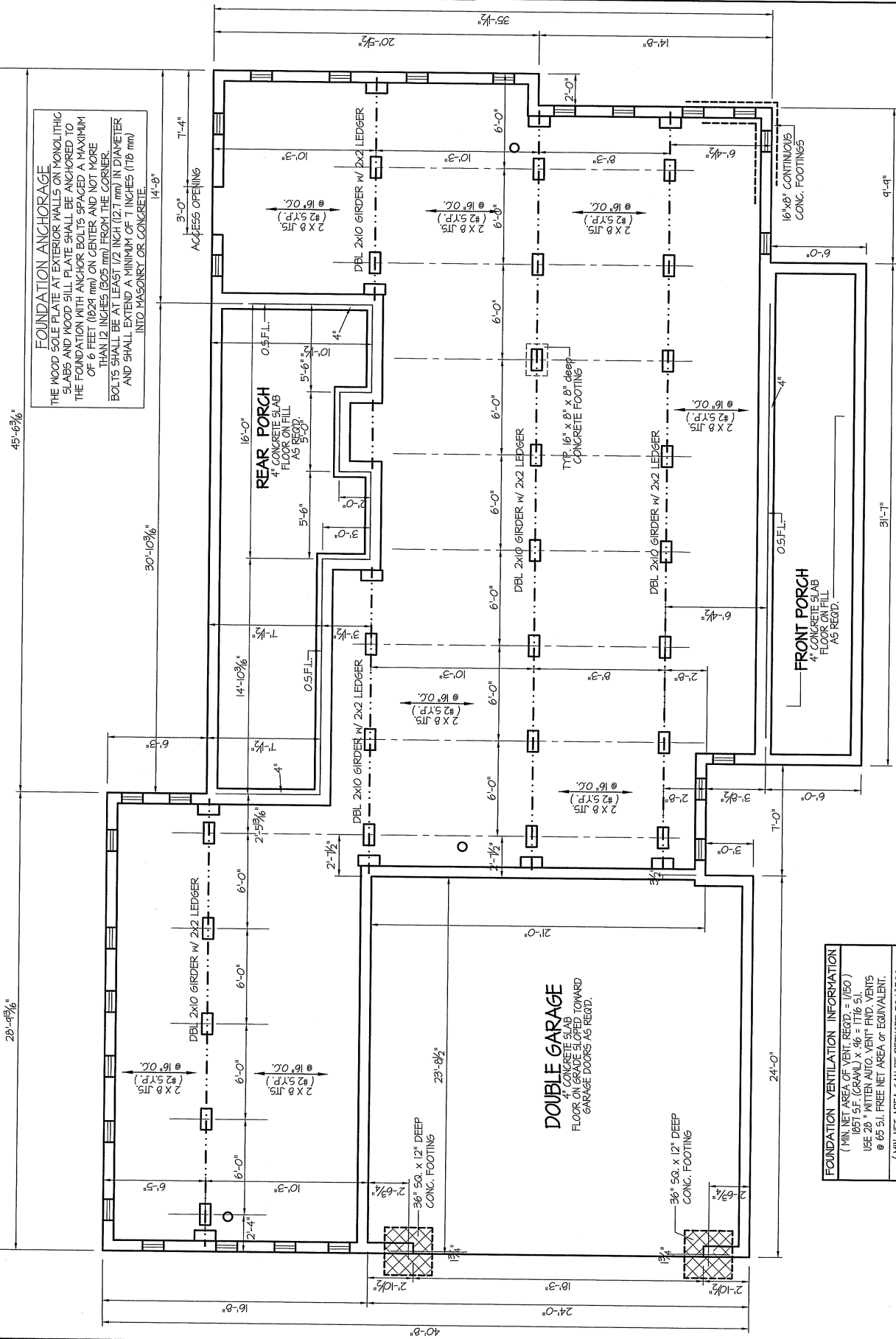
DATE:
February 4, 2025

FREEDOM FAMILY HOMES
P.O. BOX 608
DUNN, N.C. - 28335
© 2025, FREEDOM FAMILY HOMES
O: (910) 892-1231 FAX: (910) 892-5680



EXCLUSIVE PLAN FOR
FREEDOM FAMILY HOMES
Campbell-III~Caleb Jackson

SHEET NO.
4



BOX SILL
FOUNDATION PLAN
SCALE: 1/4" = 1'-0"

ALL JOISTS AND GIRDERS WILL BE #2 SYP.
JOIST SPANS TO CONCLUDE WITH REVISED TABLES
R502.3(1) AND R502.3(2) FROM 2018 NRC CODES
GIRDER SPANS AND HEADER SPANS TO CONCLUDE
WITH TABLE R602.1(1), R602.1(2) AND R602.1(3).

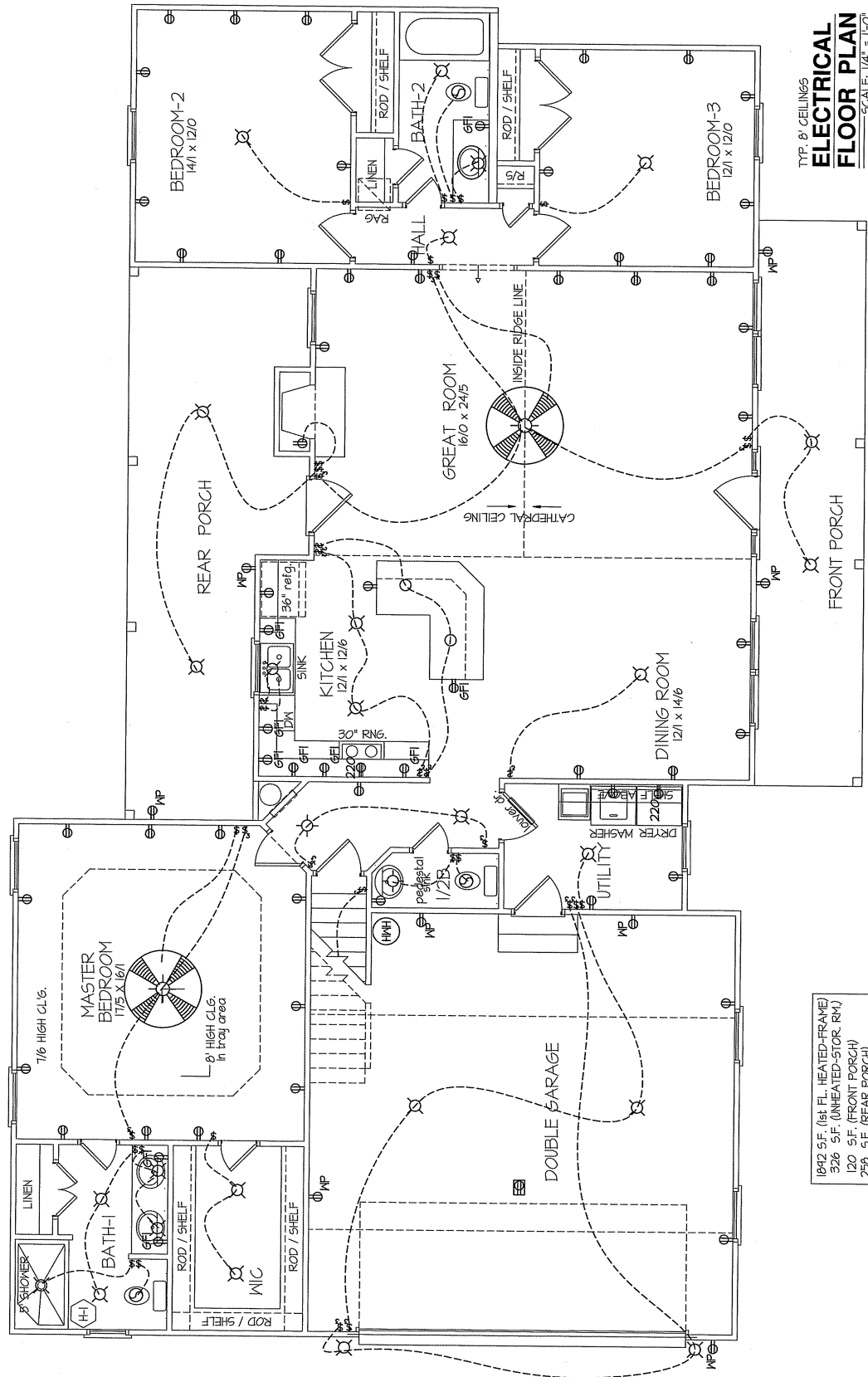
DATE: February 4, 2025

FREEDOM FAMILY HOMES
P.O. BOX 608
DUNN, N.C. - 28335
© 2025, FREEDOM FAMILY HOMES
O: (910) 892-1231 FAX: (910) 892-5680



EXCLUSIVE PLAN FOR
FREEDOM FAMILY HOMES
Campbell-III ~ Caleb Jackson

SHEET NO.
5



TYP. ♂ CEILINGS
**ELECTRICAL
FLOOR PLAN**
SCALE: 1/4" = 1'-0"

ELECTRICAL LEGEND	
PROVIDE ALL ELECTRICAL AND MECHANICAL DEVICES AS SHOWN. PROVIDE ALL ELECTRICAL AND MECHANICAL DEVICES AS PER MANUFACTURER'S SPECIFICATIONS. PROVIDE ALL ELECTRICAL AND MECHANICAL DEVICES AS PER MANUFACTURER'S SPECIFICATIONS.	
⊕ SURF. MOUNTED LIGHT	⊕ TYPICAL WALL RECP.
⊕ RECESSED LIGHT	⊕ TOP 1/2 HOT W/SWITCH
⊕ EYEBALL LIGHT	⊕ CEILING RECEPTACLE
⊕ FAN/LIGHT COMB.	⊕ FLOOR RECEPTACLE
⊕ FLUORESCENT TUBE	⊕ WATERPROOF RECP.
⊕ FLUOR. LIGHT FIXTURE	⊕ GROUND FAULT
⊕ EXHAUST FAN	⊕ DISPOSAL UNIT
⊕ CLG. FAN	⊕ 220 VOLT RECEPTACLE
⊕ FLOOD LIGHT	⊕ COMPUTER JACK
⊕ TYPICAL SWITCH	⊕ 3-WAY SWITCH
⊕ 4-WAY SWITCH	⊕ DIMMER SWITCH
⊕ 5" ELEC. PANEL BOX	⊕ T.V. CABLE RECP.
⊕ TELEPHONE JACK	

1942 S.F. (1st FL. HEATED-FRAME)
326 S.F. (UNHEATED-STOR. RM.)
120 S.F. (FRONT PORCH)
258 S.F. (REAR PORCH)

TOTAL HEAT GAIN = 30,461 B.T.U.H.
TOTAL HEAT LOSS = 48,152 B.T.U.H.

NOTE:
HVAC CONTRACTOR TO PROVIDE OWNERS AND BUILDERS
UNIT INFORMATION, BTUH REQUIREMENTS, AND
DUCT LAYOUTS BEFORE CONSTRUCTION BEGINS.

DATE:
February 4, 2025

FREEDOM FAMILY HOMES
P.O. BOX 608
DUNN, N.C. - 28335
C: (910) 892-1231 FAX: (910) 892-5680
© 2025, FREEDOM FAMILY HOMES

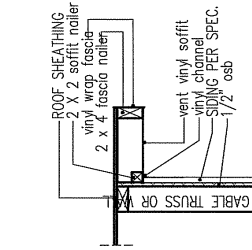


**EXCLUSIVE PLAN FOR
FREEDOM FAMILY HOMES**
Campbell-III~Caleb Jackson

PLAN:

SHEET NO.

6

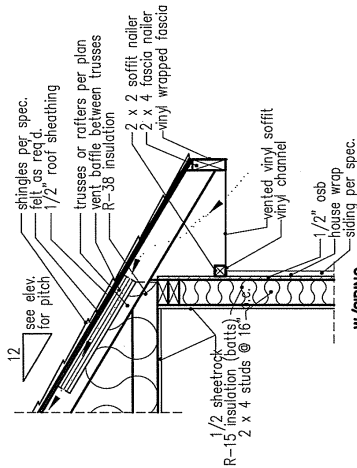


RAKE W/SIDING

NOTE: OVERHANG DISTANCE NOTED ON ELEVATION SHEET IS ALWAYS MEASURED FROM FRAME LINE

TABLE R602.15		
MINIMUM NUMBER OF FULL HEIGHT STUDS AT EACH END OF HEADERS IN EXTERIOR WALLS		
MAX. STUD SPACING (inches)	[per Table R602.15(1)]	
HEADER SPAN (feet)	16	24
≤ 3'	1	1
4'	2	1
8'	3	2
12'	5	3
16'	6	4

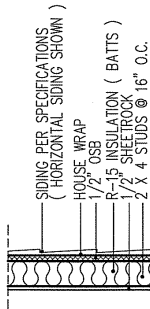
GIRDER AND HEADER SIZES AND JACK STUD REQUIREMENTS ON EXTERIOR AND INTERIOR LOAD BEARING WALLS ARE TO COINCIDE WITH TABLE EXT-R602.1 (1) AND INT-R602.1 (2).



eave W/SIDING

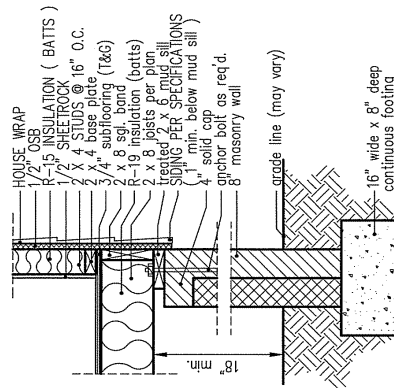
NOTE: OVERHANG DISTANCE NOTED ON ELEVATION SHEET IS ALWAYS MEASURED FROM FRAME LINE

standard eave details

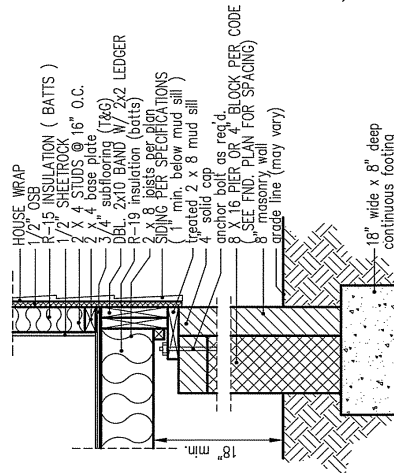


WALL W/SIDING

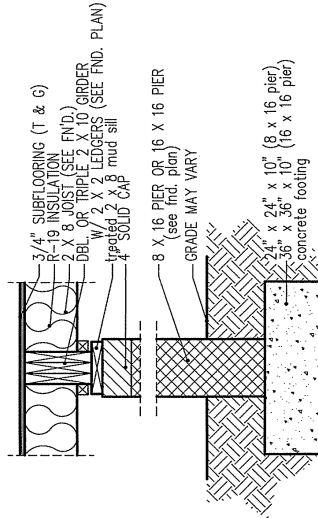
intermediate wall details



8' BOX SILL FOUNDATION WALL



PIER and CURTAIN FOUNDATION WALL



PIER and GIRDER DETAIL

DIMENSIONS IN () ARE MM

SPECIFICATIONS										
Model 6000-TR	Height		Front Width		Back Width		Depth		Glass Size	IGU Input
	Actual	Framing	Actual	Framing	Actual	Framing	Actual	Framing		
Inches	38	38-1/2	41	42	28-1/2	42	21-1/2	22		

Reference dimensions only. We recommend measuring individual units at installation.

This architectural floor plan illustrates a building layout with various rooms, corridors, and structural elements. The plan is oriented with North at the top.

Rooms and Areas:

- 12' Room:** A rectangular room located in the upper left quadrant, highlighted in light blue.
- Stairs:** Located in the upper right quadrant, indicated by a yellow rectangular area.
- Triangle Structure:** A large triangular structure, possibly a vaulted ceiling or a specific room feature, located in the lower right quadrant, highlighted in light blue.

Structural Elements and Dimensions:

- Columns:** Labeled with 'C' followed by a number (e.g., C1, C2, C3, C4, C5, C6, C7, C8, C9, C10, C11, C12, C13, C14, C15, C16, C17, C18, C19, C20, C21, C22, C23, C24, C25, C26, C27, C28, C29, C30, C31, C32, C33, C34, C35, C36, C37, C38, C39, C40, C41, C42, C43, C44, C45, C46, C47, C48, C49, C50, C51, C52, C53, C54, C55, C56, C57, C58, C59, C60, C61, C62, C63, C64, C65, C66, C67, C68, C69, C70, C71, C72, C73, C74, C75, C76, C77, C78, C79, C80, C81, C82, C83, C84, C85, C86, C87, C88, C89, C90, C91, C92, C93, C94, C95, C96, C97, C98, C99, C100).
- Beams:** Labeled with 'B' followed by a number (e.g., B1, B2, B3, B4, B5, B6, B7, B8, B9, B10, B11, B12, B13, B14, B15, B16, B17, B18, B19, B20, B21, B22, B23, B24, B25, B26, B27, B28, B29, B30, B31, B32, B33, B34, B35, B36, B37, B38, B39, B40, B41, B42, B43, B44, B45, B46, B47, B48, B49, B50, B51, B52, B53, B54, B55, B56, B57, B58, B59, B60, B61, B62, B63, B64, B65, B66, B67, B68, B69, B70, B71, B72, B73, B74, B75, B76, B77, B78, B79, B80, B81, B82, B83, B84, B85, B86, B87, B88, B89, B90, B91, B92, B93, B94, B95, B96, B97, B98, B99, B100).
- Dimensions:** Various dimensions are provided for rooms, corridors, and structural elements, including room sizes (e.g., 12' x 12', 12' x 14', 12' x 16', 12' x 18', 12' x 20', 12' x 22', 12' x 24', 12' x 26', 12' x 28', 12' x 30', 12' x 32', 12' x 34', 12' x 36', 12' x 38', 12' x 40', 12' x 42', 12' x 44', 12' x 46', 12' x 48', 12' x 50', 12' x 52', 12' x 54', 12' x 56', 12' x 58', 12' x 60', 12' x 62', 12' x 64', 12' x 66', 12' x 68', 12' x 70', 12' x 72', 12' x 74', 12' x 76', 12' x 78', 12' x 80', 12' x 82', 12' x 84', 12' x 86', 12' x 88', 12' x 90', 12' x 92', 12' x 94', 12' x 96', 12' x 98', 12' x 100').

Other Features:

- Corridors:** Labeled with 'C' followed by a number (e.g., C1, C2, C3, C4, C5, C6, C7, C8, C9, C10, C11, C12, C13, C14, C15, C16, C17, C18, C19, C20, C21, C22, C23, C24, C25, C26, C27, C28, C29, C30, C31, C32, C33, C34, C35, C36, C37, C38, C39, C40, C41, C42, C43, C44, C45, C46, C47, C48, C49, C50, C51, C52, C53, C54, C55, C56, C57, C58, C59, C60, C61, C62, C63, C64, C65, C66, C67, C68, C69, C70, C71, C72, C73, C74, C75, C76, C77, C78, C79, C80, C81, C82, C83, C84, C85, C86, C87, C88, C89, C90, C91, C92, C93, C94, C95, C96, C97, C98, C99, C100).
- Doors:** Indicated by yellow lines with arrows showing the direction of opening.
- Windows:** Indicated by yellow lines with arrows showing the direction of opening.
- Notes:** Several notes are present, including 'Comment 1', 'Comment 2', and 'Comment 3', providing additional information about the plan.

Freedom Constructors
Job #28547
Caleb Jackson