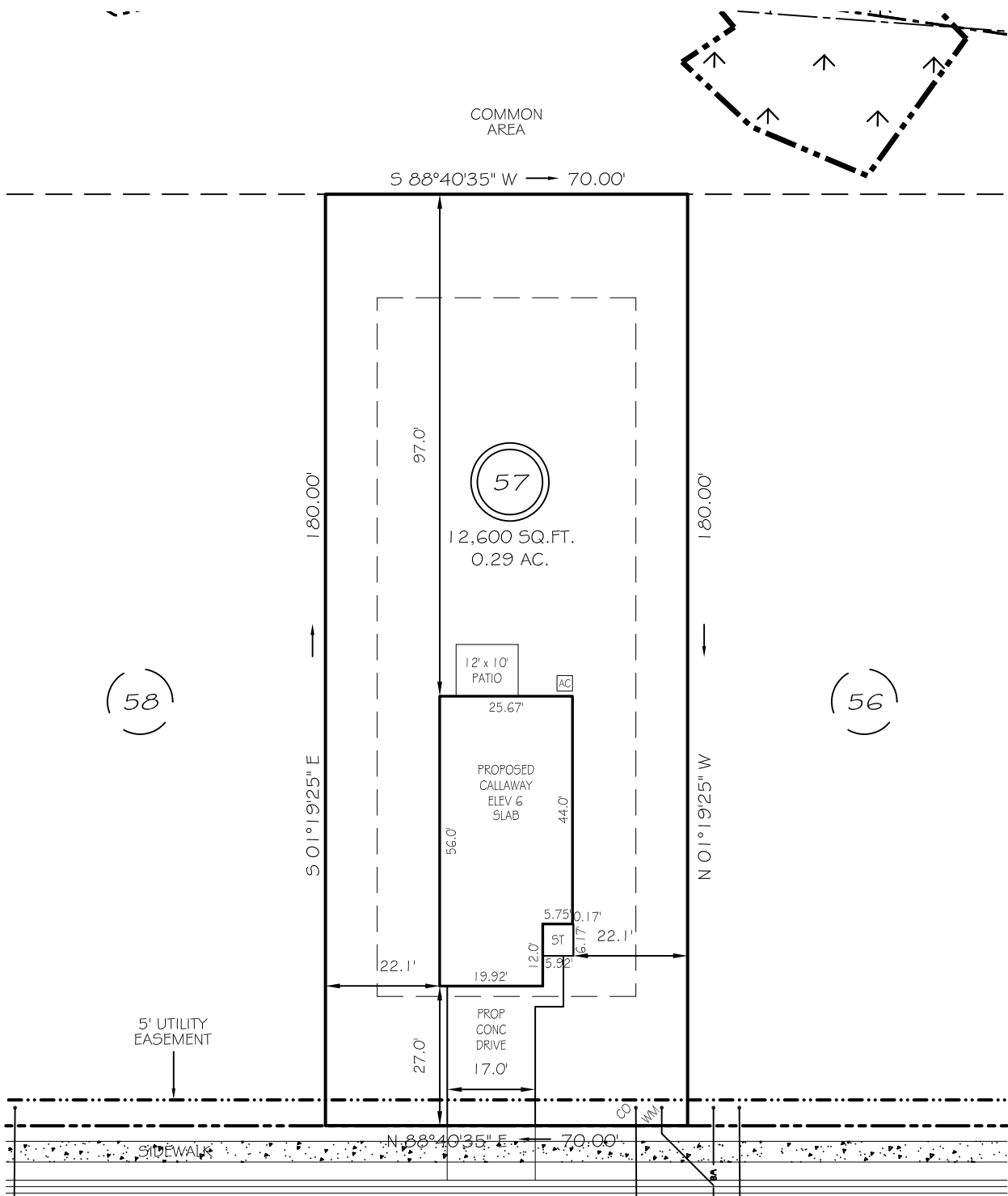


I, MICHAEL P. GRIFFIN, certify that under my direction and supervision this map was drawn from an actual field survey; that the error of closure of the survey as calculated by coordinates is 1: 10,000+; that the area shown hereon was calculated by coordinates. Dashed lines shown hereon were not surveyed.

Witness my hand and seal this day of MONTH 2025.



BK 2023 PG5 658-660
HARNETT CO. REGISTRY



WINDING CREEK DRIVE

IMPERVIOUS AREAS

50' PUBLIC RW & UTILITY ACCESS

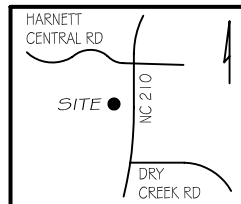
SETBACKS

HOUSE	1405 SQ. FT.
DRIVE & WALKS	504 SQ. FT.
PATIO	120 SQ. FT.
AVC PAD	9 SQ. FT.
TOTAL	2038 SQ. FT.
ALLOWED	3800 SQ. FT.

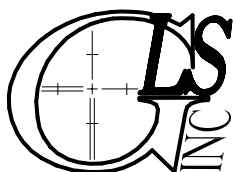
FRONT	25'
REAR	20'
SIDE	10'
CORNER SIDE	20'

LEGEND

EIP	EXISTING IRON PIPE	FE5	FLARED END SECTION
IPS	IRON PIPE SET	WM	WATER METER
R/W	RIGHT OF WAY	CO	CLEAN OUT
N/F	NOW OR FORMERLY	FH	FIRE HYDRANT
EIS	EXISTING IRON STAKE	CB	CATCH BASIN



P R E L I M I N A R Y
NOT FOR RECORDATION,
SALES OR CONVEYANCE



GRIFFIN LAND SURVEYING, INC.

P. O. BOX 148
FUQUAY-VARINA, NC 27526
(919) - 567 - 1963

FIRM LIC.# C-1345

PLOT PLAN
FOR
DRB HOMES
THE FARM AT
NEILLS CREEK
LOT 57

553 WINDING CREEK DRIVE
NORTH CAROLINA

HARNETT COUNTY NEILL'S CREEK TWSHP

DRAWN BY KDF

DATE 1/16/25

CHECKED BY MPG

SCALE 1" = 30'