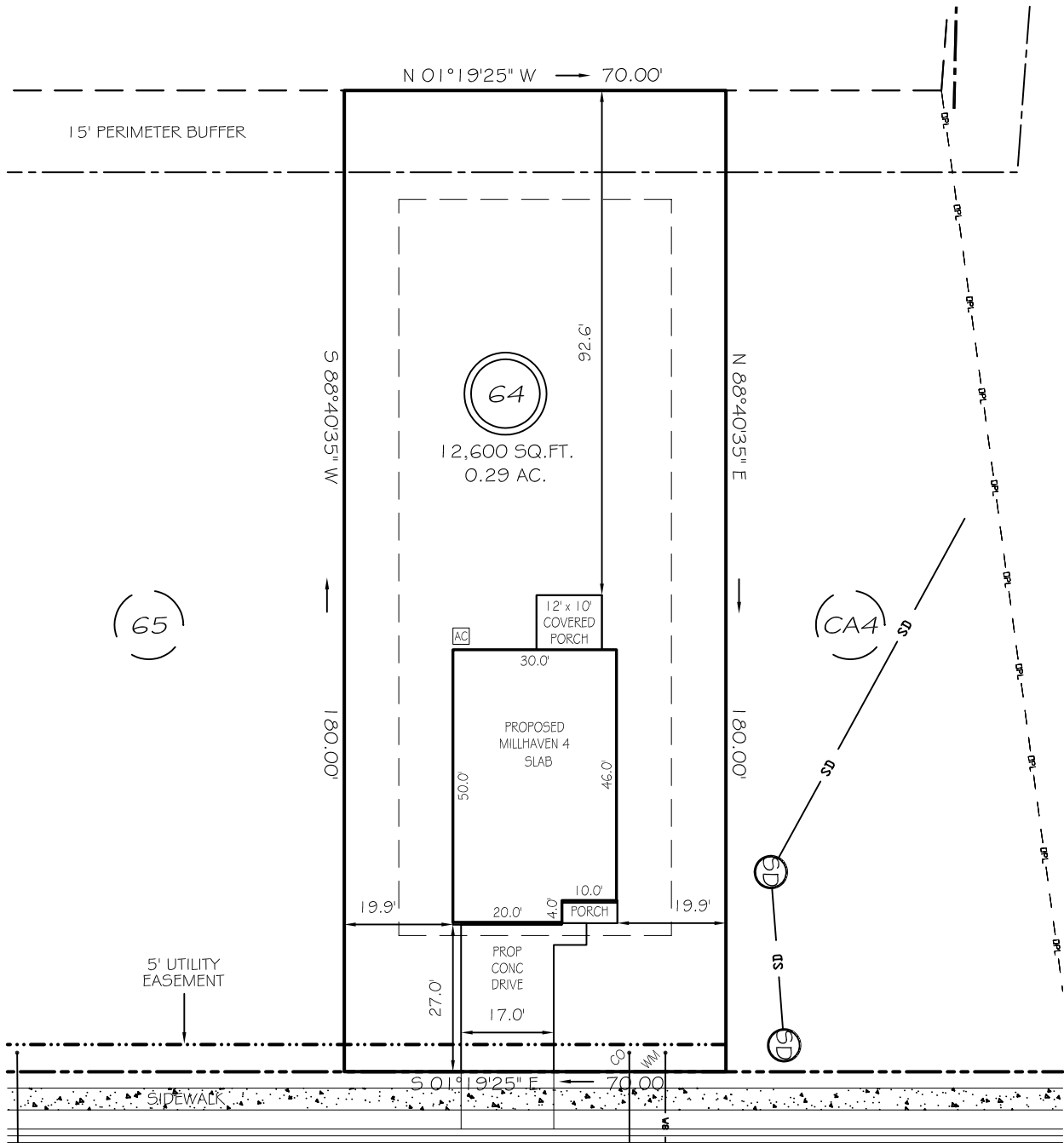


I, MICHAEL P. GRIFFIN, certify that under my direction and supervision this map was drawn from an actual field survey; that the error of closure of the survey as calculated by coordinates is 1: 10,000+; that the area shown hereon was calculated by coordinates. Dashed lines shown hereon were not surveyed.

Witness my hand and seal this day of MONTH 2025.

BK 2023 PGS 658-660
HARNETT CO. REGISTRY

N / F
TRAVIS WESTER
ESTATE 92E, PG 105
DB 304, PG 30
PB 2021, PG 41

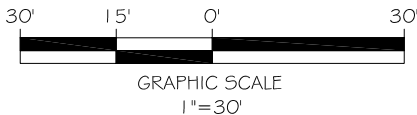


WINDING CREEK DRIVE

50' PUBLIC RW & UTILITY ACCESS

IMPERVIOUS AREAS

HOUSE	1631 SQ. FT.
DRIVE & WALKS	483 SQ. FT.
AVC PAD	9 SQ. FT.
TOTAL	2123 SQ. FT.
ALLOWED	3800 SQ. FT.



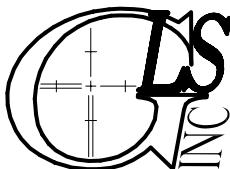
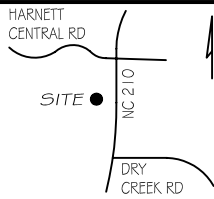
SETBACKS

FRONT	25'
REAR	20'
SIDE	10'
CORNER SIDE	20'

P R E L I M I N A R Y
NOT FOR RECORDATION,
SALES OR CONVEYANCE

LEGEND

EIP	EXISTING IRON PIPE	FES	FLARED END SECTION
IPS	IRON PIPE SET	WM	WATER METER
R/W	RIGHT OF WAY	CO	CLEAN OUT
N/F	NOW OR FORMERLY	FH	FIRE HYDRANT
EIS	EXISTING IRON STAKE	CB	CATCH BASIN



GRIFFIN LAND SURVEYING, INC.

P. O. BOX 148
FUQUAY-VARINA, NC 27526
(919) - 567-1963

FIRM LIC.# C-1345

PLOT PLAN

FOR

DRB HOMES

THE FARM AT
NEILLS CREEK
LOT 64

401 WINDING CREEK DRIVE

NORTH CAROLINA

HARNETT COUNTY NEILL'S CREEK TWSHP

DRAWN BY **KDF**

DATE **1/16/25**

CHECKED BY **MPG**

SCALE **1" = 30'**