

**PLANS DESIGNED TO THE
2018 NORTH CAROLINA STATE
RESIDENTIAL BUILDING CODE**

MEAN ROOF HEIGHT: 19'-9" HEIGHT TO RIDGE: 27'-5"

CLIMATE ZONE	ZONE 3A	ZONE 4A	ZONE 5A
FENESTRATION U-FACTOR	0.35	0.35	0.35
SKYLIGHT U-FACTOR	0.55	0.55	0.55
GLAZED FENESTRATION SHGC	0.30	0.30	0.30
CEILING R-VALUE	38 or 30CI	38 or 30CI	38 or 30CI
WALL R-VALUE	15	15	19
FLOOR R-VALUE	19	19	30
* BASEMENT WALL R-VALUE	5/13	10/15	10/15
** SLAB R-VALUE	0	10	10
* CRAWL SPACE WALL R-VALUE	5/13	10/15	10/19

** 10/13 MEANS R-10 SHEATHING INSULATION OR R-13 CAVITY INSULATION
* INSULATION DEPTH WITH MONOLITHIC SLAB 2" OR FROM INSPECTION GAP TO BOTTOM OF FOOTING INSULATION DEPTH WITH STEM WALL SLAB 2" OR TO BOTTOM OF FOUNDATION WALL

DESIGNED FOR WIND SPEED OF 120 MPH, 3 SECOND GUST (93 FASTEST MILE) EXPOSURE 'B'

COMPONENT & CLADDING DESIGNED FOR THE FOLLOWING LOADS

MEAN ROOF	UP TO 30'	30'-1" TO 35'	35'-1" TO 40'	40'-1" TO 45'
ZONE 1	14.2	-15.0	14.9	-15.8
ZONE 2	14.2	-18.0	14.9	-18.9
ZONE 3	14.2	-18.0	14.9	-18.9
ZONE 4	15.5	-16.0	16.3	-16.8
ZONE 5	15.5	-20.0	16.3	-21.0

DESIGNED FOR WIND SPEED OF 130 MPH, 3 SECOND GUST (101 FASTEST MILE) EXPOSURE 'B'

COMPONENT & CLADDING DESIGNED FOR THE FOLLOWING LOADS

MEAN ROOF	UP TO 30'	30'-1" TO 35'	35'-1" TO 40'	40'-1" TO 45'
ZONE 1	16.7	-18.0	17.5	-18.9
ZONE 2	16.7	-21.0	17.5	-22.1
ZONE 3	16.7	-21.0	17.5	-22.1
ZONE 4	18.2	-19.0	19.1	-20.0
ZONE 5	18.2	-24.0	19.1	-25.2

GUARD RAIL NOTES

SECTION R312

R312.1 Where required. Guards shall be located along open-sided walking surfaces, including stairs, ramps and landings, that are located more than 30 inches (762 mm) measured vertically to the floor or grade below at any point within 36 inches (914 mm) horizontally to the edge of the open side. Insect screening shall not be considered as a guard.

R312.2 Height. Required guards at open-sided walking surfaces, including stairs, porches, balconies or landings, shall be not less than 36 inches (914 mm) high measured vertically above the adjacent walking surface, adjacent fixed seating or the line connecting the leading edges of the treads.

Exceptions:

- Guards on the open sides of stairs shall have a height not less than 34 inches (864 mm) measured vertically from a line connecting the leading edges of the treads.
- Where the top of the guard also serves as a handrail on the open sides of stairs, the top of the guard shall not be not less than 34 inches (864 mm) and not more than 38 inches (965 mm) measured vertically from a line connecting the leading edges of the treads.

R312.3 Opening limitations. Required guards shall not have openings from the walking surface to the required guard height which allow passage of a sphere 4 inches (102 mm) in diameter.

Exceptions:

- The triangular openings at the open side of a stair, formed by the riser, tread and bottom rail of a guard, shall not allow passage of a sphere 6 inches (153 mm) in diameter.
- Guards on the open sides of stairs shall not have openings which allow passage of a sphere 4 3/8 inches (111 mm) in diameter.

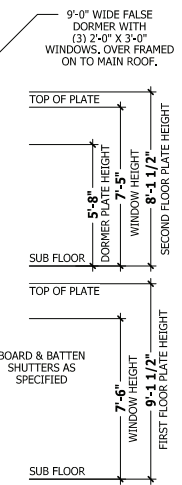
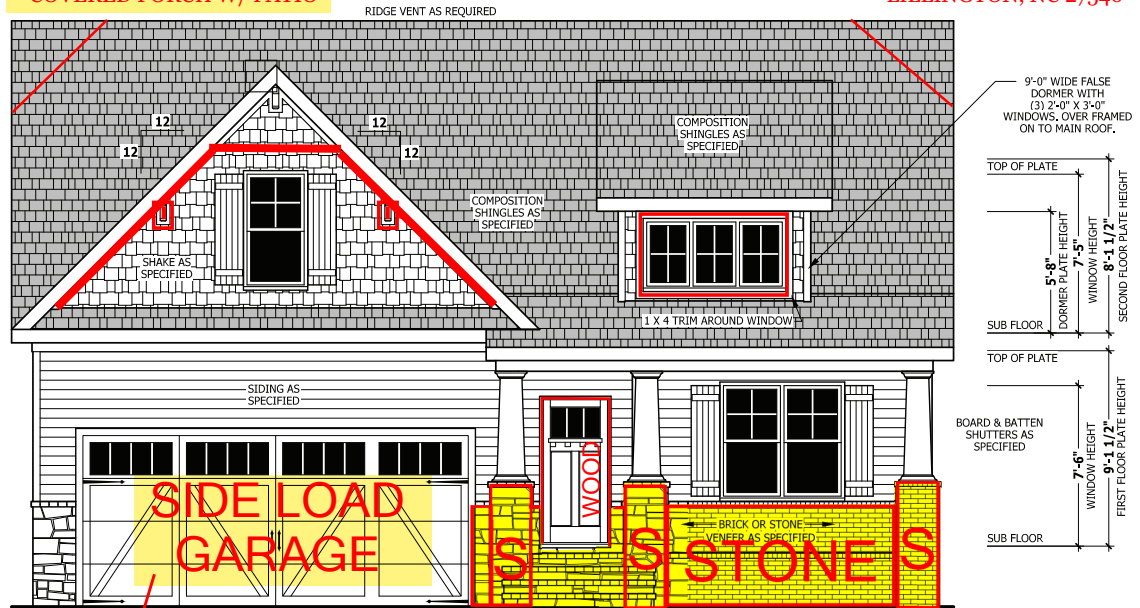
ROOF VENTILATION

SECTION R806

SQUARE FOOTAGE OF ROOF TO BE VENTED = 2,477 SQ.FT.
NET FREE CROSS VENTILATION NEEDED:
WITHOUT 50% TO 80% OF VENTING 3'-0" ABOVE EAVE = 16.51 SQ.FT.
WITH 50% TO 80% OF VENTING 3'-0" ABOVE EAVE; OR WITH CLASS I OR II VAPOR RETARDER ON WARM-IN-WINTER SIDE OF CEILING = 8.26 SQ.FT.

**3 CAR GARAGE
TUDOR HIP ROOF
COVERED PORCH W/ PATIO**

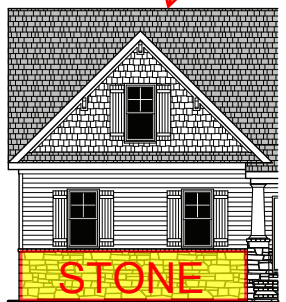
**ELBRIDGE FARM - LOT 3A
31 GRIFFIN ROAD
LILLINGTON, NC 27546**



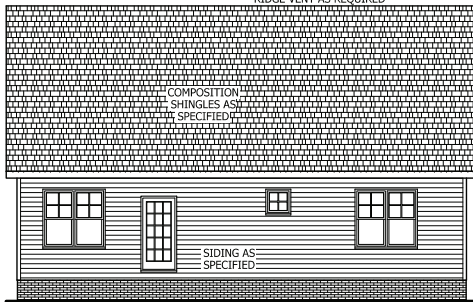
FRONT ELEVATION
SCALE 1/4" = 1'-0"

SQUARE FOOTAGE

HEATED	1766 SQ.FT.
FIRST FLOOR	1766 SQ.FT.
PLAYROOM	400 SQ.FT.
TOTAL	2166 SQ.FT.
HEATED OPTIONAL	
CAROLINA ROOM	148 SQ.FT.
RECREATION ROOM	304 SQ.FT.
TOTAL	452 SQ.FT.
UNHEATED	
FRONT PORCH	188 SQ.FT.
GARAGE	488 SQ.FT.
TOTAL	676 SQ.FT.
UNHEATED OPTIONAL	
SCREENED PORCH	160 SQ.FT.
DECK / PATIO	108 SQ.FT.
THIRD GARAGE	292 SQ.FT.
TOTAL	560 SQ.FT.



WINDOWS WITH SIDE LOAD

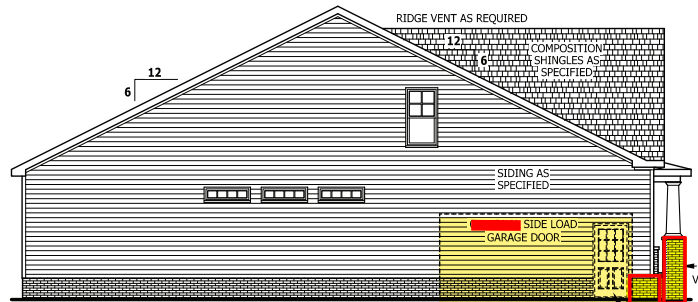


REAR ELEVATION
SCALE 1/8" = 1'-0"

AIR LEAKAGE

Section N1102.4
N1102.4.1 Building thermal envelope. The building thermal envelope shall be durably sealed with an air barrier system to limit infiltration. The sealing methods between dissimilar materials shall allow for differential expansion and contraction. For all homes where present, the following shall be caulked, gasketed, weather stripped or otherwise sealed with an air barrier material or solid material consistent with Appendix E-2.4 of this code:

- Blocking and sealing floor/ceiling systems and under knee walls open to unconditioned or exterior space.
- Capping and sealing shafts or chases, including flue shafts.
- Capping and sealing soffit or dropped ceiling areas.



LEFT SIDE ELEVATION
SCALE 1/8" = 1'-0"



RIGHT SIDE ELEVATION
SCALE 1/8" = 1'-0"

PURCHASER MUST VERIFY ALL DIMENSIONS AND CONDITIONS BEFORE CONSTRUCTION BEGINS. HAYNES HOME PLANS, INC. ASSUMES NO LIABILITY FOR CONTRACTORS PRACTICES AND PROCEDURES. CODES AND CONDITIONS MAY VARY WITH LOCATION, A LOCAL DESIGNER, ARCHITECT OR ENGINEER SHOULD BE CONSULTED BEFORE CONSTRUCTION. THESE DRAWINGS ARE INSTRUMENTS OF SERVICE AND AS SUCH SHALL REMAIN PROPERTY OF THE DESIGNER.

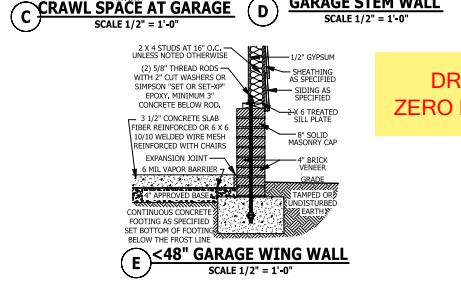
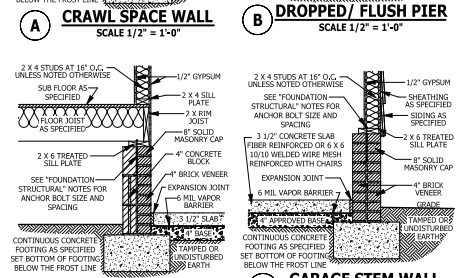
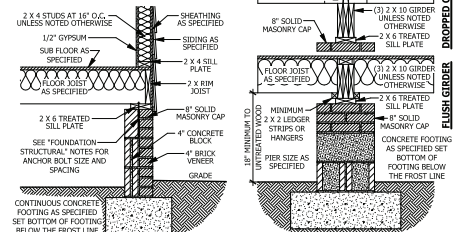
ELEVATION
The Lauren H

HAYNES WEAVER HOMES
HOME PLANS, INC.
P.O. BOX 702, WAKE FOREST, NC 27588 919-456-6180 FAX 919-456-4936
910.670.2100 919.006.4696
www.haynesweaverhomes.com

SQUARE FOOTAGE

HEATED	1766 SQ.FT.
FIRST FLOOR	1766 SQ.FT.
PLAYROOM	400 SQ.FT.
TOTAL	2166 SQ.FT.
HEATED OPTIONAL	
CAROLINA ROOM	148 SQ.FT.
RECREATION ROOM	304 SQ.FT.
TOTAL	452 SQ.FT.
UNHEATED	
FRONT PORCH	188 SQ.FT.
GARAGE	488 SQ.FT.
TOTAL	676 SQ.FT.
UNHEATED OPTIONAL	
SCREENED PORCH	160 SQ.FT.
DECK / PATIO	108 SQ.FT.
THIRD GARAGE	292 SQ.FT.
TOTAL	560 SQ.FT.

**3 CAR GARAGE
TUDOR HIP ROOF
COVERED PORCH W/ PATIO**



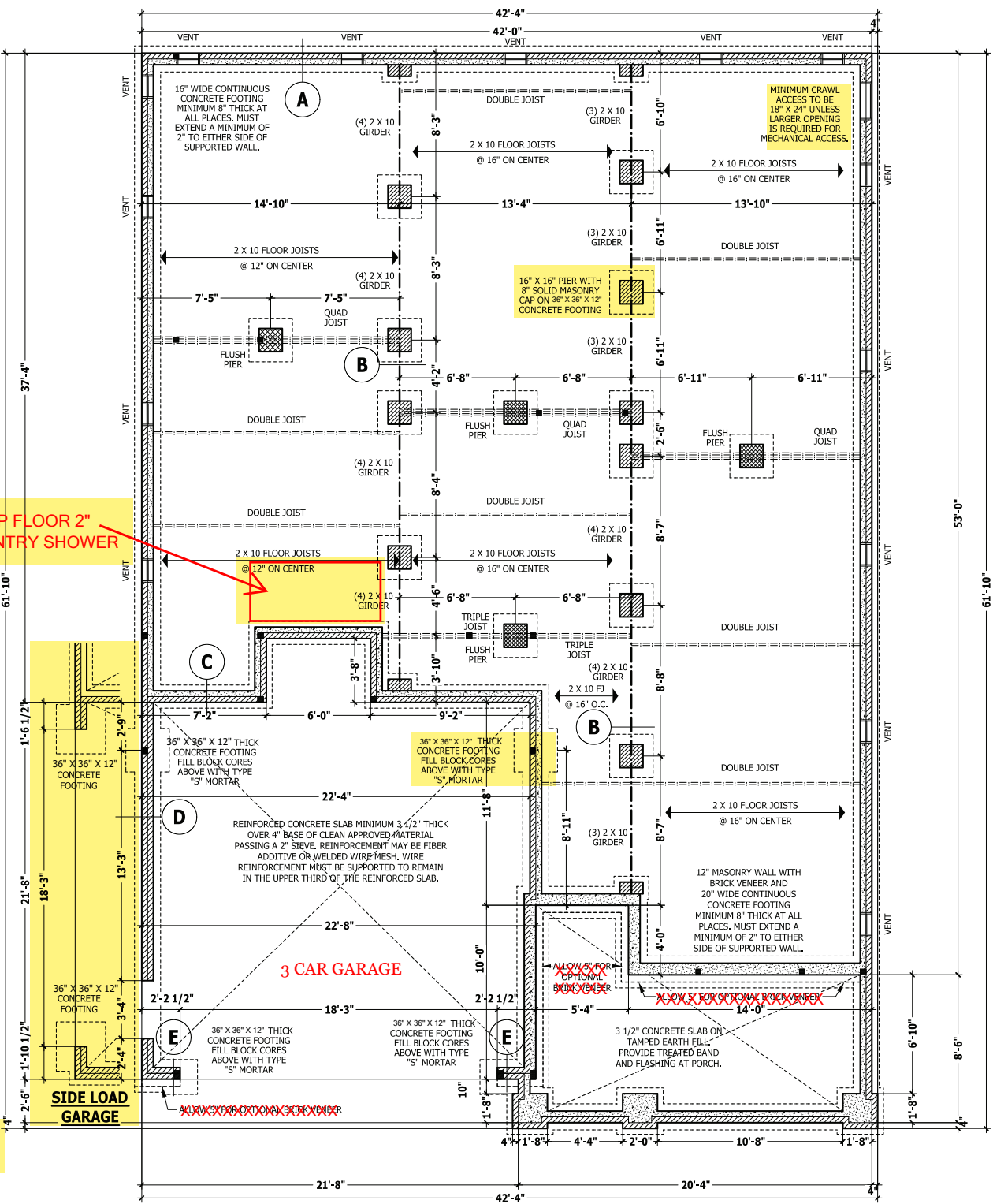
**CLOSED CRAWL PER R409 OR
WALL VENTED CRAWL SPACE**

UNDER-FLOOR SPACE (SECTION R408)
 SQUARE FOOTAGE OF FOUNDATION TO BE VENTED = 1,704 SQ.FT.
 WITHOUT CROSS VENTILATION AREA OF VENTING NEEDED = 1,136 SQ.FT.
 WITH CROSS VENTILATION AREA OF VENTING NEEDED = 1,136 SQ.FT.
 NOTE: NUMBER OF VENTS NEED VARY DEPENDING ON VENTS
 USED AND CROSS VENTILATION.

FOUNDATION STRUCTURAL

115 to 130 mph wind zone (1 1/2 to 2 1/2 story)
CONTINUOUS FOOTING: 16" wide and 8" thick minimum, 20" wide minimum at brick veneer. Must extend 2" to either side of supported wall.
GIRDERS: (3) 2 X 10 girder unless noted otherwise.
PIERS: 16" X 16" piers with 8" solid masonry cap on 30" X 30" X 10" concrete footing with maximum pier height of 64" with hollow masonry and 160" with solid masonry.
POINT LOADS: ■ designates significant point load and should have solid blocking to pier, girder or foundation wall.
115 and 120 MPH ANCHORS BOLTS: 1/2" diameter anchor bolts embedded minimum 7", maximum 6'-0" on center, within 12" of plate ends, and minimum two anchor bolts per plate.
130 MPH ANCHORS BOLTS: 1/2" diameter anchor bolts embedded minimum 15", maximum 4'-0" on center, within 12" of plate ends, and minimum two anchor bolts per plate.
CONCRETE: Concrete shall have a minimum 28 day strength of 3000 psi and a maximum 5" slump. Air entrained per table 402.2. All concrete shall be in accordance with ACI standards. All samples for pumping shall be taken from the exit end of the pump.
SOILS: Allowable soil bearing pressure assumed to be 2000 PSF. The contractor must contact a geotechnical engineer and a structural engineer if unsatisfactory subsurface conditions are encountered. The surface area adjacent to the foundation wall shall be provided with adequate drainage, and shall be graded so as to drain surface water away from foundation walls.

CRAWL SPACE PLAN
SCALE 1/4" = 1'-0"



PURCHASER MUST VERIFY ALL DIMENSIONS AND CONDITIONS BEFORE CONSTRUCTION BEGINS.
 HAYNES HOME PLANS, INC. ASSUMES NO LIABILITY FOR CONTRACTORS PRACTICES AND PROCEDURES.
 CODES AND CONDITIONS MAY VARY WITH LOCATION, A LOCAL DESIGNER, ARCHITECT OR ENGINEER SHOULD BE CONSULTED BEFORE CONSTRUCTION. THESE DRAWINGS ARE INSTRUMENTS OF SERVICE AND AS SUCH SHALL REMAIN PROPERTY OF THE DESIGNER.

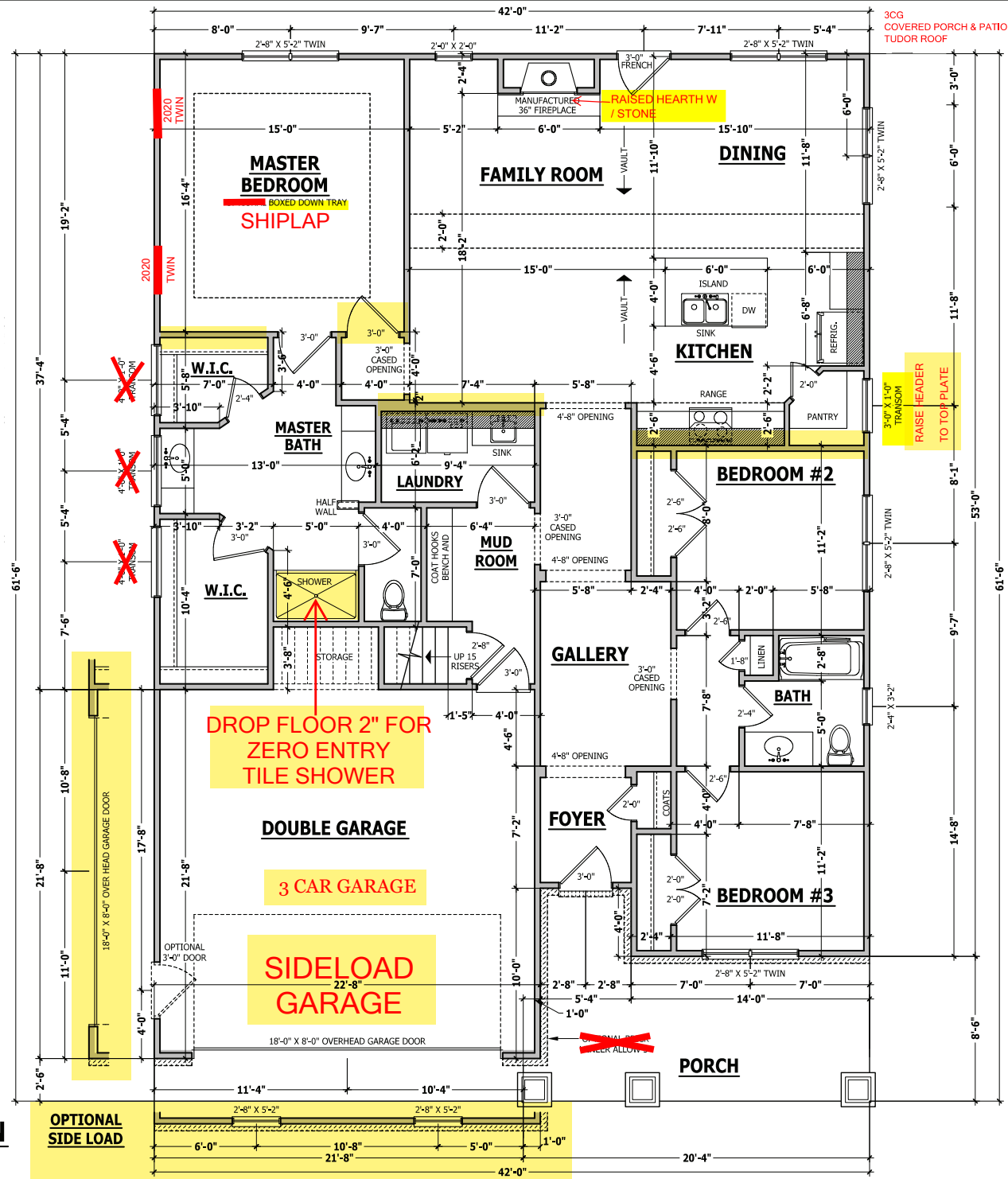
CRAWL SPACE PLAN
The Lauren H

HAYNES WEAVER
HOME PLANS, INC.
 9140-696-2100 • 919-666-4996
 100 Wagonwheel Way, Haynes, NC 27838

HOME PLANS, INC.
 P.O. Box 702, Wake Forest, NC 27888 919-435-6180 Fax 1-866-81-0036

SQUARE FOOTAGE	
HEATED FIRST FLOOR	1766 SQ.FT.
HEATED SECOND FLOOR	400 SQ.FT.
TOTAL	2166 SQ.FT.
HEATED OPTIONAL	
BREAKFAST ROOM	188 SQ.FT.
RECREATION ROOM	304 SQ.FT.
TOTAL	492 SQ.FT.
UNHEATED	
FRONT PORCH	188 SQ.FT.
GARAGE	480 SQ.FT.
TOTAL	668 SQ.FT.
UNHEATED OPTIONAL	
SCREENED PORCH	188 SQ.FT.
DECK / PATIO	188 SQ.FT.
THIRD GARAGE	300 SQ.FT.
TOTAL	676 SQ.FT.

7' 0 INTERIOR DOORS



3CG COVERED PORCH & PATIO TUDOR ROOF

36" X 1 1/2" TRANSOM
RAISE HEADER TO TOP PLATE

SQUARE FOOTAGE

HEATED	
FIRST FLOOR	1766 SQ.FT.
PLAYROOM	400 SQ.FT.
TOTAL	2166 SQ.FT.
HEATED OPTIONAL	
CAROLINA ROOM	148 SQ.FT.
RECREATION ROOM	304 SQ.FT.
TOTAL	452 SQ.FT.
UNHEATED	
FRONT PORCH	188 SQ.FT.
GARAGE	488 SQ.FT.
TOTAL	676 SQ.FT.
UNHEATED OPTIONAL	
SCREENED PORCH	160 SQ.FT.
DECK / PATIO	108 SQ.FT.
THIRD GARAGE	292 SQ.FT.
TOTAL	560 SQ.FT.

FIRST FLOOR PLAN
SCALE 1/4" = 1'-0"

PURCHASER MUST VERIFY ALL DIMENSIONS AND CONDITIONS BEFORE CONSTRUCTION BEGINS. HAYNES HOME PLANS, INC. ASSUMES NO LIABILITY FOR CONTRACTOR PRACTICES AND PROCEDURES. CODES AND CONDITIONS MAY VARY WITH LOCATION, A LOCAL DESIGNER, ARCHITECT OR ENGINEER SHOULD BE CONSULTED BEFORE CONSTRUCTION. THESE DRAWINGS ARE INSTRUMENTS OF SERVICE AND AS SUCH SHALL REMAIN PROPERTY OF THE DESIGNER.

FIRST FLOOR PLAN
The Lauren H

HAYNES WEAVER HOMES
910.630.2100 • 919.606.4696
Haynes Home Plans, Inc. © 2020

HAYNES HOME PLANS, INC.
P.O. BOX 702, WAKE FOREST, NC 27888 919-435-6180 FAX 919-435-6149

SQUARE FOOTAGE

HEATED	
FIRST FLOOR	1766 SQ.FT.
PLAYROOM	400 SQ.FT.
TOTAL	2166 SQ.FT.
HEATED OPTIONAL	
CAROLINA ROOM	148 SQ.FT.
RECREATION ROOM	304 SQ.FT.
TOTAL	452 SQ.FT.
UNHEATED	
FRONT PORCH	188 SQ.FT.
GARAGE	488 SQ.FT.
TOTAL	676 SQ.FT.
UNHEATED OPTIONAL	
SCREENED PORCH	160 SQ.FT.
DECK / PATIO	108 SQ.FT.
THIRD GARAGE	292 SQ.FT.
TOTAL	560 SQ.FT.

STRUCTURAL NOTES

All construction shall conform to the latest requirements of the 2018 North Carolina Residential Building Code, plus all local codes and regulations. This document in no way shall be construed to supersede the code.

JOB SITE PRACTICES AND SAFETY: Haynes Home Plans, Inc. assumes no liability for contractors practices and procedures or safety program. Haynes Home Plans, Inc. takes no responsibility for the contractor's failure to carry out the construction work in accordance with the contract documents. All members shall be framed, anchored, and braced in accordance with good construction practice and the building code.

DESIGN LOADS	LIVE LOAD (PSF)	DEAD LOAD (PSF)	DEFLECTION (LL)
Attics without storage	10	10	L/240
Attics with limited storage	20	10	L/360
Attics with fixed stairs	40	10	L/360
Balconies and decks	40	10	L/360
Fire escapes	40	10	L/360
Guardrails and handrails	200	--	--
Guardrail in-fill components	50	--	--
Passenger vehicle garages	50	10	L/360
Rooms other than sleeping	40	10	L/360
Sleeping rooms	30	10	L/360
Stairs	40	--	L/360
Snow	20	--	--

FRAMING LUMBER: All non treated framing lumber shall be SPF #2 (Fb = 875 PSI) or SYP #2 (Fb = 750 PSI) and all treated lumber shall be SYP #2 (Fb = 750 PSI) unless noted otherwise.

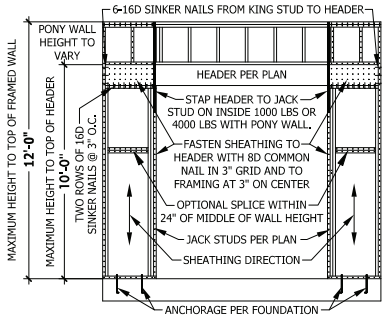
ENGINEERED WOOD BEAMS: Laminated veneer Lumber (LVL) = F=2600 PSI, E=1.9x10⁶ PSI Parallel strand Lumber (PSL) = F=2000 PSI, E=2.0x10⁶ PSI Laminated strand lumber (LSL) = F=2250 PSI, E=1.5x10⁶ PSI. Install all connectors per manufacturer instructions.

TRUSS AND I-JOIST MEMBERS: All roof truss and I-joist layouts shall be prepared in accordance with this document. Trusses and I-joists shall be installed according to the manufacturer's specifications. Any change in truss or I-joist layout shall be coordinated with Haynes Homes Plans, Inc. **LINTELS:** Brick lintels shall be 3 1/2" x 3 1/2" x 1/4" steel angle for up to 6'-0" span, 6" x 4" x 5/16" steel angle with 6" leg vertical for spans up to 9'-0" unless noted otherwise. 3 1/2" x 3 1/2" x 1/4" steel angle with 1/2" bolts at 2'-0" on center for spans up to 18'-0" unless noted otherwise.

FLOOR SHEATHING: OSB or CDX floor sheathing minimum 1/2" thick for 16" on center joist spacing, minimum 5/8" thick for 19.2" on center joist spacing, and minimum 3/4" thick for 24" on center joist spacing.

ROOF SHEATHING: OSB or CDX roof sheathing minimum 3/8" thick for 16" on center rafters and 7/16" for 24" on center rafters.

CONCRETE AND SOILS: See foundation notes.



ROOF TRUSS REQUIREMENTS

TRUSS DESIGN: Trusses to be designed and engineered in accordance with these drawings. Any variation with these drawings must be brought to Haynes Home Plans, Inc. attention before construction begins.

KNEE WALL AND CEILING HEIGHTS: All finished knee wall heights and ceiling heights are shown turned down 10" from roof decking for insulation. If for any reason the truss manufacturer fails to meet or exceed designated heel heights, finished knee wall heights, or finished ceiling heights shown on these drawings the finished square footage may vary. Any discrepancy must be brought to Haynes Home Plans, Inc. attention, so a suitable solution can be reached before construction begins. Any variation due to these conditions not being met is the responsibility of the truss manufacturer.

ANCHORAGE: All required anchors for trusses due to uplift or bearing shall meet the requirements as specified on the truss schematics.

BEARING: All trusses shall be designed for bearing on SPF #2 plates or joists unless noted otherwise.

Plate Heights & Floor Systems: See elevation page(s) for plate heights and floor system thicknesses.

EXTERIOR HEADERS

-- (2) 2 X 6 WITH 1 JACK STUD EACH END UNLESS NOTED OTHERWISE
KING STUDS EACH END PER TABLE BELOW

HEADER SPAN	< 3'	3'-4'	4'-8'	8'-12'	12'-16'
KING STUDS	1	2	3	5	6

INTERIOR HEADERS

-- **LOAD BEARING HEADERS (2) 2 X 6 WITH 1 JACK STUD AND 1 KING STUD EACH END UNLESS NOTED OTHERWISE**
-- **NON LOAD BEARING HEADERS TO BE LADDER FRAMED**

BRACE WALL PANEL NOTES

EXTERIOR WALLS: All exterior walls to be sheathed with CS-WSP or CS-SFB in accordance with section R602.10.3 unless noted otherwise.

GYPSUM: All interior sides of exterior walls and both sides interior walls to have 1/2" gypsum installed. When not using method GB gypsum to be fastened per table R702.3.5, Method GB to be fastened per table R602.10.1.

REQUIRED LENGTH OF BRACING: Required brace wall length for each side of the circumscribed rectangle are interpolated per table R602.10.3. Methods CS-WSP and CS-SFB contribute their actual length. Method GB contributes 0.5 it's actual length. Method PF contributes 1.5 times its actual length.

HD: 800 lbs hold down hold down device fastened to the edge of the brace wall panel closest to the corner.

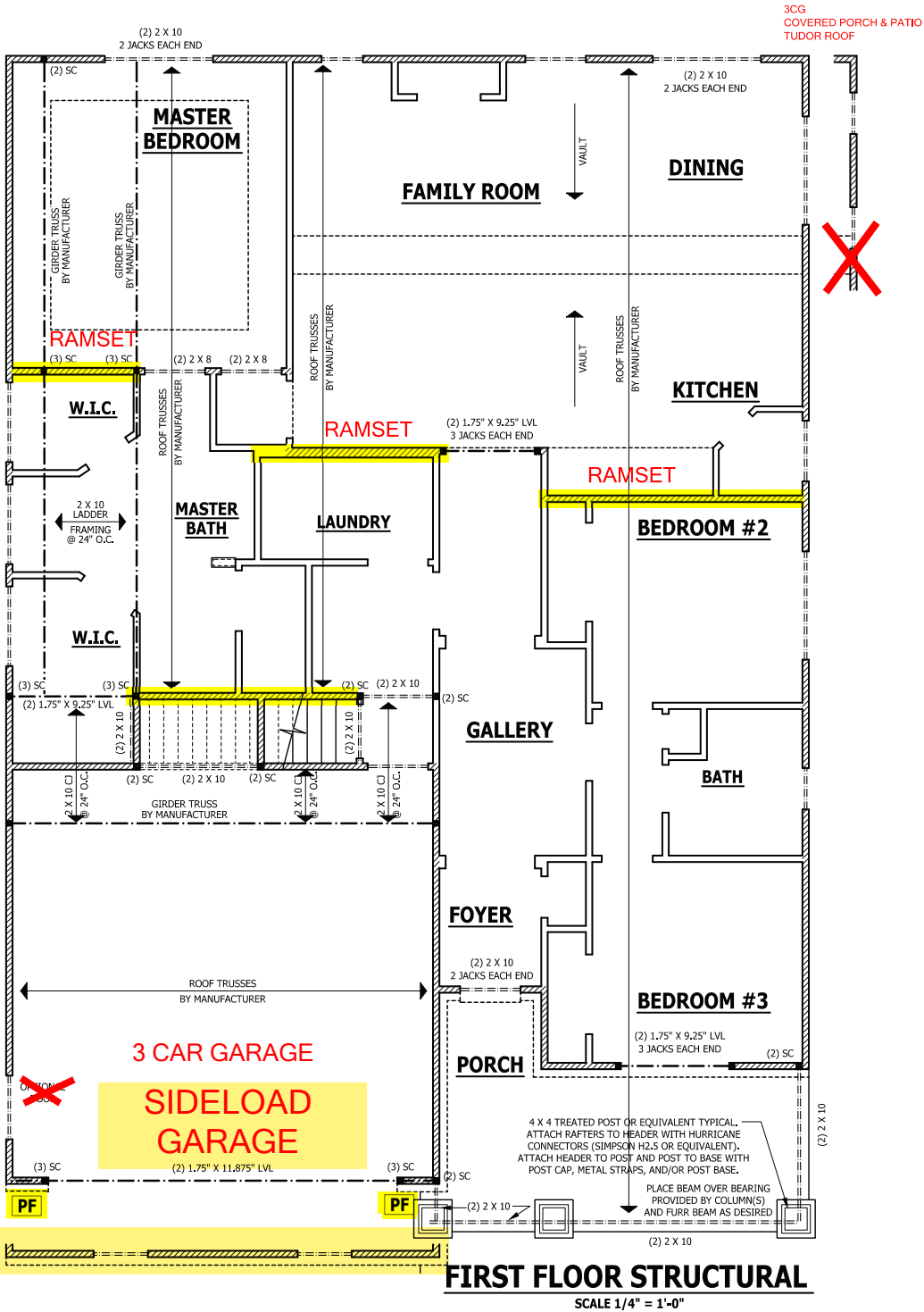
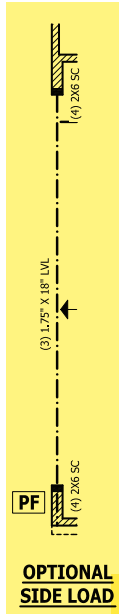
Methods Per Table R602.10.1

CS-WSP: Shall be minimum 3/8" OSB or CDX nailed at 6" on center at edges and 12" on center at intermediate supports with 6d common nails or 8d(2 1/2" long x 0.113" diameter).

CS-SFB: Shall be minimum 1/2" structural fiber board nailed at 3" on center at edges and 3" on center at intermediate supports with 1 1/2" long x 0.12" diameter galvanized roofing nails.

GB: Interior walls show as GB are to have minimum 1/2" gypsum board on both sides of the wall fastened at 7" on center at edges and 7" on center at intermediate supports with minimum 5d cooler nails or #6 screws.

PF: Portal frame per figure R602.10.1



PURCHASER MUST VERIFY ALL DIMENSIONS AND CONDITIONS BEFORE CONSTRUCTION BEGINS. HAYNES HOME PLANS, INC. ASSUMES NO LIABILITY FOR CONTRACTORS PRACTICES AND PROCEDURES. CODES AND CONDITIONS MAY VARY WITH LOCATION, A LOCAL BUSINESS, ARCHITECT OR ENGINEER SHOULD BE CONSULTED BEFORE CONSTRUCTION. THESE DRAWINGS ARE INSTRUMENTS OF SERVICE AND AS SUCH SHALL REMAIN PROPERTY OF THE DESIGNER.

FIRST FLOOR STRUCTURAL
The Lauren H

HAYNES WEAVER HOMES
910.630.2100 • 919.606.4696
3000 W. HAYNES DRIVE, WAYNE, NC 27886

HAYNES HOME PLANS, INC.
P.O. BOX 702, WAYNE FOREST, NC 27886 919-435-6180 Fax 1-866-81-1439

SQUARE FOOTAGE HEATED	
FIRST FLOOR	4936 SQ.FT.
SECOND FLOOR	4888 SQ.FT.
TOTAL	9824 SQ.FT.
HEATED OPTIONAL	
CAROLINA ROOM	148 SQ.FT.
DISCRETION ROOM	304 SQ.FT.
TOTAL	452 SQ.FT.
UNHEATED	
FRONT PORCH	188 SQ.FT.
SCREENED PORCH	108 SQ.FT.
DECK PATIO	108 SQ.FT.
THIRD GARAGE	252 SQ.FT.
TOTAL	666 SQ.FT.

© Copyright 2020 Haynes Home Plans, Inc.
2/24/2020
200219B
PAGE 4 OF 7

ROOF TRUSS REQUIREMENTS

TRUSS DESIGN. Trusses to be designed and engineered in accordance with these drawings. Any variation with these drawings must be brought to Haynes Home Plans, Inc. attention before construction begins.

KNEE WALL AND CEILING HEIGHTS. All finished knee wall heights and ceiling heights are shown furred down 10" from roof decking for insulation. If for any reason the truss manufacturer fails to meet or exceed designated heel heights, finished knee wall heights, or finished ceiling heights shown on these drawings the finished square footage may vary. Any discrepancy must be brought to Haynes Home Plans, Inc. attention, so a suitable solution can be reached before construction begins. Any variation due to these conditions not being met is the responsibility of the truss manufacturer.

ANCHORAGE. All required anchors for trusses due to uplift or bearing shall meet the requirements as specified on the truss schematics.

BEARING. All trusses shall be designed for bearing on SPF #2 plates or ledgers unless noted otherwise.

Plate Heights & Floor Systems. See elevation page(s) for plate heights and floor system thicknesses.

STRUCTURAL NOTES

All construction shall conform to the latest requirements of the 2018 North Carolina Residential Building Code, plus all local codes and regulations. This document in no way shall be construed to supersede the code.

JOB SITE PRACTICES AND SAFETY: Haynes Home Plans, Inc. assumes no liability for contractor practices and procedures or safety program, Haynes Home Plans, Inc. takes no responsibility for the contractor's failure to carry out the construction work in accordance with the contract documents. All members shall be framed, anchored, and braced in accordance with good construction practice and the building code.

DESIGN LOADS	LIVE LOAD (PSF)	DEAD LOAD (PSF)	DEFLECTION (LL)
Attics without storage	10	-	L/240
Attics with limited storage	20	10	L/360
Attics with fixed stairs	40	10	L/360
Balconies and decks	40	10	L/360
Fire escapes	40	10	L/360
Guardrails and handrails	200	-	-
Guardrail in-fill components	50	-	-
Passenger vehicle garages	50	10	L/360
Rooms other than sleeping	40	10	L/360
Sleeping rooms	30	10	L/360
Stairs	40	-	L/360
Snow	20	-	-

FRAMING LUMBER: All non treated framing lumber shall be SPF #2 (Fb = 875 PSI) or SYP #2 (Fb = 750 PSI) and all treated lumber shall be SYP #2 (Fb = 750 PSI) unless noted otherwise.

ENGINEERED WOOD MEMBERS:
Laminated veneer Lumber (LVL) = Fb=2600 PSI, Fv=285 PSI, E=1.9x10⁶ PSI
Parallel strand Lumber (PSL) = Fb=2900 PSI, Fv=290 PSI, E=2.0x10⁶ PSI
Laminated strand Lumber (LSL) Fb=2250 PSI, Fv=400 PSI, E=1.55x10⁶ PSI
Install all connections per manufacturer instructions.

TRUSS AND I-JOIST MEMBERS: All roof truss and I-joist layouts shall be prepared in accordance with this document. Trusses and I-joists shall be installed according to the manufacturer's specifications. Any change in truss or I-joist layout shall be coordinated with Haynes Home Plans, Inc.

LINTELS: Brick lintels shall be 3 1/2" x 3 1/2" x 1/4" steel angle for up to 6'-0" span, 6" x 4" x 5/16" steel angle with 6" leg vertical for spans up to 9'-0" unless noted otherwise, 3 1/2" x 3 1/2" x 1/4" steel angle with 1/2" bolts at 4'-0" on center for spans up to 18'-0" unless noted otherwise.

FLOOR SHEATHING: OSB or CDX floor sheathing minimum 1/2" thick for 16" on center joist spacing, minimum 5/8" thick for 19.2" on center joist spacing, and minimum 3/4" thick for 24" on center joist spacing.

ROOF SHEATHING: OSB or CDX roof sheathing minimum 3/8" thick for 16" on center rafters and 7/16" for 24" on center rafters.

CONCRETE AND SOILS: See foundation notes.

ATTIC ACCESS

SECTION R807
R807.1 Attic access. An attic access opening shall be provided to attic areas that exceed 400 square feet (37.16 m²) and have a vertical height of 60 inches (1524 mm) or greater. The net clear opening shall not be less than 20 inches by 30 inches (508 mm by 762 mm) and shall be located in a hallway or other readily accessible location. A 20-inch (762 mm) minimum unobstructed headroom in the attic space shall be provided at some point above the access opening. See Section M1305.1.3 for access requirements where mechanical equipment is located in attics.

Exceptions
1. Concealed areas not located over the main structure including porches, areas behind knee walls, dormers, bay windows, etc. are not required to have access.
2. Pull down stair treads, stringers, handrails, and hardware may protrude into the net clear opening.

EXTERIOR HEADERS

-(2) 2 X 6 WITH 1 JACK STUD EACH END UNLESS NOTED OTHERWISE

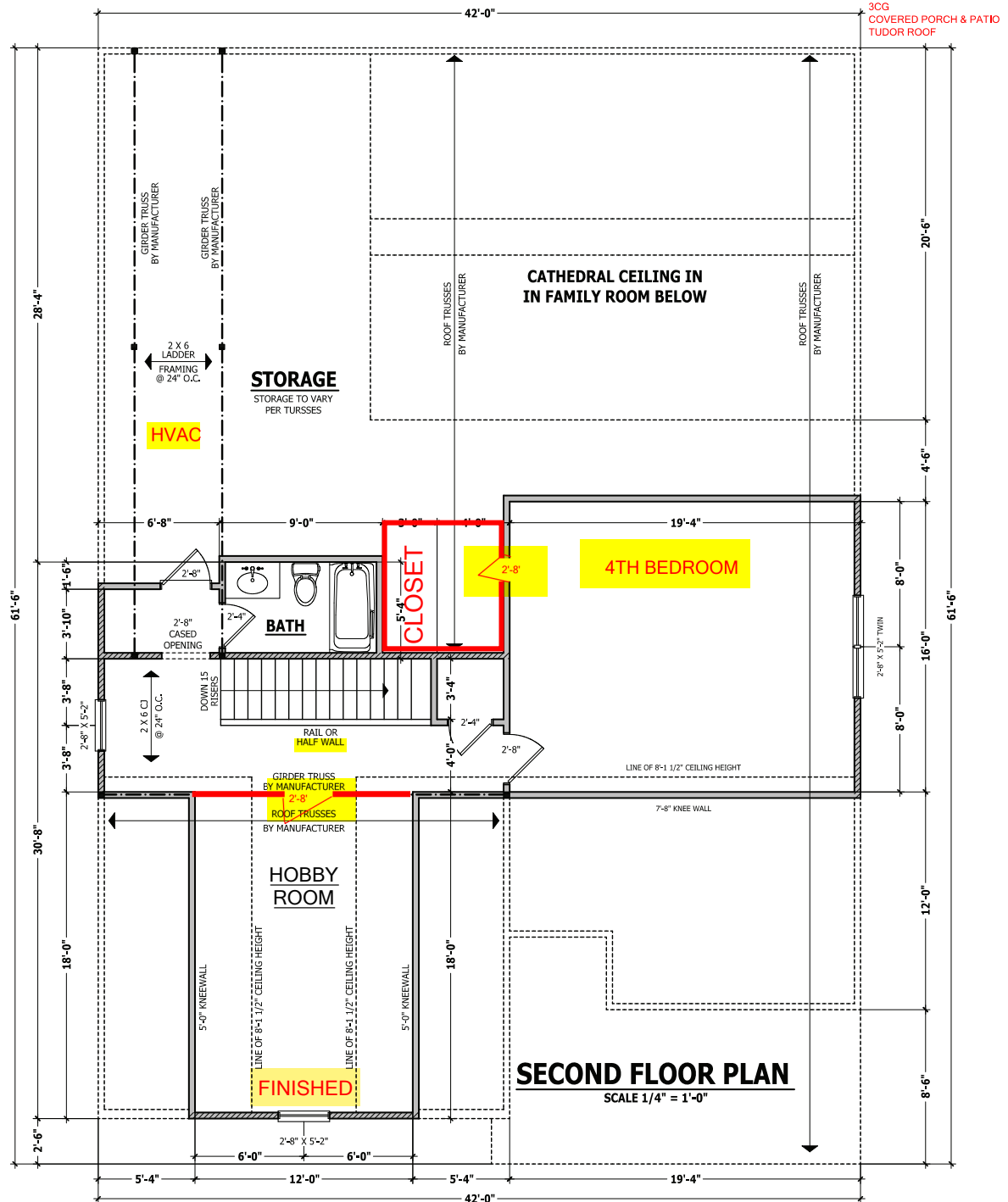
- KING STUDS EACH END PER TABLE BELOW

HEADER SPAN	< 3'	3'-4'	4'-8'	8'-12'	12'-16'
KING STUD(S)	1	2	3	5	6

INTERIOR HEADERS

- LOAD BEARING HEADERS (2) 2 X 6 WITH 1 JACK STUD AND 1 KING STUD EACH END UNLESS NOTED OTHERWISE

- NON LOAD BEARING HEADERS TO BE LADDER FRAMED



SECOND FLOOR PLAN

The Lauren H

HAYNES WEAVER HOMES
HOME PLANS, INC.
P.O. BOX 702, WAKE FOREST, NC 27886 919-435-6180 Fax 919-466-8143

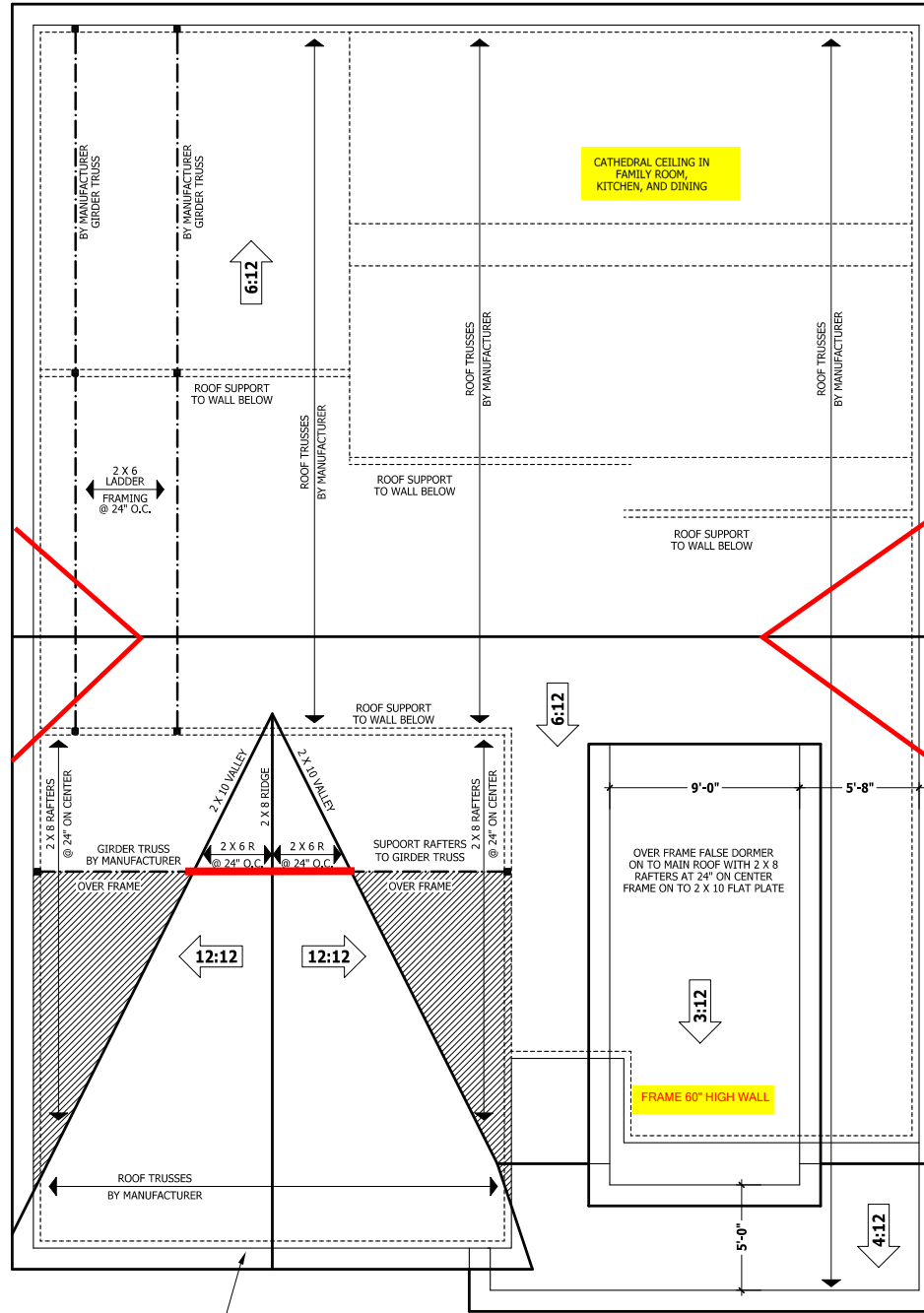
910.680.2100 • 919.606.4696
© Copyright Haynes Home Plans, Inc. 2020

SQUARE FOOTAGE

HEATED	HEATED
FIRST FLOOR	2766 SQ.FT.
SECOND FLOOR	4021 SQ.FT.
TOTAL	6787 SQ.FT.
UNHEATED	
SCREENED PORCH	188 SQ.FT.
DECK	488 SQ.FT.
TOTAL	672 SQ.FT.
UNHEATED OPTIONAL	
SCREENED PORCH	160 SQ.FT.
DECK	108 SQ.FT.
THIRD GARAGE	252 SQ.FT.
TOTAL	564 SQ.FT.

© Copyright 2020
Haynes Home Plans, Inc.
2/24/2020
200219B
PAGE 5 OF 7

**TUDOR HIP ROOF
COVERED PORCH
W/ PATIO
3 CAR GARAGE**



ROOF PLAN
SCALE 1/4" = 1'-0"

ROOF TRUSS REQUIREMENTS

TRUSS DESIGN. Trusses to be designed and engineered in accordance with these drawings. Any variation with these drawings must be brought to Haynes Home Plan, Inc. attention before construction begins.

KNEE WALL AND CEILING HEIGHTS. All finished knee wall heights and ceiling heights are shown furred down 10" from roof decking for insulation. If for any reason the truss manufacturer fails to meet or exceed designated heel heights, finished knee wall heights, or finished ceiling heights shown on these drawings the finished square footage may vary. Any discrepancy must be brought to Haynes Home Plans, Inc. attention, so a suitable solution can be reached before construction begins. Any variation due to these conditions not being met is the responsibility of the truss manufacturer.

ANCHORAGE. All required anchors for trusses due to uplift or bearing shall meet the requirements as specified on the truss schematics.

BEARING. All trusses shall be designed for bearing on SPF #2 plates or ledgers unless noted otherwise.

Plate Heights & Floor Systems. See elevation page(s) for plate heights and floor system thicknesses.

● HEEL HEIGHT ABOVE FIRST FLOOR PLATE

● HEEL HEIGHT ABOVE SECOND FLOOR PLATE

PURCHASER MUST VERIFY ALL DIMENSIONS AND CONDITIONS BEFORE CONSTRUCTION BEGINS. HAYNES HOME PLANS, INC. ASSUMES NO LIABILITY FOR CONTRACTORS PRACTICES AND PROCEDURES. CODES AND CONDITIONS MAY VARY WITH LOCATION, A LOCAL DESIGNER, ARCHITECT OR ENGINEER SHOULD BE CONSULTED BEFORE CONSTRUCTION. THESE DRAWINGS ARE INSTRUMENTS OF SERVICE AND AS SUCH SHALL REMAIN PROPERTY OF THE DESIGNER.

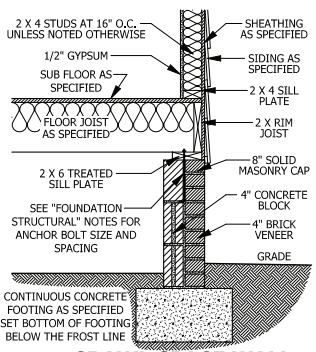
ROOF PLAN
The Lauren H

HAYNES WEAVER HOMES
910.630.2100 • 919.606.4696
P.O. BOX 702, WAKE FOREST, NC 27888 919-435-6180 FAX 919-435-6180

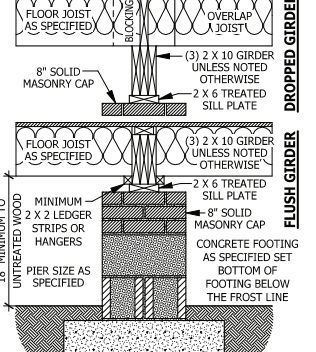
HAYNES HOME PLANS, INC.
P.O. BOX 702, WAKE FOREST, NC 27888 919-435-6180 FAX 919-435-6180

SQUARE FOOTAGE HEATED	
FIRST FLOOR	2766 SQ.FT.
BASEMENT	400 SQ.FT.
TOTAL	3166 SQ.FT.
HEATED OPTIONAL	
CAROLINA ROOM	148 SQ.FT.
DISCUSSION ROOM	304 SQ.FT.
TOTAL	452 SQ.FT.
UNHEATED	
FRONT PORCH	188 SQ.FT.
GARAGE	488 SQ.FT.
TOTAL	676 SQ.FT.
UNHEATED OPTIONAL	
SCREENED PORCH	160 SQ.FT.
DECK PATIO	108 SQ.FT.
THIRD GARAGE	252 SQ.FT.
TOTAL	520 SQ.FT.

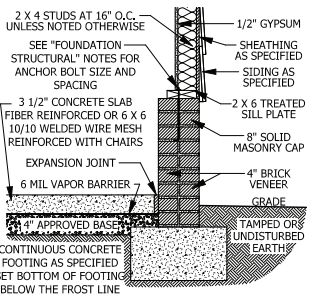
© Copyright 2020
Haynes Home Plans, Inc.
2/24/2020
200219B
PAGE 6 OF 7



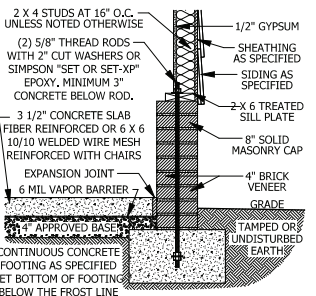
A CRAWL SPACE WALL
SCALE 3/4" = 1'-0"



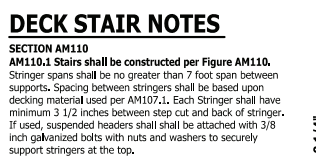
B DROPPED/ FLUSH PIER
SCALE 3/4" = 1'-0"



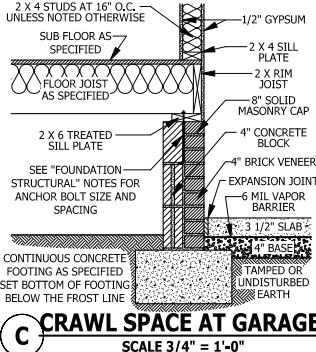
D GARAGE STEM WALL
SCALE 3/4" = 1'-0"



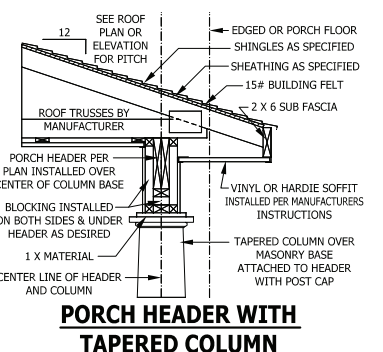
E <48" GARAGE WING WALL
SCALE 3/4" = 1'-0"



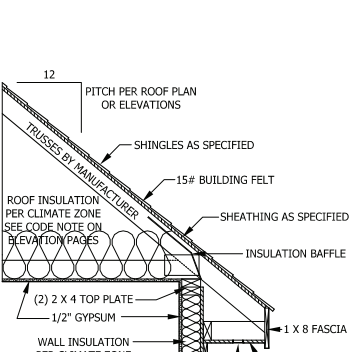
C CRAWL SPACE AT GARAGE
SCALE 3/4" = 1'-0"



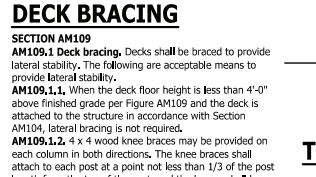
C PORCH HEADER WITH TAPERED COLUMN
SCALE 3/4" = 1'-0"



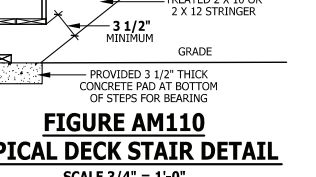
C FILLED PORCH SECTION WITH VENT
SCALE 1/2" = 1'-0"



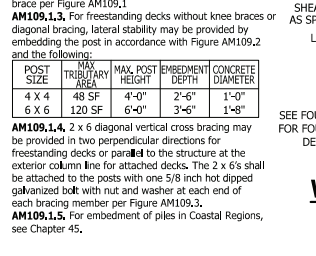
C DECK ATTACHMENT
SCALE 1/2" = 1'-0"



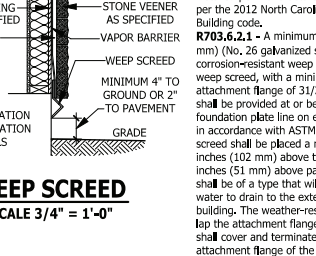
D DECK STAIR NOTES
SCALE 3/4" = 1'-0"



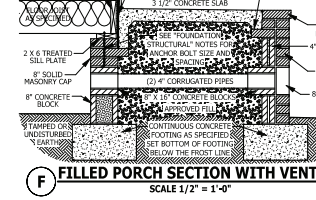
E TYPICAL DECK STAIR DETAIL
SCALE 3/4" = 1'-0"



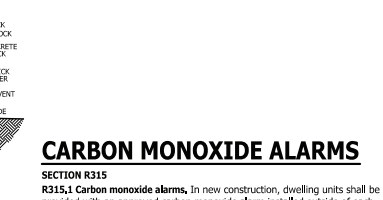
E WEEP SCREED
SCALE 3/4" = 1'-0"



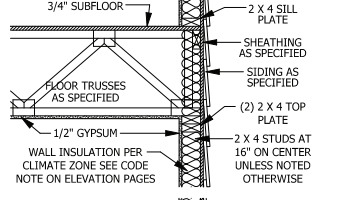
F TYPICAL WALL DETAIL
SCALE 3/4" = 1'-0"



F STAIRWAY NOTES
SCALE 1/2" = 1'-0"



F SMOKE ALARMS
SCALE 1/2" = 1'-0"



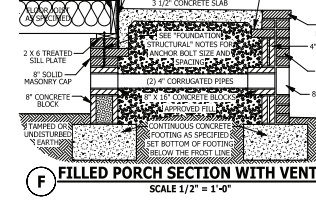
F CARBON MONOXIDE ALARMS
SCALE 3/4" = 1'-0"



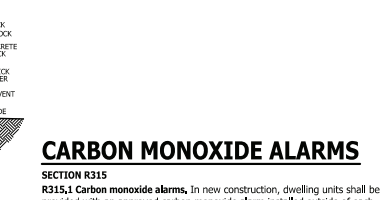
F GARAGE STEM WALL
SCALE 3/4" = 1'-0"



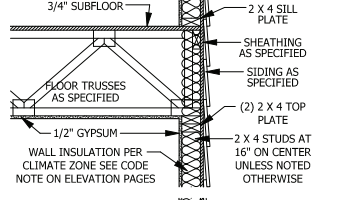
F DECK ATTACHMENT
SCALE 1/2" = 1'-0"



F CARBON MONOXIDE ALARMS
SCALE 3/4" = 1'-0"



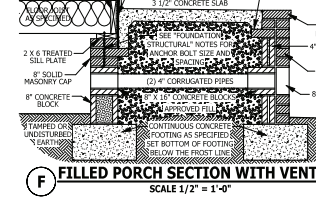
F CARBON MONOXIDE ALARMS
SCALE 3/4" = 1'-0"



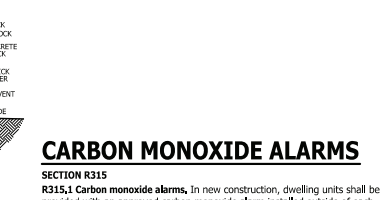
F CARBON MONOXIDE ALARMS
SCALE 3/4" = 1'-0"

F CARBON MONOXIDE ALARMS
SCALE 3/4" = 1'-0"

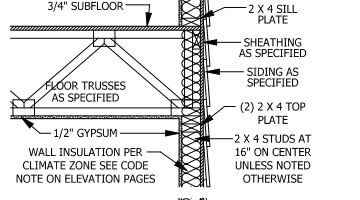
F CARBON MONOXIDE ALARMS
SCALE 3/4" = 1'-0"



F CARBON MONOXIDE ALARMS
SCALE 3/4" = 1'-0"



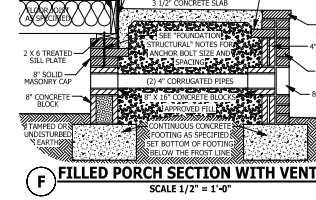
F CARBON MONOXIDE ALARMS
SCALE 3/4" = 1'-0"



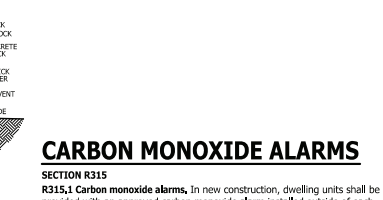
F CARBON MONOXIDE ALARMS
SCALE 3/4" = 1'-0"

F CARBON MONOXIDE ALARMS
SCALE 3/4" = 1'-0"

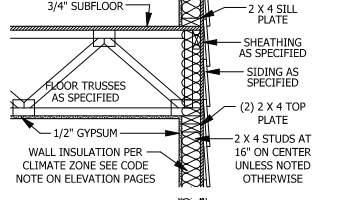
F CARBON MONOXIDE ALARMS
SCALE 3/4" = 1'-0"



F CARBON MONOXIDE ALARMS
SCALE 3/4" = 1'-0"



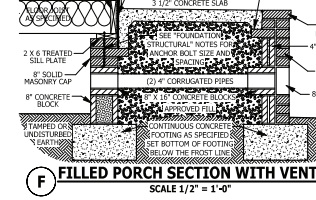
F CARBON MONOXIDE ALARMS
SCALE 3/4" = 1'-0"



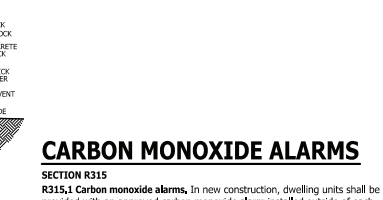
F CARBON MONOXIDE ALARMS
SCALE 3/4" = 1'-0"

F CARBON MONOXIDE ALARMS
SCALE 3/4" = 1'-0"

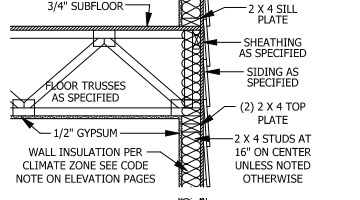
F CARBON MONOXIDE ALARMS
SCALE 3/4" = 1'-0"



F CARBON MONOXIDE ALARMS
SCALE 3/4" = 1'-0"



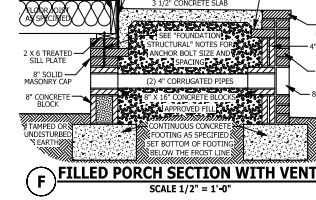
F CARBON MONOXIDE ALARMS
SCALE 3/4" = 1'-0"



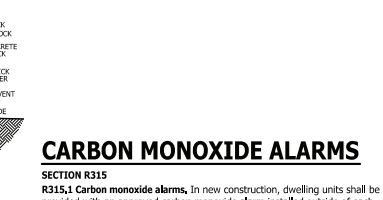
F CARBON MONOXIDE ALARMS
SCALE 3/4" = 1'-0"

F CARBON MONOXIDE ALARMS
SCALE 3/4" = 1'-0"

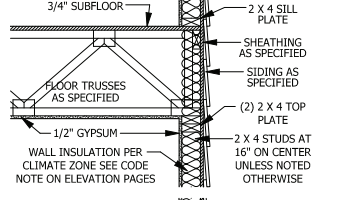
F CARBON MONOXIDE ALARMS
SCALE 3/4" = 1'-0"



F CARBON MONOXIDE ALARMS
SCALE 3/4" = 1'-0"



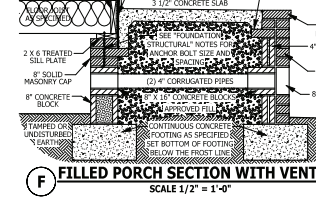
F CARBON MONOXIDE ALARMS
SCALE 3/4" = 1'-0"



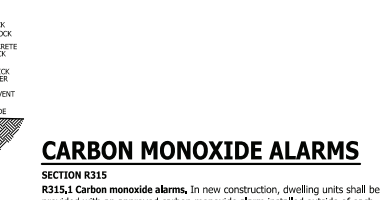
F CARBON MONOXIDE ALARMS
SCALE 3/4" = 1'-0"

F CARBON MONOXIDE ALARMS
SCALE 3/4" = 1'-0"

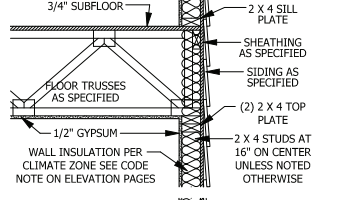
F CARBON MONOXIDE ALARMS
SCALE 3/4" = 1'-0"



F CARBON MONOXIDE ALARMS
SCALE 3/4" = 1'-0"



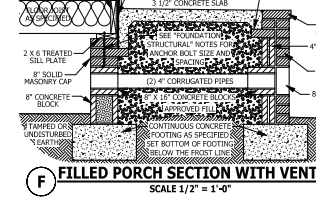
F CARBON MONOXIDE ALARMS
SCALE 3/4" = 1'-0"



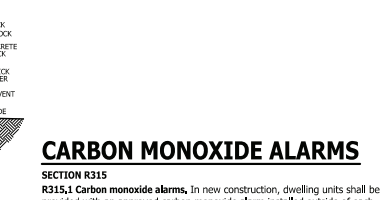
F CARBON MONOXIDE ALARMS
SCALE 3/4" = 1'-0"

F CARBON MONOXIDE ALARMS
SCALE 3/4" = 1'-0"

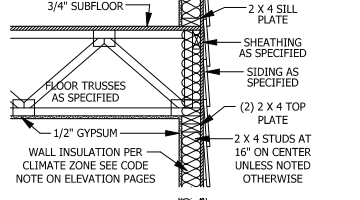
F CARBON MONOXIDE ALARMS
SCALE 3/4" = 1'-0"



F CARBON MONOXIDE ALARMS
SCALE 3/4" = 1'-0"



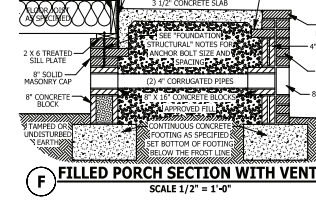
F CARBON MONOXIDE ALARMS
SCALE 3/4" = 1'-0"



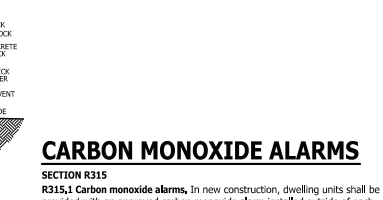
F CARBON MONOXIDE ALARMS
SCALE 3/4" = 1'-0"

F CARBON MONOXIDE ALARMS
SCALE 3/4" = 1'-0"

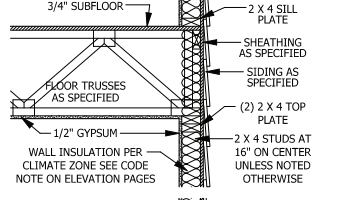
F CARBON MONOXIDE ALARMS
SCALE 3/4" = 1'-0"



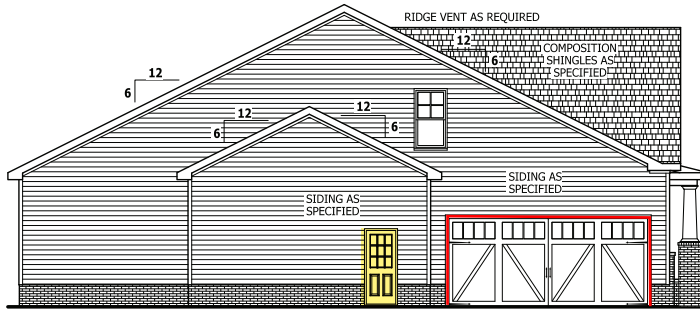
F CARBON MONOXIDE ALARMS
SCALE 3/4" = 1'-0"



F CARBON MONOXIDE ALARMS
SCALE 3/4" = 1'-0"

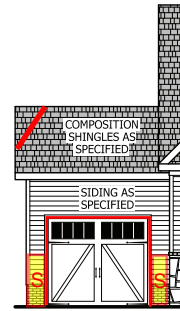


F CARBON MONOXIDE ALARMS
SCALE 3/4" = 1'-0"



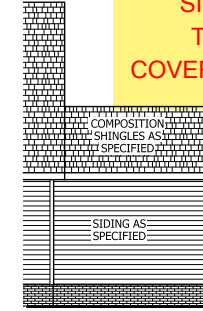
SIDE ELEVATION

SCALE 1/8" = 1'-0"



FRONT ELEVATION

SCALE 1/8" = 1'-0"



REAR ELEVATION

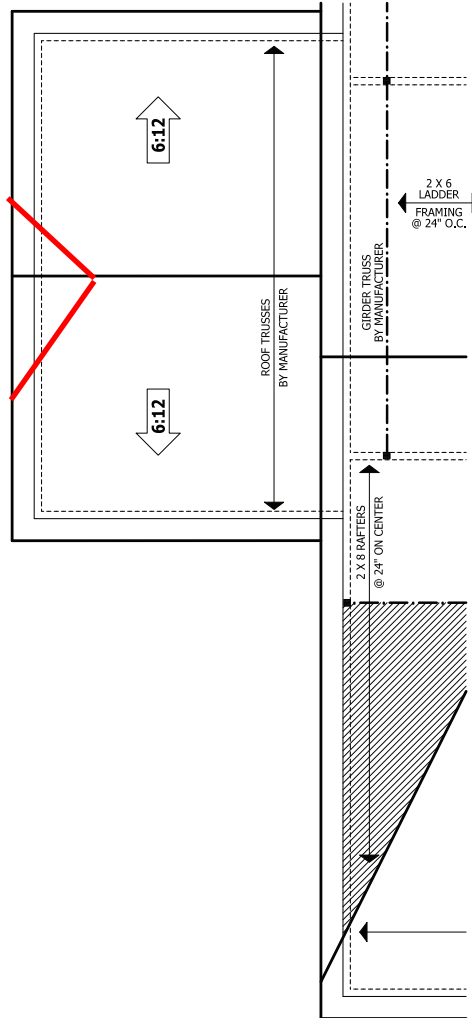
SCALE 1/8" = 1'-0"

**SIDELOAD GARAGE
TUDOR HIP ROOF
COVERED VAULTED PORCH
W/ PATIO**

PURCHASER MUST VERIFY ALL DIMENSIONS AND CONDITIONS BEFORE CONSTRUCTION BEGINS. HAYNES HOME PLANS, INC. ASSUMES NO LIABILITY FOR CONTRACTOR'S PRACTICES AND PROCEDURES. CODES AND CONDITIONS MAY VARY WITH LOCATION, A LOCAL DESIGNER, ARCHITECT OR ENGINEER SHOULD BE CONSULTED BEFORE CONSTRUCTION. THESE DRAWINGS ARE INSTRUMENTS OF SERVICE AND AS SUCH SHALL REMAIN PROPERTY OF THE DESIGNER.

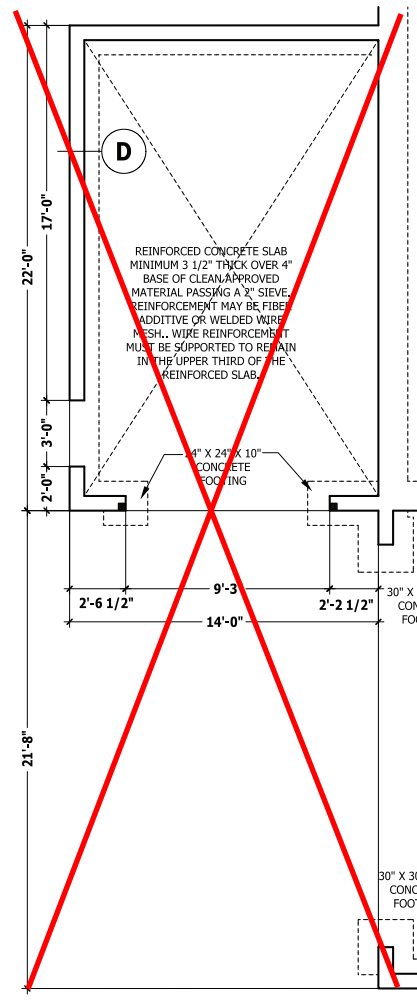
FRONT LOAD THIRD CAR

The Lauren H



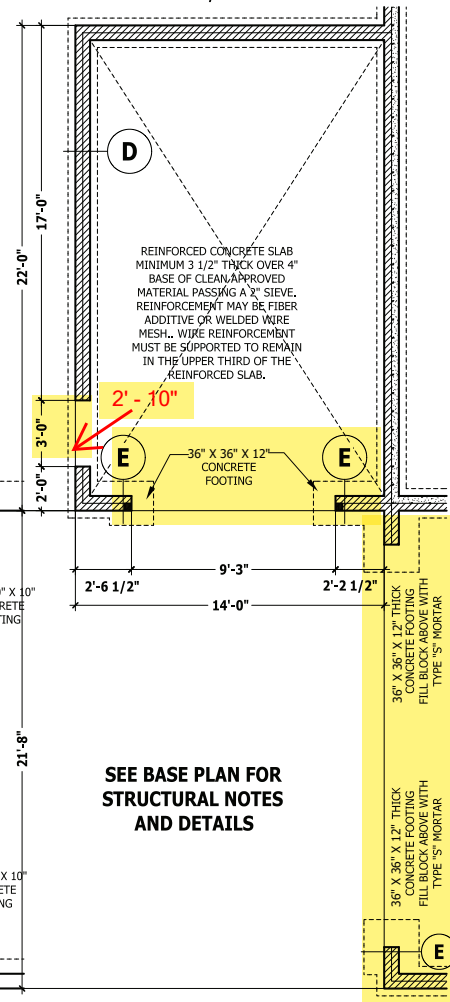
ROOF PLAN

SCALE 1/4" = 1'-0"



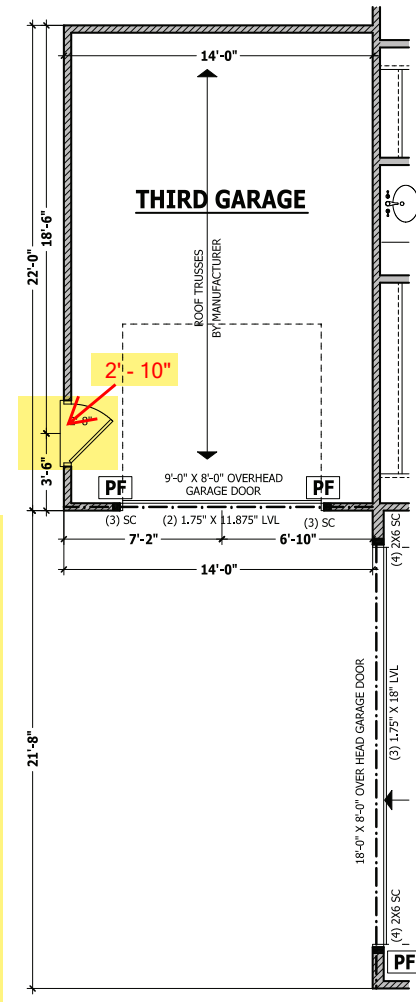
~~**MONOLITHIC SLAB PLAN**~~

SCALE 1/4" = 1'-0"



CRAWL SPACE / STEM WALL

SCALE 1/4" = 1'-0"



FIRST FLOOR PLAN

SCALE 1/4" = 1'-0"

HAYNES WEAVER
HOME PLANS, INC.

SQUARE FOOTAGE	
HEATED	1766 SQ.FT.
UNHEATED	400 SQ.FT.
TOTAL	2166 SQ.FT.
HEATED OPTIONAL	186 SQ.FT.
UNHEATED	488 SQ.FT.
TOTAL	674 SQ.FT.
UNHEATED OPTIONAL	186 SQ.FT.
TOTAL	860 SQ.FT.

© Copyright 2020
Haynes Home Plans, Inc.
2/24/2020
200219B
ADDENDUM

910.630.2100 • 919.606.4696

180 Wagon Wheel, Haynesville, NC 28645

**3 CAR GARAGE
COVERED PORCH W/ PATIO
TUDOR HIP ROOF**

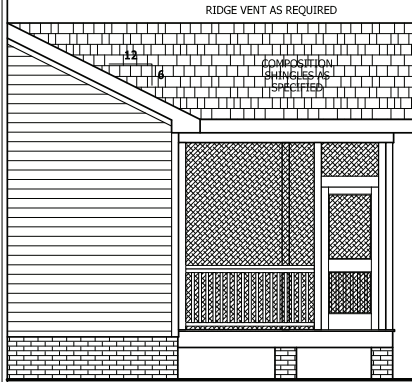
SIDELOAD

PURCHASER MUST VERIFY ALL DIMENSIONS AND CONDITIONS BEFORE CONSTRUCTION BEGINS.
HAYNES HOME PLANS, INC. ASSUMES NO LIABILITY FOR CONTRACTOR PRACTICES AND PROCEDURES.
CODES AND CONDITIONS MAY VARY WITH LOCATION, A LOCAL DESIGNER, ARCHITECT OR ENGINEER SHOULD BE CONSULTED BEFORE CONSTRUCTION.
THESE DRAWINGS ARE INSTRUMENTS OF SERVICE AND AS SUCH SHALL REMAIN PROPERTY OF THE DESIGNER.

SCREENED PORCH ADDENDUM

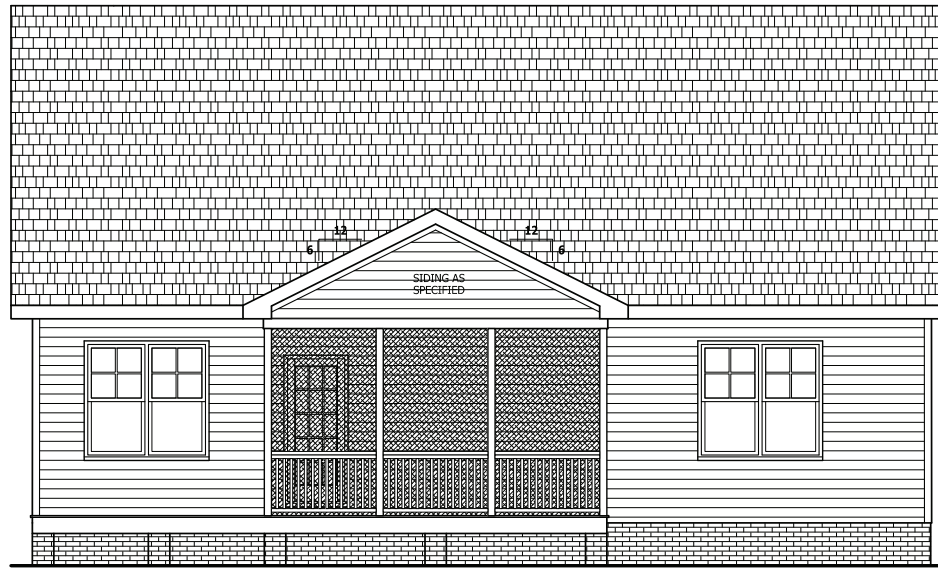
The Lauren H

HAYNES WEAVER HOMES
HOME PLANS, INC.
910.630.2100 • 919.606.4696
P.O. BOX 702, WAKE FOREST, NC 27888 919-435-6180 FAX 919-435-6180



RIGHT SIDE ELEVATION

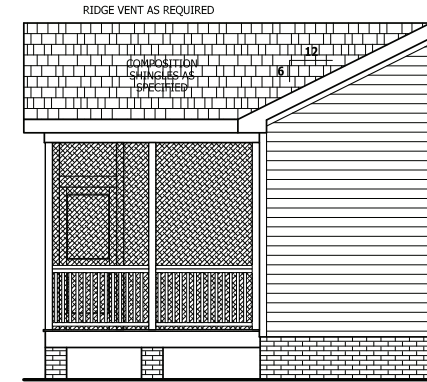
SCALE 1/4" = 1'-0"



REAR ELEVATION

SCALE 1/4" = 1'-0"

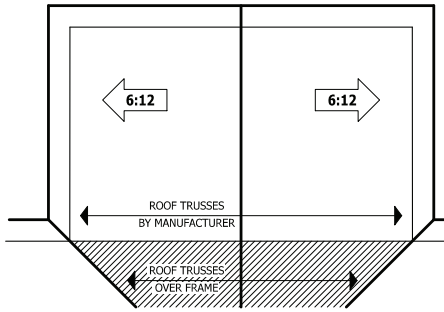
RAIL AS NEEDED PER CODE



LEFT SIDE ELEVATION

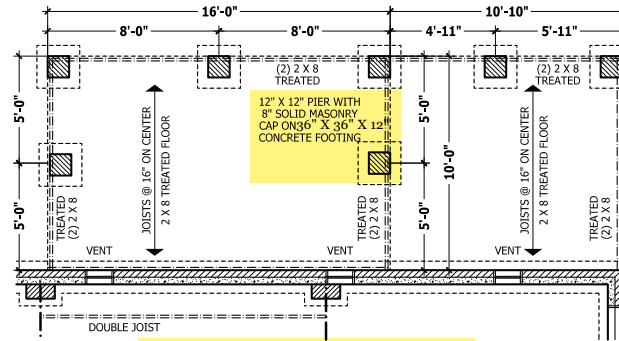
SCALE 1/4" = 1'-0"

SEE BASE PLAN FOR NOTES AND DETAILS



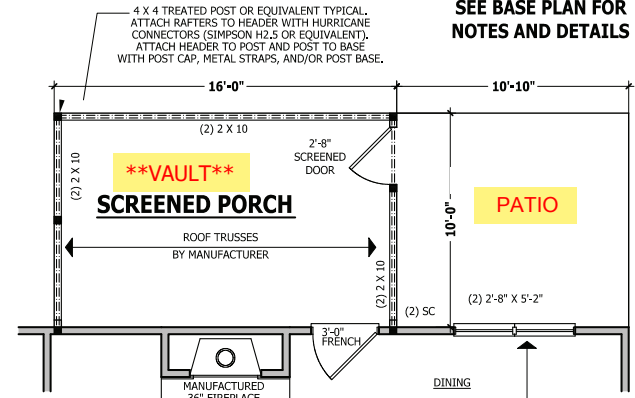
ROOF PLAN

SCALE 1/8" = 1'-0"



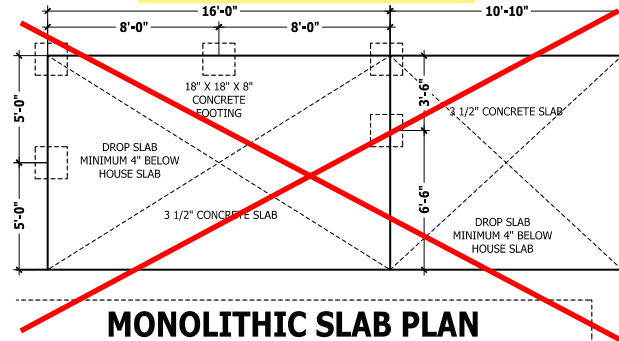
CRAWL SPACE PLAN

SCALE 1/4" = 1'-0"



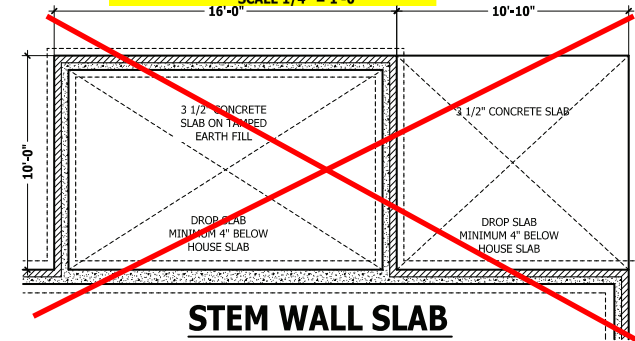
FIRST FLOOR PLAN

SCALE 1/4" = 1'-0"



MONOLITHIC SLAB PLAN

SCALE 1/4" = 1'-0"



STEM WALL SLAB

SCALE 1/4" = 1'-0"

SQUARE FOOTAGE	
HEATED	FIRST FLOOR 2766 SQ.FT.
	PORCH 400 SQ.FT.
	PATIO 2166 SQ.FT.
HEATED OPTIONAL	CAROLINA ROOM 148 SQ.FT.
	DISCREETION ROOM 304 SQ.FT.
	TOTAL 4512 SQ.FT.
UNHEATED	FRONT PORCH 188 SQ.FT.
	GARAGE 488 SQ.FT.
	TOTAL 676 SQ.FT.
UNHEATED OPTIONAL	SCREENED PORCH 160 SQ.FT.
	BACK PATIO 108 SQ.FT.
	THIRD GARAGE 252 SQ.FT.
	TOTAL 520 SQ.FT.

© Copyright 2020
Haynes Home Plans, Inc.
2/24/2020
200219B
ADDENDUM