

Trenco  
818 Soundside Rd  
Edenton, NC 27932

Re: 251464-A  
Lot 3A Elbridge Farm

The truss drawing(s) referenced below have been prepared by Truss Engineering Co. under my direct supervision based on the parameters provided by Comtech, Inc - Fayetteville.

Pages or sheets covered by this seal: I76617465 thru I76617468

My license renewal date for the state of North Carolina is December 31, 2025.

North Carolina COA: C-0844



September 25, 2025

Gilbert, Eric

**IMPORTANT NOTE:** The seal on these truss component designs is a certification that the engineer named is licensed in the jurisdiction(s) identified and that the designs comply with ANSI/TPI 1. These designs are based upon parameters shown (e.g., loads, supports, dimensions, shapes and design codes), which were given to MiTek or TRENCO. Any project specific information included is for MiTek's or TRENCO's customers file reference purpose only, and was not taken into account in the preparation of these designs. MiTek or TRENCO has not independently verified the applicability of the design parameters or the designs for any particular building. Before use, the building designer should verify applicability of design parameters and properly incorporate these designs into the overall building design per ANSI/TPI 1, Chapter 2.



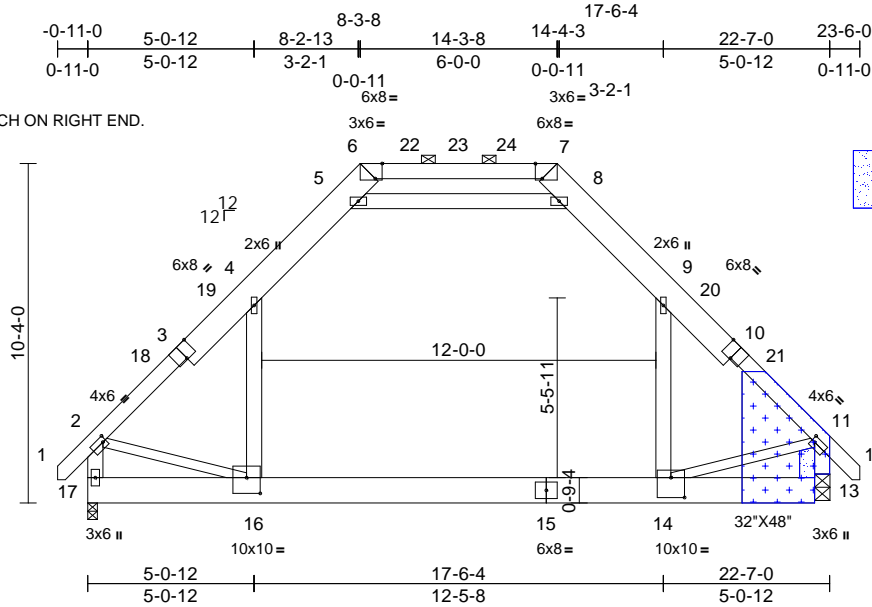
|          |       |                 |     |     |                          |           |
|----------|-------|-----------------|-----|-----|--------------------------|-----------|
| Job      | Truss | Truss Type      | Qty | Ply | Lot 3A Elbridge Farm     | 176617465 |
| 251464-A | B1GE  | PIGGYBACK ATTIC | 1   | 1   | Job Reference (optional) |           |

Comtech, Inc, Fayetteville, NC - 28314,

Run: 25.30 S Sep 7 2025 Print: 25.3.0 S Sep 7 2025 MiTek Industries, Inc. Thu Sep 25 08:24:00  
ID:Sdzs0uuhUIT3B?9OD0R?ZKyk2HC-RfC?PsB70Hq3NSgPqnL8w3ulTXbGKWrcDoi7J4zJC?f

Page: 1

REPAIR: ADD 5 1/2"X9 1/4" NOTCH ON RIGHT END.



Scale = 1:70.1

Plate Offsets (X, Y): [2:0-1-4,0-2-0], [3:0-4-0,Edge], [6:0-2-8,Edge], [7:0-2-8,Edge], [10:0-4-0,Edge], [11:0-1-4,0-2-0], [14:0-5-0,0-7-4], [16:0-5-0,0-5-12]

| Loading     | (psf) | Spacing         | 2-0-0           | CSI      |      | DEFL     | in    | (loc) | l/defl | L/d | PLATES         | GRIP     |
|-------------|-------|-----------------|-----------------|----------|------|----------|-------|-------|--------|-----|----------------|----------|
| TCLL (roof) | 20.0  | Plate Grip DOL  | 1.15            | TC       | 0.42 | Vert(LL) | -0.16 | 14-16 | >999   | 360 | MT20           | 244/190  |
| TCDL        | 10.0  | Lumber DOL      | 1.15            | BC       | 0.67 | Vert(CT) | -0.25 | 14-16 | >999   | 240 |                |          |
| BCLL        | 0.0*  | Rep Stress Incr | YES             | WB       | 0.23 | Horz(CT) | 0.01  | 13    | n/a    | n/a |                |          |
| BCDL        | 10.0  | Code            | IRC2021/TPI2014 | Matrix-S |      | Wind(LL) | 0.06  | 14-16 | >999   | 240 | Weight: 250 lb | FT = 20% |

#### LUMBER

TOP CHORD 2x6 SP No.1 \*Except\* 3-6,10-7:2x10 SP No.1  
BOT CHORD 2x10 SP No.1  
WEBS 2x6 SP No.1 \*Except\* 16-2,14-11:2x4 SP No.2



ATTACH 1/2" PLYWOOD OR OSB GUSSET (15/32" RATED SHEATHING 32/16 EXP 1) TO EACH FACE OF TRUSS WITH (0.131" X 2.5" MIN.) NAILS PER THE FOLLOWING NAIL SCHEDULE:  
2 X 3'S - 2 ROWS, 2 X 4'S - 3 ROWS, 2 X 6'S AND LARGER - 4 ROWS: SPACED @ 4" O.C.  
NAILS TO BE DRIVEN FROM BOTH FACES. STAGGER SPACING FROM FRONT TO BACK FACE FOR A NET 2" O.C. SPACING IN EACH COVERED TRUSS MEMBER. USE 2" MEMBER END DISTANCE.

#### BRACING

TOP CHORD Structural wood sheathing directly applied or 5-7-12 oc purlins, except end verticals, and 2-0-0 oc purlins (10-0-0 max.): 6-7.  
BOT CHORD Rigid ceiling directly applied or 10-0-0 oc bracing.

**REACTIONS** (size) 13=0-3-8, 17=0-3-8  
Max Horiz 17=344 (LC 10)  
Max Grav 13=1511 (LC 2), 17=1511 (LC 2)

**FORCES** (lb) - Maximum Compression/Maximum Tension

TOP CHORD 1-2=0/44, 2-4=-1653/0, 4-5=-1026/146, 5-6=0/634, 7-8=0/634, 8-9=-1026/146, 9-11=-1652/0, 11-12=0/44, 2-17=-1638/4, 11-13=-1638/4, 6-7=0/1011

BOT CHORD 16-17=-334/473, 14-16=0/1079, 13-14=-100/210

WEBS 4-16=0/826, 9-14=0/826, 5-8=-1935/93, 2-16=-33/976, 11-14=-39/981

#### NOTES

- Unbalanced roof live loads have been considered for this design.
- Wind: ASCE 7-16; Vult=130mph (3-second gust) Vasd=103mph; TCDL=6.0psf; BCDL=6.0psf; h=15ft; Cat. II; Exp C; Enclosed; MWFRS (envelope) exterior zone and C-C Exterior(2E) -0-9-2 to 2-2-14, Interior (1) 2-2-14 to 8-6-12, Exterior(2R) 8-6-12 to 12-9-11, Interior (1) 12-9-11 to 14-1-4, Exterior(2R) 14-1-4 to 18-4-3, Interior (1) 18-4-3 to 23-5-2 zone; end vertical left and right exposed;C-C for members and forces & MWFRS for reactions shown; Lumber DOL=1.60 plate grip DOL=1.60

- Truss designed for wind loads in the plane of the truss only. For studs exposed to wind (normal to the face), see Standard Industry Gable End Details as applicable, or consult qualified building designer as per ANSI/TPI 1.
- Truss to be fully sheathed from one face or securely braced against lateral movement (i.e. diagonal web).
- N/A
- This truss has been designed for a 10.0 psf bottom chord live load nonconcurrent with any other live loads.
- \* This truss has been designed for a live load of 30.0psf on the bottom chord in all areas where a rectangle 3-06-00 tall by 2-00-00 wide will fit between the bottom chord and any other members.

- Ceiling dead load (10.0 psf) on member(s). 4-5, 8-9, 5-8; Wall dead load (5.0psf) on member(s).4-16, 9-14
  - Bottom chord live load (40.0 psf) and additional bottom chord dead load (10.0 psf) applied only to room. 14-16
  - Graphical purlin representation does not depict the size or the orientation of the purlin along the top and/or bottom chord.
  - Attic room checked for L/360 deflection.
- LOAD CASE(S)** Standard



September 25,2025

**WARNING - Verify design parameters and READ NOTES ON THIS AND INCLUDED MITEK REFERENCE PAGE MII-7473 rev. 1/2/2023 BEFORE USE.**

Design valid for use only with MiTek® connectors. This design is based only upon parameters shown, and is for an individual building component, not a truss system. Before use, the building designer must verify the applicability of design parameters and properly incorporate this design into the overall building design. Bracing indicated is to prevent buckling of individual truss web and/or chord members only. Additional temporary and permanent bracing is always required for stability and to prevent collapse with possible personal injury and property damage. For general guidance regarding the fabrication, storage, delivery, erection and bracing of trusses and truss systems, see **ANSI/TPI1 Quality Criteria and DSB-22** available from Truss Plate Institute (www.tpinst.org) and **BCSI Building Component Safety Information** available from the Structural Building Component Association (www.sbcacomponents.com)

ENGINEERING BY  
**TRENCO**  
A MiTek Affiliate

818 Soundside Road  
Edenton, NC 27932



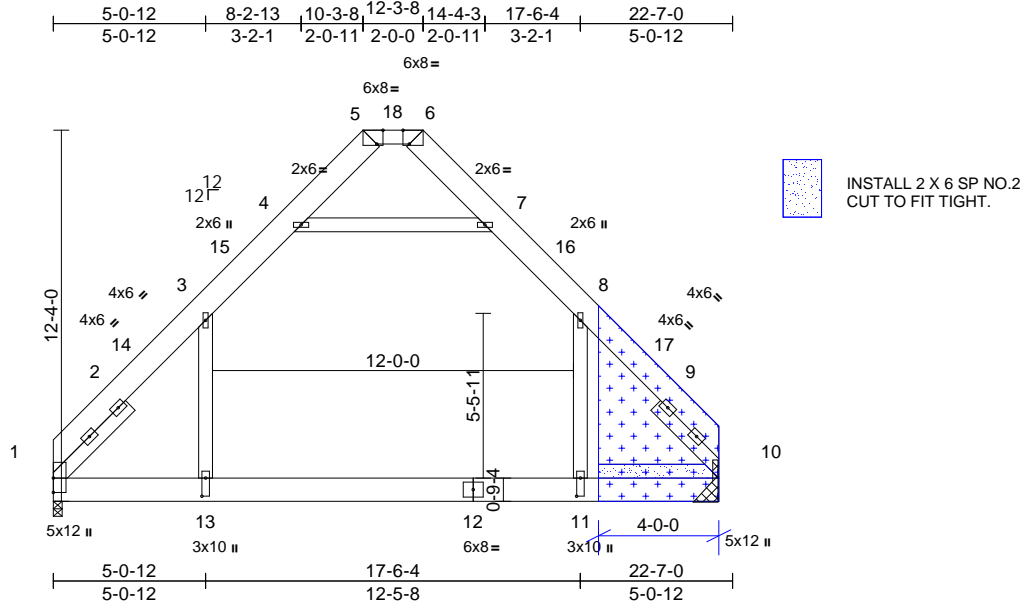
|                          |       |                 |     |     |                      |
|--------------------------|-------|-----------------|-----|-----|----------------------|
| Job                      | Truss | Truss Type      | Qty | Ply | Lot 3A Elbridge Farm |
| 251464-A                 | B2    | PIGGYBACK ATTIC | 1   | 1   | 176617466            |
| Job Reference (optional) |       |                 |     |     |                      |

Comtech, Inc, Fayetteville, NC - 28314,

Run: 25.30 S Sep 7 2025 Print: 25.3.0 S Sep 7 2025 MiTek Industries, Inc. Thu Sep 25 08:24:01  
ID:Sdzs0uuhUIT3B?9OD0R?ZKyk2HC-RfC?PsB70Hq3NSgPqnL8w3ulTXbGKWwCdoi7J4zJC?f

Page: 1

REPAIR: STUB RIGHT END 5 1/2"



Scale = 1:76.6

Plate Offsets (X, Y): [5:0-2-8,Edge], [6:0-2-8,Edge], [11:0-7-4,0-1-8], [13:0-7-4,0-1-8]

| Loading     | (psf) | Spacing         | 2-0-0           | CSI      |      | DEFL     | in    | (loc) | l/defl | L/d | PLATES         | GRIP     |
|-------------|-------|-----------------|-----------------|----------|------|----------|-------|-------|--------|-----|----------------|----------|
| TCLL (roof) | 20.0  | Plate Grip DOL  | 1.15            | TC       | 0.47 | Vert(LL) | -0.15 | 11-13 | >999   | 360 | MT20           | 244/190  |
| TCDL        | 10.0  | Lumber DOL      | 1.15            | BC       | 0.65 | Vert(CT) | -0.24 | 11-13 | >999   | 240 |                |          |
| BCLL        | 0.0*  | Rep Stress Incr | YES             | WB       | 0.15 | Horz(CT) | 0.01  | 10    | n/a    | n/a |                |          |
| BCDL        | 10.0  | Code            | IRC2021/TPI2014 | Matrix-S |      | Wind(LL) | 0.05  | 11-13 | >999   | 240 | Weight: 271 lb | FT = 20% |

#### LUMBER

|           |   |
|-----------|---|
| TOP CHORD | 2x10 SP No.1 *Except* 5-6:2x6 SP No.1                 |
| BOT CHORD | 2x10 SP No.1  |
| WEBS      | 2x6 SP No.1   |
| SLIDER    | Left 2x6 SP No.1 -- 3-6-3, Right 2x6 SP No.1 -- 3-6-3 |



ATTACH 1/2" PLYWOOD OR OSB GUSSET (15/32" RATED SHEATHING 32/16 EXP 1) TO EACH FACE OF TRUSS WITH (0.131" X 2.5" MIN.) NAILS PER THE FOLLOWING NAIL SCHEDULE:  
2 X 3'S - 2 ROWS, 2 X 4'S - 3 ROWS, 2 X 6'S AND LARGER - 4 ROWS: SPACED @ 4" O.C.  
NAILS TO BE DRIVEN FROM BOTH FACES. STAGGER SPACING FROM FRONT TO BACK FACE FOR A NET 2" O.C. SPACING IN EACH COVERED TRUSS MEMBER. USE 2" MEMBER END DISTANCE.

#### BRACING

|           |   |
|-----------|---|
| TOP CHORD | Structural wood sheathing directly applied or 6-0-0 oc purlins, except 2-0-0 oc purlins (10-0-0 max.): 5-6. |
| BOT CHORD | Rigid ceiling directly applied or 10-0-0 oc bracing.  |

#### REACTIONS

|           |                                 |
|-----------|---------------------------------|
| (size)    | 1=0-3-8, 10=0-3-8               |
| Max Horiz | 1=351 (LC 9)                    |
| Max Grav  | 1=1476 (LC 21), 10=1476 (LC 20) |

#### FORCES

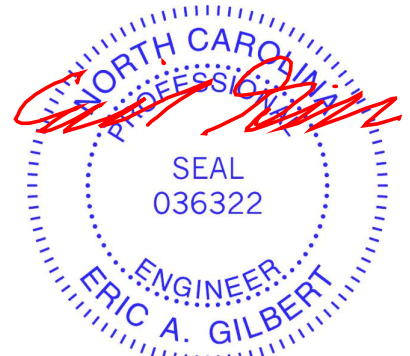
|  |  |
|--|--|
| (lb) - Maximum Compression/Maximum Tension |  |
| TOP CHORD                                  | 1-3=-2038/0, 3-4=-1093/155, 4-5=-112/201, 6-7=-112/202, 7-8=-1093/154, 8-10=-2036/0, 5-6=0/292 |
| BOT CHORD                                  | 1-13=0/1160, 11-13=0/1166, 10-11=0/1159  |
| WEBS                                       | 3-13=0/1113, 8-11=0/1113, 4-7=-1286/137  |

#### NOTES

- Unbalanced roof live loads have been considered for this design.
- Wind: ASCE 7-16; Vult=130mph (3-second gust) Vasd=103mph; TCDL=6.0psf; BCDL=6.0psf; h=15ft; Cat. II; Exp C; Enclosed; MWFRS (envelope) exterior zone and C-C Exterior(2E) 0-0-8 to 3-0-8, Interior (1) 3-0-8 to 10-6-12, Exterior(2E) 10-6-12 to 12-1-4, Exterior(2R) 12-1-4 to 16-4-3, Interior (1) 16-4-3 to 22-7-8 zone; C-C for members and forces & MWFRS for reactions shown; Lumber DOL=1.60 plate grip DOL=1.60
- Provide adequate drainage to prevent water ponding.
- This truss has been designed for a 10.0 psf bottom chord live load nonconcurrent with any other live loads.

- \* This truss has been designed for a live load of 30.0psf on the bottom chord in all areas where a rectangle 3-06-00 tall by 2-00-00 wide will fit between the bottom chord and any other members.
- Ceiling dead load (10.0 psf) on member(s). 3-4, 7-8, 4-7; Wall dead load (5.0psf) on member(s). 3-13, 8-11
- Bottom chord live load (40.0 psf) and additional bottom chord dead load (10.0 psf) applied only to room. 11-13
- Graphical purlin representation does not depict the size or the orientation of the purlin along the top and/or bottom chord.
- Attic room checked for L/360 deflection.

LOAD CASE(S) Standard



September 25, 2025

**WARNING - Verify design parameters and READ NOTES ON THIS AND INCLUDED MITEK REFERENCE PAGE MII-7473 rev. 1/2/2023 BEFORE USE.**

Design valid for use only with MiTek® connectors. This design is based only upon parameters shown, and is for an individual building component, not a truss system. Before use, the building designer must verify the applicability of design parameters and properly incorporate this design into the overall building design. Bracing indicated is to prevent buckling of individual truss web and/or chord members only. Additional temporary and permanent bracing is always required for stability and to prevent collapse with possible personal injury and property damage. For general guidance regarding the fabrication, storage, delivery, erection and bracing of trusses and truss systems, see **ANSI/TP1 Quality Criteria and DSB-22** available from Truss Plate Institute (www.tpinst.org) and **BCSI Building Component Safety Information** available from the Structural Building Component Association (www.sbcacomponents.com)

ENGINEERING BY  
**TRENCO**  
A MiTek Affiliate

818 Soundside Road  
Edenton, NC 27932



|                          |       |                 |     |     |                      |
|--------------------------|-------|-----------------|-----|-----|----------------------|
| Job                      | Truss | Truss Type      | Qty | Ply | Lot 3A Elbridge Farm |
| 251464-A                 | B3    | PIGGYBACK ATTIC | 7   | 1   | 176617467            |
| Job Reference (optional) |       |                 |     |     |                      |

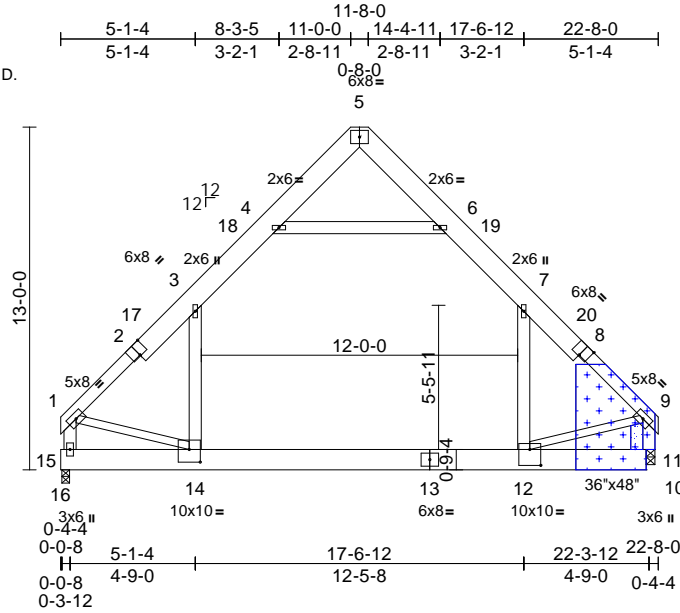
Comtech, Inc, Fayetteville, NC - 28314,

Run: 25.30 S Sep 7 2025 Print: 25.3.0 S Sep 7 2025 MiTek Industries, Inc. Thu Sep 25 08:24:01

Page: 1

ID:Sdzs0uuhUIT3B?9OD0R?ZKyk2HC-RfC?PsB70Hq3NSgPqnL8w3ulTXbGKWCD0i7J4zJC?f

REPAIR: ADD 5 1/2"x9 1/4" NOTCH ON RIGHT END.



INSTALL 2 X 6 SP NO.2  
CUT TO FIT TIGHT.

Scale = 1:87.4

Plate Offsets (X, Y): [2:0-4-0,Edge], [8:0-4-0,Edge], [12:0-5-0,0-7-4], [14:0-5-0,0-5-12]

| Loading     | (psf) | Spacing         | 2-0-0           | CSI      |      | DEFL     | in    | (loc) | l/defl | L/d | PLATES         | GRIP     |
|-------------|-------|-----------------|-----------------|----------|------|----------|-------|-------|--------|-----|----------------|----------|
| TCLL (roof) | 20.0  | Plate Grip DOL  | 1.15            | TC       | 0.40 | Vert(LL) | -0.16 | 12-14 | >999   | 360 | MT20           | 244/190  |
| TCDL        | 10.0  | Lumber DOL      | 1.15            | BC       | 0.66 | Vert(CT) | -0.25 | 12-14 | >999   | 240 |                |          |
| BCLL        | 0.0*  | Rep Stress Incr | YES             | WB       | 0.25 | Horz(CT) | 0.01  | 11    | n/a    | n/a |                |          |
| BCDL        | 10.0  | Code            | IRC2021/TPI2014 | Matrix-S |      | Wind(LL) | 0.06  | 12-14 | >999   | 240 | Weight: 263 lb | FT = 20% |

#### LUMBER

|           |  |
|-----------|--|
| TOP CHORD | 2x6 SP No.1 *Except* 2-5,8-5:2x10 SP No.1  |
| BOT CHORD | 2x10 SP No.1                               |
| WEBS      | 2x6 SP No.1 *Except* 14-1,12-9:2x4 SP No.2 |



ATTACH 1/2" PLYWOOD OR OSB GUSSET (15/32" RATED SHEATHING 32/16 EXP 1)  
TO EACH FACE OF TRUSS WITH (0.131" X 2.5" MIN.) NAILS PER THE FOLLOWING NAIL SCHEDULE:  
2 X 3'S - 2 ROWS, 2 X 4'S - 3 ROWS, 2 X 6'S AND LARGER - 4 ROWS: SPACED @ 4" O.C.  
NAILS TO BE DRIVEN FROM BOTH FACES. STAGGER SPACING FROM FRONT TO BACK FACE  
FOR A NET 2" O.C. SPACING IN EACH COVERED TRUSS MEMBER. USE 2" MEMBER END DISTANCE.

#### BRACING

|           |  |
|-----------|--|
| TOP CHORD | Structural wood sheathing directly applied or 5-5-11 oc purlins, except end verticals. |
| BOT CHORD | Rigid ceiling directly applied or 10-0-0 oc bracing.                                   |

- Ceiling dead load (10.0 psf) on member(s). 3-4, 6-7, 4-6;
- Wall dead load (5.0psf) on member(s).3-14, 7-12
- Bottom chord live load (40.0 psf) and additional bottom chord dead load (10.0 psf) applied only to room. 12-14
- Attic room checked for L/360 deflection.

LOAD CASE(S) Standard

#### REACTIONS

|           |                                  |
|-----------|----------------------------------|
| (size)    | 11=0-3-8, 15=0-3-8               |
| Max Horiz | 15=317 (LC 9)                    |
| Max Grav  | 11=1490 (LC 20), 15=1490 (LC 21) |

#### FORCES

(lb) - Maximum Compression/Maximum Tension

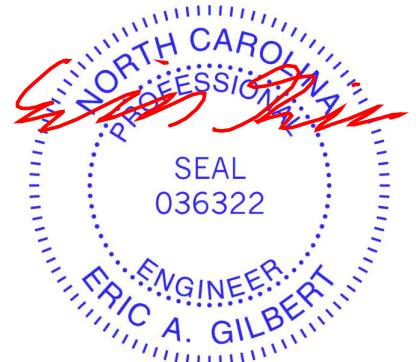
|           |  |
|-----------|--|
| TOP CHORD | 1-3=-1730/1, 3-4=-1091/157, 4-5=-92/231, 5-6=-92/231, 6-7=-1091/157, 7-9=-1729/1, 1-15=-1690/0, 9-11=-1691/0 |
|-----------|--|

|           |   |
|-----------|---|
| BOT CHORD | 15-16=0/0, 14-15=-357/435, 12-14=0/1124, 11-12=-77/156, 10-11=0/0 |
|-----------|---|

|      |   |
|------|---|
| WEBS | 3-14=0/794, 7-12=0/794, 4-6=-1259/135, 1-14=0/1112, 9-12=0/1116 |
|------|---|

#### NOTES

- Unbalanced roof live loads have been considered for this design.
- Wind: ASCE 7-16; Vult=130mph (3-second gust) Vasd=103mph; TCDL=6.0psf; BCDL=6.0psf; h=15ft; Cat. II; Exp C; Enclosed; MWFRS (envelope) exterior zone and C-C Exterior(2E) 0-4-4 to 3-4-4, Interior (1) 3-4-4 to 11-4-0, Exterior(2R) 11-4-0 to 15-6-15, Interior (1) 15-6-15 to 22-3-12 zone;C-C for members and forces & MWFRS for reactions shown; Lumber DOL=1.60 plate grip DOL=1.60
- This truss has been designed for a 10.0 psf bottom chord live load nonconcurrent with any other live loads.
- \* This truss has been designed for a live load of 30.0psf on the bottom chord in all areas where a rectangle 3-06-00 tall by 2-00-00 wide will fit between the bottom chord and any other members.



September 25,2025

**WARNING - Verify design parameters and READ NOTES ON THIS AND INCLUDED MITEK REFERENCE PAGE MII-7473 rev. 1/2/2023 BEFORE USE.**

Design valid for use only with MiTek® connectors. This design is based only upon parameters shown, and is for an individual building component, not a truss system. Before use, the building designer must verify the applicability of design parameters and properly incorporate this design into the overall building design. Bracing indicated is to prevent buckling of individual truss web and/or chord members only. Additional temporary and permanent bracing is always required for stability and to prevent collapse with possible personal injury and property damage. For general guidance regarding the fabrication, storage, delivery, erection and bracing of trusses and truss systems, see **ANSI/TPI1 Quality Criteria and DSB-22** available from Truss Plate Institute (www.tpinst.org) and **BCSI Building Component Safety Information** available from the Structural Building Component Association (www.sbcacompnents.com)

ENGINEERING BY  
**TRENCO**  
A MiTek Affiliate

818 Soundside Road  
Edenton, NC 27932



|          |       |                 |     |     |                          |
|----------|-------|-----------------|-----|-----|--------------------------|
| Job      | Truss | Truss Type      | Qty | Ply | Lot 3A Elbridge Farm     |
| 251464-A | B4    | PIGGYBACK ATTIC | 1   | 2   | Job Reference (optional) |
|          |       |                 |     |     | I76617468                |

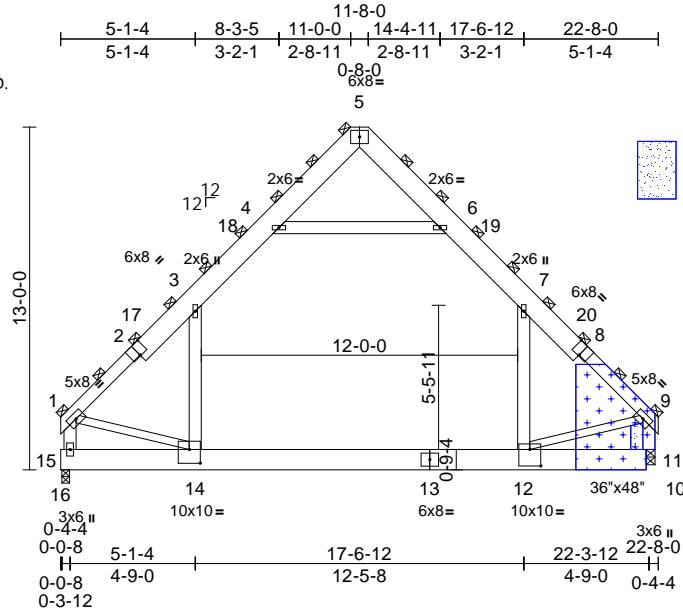
Comtech, Inc, Fayetteville, NC - 28314,

Run: 25.30 S Sep 7 2025 Print: 25.3.0 S Sep 7 2025 MiTek Industries, Inc. Thu Sep 25 08:24:01

Page: 1

ID:Sdzs0uuhUIT3B?9OD0R?ZKyk2HC-RfC?PsB70Hq3NSgPqnL8w3ulTXbGKWrCdoi7J4zJC?f

REPAIR: ADD 5 1/2"x9 1/4" NOTCH ON RIGHT END.



Scale = 1:87.4

Plate Offsets (X, Y): [2:0-4-0,Edge], [8:0-4-0,Edge], [12:0-5-0,0-7-8], [14:0-5-0,0-6-4]

| Loading     | (psf) | Spacing         | 4-0-0           | CSI      |      | DEFL     | in    | (loc) | l/defl | L/d | PLATES         | GRIP     |
|-------------|-------|-----------------|-----------------|----------|------|----------|-------|-------|--------|-----|----------------|----------|
| TCLL (roof) | 20.0  | Plate Grip DOL  | 1.15            | TC       | 0.55 | Vert(LL) | -0.16 | 12-14 | >999   | 360 | MT20           | 244/190  |
| TCDL        | 10.0  | Lumber DOL      | 1.15            | BC       | 0.74 | Vert(CT) | -0.26 | 12-14 | >999   | 240 |                |          |
| BCLL        | 0.0*  | Rep Stress Incr | NO              | WB       | 0.27 | Horz(CT) | 0.01  | 11    | n/a    | n/a |                |          |
| BCDL        | 10.0  | Code            | IRC2021/TPI2014 | Matrix-S |      | Wind(LL) | 0.06  | 12-14 | >999   | 240 | Weight: 526 lb | FT = 20% |

#### LUMBER

|           |  |
|-----------|--|
| TOP CHORD | 2x6 SP No.1 *Except* 2-5,8-5:2x10 SP No.1  |
| BOT CHORD | 2x10 SP No.1                               |
| WEBS      | 2x6 SP No.1 *Except* 14-1,12-9:2x4 SP No.2 |



ATTACH < 2 LAYERS > 3/4" PLYWOOD OR OSB GUSSET (23/32" RATED SHEATHING 48/24 EXP 1) TO EACH FACE OF TRUSS WITH (0.131" X 3.0") NAILS PER THE FOLLOWING NAIL SCHEDULE: 2 X 3'S - 2 ROWS, 2 X 4'S - 3 ROWS, 2 X 6'S AND LARGER - 4 ROWS: SPACED @ 3" O.C. USE 2" MEMBER END DISTANCE. GLUE PLYWOOD LAYERS TOGETHER PRIOR TO ATTACHING TO TRUSS.

#### BRACING

|           |  |
|-----------|--|
| TOP CHORD | 2-0-0 oc purlins (6-0-0 max.), except end verticals<br>(Switched from sheeted: Spacing > 2-0-0). |
| BOT CHORD | Rigid ceiling directly applied or 10-0-0 oc bracing.   |

|           |  |
|-----------|--|
| REACTIONS | (size) 11=0-3-8, 15=0-3-8<br>Max Horiz 15=635 (LC 11)<br>Max Grav 11=3984 (LC 20), 15=3984 (LC 21) |
|-----------|--|

FORCES (lb) - Maximum Compression/Maximum Tension

|           |  |
|-----------|--|
| TOP CHORD | 1-3=-3976/33, 3-4=-2409/328, 4-5=-119/577, 5-6=-119/577, 6-7=-2409/327, 7-9=-3976/32, 1-15=-3851/0, 9-11=-3853/0 |
| BOT CHORD | 15-16=0/0, 14-15=-713/928, 12-14=0/2571, 11-12=-163/461, 10-11=0/0   |
| WEBS      | 3-14=0/1940, 7-12=0/1940, 4-6=-2999/317, 1-14=0/2404, 9-12=0/2412  |

#### NOTES

- 2-ply truss to be connected together with 10d (0.131"x3") nails as follows:  
Top chords connected as follows: 2x6 - 2 rows staggered at 0-9-0 oc, 2x10 - 2 rows staggered at 0-9-0 oc.  
Bottom chords connected as follows: 2x10 - 2 rows staggered at 0-9-0 oc.  
Web connected as follows: 2x6 - 2 rows staggered at 0-9-0 oc, 2x4 - 1 row at 0-9-0 oc.
- All loads are considered equally applied to all plies, except if noted as front (F) or back (B) face in the LOAD CASE(S) section. Ply to ply connections have been provided to distribute only loads noted as (F) or (B), unless otherwise indicated.

- Unbalanced roof live loads have been considered for this design.
- Wind: ASCE 7-16; Vult=130mph (3-second gust)  
Vasd=103mph; TCDL=6.0psf; BCDL=6.0psf; h=15ft; Cat. II; Exp C; Enclosed; MWFRS (envelope) exterior zone and C-C Exterior(2E) 0-4-4 to 3-4-4, Interior (1) 3-4-4 to 11-4-0, Exterior(2R) 11-4-0 to 15-6-15, Interior (1) 15-6-15 to 22-3-12 zone; C-C for members and forces & MWFRS for reactions shown; Lumber DOL=1.60 plate grip DOL=1.60
- This truss has been designed for a 10.0 psf bottom chord live load nonconcurrent with any other live loads.
- \* This truss has been designed for a live load of 30.0psf on the bottom chord in all areas where a rectangle 3-06-00 tall by 2-00-00 wide will fit between the bottom chord and any other members.
- Ceiling dead load (10.0 psf) on member(s). 3-4, 6-7, 4-6; Wall dead load (5.0psf) on member(s). 3-14, 7-12
- Bottom chord live load (40.0 psf) and additional bottom chord dead load (10.0 psf) applied only to room. 12-14
- Graphical purlin representation does not depict the size or the orientation of the purlin along the top and/or bottom chord.
- Attic room checked for L/360 deflection.

#### LOAD CASE(S) Standard

- Dead + Roof Live (balanced): Lumber Increase=1.15, Plate Increase=1.15  
Uniform Loads (lb/ft)  
Vert: 15-16=-40, 14-15=-160 (F=-120), 12-14=-80, 11-12=-160 (F=-120), 10-11=-40, 1-3=-120, 3-4=-160, 4-5=-120, 5-6=-120, 6-7=-160, 7-9=-120, 4-6=-40  
Drag: 3-14=-20, 7-12=-20



September 25, 2025

**WARNING - Verify design parameters and READ NOTES ON THIS AND INCLUDED MITEK REFERENCE PAGE MII-7473 rev. 1/2/2023 BEFORE USE.**

Design valid for use only with MiTek® connectors. This design is based only upon parameters shown, and is for an individual building component, not a truss system. Before use, the building designer must verify the applicability of design parameters and properly incorporate this design into the overall building design. Bracing indicated is to prevent buckling of individual truss web and/or chord members only. Additional temporary and permanent bracing is always required for stability and to prevent collapse with possible personal injury and property damage. For general guidance regarding the fabrication, storage, delivery, erection and bracing of trusses and truss systems, see **ANSI/TPI1 Quality Criteria and DSB-22** available from Truss Plate Institute (www.tpinst.org) and **BCSI Building Component Safety Information** available from the Structural Building Component Association (www.sbcacompnents.com)

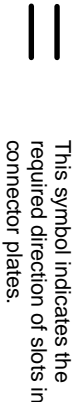
ENGINEERING BY  
**TRENCO**  
A MiTek Affiliate

818 Soundside Road  
Edenton, NC 27932



# Symbols

## PLATE LOCATION AND ORIENTATION



\* Plate location details available in MITek software or upon request.

## PLATE SIZE

**4 X 4**

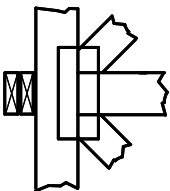
The first dimension is the plate width measured perpendicular to slots. Second dimension is the length parallel to slots.

## LATERAL BRACING LOCATION



Indicated by symbol shown and/or by text in the bracing section of the output. Use T or I bracing if indicated.

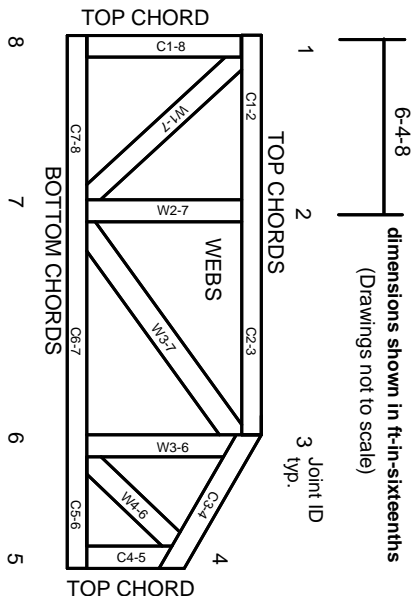
## BEARING



Indicates location where bearings (supports) occur. Icons vary but reaction section indicates joint number/letter where bearings occur. Min size shown is for crushing only.

**Industry Standards:**  
ANSI/TP1: National Design Specification for Metal Plate Connected Wood Truss Construction.  
DSB-22: Building Component Safety Information, Guide to Good Practice for Handling, Installing, Restraining & Bracing of Metal Plate Connected Wood Trusses.

# Numbering System



**JOINTS ARE GENERALLY NUMBERED/LETTERED CLOCKWISE AROUND THE TRUSS STARTING AT THE JOINT FARTHEST TO THE LEFT.**

**CHORDS AND WEBS ARE IDENTIFIED BY END JOINT NUMBERS/LETTERS.**

# Product Code Approvals

ICC-ES Reports:  
ESR-1988, ESR-2362, ESR-2685, ESR-3282  
ESR-4722, ESL-1388

# Design General Notes

Trusses are designed for wind loads in the plane of the truss unless otherwise shown.  
Lumber design values are in accordance with ANSI/TP1 section 6.3. These truss designs rely on lumber values established by others.

© 2023 MITek® All Rights Reserved

# General Safety Notes

**Failure to Follow Could Cause Property Damage or Personal Injury**

1. Additional stability bracing for truss system, e.g. diagonal or X-bracing, is always required. See BCSI.
2. Truss bracing must be designed by an engineer. For wide truss spacing, individual lateral braces themselves may require bracing, or alternative Tor I bracing should be considered.
3. Never exceed the design loading shown and never stack materials on inadequately braced trusses.
4. Provide copies of this truss design to the building designer, erection supervisor, property owner and all other interested parties.
5. Cut members to bear tightly against each other.
6. Place plates on each face of truss at each joint and embed fully. Knots and wane at joint locations are regulated by ANSI/TP1 1.
7. Design assumes trusses will be suitably protected from the environment in accord with ANSI/TP1 1.
8. Unless otherwise noted, moisture content of lumber shall not exceed 19% at time of fabrication.
9. Unless expressly noted, this design is not applicable for use with fire retardant, preservative treated, or green lumber.
10. Camber is a non-structural consideration and is the responsibility of truss fabricator. General practice is to camber for dead load deflection.
11. Plate type, size, orientation and location dimensions indicated are minimum plating requirements.
12. Lumber used shall be of the species and size, and in all respects, equal to or better than that specified.
13. Top chords must be sheathed or purlins provided at spacing indicated on design.
14. Bottom chords require lateral bracing at 10 ft. spacing, or less, if no ceiling is installed, unless otherwise noted.
15. Connections not shown are the responsibility of others.
16. Do not cut or alter truss member or plate without prior approval of an engineer.
17. Install and load vertically unless indicated otherwise.
18. Use of green or treated lumber may pose unacceptable environmental, health or performance risks. Consult with project engineer before use.
19. Review all portions of this design (front, back, words and pictures) before use. Reviewing pictures alone is not sufficient.
20. Design assumes manufacture in accordance with ANSI/TP1 1 Quality Criteria.
21. The design does not take into account any dynamic or other loads other than those expressly stated.

**MITek®**

ENGINEERING BY  
**TRENCO**  
A MITek Affiliate

MITek Engineering Reference Sheet: MII-7473 rev. 1/2/2023